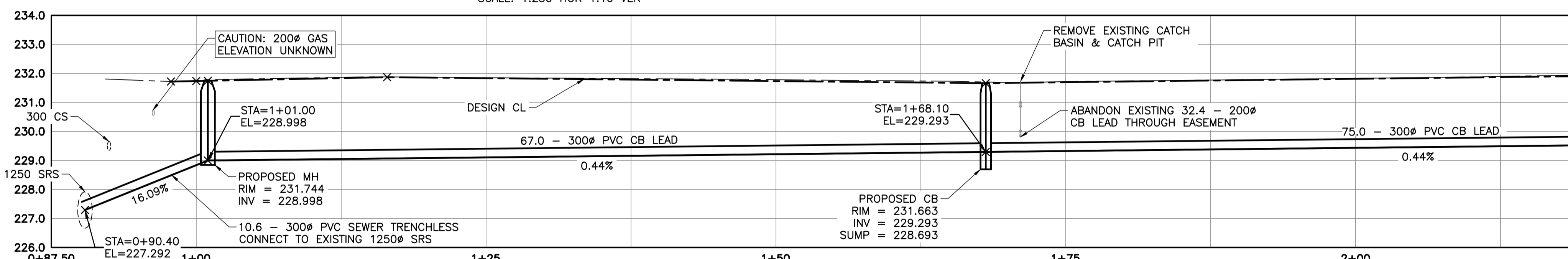
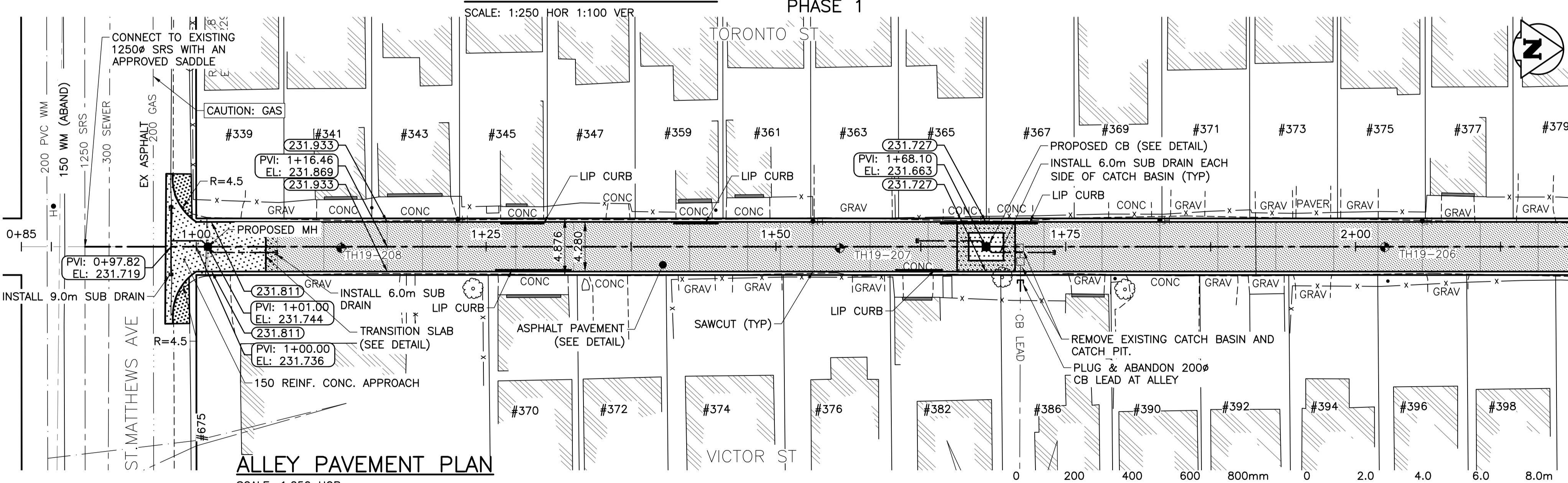


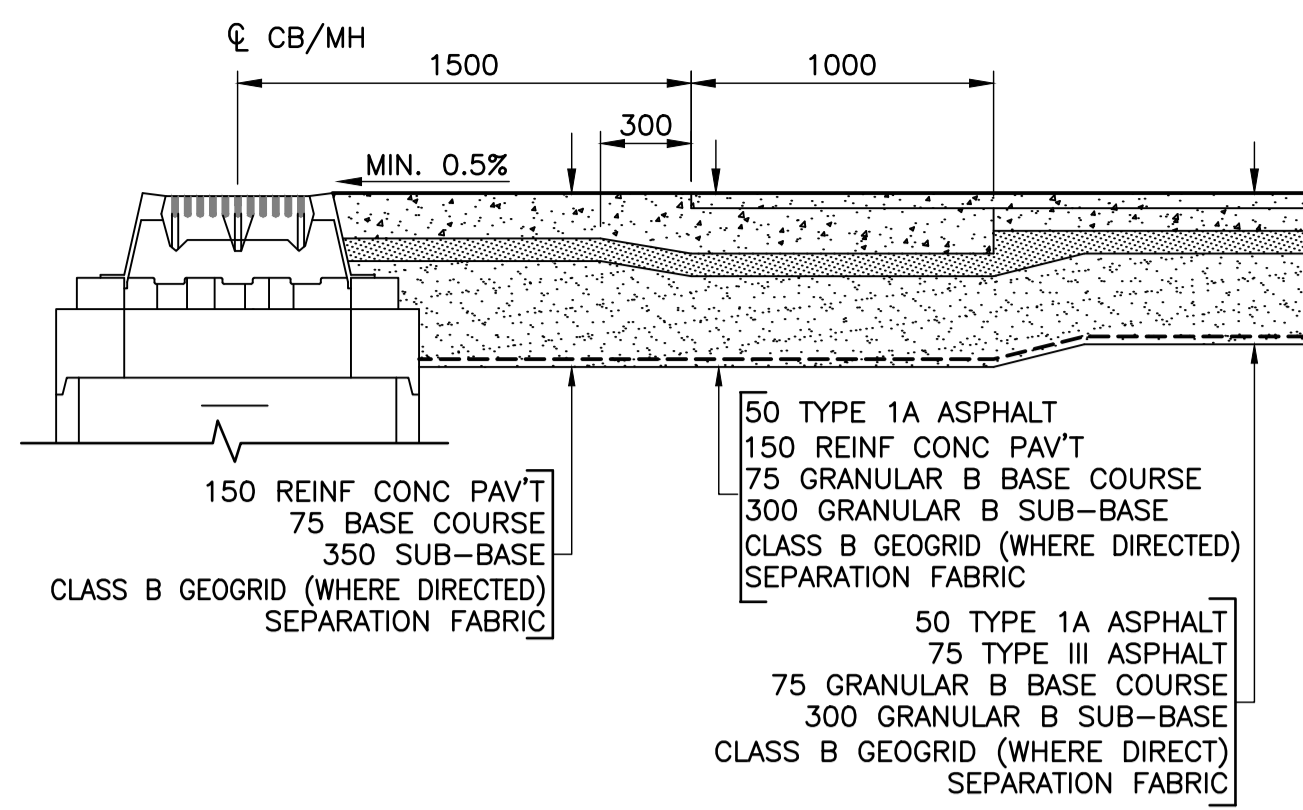
ALLEY PAVEMENT PROFILE
SCALE: 1:250 HOR 1:10 VER



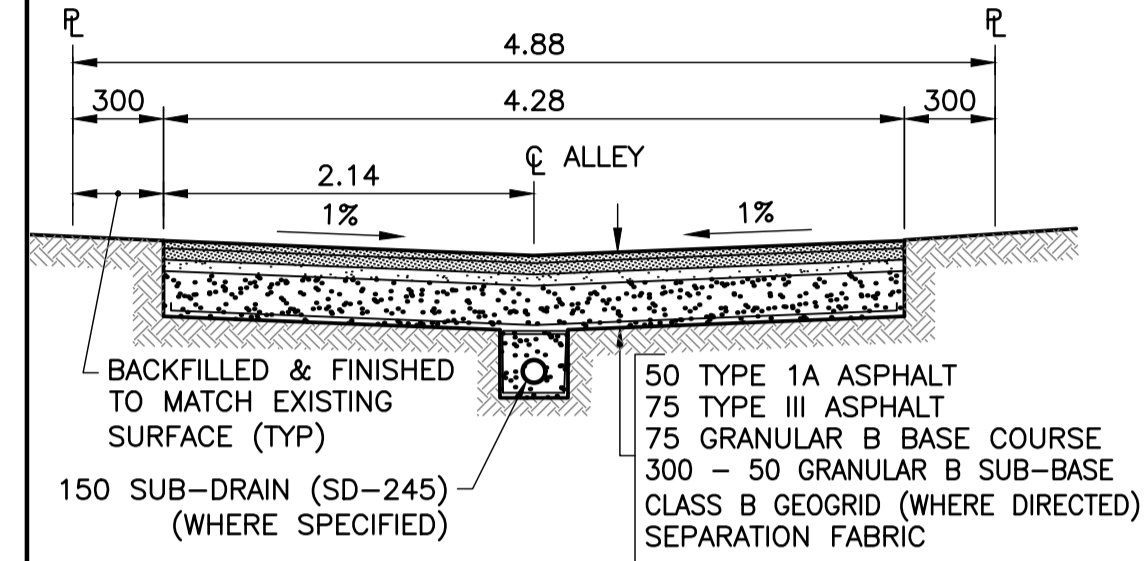
ALLEY SEWER PROFILE
SCALE: 1:250 HOR 1:100 VER



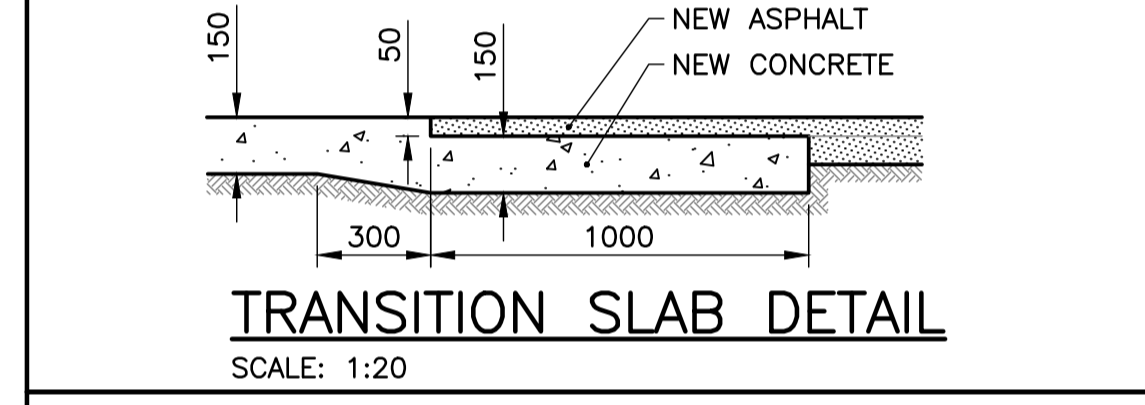
ALLEY PAVEMENT PLAN
SCALE: 1:250 HOR



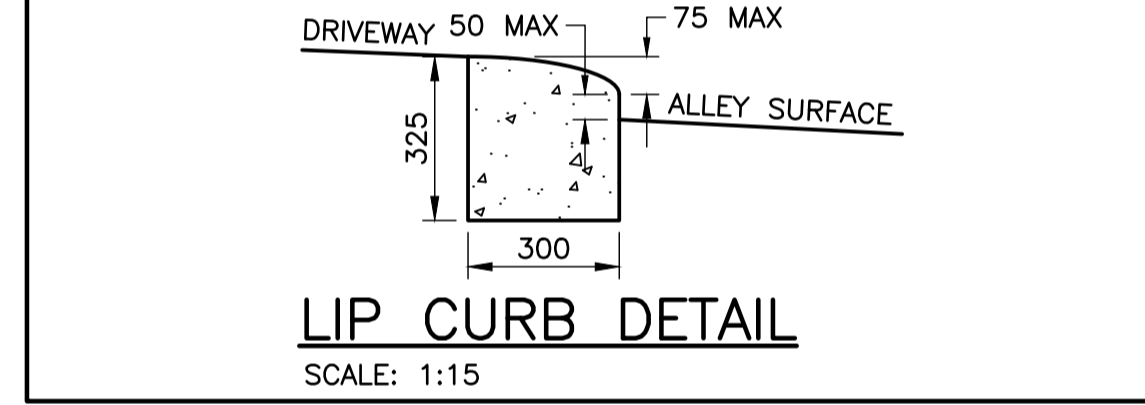
TYPICAL CONCRETE APRON TIE-IN DETAIL
SCALE: 1:25



ASPHALT CROSS SECTION
SCALE: 1:50



TRANSITION SLAB DETAIL
SCALE: 1:20



LIP CURB DETAIL
SCALE: 1:15

NOTES

- STATION CHAINAGE IS BASED ON CENTERLINE OF ALLEY RIGHT OF WAY.
- ALLEY TO BE CONSTRUCTED IN PHASES AS SHOWN.
- REGRADE EXISTING PRIVATE SIDEWALKS, APPROACHES & REAR OR SIDEYARDS AS DIRECTED.
- INSTALLATION OF LIP CURBS AND THEIR EXTENTS TO BE DETERMINED BY THE CONTRACT ADMINISTRATOR ON SITE.
- CONCRETE APPROACH RENEWALS TO BE REINFORCED IN ACCORDANCE WITH CW-3230, CW-3310, & SD-237.
- INSTALL MODIFIED BARRIER CURB AT ALL ALLEY APPROACH RADII (SD-203B).
- ALL EXISTING TREES TO BE PROTECTED THROUGHOUT CONSTRUCTION UNLESS OTHERWISE NOTED.
- CONTACT THE CITY OF WINNIPEG GEOMATICS BRANCH IN ADVANCE OF CONSTRUCTION TO COORDINATE MONUMENT PROTECTION SERVICES (204)-918-1360.
- CONFIRM THE LOCATION OF ALL UTILITIES PRIOR TO COMMENCING CONSTRUCTION.
- LIGHT STANDARDS AND HYDRO POLES MAY REQUIRE TEMPORARY SUPPORT DURING CONSTRUCTION AT THE CONTRACTOR'S EXPENSE.
- ISOLATE ALL POLES, BASES AND PILES WITHIN ALLEY RIGHT OF WAY (SD-228C).
- NO VIBRATORY COMPACTION PERMITTED WITHIN 1.0M OF GAS MAINS OR DUCT BANKS.
- NO WORKS, INCLUDING CONCRETE CUTTING OR BREAKING, TO BE UNDERTAKEN NEAR GAS LINES OR DUCT BANKS UNTIL DEPTH OF COVER IS DETERMINED AND A MANITOBA HYDRO SAFETY WATCH REPRESENTATIVE IS ON SITE.
- PROVIDE SEWER INSPECTION FOR ALL NEW SEWER PIPE INSTALLATION, POINT REPAIRS & ABANDONMENTS.

PROPERTY LIMITS DELINEATION
DELINEATION OF PROPERTY LIMITS AS SHOWN ON THIS DWG DOES NOT REPRESENT A "LEGAL SURVEY". KGS GROUP MAKES NO REPRESENTATION OR WARRANTY AS TO THE ACCURACY OF PROPERTY LIMITS DELINEATED ON THIS DWG, NOR ON THE DIMENSIONAL ACCURACY OF DWG FEATURES RELATIVE TO THOSE PROPERTY LIMITS.

METRIC
WHOLE NUMBERS INDICATE MILLIMETRES
DECIMALIZED NUMBERS INDICATE METRES

ENGINEERS GEOSCIENTISTS MANITOBA
Certificate of Authorization
KGS Group
No. 245

WARNING
1. NOTIFY THE GAS COMPANY OF THE PROPOSED LOCATION OF EXCAVATION.
2. TAKE PRECAUTION TO AVOID DAMAGE TO GAS COMPANY INSTALLATIONS.
3. SEE PROVINCIAL REGULATION 210/72 FOR DETAILS.

300_LDS	LAND DRAINAGE SEWER	300_LDS	-x-x-x-	FENCE	
250_WWS	WASTE WATER SEWER	250_WWS	→	TEST HOLE	
---	GAS	---	→	GUY WIRE	
---	HYDRO	---	→	LIGHT STANDARD	
---	M.T.S.	---	→	BACK OF CURB	
150_WM	WATER MAIN	150_WM	---	CONCRETE	
⊕	HYDRANT	⊕	---	ASPHALT	
⊕	VALVE	⊕	---	SIDEWALK	
⊕	MANHOLE	⊕	---	PROPERTY LINE	
⊕	CATCH BASIN	⊕	---	SURVEY BAR	
▽	CURB INLET	▽	---	GEODETIC BENCHMARK	
•	POLES	•	---	ELEVATION	
---	EXISTING	---	---	LEGEND-PLAN	
---	PROPOSED	---	---	LEGEND-PROFILE	

LOCATION APPROVED UNDERGROUND STRUCTURES

LOCATIONS OF UNDERGROUND STRUCTURES AS SHOWN ARE BASED ON THE BEST INFORMATION AVAILABLE BUT NO GUARANTEE IS GIVEN THAT ALL EXISTING UTILITIES ARE SHOWN OR THAT THE GIVEN LOCATIONS ARE EXACT. CONFIRMATION OF EXISTENCE AND EXACT LOCATION OF ALL SERVICES MUST BE OBTAINED FROM THE INDIVIDUAL UTILITIES BEFORE PROCEEDING WITH CONSTRUCTION.

B.M.	KGS_BASE	ELEV.	249.221
NO.	REVISIONS	DATE	BY
0	ISSUED FOR TENDER	20/03/18	JB

DESIGNED BY	JB	CHECKED BY	CR
DRAWN BY	JLF	APPROVED BY	CR
HOR. SCALE:	1:250	RELEASED FOR CONSTRUCTION:	
VERTICAL:	VARIES	DATE	2019-02-15

KGS GROUP

ENGINEER'S SEAL
Asaad Roscoe
Professional Engineer
No. 14869
2020-03-18

CONSULTANT DRAWING NO.
C201

THE CITY OF WINNIPEG
PUBLIC WORKS DEPARTMENT
ENGINEERING DIVISION

PROJECT TITLE
2019 ALLEY RENEWALS AND LOCAL IMPROVEMENT ALLEYS
TORONTO ST / VICTOR ST
ST MATTHEWS AVE TO ELLICE AVE
ST MATTHEWS TO STA 2+19

SHEET **04** OF **24**
COMPUTER FILE NAME
18-0107-017_CALL
CITY DRAWING NUMBER

Filepath: B:\Projects\2018\18-0107-017_CALL - TabC201 Plotted By: gloewen 20/03/18 [Wed 8:48am]
 At: C:\Users\jlf\OneDrive\Documents\18-0107-017_CALL - Scale: 1:1