

**PARTIAL ROOF FRAMING PLAN**  
 3/32" = 1'-0"  
 ROOF DESIGN LOADS:  
 SNOW LOAD: 36 PSF  
 PLATFORM LIVE LOAD = 50 PSF (SHOWN HATCHED)  
 DEAD LOAD: 15 PSF  
 NEW ROOF TOP UNITS AS NOTED ON PLAN  
 COORDINATE LOCATIONS OF ALL REQUIRED UNIT SUPPLIER PRIOR TO FABRICATION. PROVIDE ADDITIONAL W8x10 BEAMS AS REQUIRED.

CONFIRM LOCATIONS OF BEAMS WITH MECH UNIT SHOP DRAWINGS AND EXISTING SITE CONDITIONS PRIOR TO FABRICATION. COORDINATE LOCATIONS OF ALL REQUIRED. UNIT SUPPLIER PRIOR TO FABRICATION. PROVIDE ADDITIONAL W8x10 BEAMS AS REQUIRED.

**GENERAL NOTES**

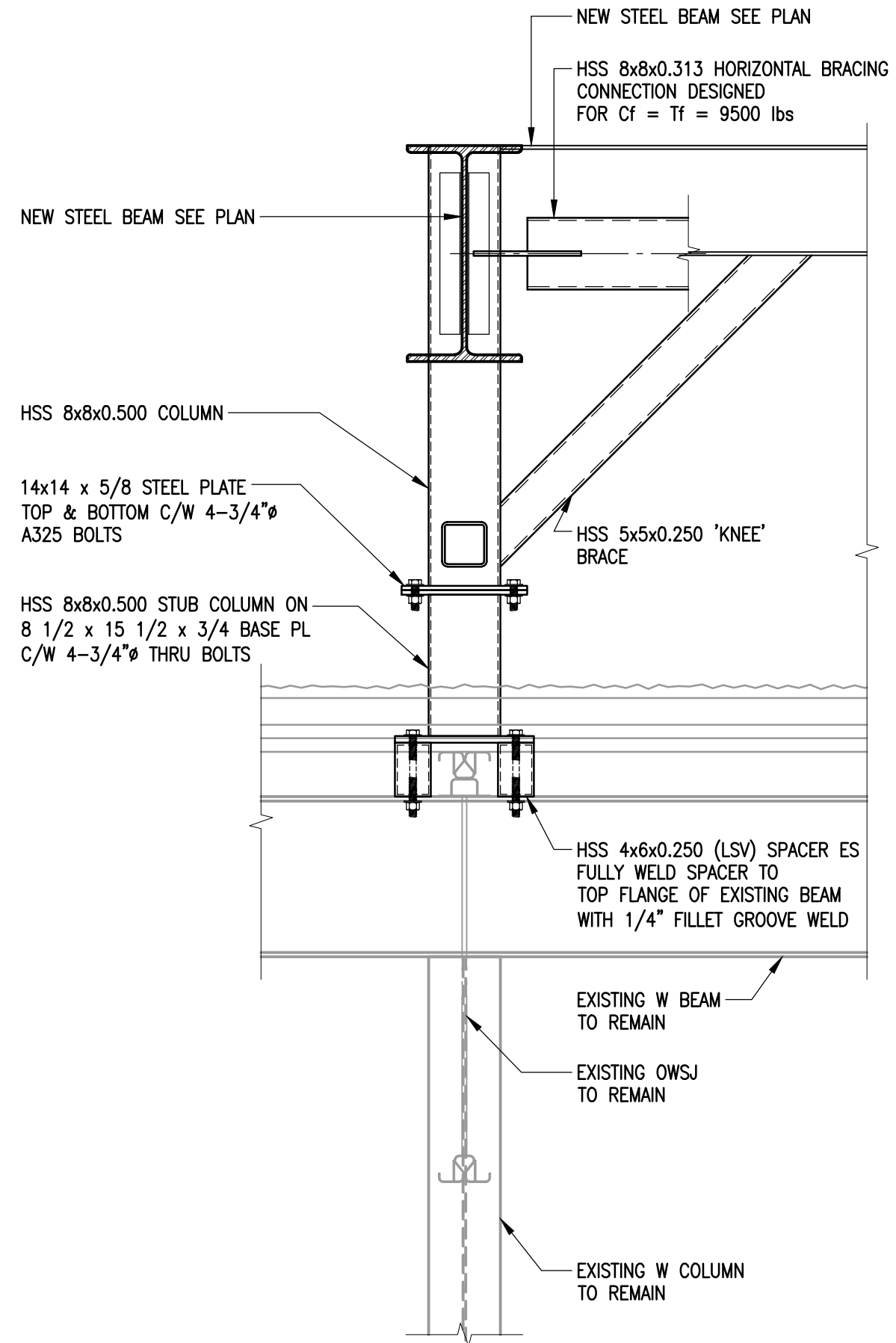
- STRUCTURAL DESIGN BASED ON THE NATIONAL BUILDING CODE OF CANADA 2010 EDITION AND THE 2011 MANITOBA AMENDMENTS.
  - IMPORTANCE CATEGORY: NORMAL
  - WIND LOAD:  $v_{50} = 9.4$  P.S.F.
  - GROUND SNOW LOAD:  $S_g = 39.6$  P.S.F.
  - ASSOCIATED RAIN LOAD: 4.2 P.S.F.
- SEISMIC SITE CLASSIFICATION: NOT APPLICABLE
- DO NOT SCALE DRAWINGS
- ALL DIMENSIONS ARE TO BE VERIFIED WITH THE PROJECT DRAWINGS AND EXISTING SITE CONDITIONS PRIOR TO CONSTRUCTION.
- THESE STRUCTURAL DRAWINGS SHOW THE COMPLETED STRUCTURE AND DO NOT INDICATE ALL COMPONENTS NECESSARY FOR SAFETY DURING CONSTRUCTION. THE CONTRACTOR SHALL BE SOLELY RESPONSIBLE FOR SAFETY ON AND AROUND THE JOBSITE DURING CONSTRUCTION.
- THE EXISTING STRUCTURE INCLUDING FOUNDATIONS AFFECTED BY THE WORK INDICATED IN THIS DRAWING HAS BEEN CHECKED AND DETERMINED ADEQUATE FOR THE PROPOSED LOADING.
- MECHANICAL UNITS AND STRUCTURAL STEEL SHALL BE CRANED FROM OSBORNE STREET SIDE OF EXISTING BUILDING. CONTRACTOR SHALL BE RESPONSIBLE FOR ALL COSTS AND COORDINATION WITH PUBLIC WORKS FOR PERMITS, BARRIERS, SIGNAGE, ETC. TO ACCOMPLISH CRANING PROCEDURES. ALTERNATIVELY, CONTRACTOR MAY CRANE FROM BUILDING PROPERTY, BUT IT MUST OCCUR ON THE WEEKEND AND NO ADDITIONAL PAYMENT WILL BE PROVIDED FOR PREMIUM CRANING WORK.

- MISCELLANEOUS METAL - STEEL STAR AND GUARDRAILS
- STEEL STAR AND GUARDRAIL SUPPLIER IS TO SUBMIT ENGINEERING DRAWINGS BEARING THE SEAL OF A PROFESSIONAL ENGINEER REGISTERED IN THE PROVINCE OF MANITOBA FOR REVIEW BY THE PROJECT ENGINEER. PRIOR TO FABRICATION, ENGINEERED SHOP DRAWINGS SHALL INCLUDE DESIGN LOADS, LAYOUT PLAN, CONNECTION DETAILS, AND ALL OTHER PERTINENT INFORMATION.
  - STEEL STAR AND GUARDRAIL SUPPLIER/DESIGNER SHALL PROVIDE A FINAL INSPECTION AND A LETTER SEALED BY THE ENGINEER RESPONSIBLE FOR THE STAR AND GUARDRAIL DESIGN, CERTIFYING THAT STARS AND GUARDRAILS ARE CONSTRUCTED AND INSTALLED AS PER DESIGN ASSUMPTIONS AND INSTALLATION REQUIREMENTS.

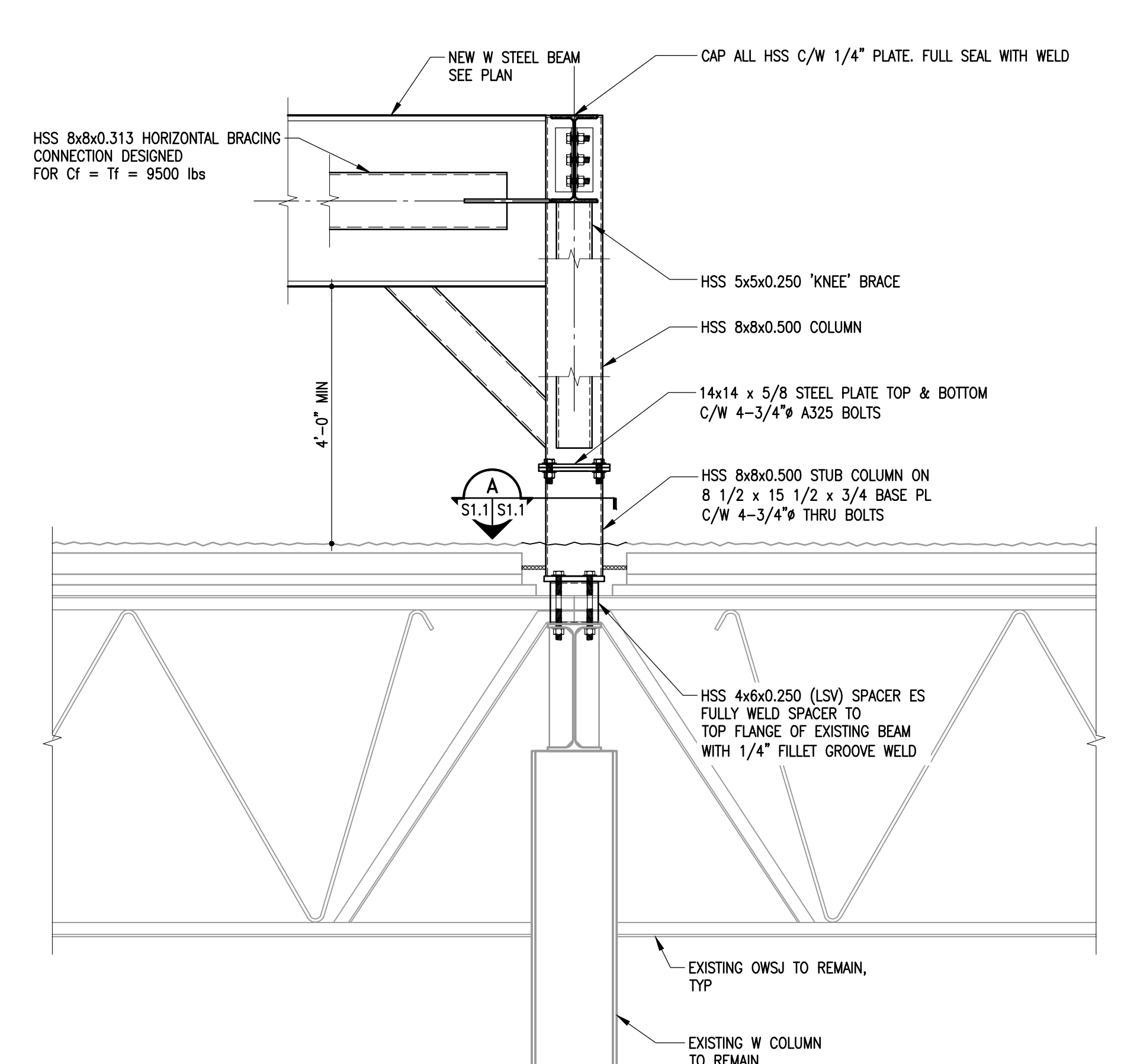
ALL HOLES IN EXIST ROOF TO BE FILLED IN WITH 1 1/2" DEEP 18GA METAL ROOF DECK C/W 3/4" PUDDLE WELD @ 12" O/C AROUND PERIMETER. EXTEND MIN 6" BEYOND EDGE OF OPENING IN ALL DIRECTIONS.

THE EXIST ROOF HAS BEEN DESIGNED FOR 36 psf LIVE LOAD. THE CONTRACTOR IS TO DETERMINE AN APPROPRIATE METHOD OF TRANSPORTING MATERIALS & MECHANICAL UNITS TO THE FINAL LOCATION WITHOUT EXCEEDING THIS DESIGN LOAD. ANY TRANSPORTATION METHOD SHOULD ENSURE PROTECTION OF THE EXIST ROOF SURFACE & UNDERLYING INSULATION. CONTRACTOR TO SUBMIT SEALED SHOP DRAWINGS TO ADDRESS MEANS AND METHODS OF INSTALLATION.

FILL EXIST OPENINGS IN MASONRY WALL WITH MATCHING WIDTH BLOCKS. MIN BLOCK STRENGTH 15 MPa. TYPE 3 MORTAR MUST BE USED. MASON TO REMOVE ANY PARTIAL BLOCKS FRAMING THE CURRENT OPENING PRIOR TO INFILLING.

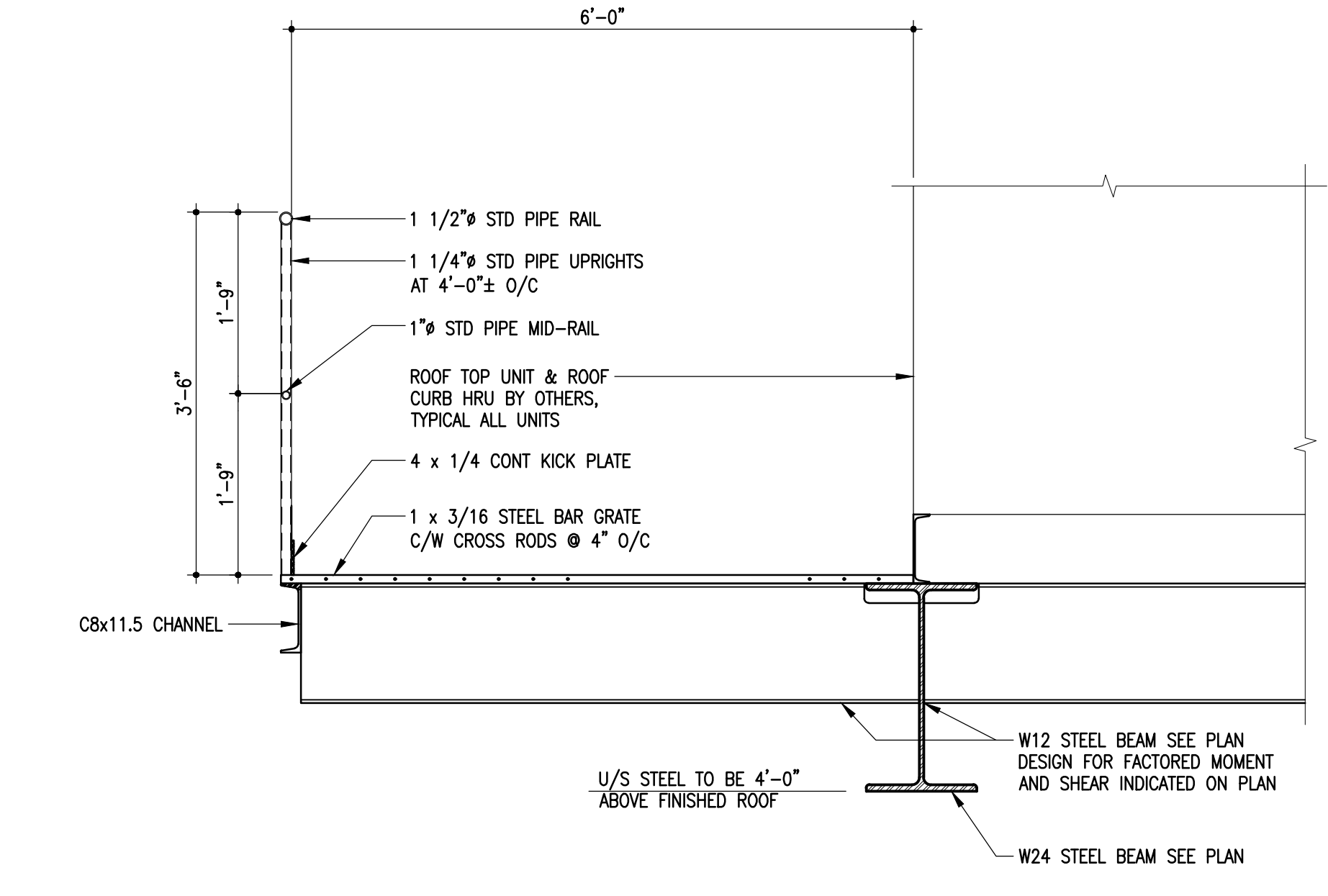


**1 SECTION**  
 S1.1|S1.1 3/4" = 1'-0"

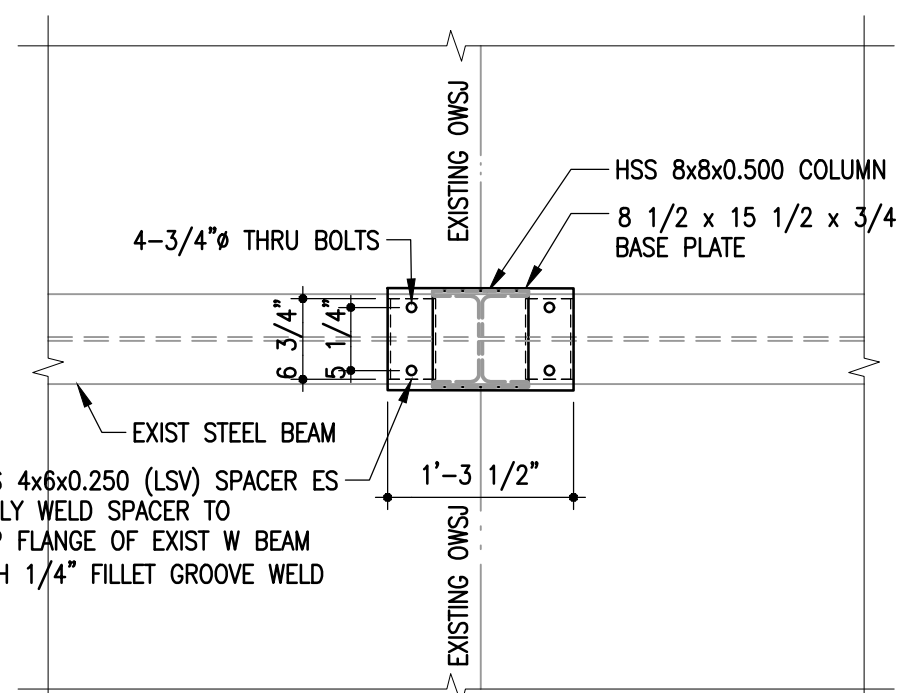


**2 SECTION**  
 S1.1|S1.1 3/4" = 1'-0"

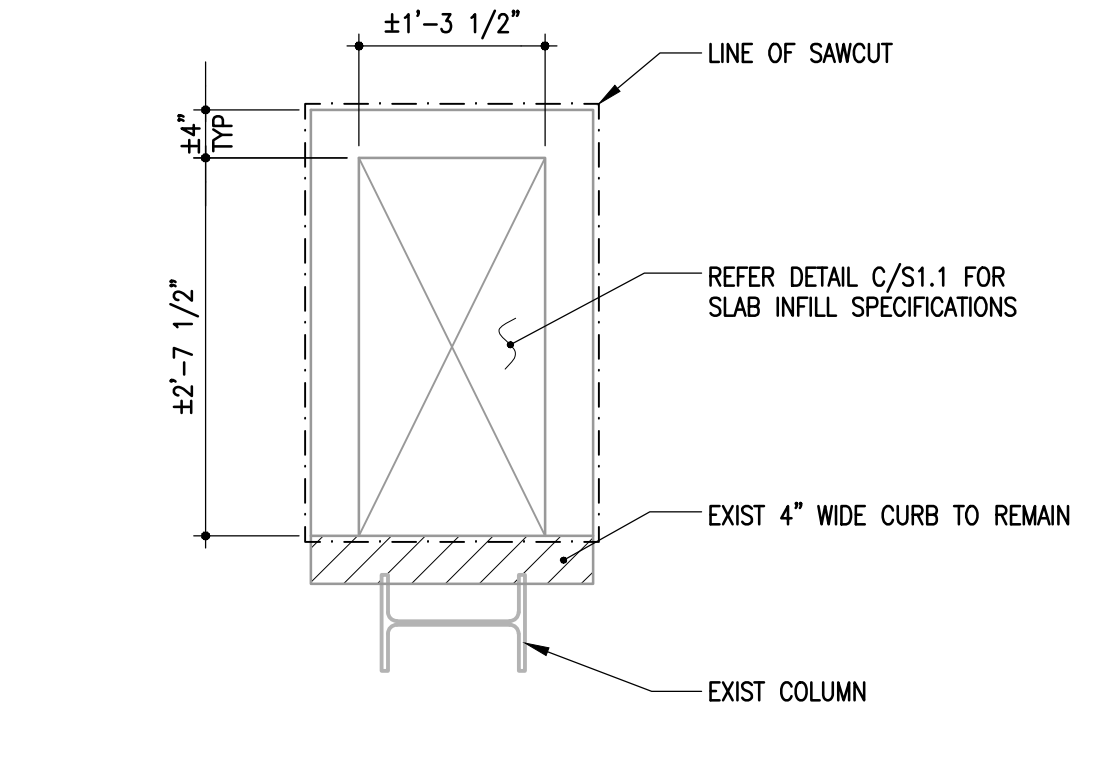
NOTE: CONTRACTOR IS TO CUT OUT EXISTING ROOFING, INSULATION & STEEL BECKING AT EACH NEW COLUMN LOCATION TO ALLOW FOR THE BASE PLATE TO BE INSTALLED DIRECTLY ON TOP OF THE NEW STEEL HSS SPACERS. ONCE THE COLUMNS ARE INSTALLED, THE CONTRACTOR IS RESPONSIBLE FOR RE-ROOFING AROUND EACH NEW COLUMN.



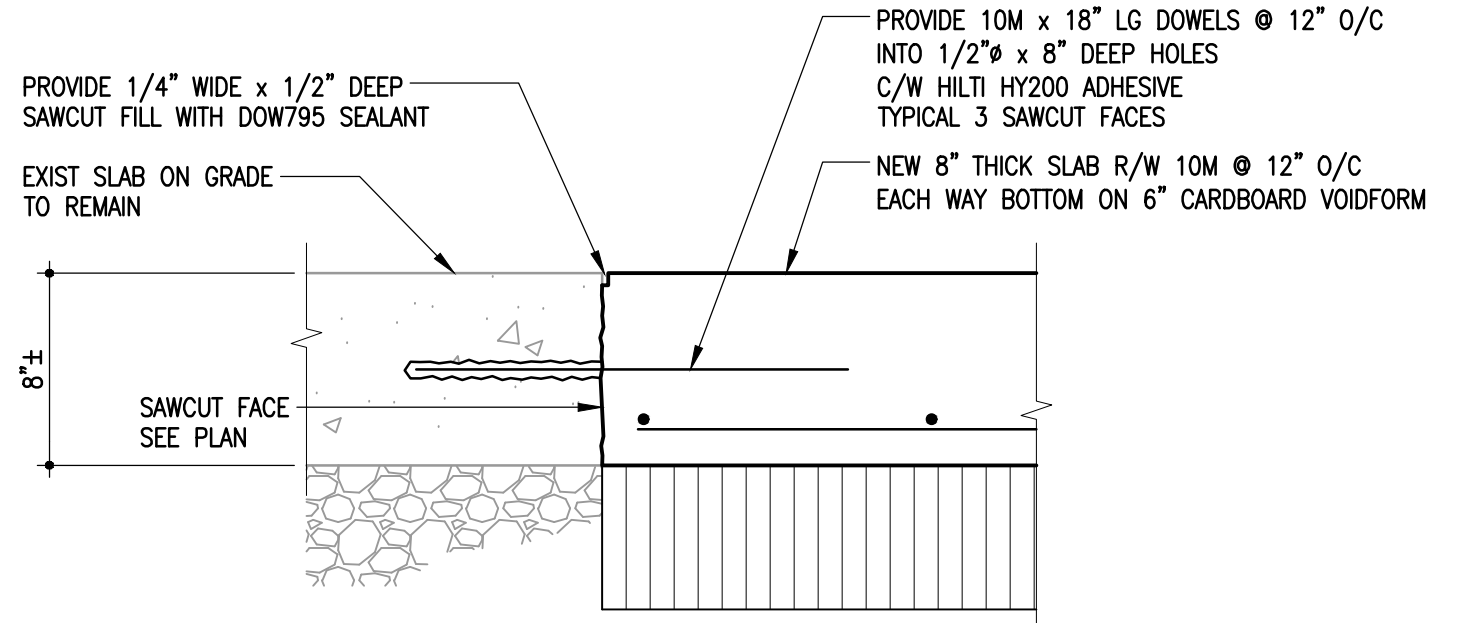
**3 SECTION**  
 S1.1|S1.1 3/4" = 1'-0"



**A DETAIL**  
 S1.1|S1.1 3/4" = 1'-0"



**B SAWCUT PLAN DETAIL ON GRADE**  
 S1.1|S1.1 3/4" = 1'-0"



**C SLAB INFILL DETAIL**  
 S1.1|S1.1 1 1/2" = 1'-0"

300-275 Carlton Street  
 Winnipeg, Manitoba R4C 5R6  
 T 204.943.7000  
 F 204.943.7007  
 2019-1272

**Crosier Kilgour & Partners Ltd.**  
 CONSULTING STRUCTURAL ENGINEERS

1	Re-issued for Construction	JAL	08/02/20
0	Issued for Construction	JAL	16/01/20
NO	Description	BY	DDMMYY

**ENGINEERS GEOSCIENTISTS MANITOBA**  
 Certificate of Authorization  
 Crosier Kilgour & Partners Ltd.  
 No. 235

770 Bradford Street  
 Winnipeg, Canada  
 T 204.775.0291  
 SMSeng.com

Project Title  
**CITY OF WINNIPEG FORT ROUGE TRANSIT BASE - STORAGE TRACK 25-36 - MECHANICAL UPGRADE**

Winnipeg MANITOBA

Drawing Title  
**PARTIAL ROOF FRAMING PLAN SECTIONS & DETAIL GENERAL NOTES**

Drawn By	SAS	Checked By	JAL	Approved By	JAL
Scale	AS NOTED	Date	FEBRUARY 2020	Project No.	19-322-01
Revision Number	1	Drawing Number	S1.1	Sheet Order	1 OF 1