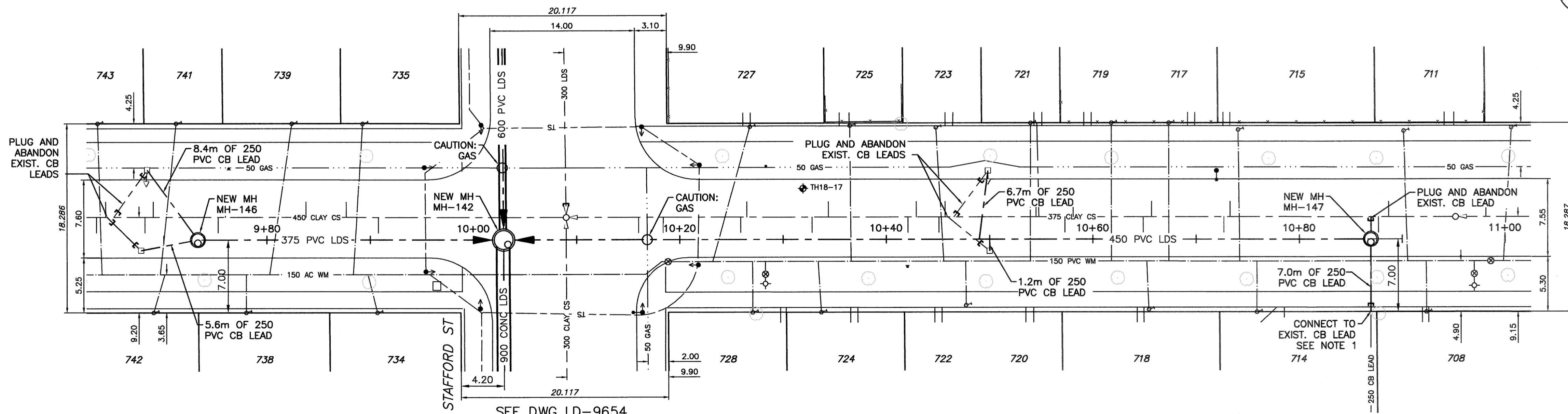
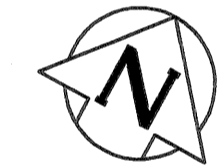


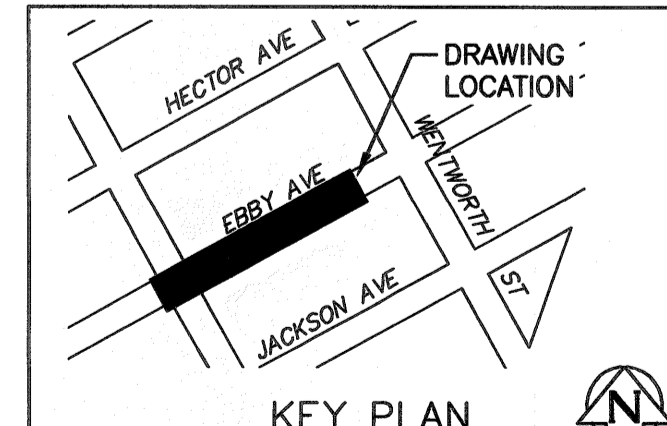
NOTE: CHAINAGES SHOWN ARE ALONG ϕ OF PROPOSED LDS

EBBY AVENUE

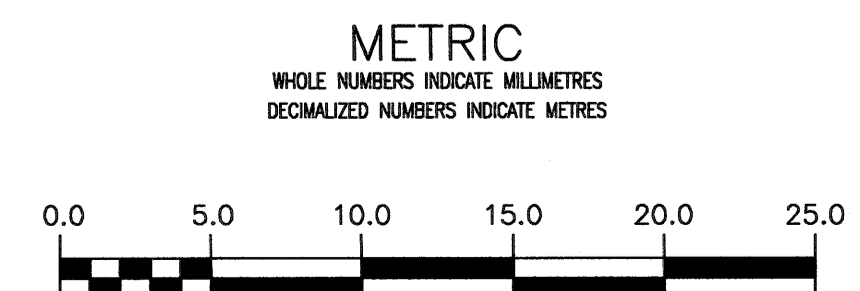


NOTES:
1. SOFT DIG TO CONFIRM THE DEPTH OF EXISTING CB LEAD COMING FROM THE BACKLANE SOUTH OF EBBY AVE. PRIOR TO TYING INTO NEW LDS.

SEE DWG LD-9654 FOR CONTINUATION



ENGINEERS GEOSCIENTISTS MANITOBA
Certificate of Authorization
CH2M HILL Canada Ltd.
No. 1441



PROPERTY LIMITS DELINEATION
DELINEATION OF PROPERTY LIMITS AS SHOWN ON THIS DRAWING DOES NOT REPRESENT A "LEGAL SURVEY". JACOBS AND KGS GROUP MAKE NO REPRESENTATION OR WARRANTY AS TO THE ACCURACY OF PROPERTY LIMITS DELINEATED ON THIS DRAWING, NOR ON THE DIMENSIONAL ACCURACY OF DRAWING FEATURES RELATIVE TO THOSE PROPERTY LIMITS.

WARNING
IF POWER EQUIPMENT OR EXPLOSIVES ARE TO BE USED FOR EXCAVATION ON THIS PROJECT THE CONTRACTOR MUST:
1) NOTIFY THE GAS COMPANY OF THE PROPOSED LOCATION OF EXCAVATION.
2) TAKE PRECAUTION TO AVOID DAMAGE TO GAS COMPANY INSTALLATIONS.
SEE PROVINCIAL REGULATION 210/72 FOR DETAILS

LOCATION APPROVED UNDERGROUND STRUCTURES
SUPV. U/G STRUCTURES DATE COMMITTEE
NOTE:
LOCATION OF UNDERGROUND STRUCTURES AS SHOWN ARE BASED ON THE BEST INFORMATION AVAILABLE BUT NO GUARANTEE IS GIVEN THAT ALL EXISTING UTILITIES ARE SHOWN OR THAT THE GIVEN LOCATIONS ARE EXACT. CONFIRMATION OF EXISTENCE AND EXACT LOCATION OF ALL SERVICES MUST BE OBTAINED FROM THE INDIVIDUAL UTILITIES BEFORE PROCEEDING WITH CONSTRUCTION.

NO.	REVISIONS	DATE	BY
0	ISSUED FOR TENDER	20/03/12	JBC

JACOBS KGS GROUP

DESIGNED BY: SDG	CHECKED BY: MD
DRAWN BY: JBC	APPROVED BY: S.D. GODON
HOR. SCALE: 1:250	RELEASED FOR CONSTRUCTION: [Signature]
VERTICAL: 1:50	DATE: 14/13/12

ENGINEER'S SEAL
PROVINCE OF MANITOBA
S. D. GODON
Member
25524
REGISTERED PROFESSIONAL ENGINEER

THE CITY OF WINNIPEG WATER AND WASTE DEPARTMENT

PROJECT TITLE: COCKBURN AND CALROSSIE COMBINED SEWER RELIEF WORKS - CONTRACT 10A
EBBY AVENUE
35 W STAFFORD STREET TO 75 E STAFFORD STREET

SHEET 9 OF 11
COMPUTER FILE NAME: C-2031.dwg
CITY DRAWING NUMBER: LD-9656

CONSULTANT DRAWING NO. C-2031