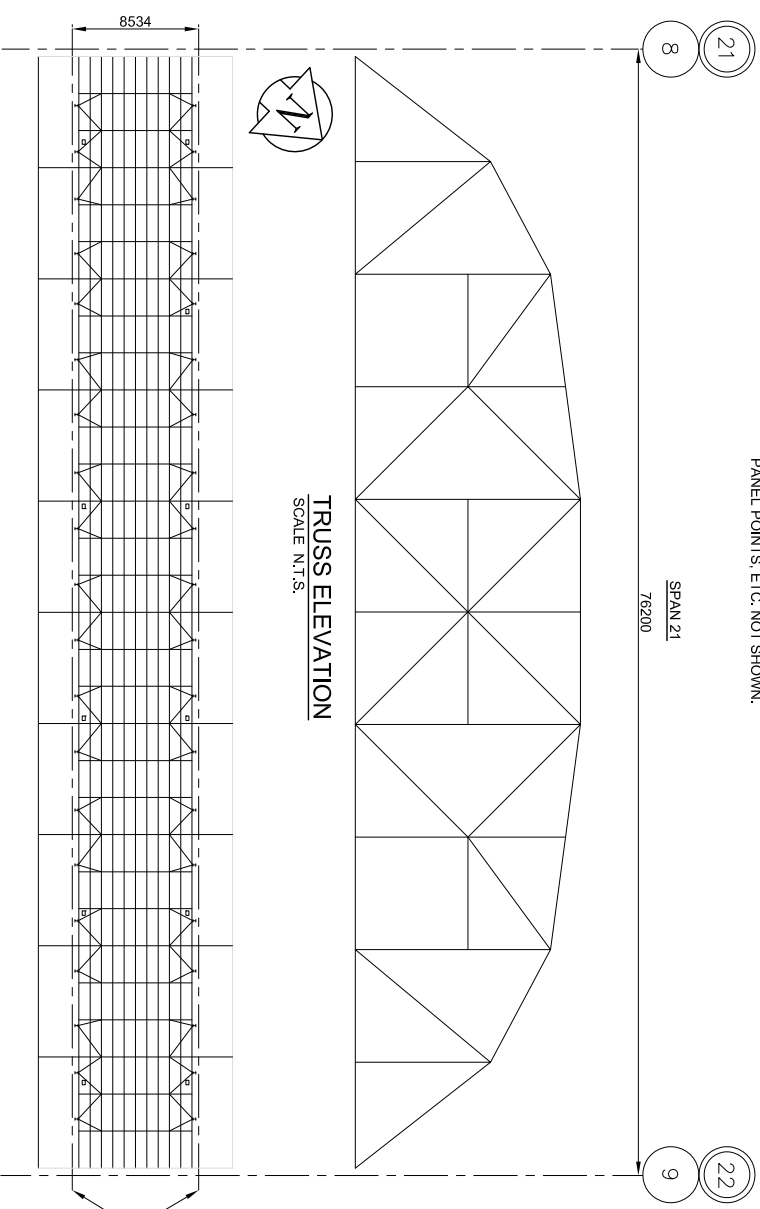


**UNDERSIDE DECK PLAN**  
SCALE N.T.S.  
MAIN FRAMING MEMBERS SHOWN ONLY.  
CROSS BRACING BETWEEN TRUSS  
PANEL POINTS, ETC. NOT SHOWN.



**UNDERSIDE DECK PLAN**  
SCALE N.T.S.

ABBREVIATIONS:  
 FB - FLOOR BEAM  
 G - GIRDER  
 MS - MAIN STRINGER  
 SS - SECONDARY STRINGER  
 D - DIAPHRAGM BEAM  
 ABBREVIATIONS SHOWN IN BOLD ARE  
 MEMBERS TO BE REPAIRED/REPLACED.

**CAMEL BACK TRUSS SPAN REPAIRS**

REPAIR TYPE	DESCRIPTION	LOCATION	ESTIMATED QUANTITIES (PER REPAIR LOCATION)
4	INSTALL NEW DIAPHRAGMS AND SUPPORT BRACKETS ADJACENT TO THE SEVERELY CORRODED DIAPHRAGMS	SPAN 19 (3 LOCATIONS)	1 - W-SHAPE 200x21-1500 LG. 4 - L-SHAPE 152x89x7.9-100 LG. 2 - L-SHAPE 89x76x6.4-200 LG. 16 - 19# BOLTS
5	STRENGTHENING THE TRUSS BOTTOM CHORD WITH NEW STEEL PLATES (TOP & BOTTOM) BOLTED TO THE EXISTING ANGLES	SPAN 19 - BAY 4 (1 LOCATION)	2 - 4400x610x10 PLATES 176 - 16# BOLTS

THE DETAILS AND DIMENSIONS SHOWN ON THE DRAWINGS HAVE BEEN OBTAINED FROM ORIGINAL DESIGN DRAWINGS. CONTRACTOR TO VERIFY ALL DETAILS AND DIMENSIONS AND REPORT ANY DISCREPANCIES TO THE CONTRACT ADMINISTRATOR PRIOR TO COMMENCING WORK.

**NOTE:**

DESIGNED BY: M.M.	ENGINEER'S SEAL		<b>CITY OF WINNIPEG</b> PUBLIC WORKS DEPARTMENT ENGINEERING DIVISION	SHEET 5 OF 12 HORIZONTAL: N.T.S. VERTICAL: N.T.S.
DRAWN BY: J.G.W.	DESIGNED BY: M.M.			
CHECKED BY: D.M.B.	APPROVED BY: D.M.B.	ARLING TON OVERPASS (OPR YARDS) 2020 STRUCTURAL STEEL REPAIRS CAMEL BACK TRUSS SPANS		
ISSUED FOR TENDER	DATE: 27/04/20	BID OPPORTUNITY NO.: 163-2020	CITY DRAWING NUMBER: <b>B106-20-05</b>	

**METRIC**  
 UNITS NUMBERS INDICATE METRIC UNITS  
 DENOMINATED NUMBERS INDICATE METERS