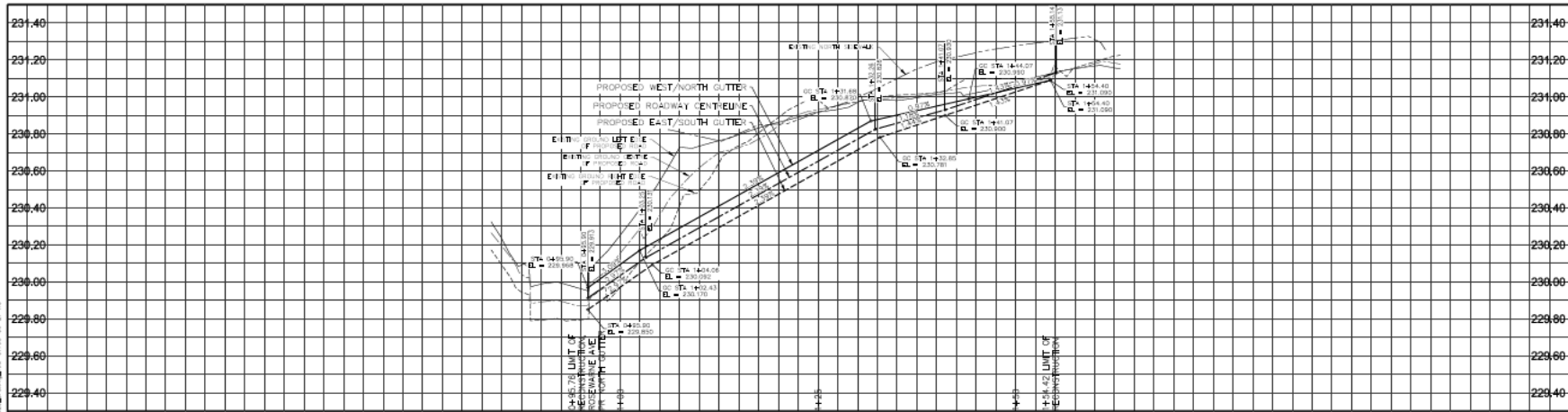
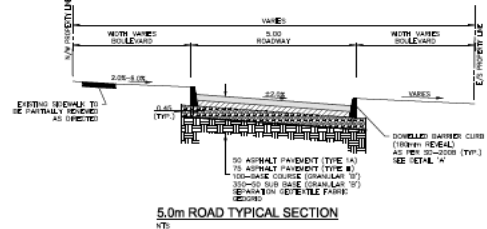
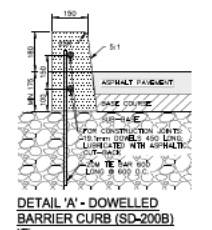
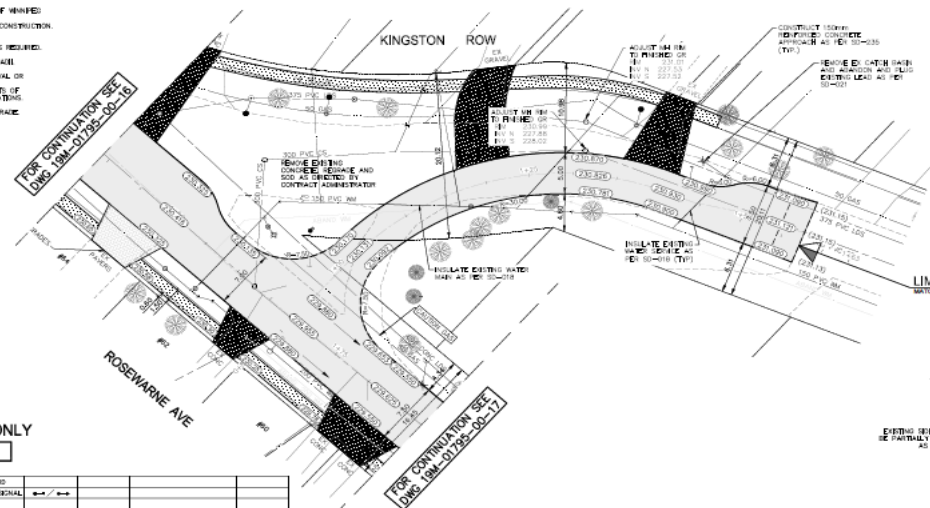


Template Version: eServices-RFP-Consulting20191201

APPENDIX D – REFERENCE MATERIALS



- NOTES:**
1. ALL WORK AND MATERIALS TO BE IN ACCORDANCE WITH THE LATEST EDITION OF THE CITY OF WINNIPEG STANDARD CONSTRUCTION SPECIFICATIONS.
 2. CONTRACTOR TO VERIFY THE LOCATION OF ALL UTILITIES/DEVICES IN THE FIELD PRIOR TO CONSTRUCTION.
 3. ALL ROADWAY INDICATIONS SHOWN ARE TO BACK OF CURB.
 4. REMOVE CURBS AND SIGNALS AS EXISTING BY CONTRACT ADMINISTRATOR.
 5. ALL PRIVATE WALKWAYS TO BE ADJUSTED TO NEW SIGNALS OR TOP OF CURB ELEVATION AS REQUIRED.
 6. ADJUST ALL FRAMES, SIGNS, AND SIGNALS TO NEW GRADES AS REQUIRED.
 7. NOTED: BARRIERS CURBS SHALL BE CONSTRUCTED AT ALL INTERSECTION RACKS AND BACK LANE RACKS.
 8. INSTALL WALKWAY CURB THROUGH ALL INTERSECTIONS.
 9. CONTRACTOR TO TAKE NECESSARY STEPS TO PROTECT EXISTING UTILITIES WITHIN THE LIMITS OF CONSTRUCTION FROM DAMAGE FROM CONSTRUCTION ACTIVITIES AS OUTLINED IN THE SPECIFICATIONS.
 10. ALL ROADWAYS TO BE GRADED UNLESS OTHERWISE NOTED.
 11. ADJUST ALL WATER VALVES, HYDRANTS, MANHOLES, AND CATCH BASINS IN WORK AREA TO GRADE.



METRIC
WHOLE NUMBERS INDICATE MILLIMETRES
DECIMALISED NUMBERS INDICATE METRES

FOR TENDER PURPOSES ONLY
NOT FOR CONSTRUCTION

EXISTING	LEGEND PLAN	PROPOSED	EXISTING	LEGEND PLAN	PROPOSED	EXISTING	LEGEND PROFILE	PROPOSED
WATER MAIN		WATER MAIN	WATER MAIN		WATER MAIN	WATER MAIN		WATER MAIN
LAND DRAINAGE (EXIST)		LAND DRAINAGE (EXIST)	LAND DRAINAGE (EXIST)		LAND DRAINAGE (EXIST)	LAND DRAINAGE (EXIST)		LAND DRAINAGE (EXIST)
WASTE WATER (EXIST)		WASTE WATER (EXIST)	WASTE WATER (EXIST)		WASTE WATER (EXIST)	WASTE WATER (EXIST)		WASTE WATER (EXIST)
HYDRANT		HYDRANT	HYDRANT		HYDRANT	HYDRANT		HYDRANT
WELL/VTB		WELL/VTB	WELL/VTB		WELL/VTB	WELL/VTB		WELL/VTB
MANHOLE		MANHOLE	MANHOLE		MANHOLE	MANHOLE		MANHOLE
CATCH BASIN		CATCH BASIN	CATCH BASIN		CATCH BASIN	CATCH BASIN		CATCH BASIN
CURB INLET		CURB INLET	CURB INLET		CURB INLET	CURB INLET		CURB INLET
UTILITIES ADJUSTED		UTILITIES ADJUSTED	UTILITIES ADJUSTED		UTILITIES ADJUSTED	UTILITIES ADJUSTED		UTILITIES ADJUSTED
WALK		WALK	WALK		WALK	WALK		WALK
HYDRANT		HYDRANT	HYDRANT		HYDRANT	HYDRANT		HYDRANT
WALK		WALK	WALK		WALK	WALK		WALK
WALK		WALK	WALK		WALK	WALK		WALK
PAVEMENT GRADE		PAVEMENT GRADE	PAVEMENT GRADE		PAVEMENT GRADE	PAVEMENT GRADE		PAVEMENT GRADE
ANCHOR		ANCHOR	ANCHOR		ANCHOR	ANCHOR		ANCHOR
CONC. SIGNALS		CONC. SIGNALS	CONC. SIGNALS		CONC. SIGNALS	CONC. SIGNALS		CONC. SIGNALS
ASPHALT		ASPHALT	ASPHALT		ASPHALT	ASPHALT		ASPHALT
IRON BAR		IRON BAR	IRON BAR		IRON BAR	IRON BAR		IRON BAR
CEMENT		CEMENT	CEMENT		CEMENT	CEMENT		CEMENT

LOCATIONS APPROVED UNDERGROUND STRUCTURES		WSP		THE CITY OF WINNIPEG	
NO.	DESCRIPTION	NO.	DESCRIPTION	NO.	DESCRIPTION
1	WATER MAIN	1	WATER MAIN	1	WATER MAIN
2	WASTE WATER	2	WASTE WATER	2	WASTE WATER
3	HYDRANT	3	HYDRANT	3	HYDRANT
4	WELL/VTB	4	WELL/VTB	4	WELL/VTB
5	MANHOLE	5	MANHOLE	5	MANHOLE
6	CATCH BASIN	6	CATCH BASIN	6	CATCH BASIN
7	CURB INLET	7	CURB INLET	7	CURB INLET
8	UTILITIES ADJUSTED	8	UTILITIES ADJUSTED	8	UTILITIES ADJUSTED
9	WALK	9	WALK	9	WALK
10	HYDRANT	10	HYDRANT	10	HYDRANT
11	WALK	11	WALK	11	WALK
12	WALK	12	WALK	12	WALK
13	PAVEMENT GRADE	13	PAVEMENT GRADE	13	PAVEMENT GRADE
14	ANCHOR	14	ANCHOR	14	ANCHOR
15	CONC. SIGNALS	15	CONC. SIGNALS	15	CONC. SIGNALS
16	ASPHALT	16	ASPHALT	16	ASPHALT
17	IRON BAR	17	IRON BAR	17	IRON BAR
18	CEMENT	18	CEMENT	18	CEMENT

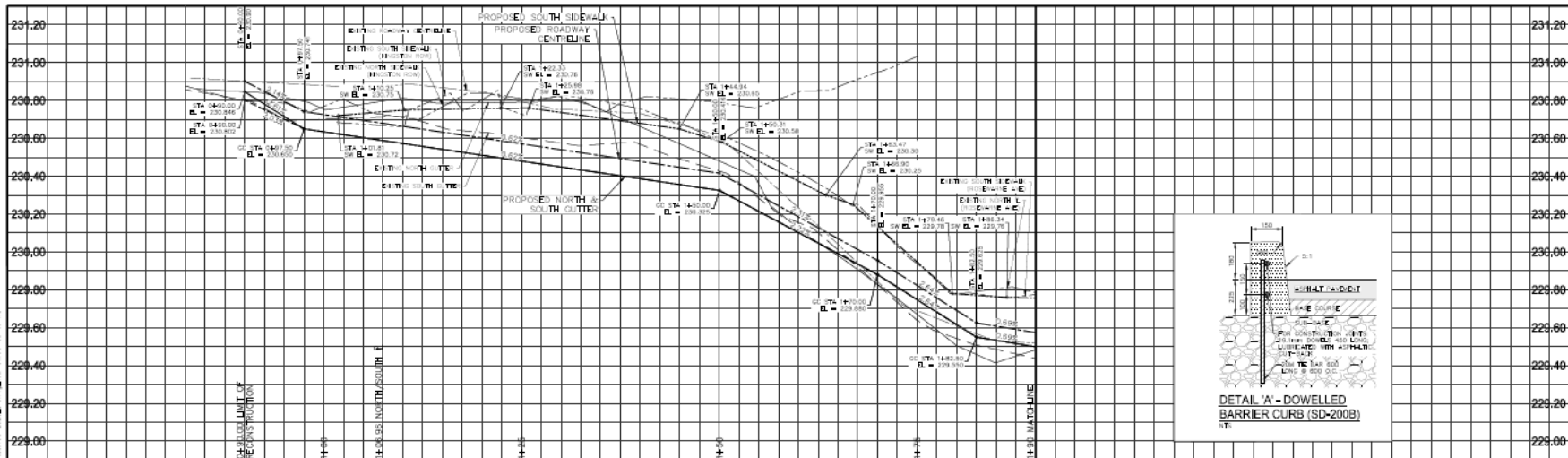
WSP Canada Group Limited
Suite 111 - 90 Lombard Ave
Winnipeg, MB R2B 3B1
1.204.643.3178
LOCAL 468-6888
www.wsp.com

THE CITY OF WINNIPEG
PUBLIC WORKS DEPARTMENT
ENGINEERING SERVICES DIVISION

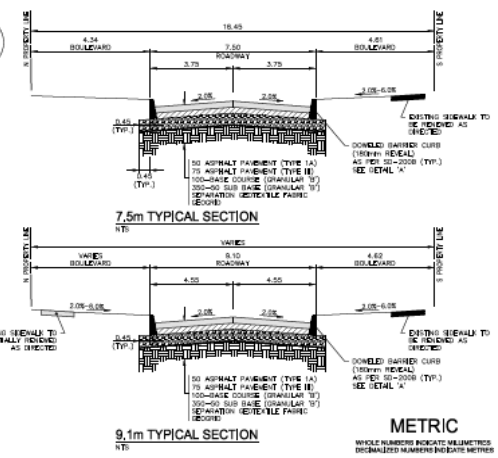
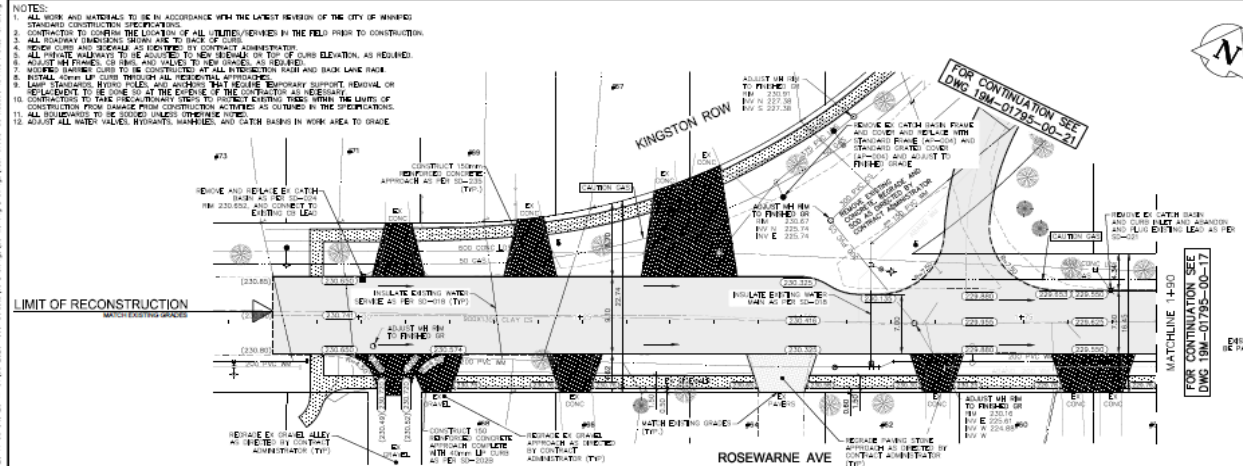
2020 LOCAL STREET PACKAGE
KINGSTON ROW

ASPHALT RECONSTRUCTION
STA. 1+00 TO STA. 1+54.42

21 OF 21
TENDER NO.
108-2020



- NOTES:**
1. ALL WORK AND MATERIALS TO BE IN ACCORDANCE WITH THE LATEST REVISION OF THE CITY OF WINNIPEG STANDARD CONSTRUCTION SPECIFICATIONS.
 2. CONTRACTOR TO CONFIRM THE LOCATION OF ALL UTILITIES/PIPELINES IN THE FIELD PRIOR TO CONSTRUCTION. ALL UNKNOWN UTILITIES SHOWN ARE TO BE CONFIRMED.
 3. EXISTING CURBS AND SIDEWALKS AS EXISTED BY CONTRACT ADMINISTRATION.
 4. ALL EXISTING SIDEWALKS TO BE ADJUSTED TO NEW SIDEWALK OR TOP OF CURB ELEVATION AS REQUIRED.
 5. ADJUST HIGH FINISHES OF CURBS AND VALVES TO NEW GRADES AS REQUIRED.
 6. EXISTING BARRIER CURBS TO BE CONSTRUCTED AT ALL INTERSECTION CORNERS AND BACK LAKE RACE.
 7. EXISTING CURBS TO BE RECONSTRUCTED AT ALL INTERSECTION CORNERS AND BACK LAKE RACE.
 8. EXISTING CURBS TO BE RECONSTRUCTED AT ALL INTERSECTION CORNERS AND BACK LAKE RACE.
 9. EXISTING CURBS TO BE RECONSTRUCTED AT ALL INTERSECTION CORNERS AND BACK LAKE RACE.
 10. CONTRACTORS TO TAKE PRECAUTIONARY STEPS TO PROTECT EXISTING TREES WITHIN THE LIMITS OF CONSTRUCTION FROM DAMAGE FROM CONSTRUCTION ACTIVITIES AS OUTLINED IN THE SPECIFICATIONS.
 11. ALL SIDEWALKS TO BE RECONSTRUCTED UNLESS OTHERWISE NOTED.
 12. ADJUST ALL WATER VALVES, HYDRANTS, MANHOLES, AND GATE VALVES IN WORK AREA TO GRADE.



SYMBOL	DESCRIPTION	SYMBOL	DESCRIPTION
---	WATER MAIN	---	WORD POLE & LIMIT STANDARD
---	LAND DRAINAGE SEWER	---	UTILITY STANDARDS OR TRAFFIC SIGNAL
---	WASTE WATER SEWER	---	HYDRANT POLE
---	HYDRANT	---	CURB RAMP
---	SEWER	---	VEHICLE MARKING SURFACE TILES
---	SEWER	---	EDGE OF SIDEWALK
---	SEWER	---	RENCE
---	SEWER	---	PROPERTY LINE
---	SEWER	---	EDGE OF GRAVEL
---	SEWER	---	EDGE OF PAVING STONE
---	SEWER	---	EDGE OF ASPHALT
---	SEWER	---	EDGE OF CONCRETE
---	SEWER	---	METRIC BARRIER CURB
---	SEWER	---	BARRIER CURB
---	SEWER	---	BARRIER CURB AND OUTLET
---	SEWER	---	CONC SIDEWALK
---	SEWER	---	CONCRETE SLAB
---	SEWER	---	ASPHALT
---	SEWER	---	MILES SURFACE
---	SEWER	---	LEGEND PLAN
---	SEWER	---	PROPOSED
---	SEWER	---	EXISTING
---	SEWER	---	LEGEND PROFILE
---	SEWER	---	PROPOSED
---	SEWER	---	EXISTING

NO.	REVISION	DATE	BY
1	ISSUED FOR TENDER	JANUARY 2020	ELRH
2	REVISED FOR CONSTRUCTION	JANUARY 2020	ELRH
3	REVISED FOR CONSTRUCTION	JANUARY 2020	ELRH
4	REVISED FOR CONSTRUCTION	JANUARY 2020	ELRH
5	REVISED FOR CONSTRUCTION	JANUARY 2020	ELRH
6	REVISED FOR CONSTRUCTION	JANUARY 2020	ELRH
7	REVISED FOR CONSTRUCTION	JANUARY 2020	ELRH
8	REVISED FOR CONSTRUCTION	JANUARY 2020	ELRH
9	REVISED FOR CONSTRUCTION	JANUARY 2020	ELRH
10	REVISED FOR CONSTRUCTION	JANUARY 2020	ELRH

wsp

WSP Canada Group Limited
 Suite 111-321 Lombard Ave
 Winnipeg, MB R2S 0P1
 (204) 943-3378
 1-800-465-0844
 www.wsp.ca

PROJECT NO. 156-01795-00-16
 DATE: JANUARY 2020

FOR TENDER PURPOSES ONLY
NOT FOR CONSTRUCTION

THE CITY OF WINNIPEG
PUBLIC WORKS DEPARTMENT
ENGINEERING SERVICES DIVISION

2020 LOCAL STREET PACKAGE
 ROSEWARNE AVENUE

ASPHALT RECONSTRUCTION
 STA. 0+90 TO STA. 1+90

TENDER NO. 156-2020