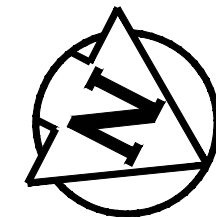


ST VITAL PARK ROAD - MILL & FILL CROSS SECTION
N.T.S.



CONSTRUCTION NOTES

1. REMOVE EXISTING PAVEMENT AND CONSTRUCT NEW 100mm ASPHALT PAVEMENT AS PER DETAILED CROSS SECTION
2. MILL EXISTING ASPHALT AND OVERLAY WITH 80mm ASPHALT PAVEMENT AS PER DETAILED CROSS SECTION
3. REMOVE AND REPLACE EXISTING ASPHALT
4. CONSTRUCT NEW 100mm CONCRETE SIDEWALK
5. REMOVE EXISTING SIDEWALK
6. WIDEN EXISTING APPROACH TO 7.5m & CONSTRUCT NEW 200mm MONOLITHIC CONCRETE CURB
7. REMOVE PARK GATE
8. REMOVE POST BOLLARD
9. INSTALL NEW CULVERT
10. INSTALL CURB RAMP (10mm HT. MONOLITHIC) & DETECTABLE WARNING TILES
11. REMOVE & REPLACE CULVERT
12. REMOVE EXISTING ASPHALT DITCH
13. REMOVE EXISTING ASPHALT DITCH & CONSTRUCT NEW PROPOSED DITCH
14. RE-GRADE EXISTING DITCH

GENERAL NOTES

- A. PAVEMENT DIMENSIONS ARE TO BACK OF CURB / EDGE OF PAVEMENT
- B. ALL CURB RADII UNDER 15.0m SHALL BE MODIFIED
- C. CURB REPLACEMENT AS DIRECTED BY CONTRACT ADMINISTRATOR

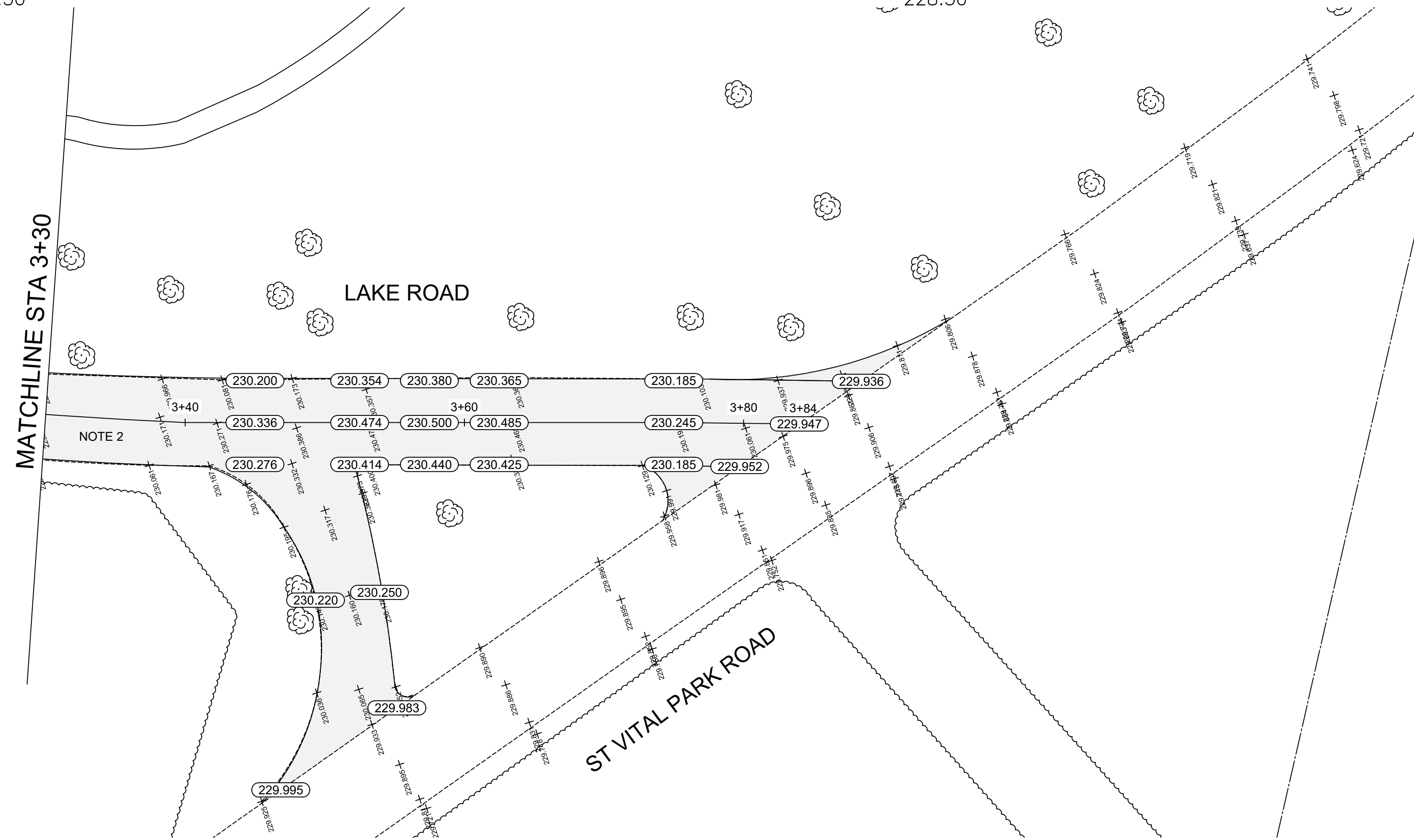
PRELIMINARY

NOT TO BE USED FOR
CONSTRUCTION

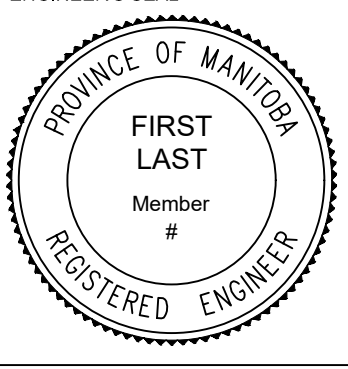
METRIC


WHOLE NUMBERS INDICATE MILLIMETERS
DECIMALIZED NUMBERS INDICATE METERS

BID OPPORTUNITY NO. 129-2020



SYMBOL	DESCRIPTION	SYMBOL	DESCRIPTION	SYMBOL	DESCRIPTION	SYMBOL	DESCRIPTION	DATE
◇	HYDRANT	◆	LDS/WWS	▨	CONCRETE		LOCATION APPROVED	
⊗	VALVE	●	WATERMAIN	▩	CONCRETE SIDEWALK	▭	UNDERGROUND STRUCTURES	B.M. ELEV.
◊	CURB STOP	●	GAS	▩	ASPHALT	▭		
○	MANHOLE	●	TRAFFIC SIGNALS	▩	GRAVEL	▭		
◻	CATCH BASIN	■	HYDRO/STREET LIGHT	▩	DITCH - TOP OF SLOPE	▭		
△	CURB INLET	▲	MTS/SHAW	▩	BUSHLINE	▭		
◊	HYDRO POLE	▲	CURB RENEWAL	▩	NORTH GUTTER	▭		
○	LIGHT STANDARD	●	PROPERTY LINE	▩	CENTER LINE	▭		
○	TRAFFIC SIGNAL POLE	●	RAMP CURB	▩	SOUTH GUTTER	▭		
+	SURVEY BAR	+	ELEVATIONS	▩	NORTH DITCH	▭		
⊕	GEODETIC BENCH MARK	⊕	TREE	▩	SOUTH DITCH	▭		
---	EXISTING LEGEND - PLAN	---	PROPOSED	---	EXISTING LEGEND - PROFILE	---	PROPOSED	

ENGINEERING DIVISION TECHNOLOGY SERVICES BRANCH 106 - 1155 PACIFIC AVE		ENGINEER'S SEAL	
DESIGNED BY	M.S.		
CHECKED BY	M.S.		
DRAWN BY	T.G.		
APPROVED BY			
HOR. SCALE: 1:250 VERTICAL: 1:10			
DATE: 2020/04/20			
1. SUBMIT FOR PLAN APPROVAL 03/11/20 C.H. NO. REVISIONS DATE BY			

 THE CITY OF WINNIPEG PUBLIC WORKS DEPARTMENT		CITY DRAWING NUMBER SE-20-117
LAKE ROAD FROM CENTER ROAD TO ST VITAL PARK ROAD		SHEET 19 OF 21
ASPHALT RENEWAL AND ASSOCIATED WORKS FROM STA. 3+30 TO STA. 3+84		3