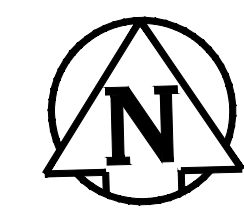
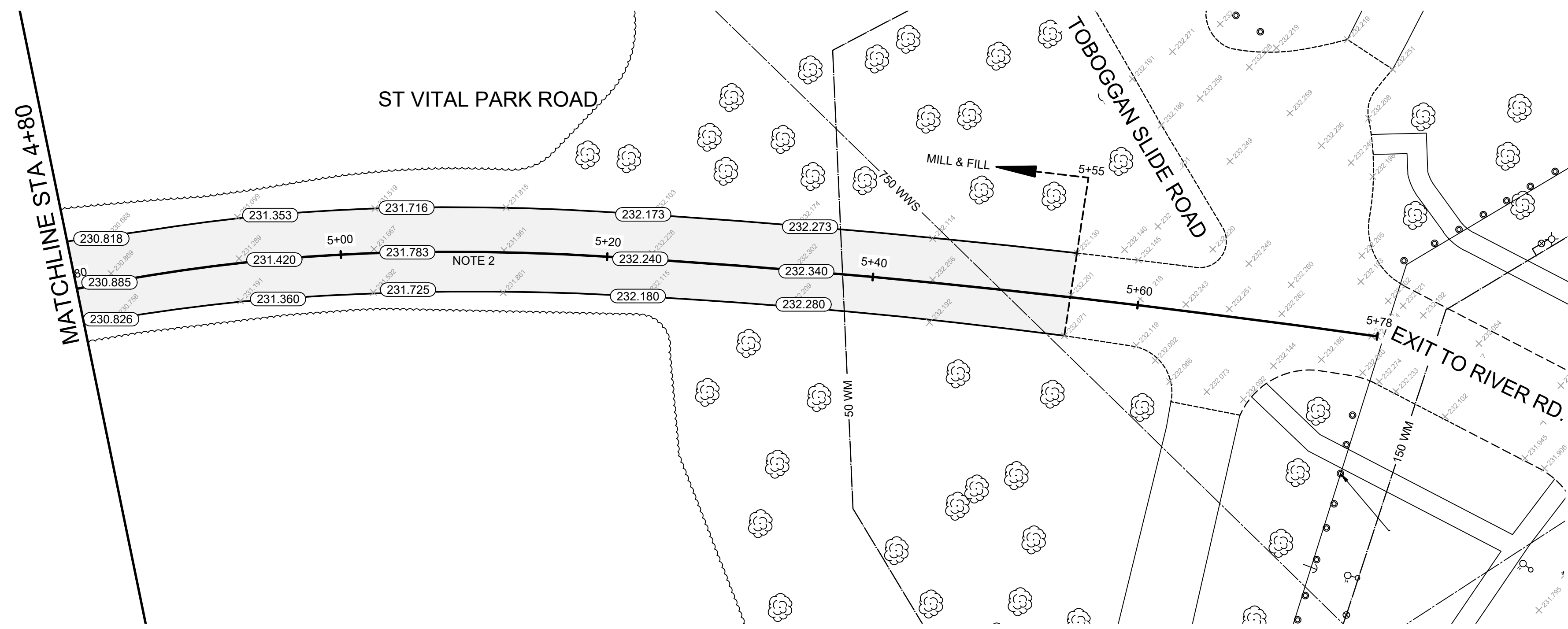


ST VITAL PARK ROAD - MILL & FILL CROSS SECTION (STA: 3+95 - 5+55)  
N.T.S.



- CONSTRUCTION NOTES**
- REMOVE EXISTING PAVEMENT AND CONSTRUCT NEW 100mm ASPHALT PAVEMENT AS PER DETAILED CROSS SECTION
  - MILL EXISTING ASPHALT AND OVERLAY WITH 80mm ASPHALT PAVEMENT AS PER DETAILED CROSS SECTION
  - REMOVE AND REPLACE EXISTING ASPHALT
  - CONSTRUCT NEW 100mm CONCRETE SIDEWALK
  - REMOVE EXISTING SIDEWALK
  - WIDEN EXISTING APPROACH TO 7.5m & CONSTRUCT NEW 200mm MONOLITHIC CONCRETE CURB
  - REMOVE PARK GATE
  - REMOVE POST BOLLARD
  - INSTALL NEW CULVERT
  - INSTALL CURB RAMP (10mm HT. MONOLITHIC) & DETECTABLE WARNING TILES
  - REMOVE & REPLACE CULVERT
  - REMOVE EXISTING ASPHALT DITCH
  - REMOVE EXISTING ASPHALT DITCH & CONSTRUCT NEW PROPOSED DITCH
  - RE-GRADE EXISTING DITCH

- GENERAL NOTES**
- PAVEMENT DIMENSIONS ARE TO BACK OF CURB / EDGE OF PAVEMENT
  - ALL CURB RADII UNDER 15.0m SHALL BE MODIFIED
  - CURB REPLACEMENT AS DIRECTED BY CONTRACT ADMINISTRATOR

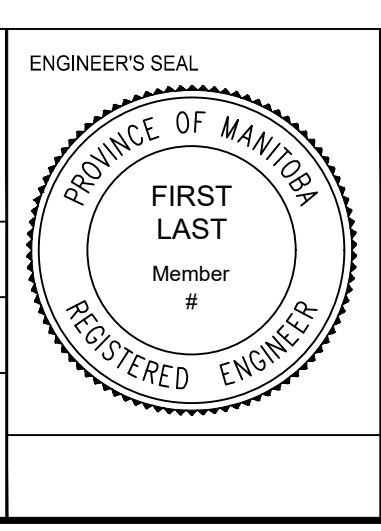
**PRELIMINARY**  
NOT TO BE USED FOR  
CONSTRUCTION

**METRIC**  
WHOLE NUMBERS INDICATE MILLIMETERS  
DECIMALIZED NUMBERS INDICATE METERS  
BID OPPORTUNITY NO. 129-2020

EXISTING	LEGEND - PLAN	PROPOSED	EXISTING	LEGEND - PLAN	PROPOSED	EXISTING	LEGEND - PROFILE	PROPOSED
⊕	HYDRANT	◆	---	LDS/WWS	---	▨	CONCRETE	▨
⊗	VALVE	●	---	WATERMAIN	---	▩	CONCRETE SIDEWALK	▩
⊙	CURB STOP	●	---	GAS	---	▩	ASPHALT	▩
○	MANHOLE	●	---	TRAFFIC SIGNALS	---	▩	GRAVEL	▩
□	CATCH BASIN	■	---	HYDRO/STREET LIGHT	---	▩	DITCH - TOP OF SLOPE	▩
△	CURB INLET	▲	---	MTS/SHAW	---	▩	BUSHLINE	▩
○	HYDRO POLE	▲	---	CURB RENEWAL	---	▩	NORTH GUTTER	▩
○	LIGHT STANDARD	●	---	PROPERTY LINE	---	▩	CENTER LINE	▩
○	TRAFFIC SIGNAL POLE	●	---	RAMP CURB	---	▩	SOUTH GUTTER	▩
⊕	SURVEY BAR	◆	---	ELEVATIONS	(31.000)	▩	NORTH DITCH	▩
⊕	GEODETIC BENCH MARK	◆	---	TREE	---	▩	SOUTH DITCH	▩

NO.	REVISIONS	DATE	BY
1	SUBMIT FOR PLAN APPROVAL	03/11/20	C.H.

ENGINEERING DIVISION TECHNOLOGY SERVICES BRANCH 106 - 1155 PACIFIC AVE			
DESIGNED BY	M.S.	CHECKED BY	M.S.
DRAWN BY	T.G.	APPROVED BY	
HOR. SCALE:	1 : 250		
VERTICAL:	1 : 10		
DATE	2020/04/08		



**THE CITY OF WINNIPEG**  
PUBLIC WORKS DEPARTMENT

**ST VITAL PARK ROAD**  
FROM ST VITAL PARK ROAD TO ST VITAL PARK APPROACH  
ASPHALT RENEWAL AND ASSOCIATED WORKS  
FROM STA. 4+80 TO STA. 5+78

CITY DRAWING NUMBER SE-20-114  
SHEET 16 OF 21  
4