

- CONSTRUCTION NOTES**
- REMOVE EXISTING PAVEMENT AND CONSTRUCT NEW 100mm ASPHALT PAVEMENT AS PER DETAILED CROSS SECTION
 - MILL EXISTING ASPHALT AND OVERLAY WITH 80mm ASPHALT PAVEMENT AS PER DETAILED CROSS SECTION
 - REMOVE AND REPLACE EXISTING ASPHALT
 - CONSTRUCT NEW 100mm CONCRETE SIDEWALK
 - REMOVE EXISTING SIDEWALK
 - WIDEN EXISTING APPROACH TO 7.5m & CONSTRUCT NEW 200mm MONOLITHIC CONCRETE CURB
 - REMOVE PARK GATE
 - REMOVE POST BOLLARD
 - INSTALL NEW CULVERT
 - INSTALL CURB RAMP (10mm HT. MONOLITHIC) & DETECTABLE WARNING TILES
 - REMOVE & REPLACE CULVERT
 - REMOVE EXISTING ASPHALT DITCH
 - REMOVE EXISTING ASPHALT DITCH & CONSTRUCT NEW PROPOSED DITCH
 - RE-GRADE EXISTING DITCH
- GENERAL NOTES**
- PAVEMENT DIMENSIONS ARE TO BACK OF CURB / EDGE OF PAVEMENT
 - ALL CURB RADII UNDER 15.0m SHALL BE MODIFIED
 - CURB REPLACEMENT AS DIRECTED BY CONTRACT ADMINISTRATOR

PRELIMINARY
NOT TO BE USED FOR CONSTRUCTION

METRIC
WHOLE NUMBERS INDICATE MILLIMETERS
DECIMALIZED NUMBERS INDICATE METERS
BID OPPORTUNITY NO. 129-2020

EXISTING	LEGEND - PLAN	PROPOSED	EXISTING	LEGEND - PLAN	PROPOSED	EXISTING	LEGEND - PROFILE	PROPOSED
	HYDRANT			LDS/WWS			CONCRETE	
	VALVE			WATERMAIN			CONCRETE SIDEWALK	
	CURB STOP			GAS			ASPHALT	
	MANHOLE			TRAFFIC SIGNALS			GRAVEL	
	CATCH BASIN			HYDRO/STREET LIGHT			DITCH - TOP OF SLOPE	
	CURB INLET			MTS/SHAW			BUSHLINE	
	HYDRO POLE			CURB RENEWAL			NORTH GUTTER	
	LIGHT STANDARD			PROPERTY LINE			CENTER LINE	
	TRAFFIC SIGNAL POLE			RAMP CURB			SOUTH GUTTER	
	SURVEY BAR			ELEVATIONS			NORTH DITCH	
	GEODETIC BENCH MARK			TREES			SOUTH DITCH	

LOCATION APPROVED UNDERGROUND STRUCTURES

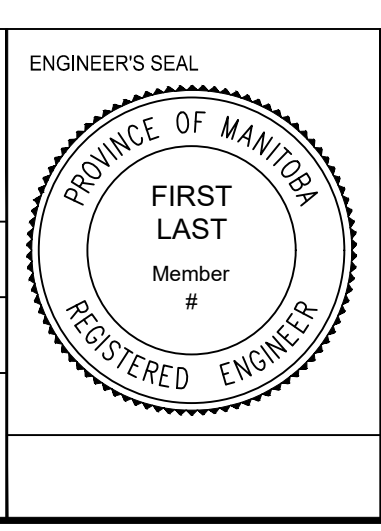
SUPR. U/G STRUCTURES COMMITTEE DATE

NOTE:
LOCATION OF UNDERGROUND STRUCTURES AS SHOWN ARE BASED ON THE BEST INFORMATION AVAILABLE. BUT NO GUARANTEE IS GIVEN THAT ALL EXISTING UTILITIES ARE SHOWN OR THAT THE GIVEN LOCATIONS ARE EXACT. CONFIRMATION OF EXISTENCE AND EXACT LOCATION OF ALL SERVICES MUST BE OBTAINED FROM THE INDIVIDUAL UTILITIES BEFORE PROCEEDING WITH CONSTRUCTION.

NO.	REVISIONS	DATE	BY
1	SUBMIT FOR PLAN APPROVAL	03/11/20	C.H.

ENGINEERING DIVISION TECHNOLOGY SERVICES BRANCH 106 - 1155 PACIFIC AVE

DESIGNED BY	M.S.	CHECKED BY	M.S.
DRAWN BY	T.G.	APPROVED BY	
HOR. SCALE:	1 : 250		
VERTICAL:	1 : 10		
DATE	2020/04/08		



THE CITY OF WINNIPEG PUBLIC WORKS DEPARTMENT

ST VITAL PARK ROAD
FROM ST VITAL PARK ROAD TO ST VITAL PARK APPROACH
ASPHALT RENEWAL AND ASSOCIATED WORKS
FROM STA. 2+30 TO STA. 3+60

CITY DRAWING NUMBER SE-20-112
SHEET 14 OF 21
2