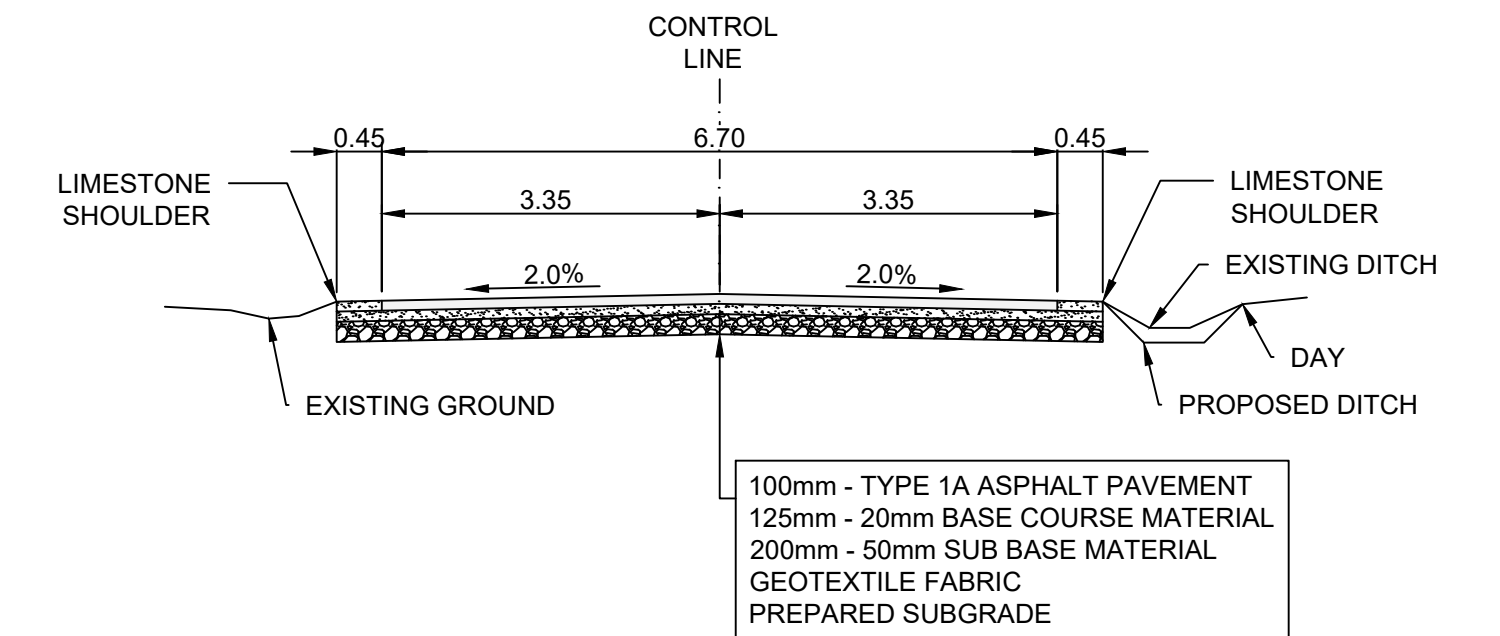
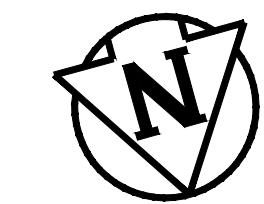
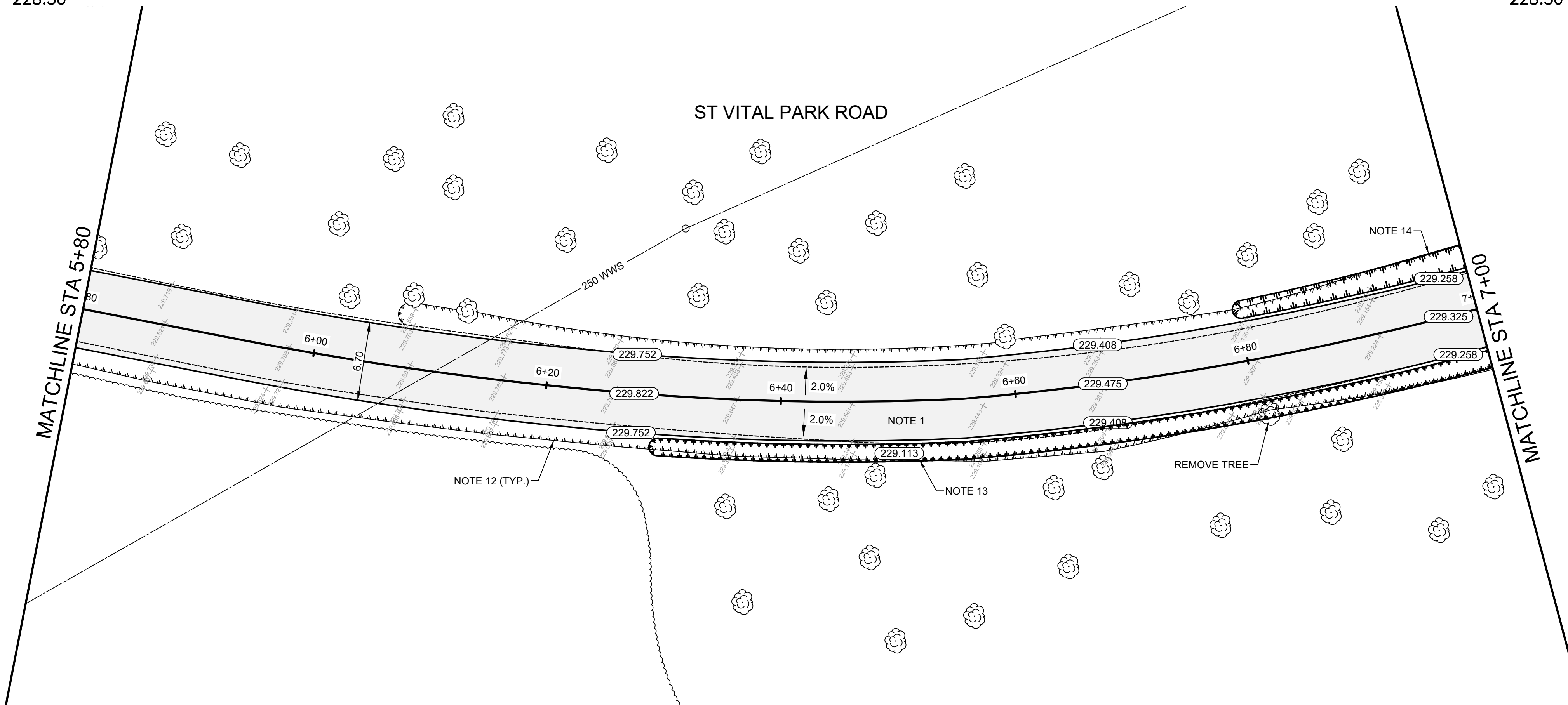


ST VITAL PARK ROAD - ASPHALT RECONSTRUCTION CROSS SECTION (STA: 6+80 - 7+35)
N.T.S.



ST VITAL PARK ROAD - ASPHALT RECONSTRUCTION CROSS SECTION (STA: 6+30 - 6+80)
N.T.S.



- CONSTRUCTION NOTES**
1. REMOVE EXISTING PAVEMENT AND CONSTRUCT NEW 100mm ASPHALT PAVEMENT AS PER DETAILED CROSS SECTION
 2. MILL EXISTING ASPHALT AND OVERLAY WITH 80mm ASPHALT PAVEMENT AS PER DETAILED CROSS SECTION
 3. REMOVE AND REPLACE EXISTING ASPHALT
 4. CONSTRUCT NEW 100mm CONCRETE SIDEWALK
 5. REMOVE EXISTING SIDEWALK
 6. WIDEN EXISTING APPROACH TO 7.5m & CONSTRUCT NEW 200mm MONOLITHIC CONCRETE CURB
 7. REMOVE PARK GATE
 8. REMOVE POST BOLLARD
 9. INSTALL NEW CULVERT
 10. INSTALL CURB RAMP (10mm HT. MONOLITHIC) & DETECTABLE WARNING TILES
 11. REMOVE & REPLACE CULVERT
 12. REMOVE EXISTING ASPHALT DITCH
 13. REMOVE EXISTING ASPHALT DITCH & CONSTRUCT NEW PROPOSED DITCH
 14. RE-GRADE EXISTING DITCH

- GENERAL NOTES**
- A. PAVEMENT DIMENSIONS ARE TO BACK OF CURB / EDGE OF PAVEMENT
 - B. ALL CURB RADII UNDER 15.0m SHALL BE MODIFIED
 - C. CURB REPLACEMENT AS DIRECTED BY CONTRACT ADMINISTRATOR

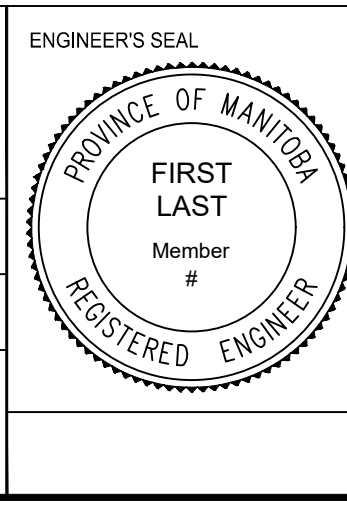
PRELIMINARY
NOT TO BE USED FOR
CONSTRUCTION

METRIC
WHOLE NUMBERS INDICATE MILLIMETERS
DECIMALIZED NUMBERS INDICATE METERS
BID OPPORTUNITY NO. 129-2020

	HYDRANT		LDS/WWS		CONCRETE
	VALVE		WATERMAIN		CONCRETE SIDEWALK
	CURB STOP		GAS		ASPHALT
	MANHOLE		TRAFFIC SIGNALS		GRAVEL
	CATCH BASIN		HYDRO/STREET LIGHT		DITCH - TOP OF SLOPE
	CURB INLET		MTS/SHAW		BUSHLINE
	HYDRO POLE		CURB RENEWAL		NORTH GUTTER
	LIGHT STANDARD		PROPERTY LINE		CENTER LINE
	TRAFFIC SIGNAL POLE		RAMP CURB		SOUTH GUTTER
	SURVEY BAR		ELEVATIONS		NORTH DITCH
	GEODETIC BENCH MARK		TREE		SOUTH DITCH
EXISTING	LEGEND - PLAN	PROPOSED	EXISTING	LEGEND - PLAN	PROPOSED
			EXISTING	LEGEND - PROFILE	PROPOSED

LOCATION APPROVED		B.M. ELEV.
UNDERGROUND STRUCTURES		
SUPR. U/G STRUCTURES COMMITTEE	DATE	
NOTE: LOCATION OF UNDERGROUND STRUCTURES AS SHOWN ARE BASED ON THE BEST INFORMATION AVAILABLE. BUT NO GUARANTEE IS GIVEN THAT ALL EXISTING UTILITIES ARE SHOWN OR THAT THE GIVEN LOCATIONS ARE EXACT. CONFIRMATION OF EXISTENCE AND EXACT LOCATION OF ALL SERVICES MUST BE OBTAINED FROM THE INDIVIDUAL UTILITIES BEFORE PROCEEDING WITH CONSTRUCTION.		
NO.	REVISIONS	DATE BY
1	SUBMIT FOR PLAN APPROVAL	03/11/20 C.H.

ENGINEERING DIVISION TECHNOLOGY SERVICES BRANCH 106 - 1155 PACIFIC AVE			
DESIGNED BY	M.S.	CHECKED BY	M.S.
DRAWN BY	T.G.	APPROVED BY	
HOR. SCALE:	1 : 250		
VERTICAL:	1 : 10		
DATE	2020/04/08		



THE CITY OF WINNIPEG
PUBLIC WORKS DEPARTMENT

ST VITAL PARK ROAD
FROM RIVER DRIVE TO RIVER DRIVE
ASPHALT RENEWAL AND ASSOCIATED WORKS
FROM STA. 5+80 TO STA. 7+00

CITY DRAWING NUMBER SE-20-106	SHEET 8 OF 21
5	