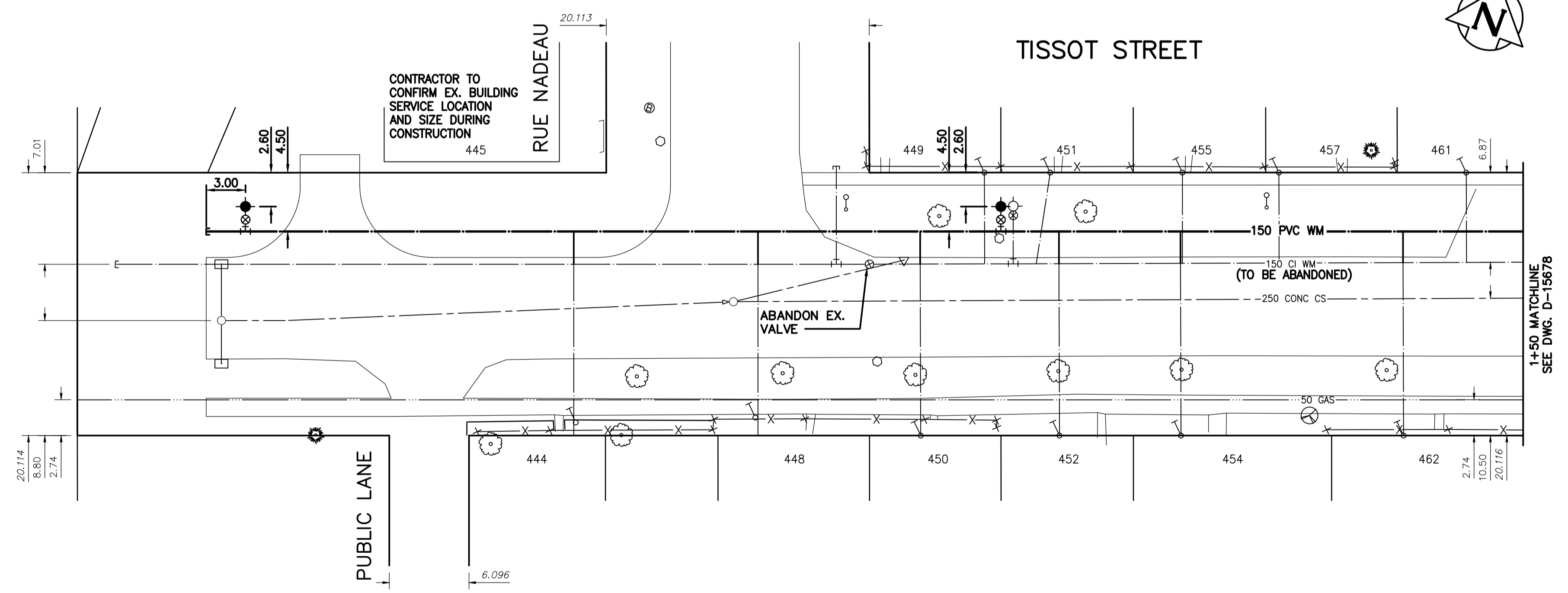


227.0: CHAINAGES SHOWN ARE ALONG CENTRE LINE OF ROW

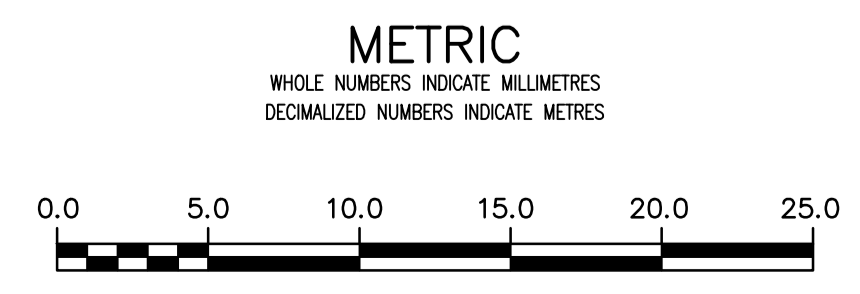


WATER SERVICE INFORMATION

ADDRESS	PIPE SIZE & MATERIAL (STREET)	PIPE SIZE & MATERIAL (PROP.)	SHORT & LONG MEASUREMENT	CORP. LOCATION	REMARKS
444 TISSOT ST	-	T2	8.10 E WLL	-	RECONNECT SERVICE
RESIDENTIAL	-	LEAD	22.40 W EL NADEAU	-	RECONNECT SERVICE
* 445 TISSOT ST	-	-	-	-	RECONNECT SERVICE
RESIDENTIAL	-	-	-	-	RECONNECT SERVICE
448 TISSOT ST	-	20	2.80 E WLL	-	RECONNECT SERVICE
RESIDENTIAL	-	CU	8.70 W EL NADEAU	-	RECONNECT SERVICE
449 TISSOT ST	-	20	2.00 L/RHL	-	RECONNECT SERVICE
RESIDENTIAL	-	CU	-	-	RECONNECT SERVICE
450 TISSOT ST	-	20	2.29 L/RHL	-	RECONNECT SERVICE
RESIDENTIAL	-	CU	-	-	RECONNECT SERVICE
451 TISSOT ST	20	20	9.80 R/LHL	2.74 E OF W/LINE IN BLVD	RECONNECT SERVICE
RESIDENTIAL	-	CU	-	-	RECONNECT SERVICE
452 TISSOT ST	-	20	3.41 L/RHL	-	RECONNECT SERVICE
RESIDENTIAL	-	CU	-	-	RECONNECT SERVICE
454 TISSOT ST	-	20	2.19 R/LHL	-	RECONNECT SERVICE
RESIDENTIAL	-	CU	-	-	RECONNECT SERVICE
455 TISSOT ST	-	20	2.68 R/LHL	-	RECONNECT SERVICE
RESIDENTIAL	-	CU	-	-	RECONNECT SERVICE
457 TISSOT ST	-	20	0.43 R/LHL	-	RECONNECT SERVICE
RESIDENTIAL	-	CU	-	-	RECONNECT SERVICE
461 TISSOT ST	-	20	1.34 L/RHL	-	RECONNECT SERVICE
RESIDENTIAL	-	CU	-	-	RECONNECT SERVICE
462 TISSOT ST	-	20	1.83 R/LHL	-	RECONNECT SERVICE
RESIDENTIAL	-	CU	-	-	RECONNECT SERVICE

* SERVICES TO BE RENEWED TO R

NOTE: VALVES TO BE INSTALLED CLOCKWISE TO CLOSE



LOCATION APPROVED UNDERGROUND STRUCTURES	
SUPV. U/G STRUCTURES COMMITTEE	DATE
NOTE: LOCATION OF UNDERGROUND STRUCTURES AS SHOWN ARE BASED ON THE BEST INFORMATION AVAILABLE BUT NO GUARANTEE IS GIVEN THAT ALL EXISTING UTILITIES ARE SHOWN OR THAT THE GIVEN LOCATIONS ARE EXACT. CONFIRMATION OF EXISTENCE AND EXACT LOCATION OF ALL SERVICES MUST BE OBTAINED FROM THE INDIVIDUAL UTILITIES BEFORE PROCEEDING WITH CONSTRUCTION.	

B.M. 654361 ELEV. 230.628	Provencher Ave. & Archibald, Tbt. in 7.6m Conc. pile in median strip, Valve Box 4.2m E. of W.L. Archibald & 21.6 S. of N.L. of Provencher Ave. Monument 0.2m B.G.L.		
02	ISSUED FOR TENDER	2020.04.01	RS
01	ISSUED FOR 60% REVIEW	2020.03.09	RS
NO.	REVISIONS	DATE	BY



DESIGNED BY	RS	CHECKED BY	RS
DRAWN BY	SC	APPROVED BY	RS
SCALE: HORIZONTAL 1:250 VERTICAL 1:50		RELEASED FOR CONSTRUCTION	
DATE	2019.01.15	DATE	

ENGINEER'S SEAL

ORIGINAL SEALED BY
R.M. SHERLOCK
P. ENG.
2020/04/01

CONSULTANT DRAWING NUMBER
C-218

THE CITY OF WINNIPEG
WATER AND WASTE DEPARTMENT
ENGINEERING DIVISION

2020 WATERMAIN RENEWALS
CONTRACT 4
TISSOT STREET
END W OF RUE NADEAU TO
STA. 1+50

SHEET 20 OF 22
CITY DRAWING NUMBER
D-15677