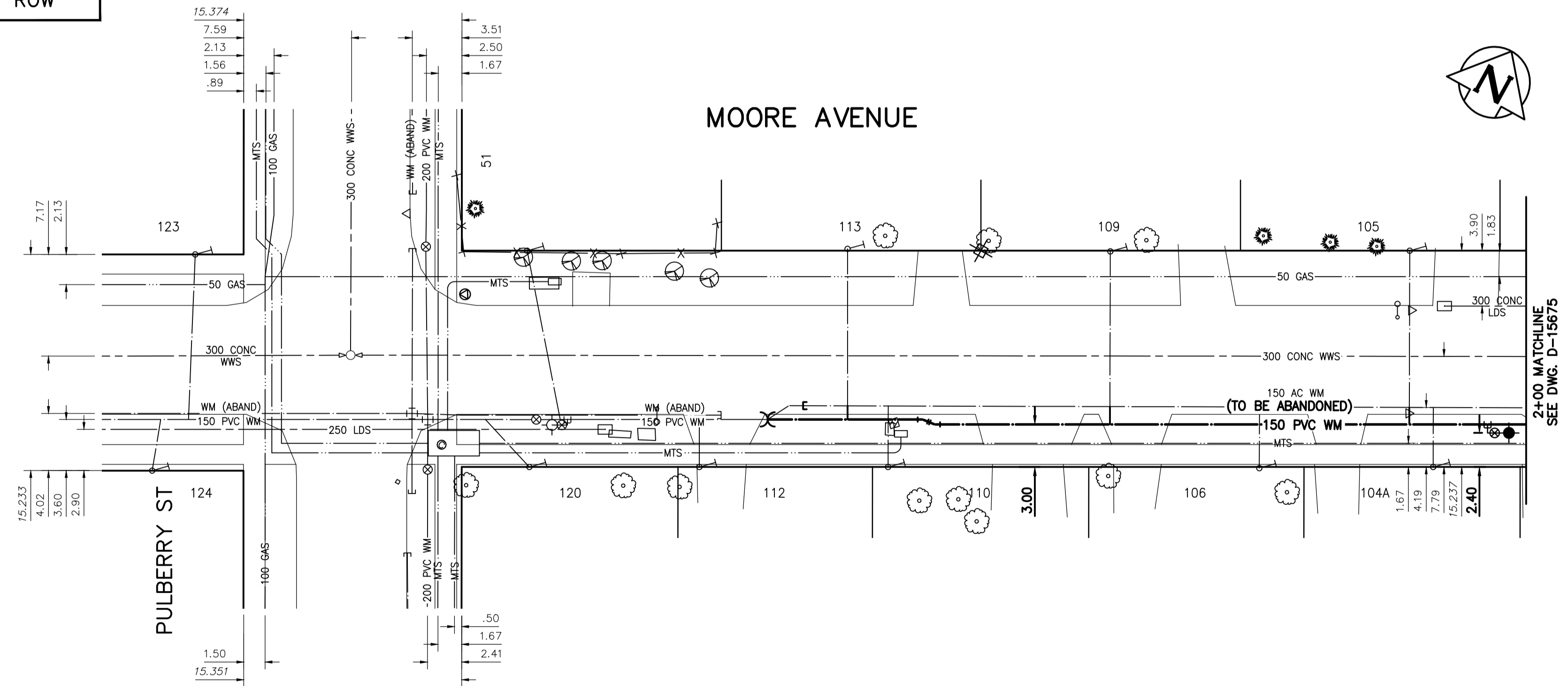


NOTE: CHAINAGES SHOWN ARE ALONG CENTRE LINE OF ROW

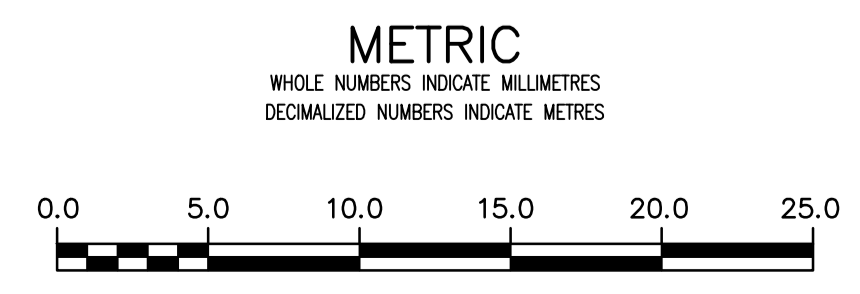


WATER SERVICE INFORMATION

ADDRESS	PIPE SIZE & MATERIAL (STREET)	PIPE SIZE & MATERIAL (PROP.)	SHORT & LONG MEASUREMENT	CORP. LOCATION	REMARKS
104 MOORE AVE	-	20	9.10 E W LL	-	RECONNECT SERVICE
RESIDENTIAL	-	CU	-	-	-
105 MOORE AVE	-	20	3.00 LEFT OF RIGHT	-	RECONNECT SERVICE
RESIDENTIAL	-	CU	-	-	-
106 MOORE AVE	-	20	8.50 W OF E HOUSE LINE	-	RECONNECT SERVICE
RESIDENTIAL	-	CU	-	-	-
109 MOORE AVE	-	20	16.00 WEHL	-	RECONNECT SERVICE
RESIDENTIAL	-	CU	-	-	-
110 MOORE AVE	-	20	6.00 W OF W HOUSE LINE	-	RECONNECT SERVICE
RESIDENTIAL	-	CU	-	-	-
112 MOORE AVE	CU	20	14.40 E/HYDT@120	15.20 E/HYDT@120	OUTSIDE LIMITS
RESIDENTIAL	-	CU	-	-	-
113 MOORE AVE	-	20	14.00 WEHL	-	RECONNECT SERVICE
RESIDENTIAL	-	CU	-	-	-
120 MOORE AVE	20	20	-	0.80 W/HYDT@120	OUTSIDE LIMITS
RESIDENTIAL	CU	CU	0.10 W/HYDT@120	-	-
51 PULBERRY	20	20	-	0.50 E/HYDT@120	OUTSIDE LIMITS
RESIDENTIAL	CU	CU	5.30 E/HYDT@120	-	-
123 MOORE	-	-	-	-	OUTSIDE LIMITS
RESIDENTIAL	-	-	-	-	-
124 MOORE	-	-	-	-	OUTSIDE LIMITS
RESIDENTIAL	-	-	-	-	-

\* SERVICES TO BE RENEWED TO R

NOTE: VALVES TO BE INSTALLED CLOCKWISE TO CLOSE



LOCATION APPROVED UNDERGROUND STRUCTURES		B.M. 84R723 ELEV. 231.197		N.E. Cor. Moore Ave. & Pulberry St., Tblt. on top of 0.05 m dia. x 2.4 m iron pipe, 3.05 m S. of N.L. of Moore Ave. & on E.L. of Pulberry St.	
SUPV. U/G STRUCTURES COMMITTEE	DATE	DESIGNED BY	RS	CHECKED BY	RS
NOTE:		DRAWN BY	SC	APPROVED BY	RS
LOCATION OF UNDERGROUND STRUCTURES AS SHOWN ARE BASED ON THE BEST INFORMATION AVAILABLE BUT NO GUARANTEE IS GIVEN THAT ALL EXISTING UTILITIES ARE SHOWN OR THAT THE GIVEN LOCATIONS ARE EXACT. CONFIRMATION OF EXISTENCE AND EXACT LOCATION OF ALL SERVICES MUST BE OBTAINED FROM THE INDIVIDUAL UTILITIES BEFORE PROCEEDING WITH CONSTRUCTION.		SCALE:		RELEASED FOR CONSTRUCTION	
		HORIZONTAL	1:250	DATE	2019.01.15
		VERTICAL	1:50	DATE	
		NO.	REVISIONS	DATE	BY
		02	ISSUED FOR TENDER	2020.04.01	RS
		01	ISSUED FOR 60% REVIEW	2020.03.09	RS



DESIGNED BY	RS	CHECKED BY	RS
DRAWN BY	SC	APPROVED BY	RS
SCALE:		RELEASED FOR CONSTRUCTION	
HORIZONTAL	1:250	DATE	
VERTICAL	1:50	DATE	
DATE	2019.01.15	DATE	

ENGINEER'S SEAL  
ORIGINAL SEALED BY  
R.M. SHERLOCK  
P. ENG.  
2020/04/01  
CONSULTANT DRAWING NUMBER  
C-215  
TENDER NUMBER: 119-2020

THE CITY OF WINNIPEG  
WATER AND WASTE DEPARTMENT  
ENGINEERING DIVISION  
2020 WATERMAIN RENEWALS  
CONTRACT 4  
MOORE AVENUE  
PULBERRY ST TO  
STA. 2+00  
SHEET 17 OF 22  
CITY DRAWING NUMBER  
D-15674  
FILE PATH: V:\1112\active\111219000\0300\_drawing\0302\_sheet\_files\02\_civil\