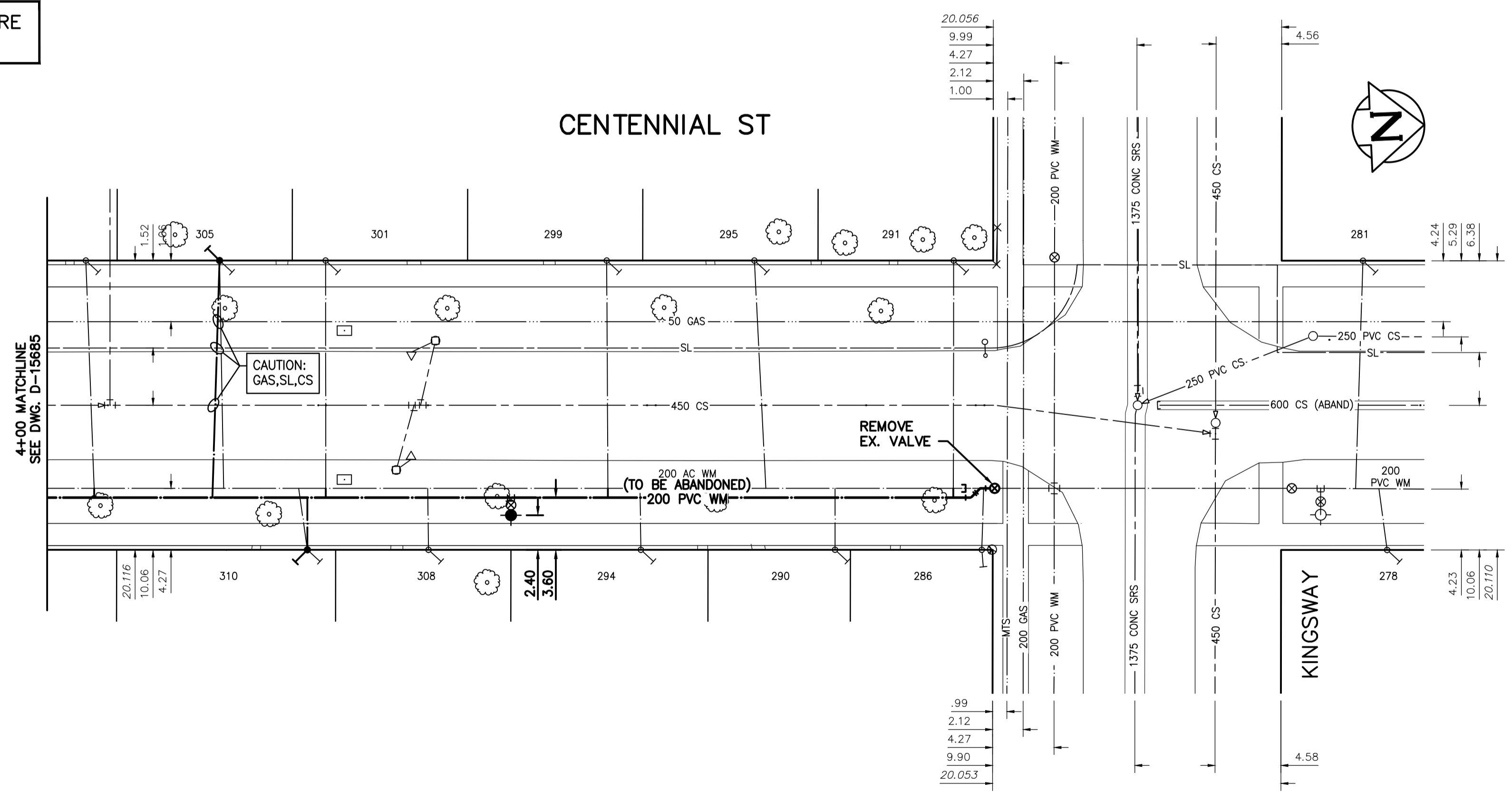


NOTE: CHAINAGES SHOWN ARE ALONG CENTRE LINE OF ROW

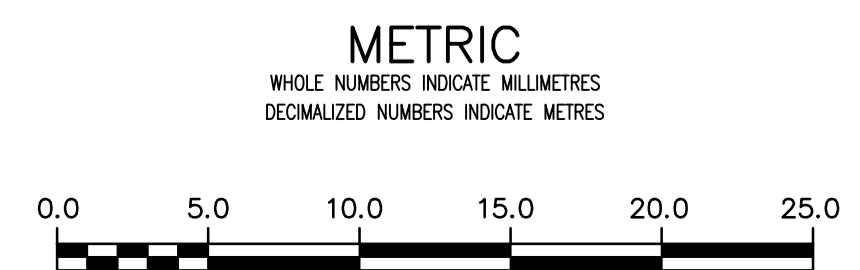


WATER SERVICE INFORMATION

ADDRESS	PIPE SIZE & MATERIAL (STREET)	PIPE SIZE & MATERIAL (PROP.)	SHORT & LONG MEASUREMENT	CORP. LOCATION	REMARKS
* 310 CENTENNIAL ST	12	20	0.61 S/NHL	0.61 S/SC	RENEW SERVICE
RESIDENTIAL	LEAD	CU	48.17 S/SL KINGSWAY		
308 CENTENNIAL ST	20	20	3.35 N/SBL	0.61 S/SC	RECONNECT SERVICE
RESIDENTIAL	CU	CU	-		
* 305 CENTENNIAL ST	20	20	3.05 N/SBL	0.46 N/SC	RENEW SERVICE
RESIDENTIAL	LEAD	LEAD	55.18 S/SL KINGSWAY		
301 CENTENNIAL ST	20	20	0.61 N/SHL	0.61 S/SC	RECONNECT SERVICE
RESIDENTIAL	CU	CU	47.26 S/SL KINGSWAY		
299 CENTENNIAL ST	20	20	1.83 S/NHL	OPP S/C	RECONNECT SERVICE
RESIDENTIAL	CU	CU	27.44 S/SL KINGSWAY		
294 CENTENNIAL ST	12	20	2.9 N/SHL	0.3 S/SC	RECONNECT SERVICE
RESIDENTIAL	CU	CU	-		
295 CENTENNIAL ST	20	20	3.81 S/NHL	0.61 N/SC	RECONNECT SERVICE
RESIDENTIAL	CU	CU	17.23 S/SL KINGSWAY		
290 CENTENNIAL ST	12	12	1.07 S/NHL	OPP S/C	RECONNECT SERVICE
RESIDENTIAL	CU	LEAD	11.89 S/SL KINGSWAY		
291 CENTENNIAL ST	20	20	2.74 S/NHL	OPP S/C	RECONNECT SERVICE
RESIDENTIAL	CU	CU	4.27 S/SL KINGSWAY		
286 CENTENNIAL ST	20	20	0.91 S/NBL	OPP S/C	RECONNECT SERVICE
RESIDENTIAL	CU	CU	0.81 S/NPL		
281 CENTENNIAL ST					OUTSIDE LIMITS
RESIDENTIAL					
278 CENTENNIAL ST					OUTSIDE LIMITS
RESIDENTIAL					

* SERVICES TO BE RENEWED TO R

NOTE: VALVES TO BE INSTALLED COUNTER-CLOCKWISE TO CLOSE



LOCATION APPROVED UNDERGROUND STRUCTURES		B.M. Z51-35 ELEV. 234.061	S.E. Cor. Kingsway & Beaverbrook St., Brass plug in 7.3m Conc. pile 2.5m N. of S.L. Kingsway & 0.6m E. of E.L. Beaverbrook St.
SUPV. U/G STRUCTURES COMMITTEE	DATE		
NOTE: LOCATION OF UNDERGROUND STRUCTURES AS SHOWN ARE BASED ON THE BEST INFORMATION AVAILABLE BUT NO GUARANTEE IS GIVEN THAT ALL EXISTING UTILITIES ARE SHOWN OR THAT THE GIVEN LOCATIONS ARE EXACT. CONFIRMATION OF EXISTENCE AND EXACT LOCATION OF ALL SERVICES MUST BE OBTAINED FROM THE INDIVIDUAL UTILITIES BEFORE PROCEEDING WITH CONSTRUCTION.			
02	ISSUED FOR TENDER	2020.04.01	RS
01	ISSUED FOR 60% REVIEW	2020.03.09	RS
NO.	REVISIONS	DATE	BY



DESIGNED BY	RS	CHECKED BY	RS
DRAWN BY	SC	APPROVED BY	RS
SCALE:		RELEASED FOR CONSTRUCTION	
HORIZONTAL	1:250		
VERTICAL	1:50		
DATE	2019.01.15	DATE	

ENGINEER'S SEAL
ORIGINAL SEALED BY R.M. SHERLOCK P. ENG. 2020/04/01
CONSULTANT DRAWING NUMBER C-205
TENDER NUMBER: 118-2020

THE CITY OF WINNIPEG
WATER AND WASTE DEPARTMENT
ENGINEERING DIVISION

2020 WATERMAIN RENEWALS
CONTRACT 2
CENTENNIAL STREET
STA. 4+00 TO KINGSWAY

SHEET 07 OF 19
CITY DRAWING NUMBER D-15686