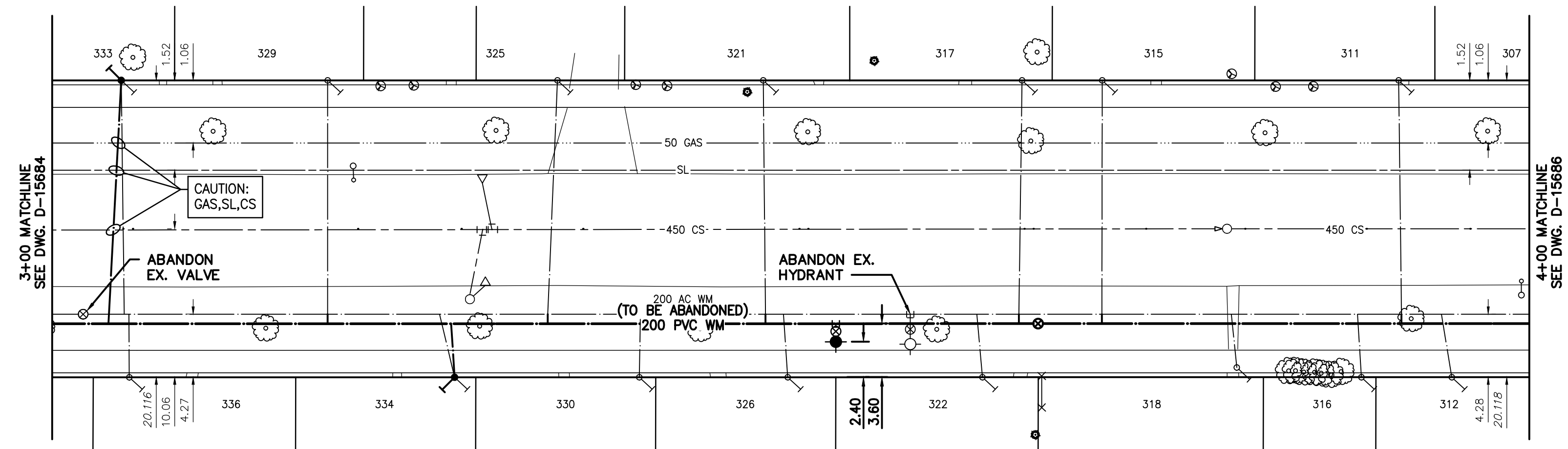
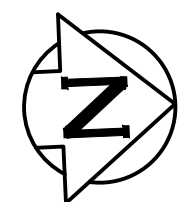


NOTE: CHAINAGES SHOWN ARE ALONG CENTRE LINE OF ROW

CENTENNIAL ST

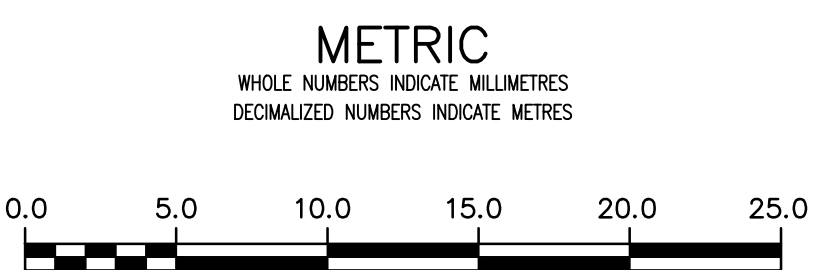


WATER SERVICE INFORMATION

ADDRESS	PIPE SIZE & MATERIAL (STREET)	PIPE SIZE & MATERIAL (PROP.)	SHORT & LONG MEASUREMENT	CORP. LOCATION	REMARKS
336 CENTENNIAL ST	0	20	0.3 N/SHL	0.3 S/SC	RECONNECT SERVICE
RESIDENTIAL	CU	CU	161.59 S/SL KINGSWAY		
* 334 CENTENNIAL ST	20	20	1.43 S/NHL	0.76 S/SC	RENEW SERVICE
RESIDENTIAL	LEAD	LEAD	140.55 S/SL KINGSWAY		
* 333 CENTENNIAL ST	12	12	1.52 S/NBL	OPP S/C	RENEW SERVICE
RESIDENTIAL	LEAD	LEAD	-		
330 CENTENNIAL ST	20	20	0.3 S/NHL	OPP S/C	RECONNECT SERVICE
RESIDENTIAL	CU	CU	129.42 S/SL KINGSWAY		
329 CENTENNIAL ST	20	20	1.37 S/NHL	OPP S/C	RECONNECT SERVICE
RESIDENTIAL	CU	CU	-		
326 CENTENNIAL ST	20	20	1.52 S/NHL	0.3 S/SC	RECONNECT SERVICE
RESIDENTIAL	CU	CU	116.92 S/SL KINGSWAY		
325 CENTENNIAL ST	20	12	1.22 S/NHL	0.3 S/SC	RECONNECT SERVICE
RESIDENTIAL	CU	LEAD	132.62 S/SL KINGSWAY		
322 CENTENNIAL ST	20	20	0.76 S/NHL	0.3 S/SC	RECONNECT SERVICE
RESIDENTIAL	CU	CU	103.2 S/SL KINGSWAY		
321 CENTENNIAL ST	20	20	3.66 S/NHL	OPP/SC	RECONNECT SERVICE
RESIDENTIAL	CU	CU	118.69 S/SL KINGSWAY		
318 CENTENNIAL ST	20	12	1.83 S/NHL	0.3 S/SC	RECONNECT SERVICE
RESIDENTIAL	CU	LEAD	19.21 S 1ST HYD S KINGSWAY		
317 CENTENNIAL ST	20	20	1.22 S/NHL	0.46 S/SC	RECONNECT SERVICE
RESIDENTIAL	CU	CU	101.07 S/SL KINGSWAY		
316 CENTENNIAL ST	20	20	1.83 S/NHL	0.3 S/SC	RECONNECT SERVICE
RESIDENTIAL	CU	CU	30.49 N 1ST HYD S KINGSWAY		
315 CENTENNIAL ST	20	20	1.98 S/NHL	OPP S/C	RECONNECT SERVICE
RESIDENTIAL	CU	CU	94.36 S/SL KINGSWAY		
312 CENTENNIAL ST	20	20	OPP SHL	0.61 S/SC	RECONNECT SERVICE
RESIDENTIAL	CU	CU	71.65 S/SL KINGSWAY		
311 CENTENNIAL ST	20	20	0.61 S/NHL	0.3 N/SC	RECONNECT SERVICE
RESIDENTIAL	CU	CU	75.3 S/SL KINGSWAY		
307 CENTENNIAL ST	20	20	1.68 S/NHL	1.1 S/NHL	RECONNECT SERVICE
RESIDENTIAL	CU	CU	64.94 S/SL KINGSWAY		

* SERVICES TO BE RENEWED TO R

NOTE: VALVES TO BE INSTALLED COUNTER-CLOCKWISE TO CLOSE



LOCATION APPROVED UNDERGROUND STRUCTURES

SUPV. U/G STRUCTURES COMMITTEE DATE

NOTE: LOCATION OF UNDERGROUND STRUCTURES AS SHOWN ARE BASED ON THE BEST INFORMATION AVAILABLE BUT NO GUARANTEE IS GIVEN THAT ALL EXISTING UTILITIES ARE SHOWN OR THAT THE GIVEN LOCATIONS ARE EXACT. CONFIRMATION OF EXISTENCE AND EXACT LOCATION OF ALL SERVICES MUST BE OBTAINED FROM THE INDIVIDUAL UTILITIES BEFORE PROCEEDING WITH CONSTRUCTION.

B.M. Z51-35 ELEV. 234.061	S.E. Cor. Kingsway & Beaverbrook St., Brass plug in 7.3m Conc. pile 2.5m N. of S.L. Kingsway & 0.6m E. of E.L. Beaverbrook St.		
02	ISSUED FOR TENDER	2020.04.01	RS
01	ISSUED FOR 60% REVIEW	2020.03.09	RS
NO.	REVISIONS	DATE	BY

DESIGNED BY: RS

CHECKED BY: RS

DRAWN BY: SC

APPROVED BY: RS

SCALE: HORIZONTAL 1:250, VERTICAL 1:50

DATE: 2019.01.15

PLOT DATE: 2020 04 01

ENGINEER'S SEAL

ORIGINAL SEALED BY R.M. SHERLOCK P. ENG. 2020/04/01

CONSULTANT DRAWING NUMBER: C-204

TENDER NUMBER: 118-2020

THE CITY OF WINNIPEG
WATER AND WASTE DEPARTMENT
ENGINEERING DIVISION

2020 WATERMAIN RENEWALS
CONTRACT 2
CENTENNIAL STREET
STA. 3+00 TO STA. 4+00

SHEET 06 OF 19
CITY DRAWING NUMBER: D-15685

FILE PATH: V:\1112\active\111218970\0300_drawing\0302_sheet_files\02_civil\