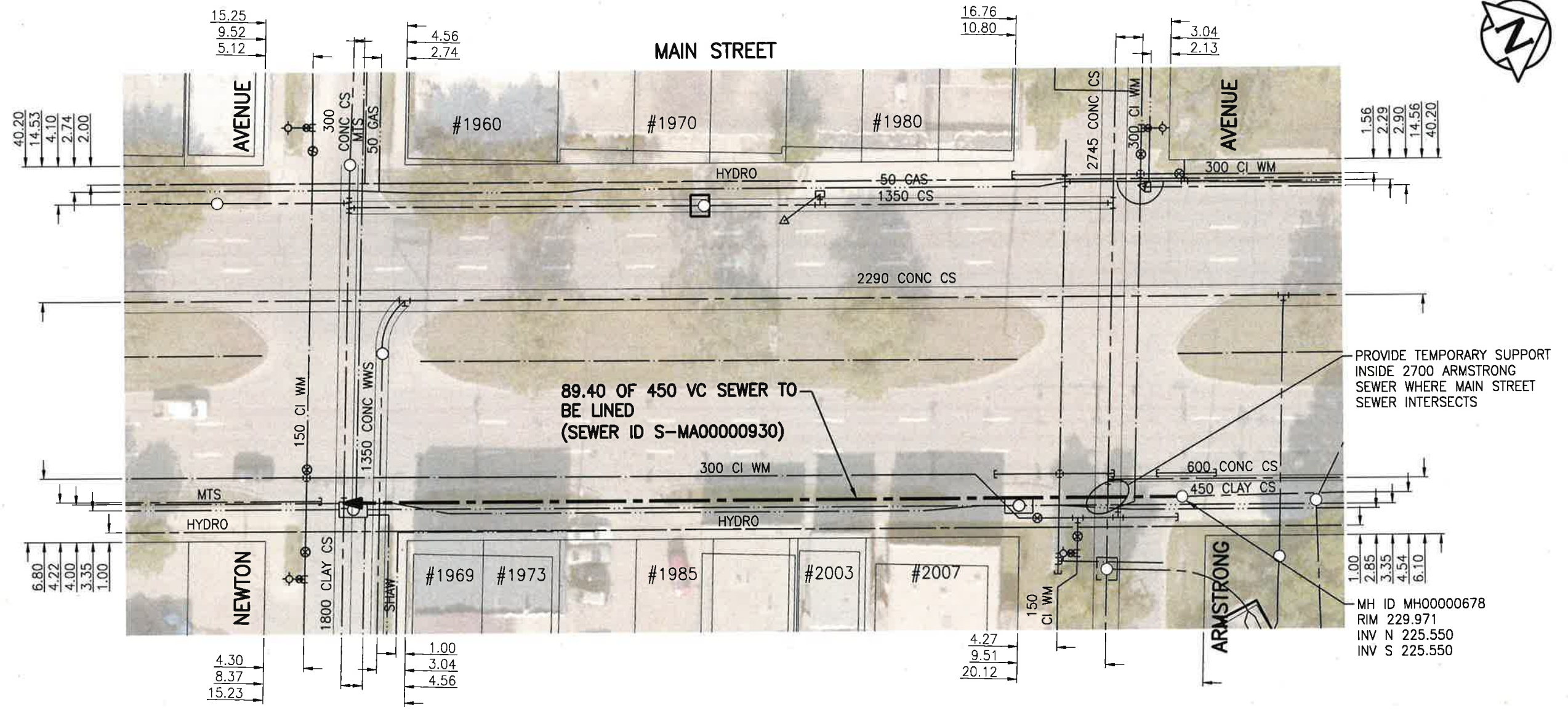


**SEWER JUNCTION INFORMATION FROM SEWER VIDEO INSPECTION**

SEWER ID S-MA0000930		
DISTANCE FROM MH0000678		
DISTANCE	DIAMETER	CLOCK
19.9	150	12
20.8	150	12
24.4	150	11
25.6	150	11
32.1	200	3
33.6	150	10
40.5	150	10
48.2	150	12
49.0	150	10
54.8	150	3
58.7	150	10
64.0	150	12
67.3	150	10
74.3	150	10
84.6	150	10



**WARNING**

IF POWER EQUIPMENT OR EXPLOSIVES ARE TO BE USED FOR EXCAVATION ON THIS PROJECT THE CONTRACTOR MUST:

- 1) NOTIFY THE GAS COMPANY OF THE PROPOSED LOCATION OF EXCAVATION.
  - 2) TAKE PRECAUTION TO AVOID DAMAGE TO GAS COMPANY INSTALLATIONS.
- SEE PROVINCIAL REGULATION 140/92 FOR DETAILS

**ENGINEERS  
GEOSCIENTISTS  
MANITOBA**

Certificate of Authorization  
Stantec Consulting Ltd.  
No. 1301

**METRIC**

WHOLE NUMBERS INDICATE MILLIMETRES  
DECIMALIZED NUMBERS INDICATE METRES

1:500

TENDER NO. 117-2020

**LOCATION APPROVED UNDERGROUND STRUCTURES**

SUPV. U/G STRUCTURES COMMITTEE DATE

**NOTE:**  
LOCATION OF UNDERGROUND STRUCTURES AS SHOWN ARE BASED ON THE BEST INFORMATION AVAILABLE BUT NO GUARANTEE IS GIVEN THAT ALL EXISTING UTILITIES ARE SHOWN OR THAT THE GIVEN LOCATIONS ARE EXACT. CONFIRMATION OF EXISTENCE AND EXACT LOCATION OF ALL SERVICES MUST BE OBTAINED FROM THE INDIVIDUAL UTILITIES BEFORE PROCEEDING WITH CONSTRUCTION.

NO.	REVISIONS	DATE	BY
2	ISSUED FOR TENDER	20.03.20	RS
1	ISSUED FOR REVIEW	20.03.09	RS

**Stantec**  
905 Waverley Street, Winnipeg, Manitoba  
Tel 204-489-5900 Fax 204-453-9012

DESIGNED BY	RS	CHECKED BY	RS
DRAWN BY	SC	APPROVED BY	RS
HOR. SCALE:	1:500	RELEASED FOR CONSTRUCTION:	
VERTICAL:		DATE	MR 19/20

DATE 20.01.06

ENGINEER'S SEAL

CONSULTANT DRAWING NO.  
**C-148**

**THE CITY OF WINNIPEG**  
WATER AND WASTE DEPARTMENT

2019 SEWER RENEWALS BY CIPP LINING  
CONTRACT 7  
**MAIN STREET**  
MH AT ARMSTRONG AVE TO  
NODE AT NEWTON AVE

SHEET	OF
<b>50</b>	<b>50</b>
CAD FILE DRAWING NUMBER <b>18920c-141-934.dwg</b>	
CITY DRAWING NUMBER <b>12441</b>	

V:\1112\active\111218920\0300\_drawing\0302\_sheet\_files\02\_civil\18920c-141-934.dwg