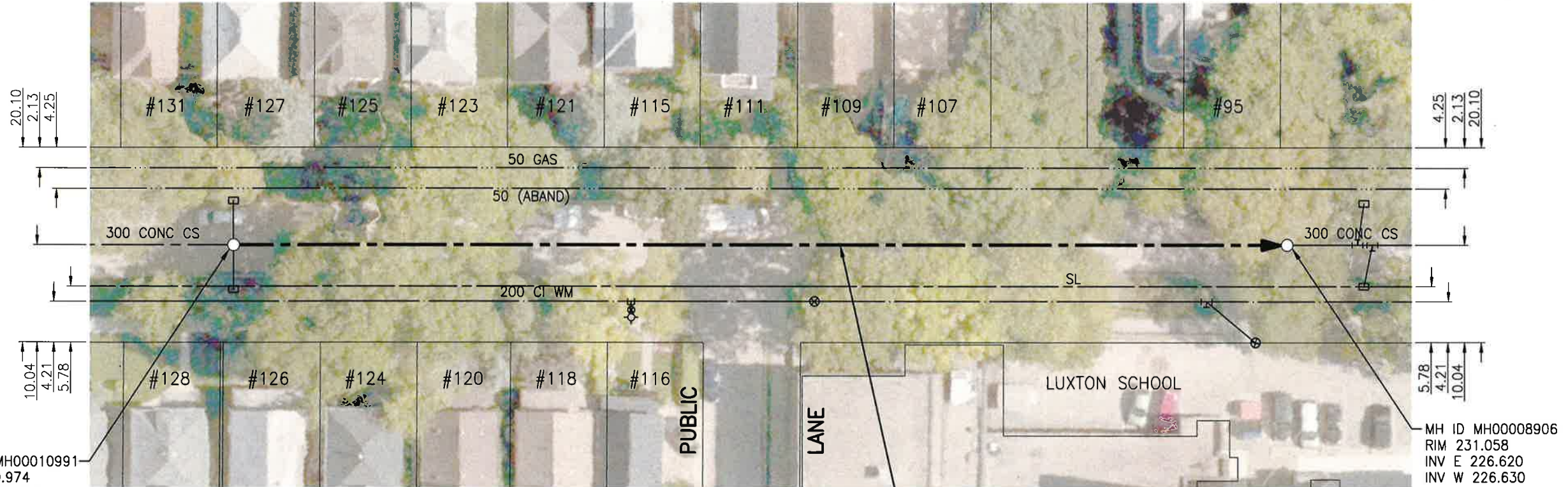




**SEWER JUNCTION INFORMATION FROM SEWER VIDEO INSPECTION**

SEWER ID S-MA00008872		
DISTANCE FROM MH00008906		
DISTANCE	DIAMETER	CLOCK
2.0	150	10
2.4	150	2
12.6	150	10
13.2	150	2
22.2	150	10
22.8	150	2
32.5	150	10
33.1	150	2
34.3	150	10
42.1	150	10
42.9	150	2
52.1	150	10
52.8	150	2
62.1	150	10
62.9	150	2
66.7	150	10
71.9	150	10
72.7	150	2
81.8	150	10
82.6	150	2
92.4	150	10
93.2	150	2
102.4	150	10
103.2	150	2



MH ID MH00010991  
RIM 230.974  
INV E 227.170  
INV W 227.170

MH ID MH00008906  
RIM 231.058  
INV E 226.620  
INV W 226.630

111.20 OF 375 VC SEWER TO BE LINED (SEWER ID S-MA00008872)

**WARNING**

IF POWER EQUIPMENT OR EXPLOSIVES ARE TO BE USED FOR EXCAVATION ON THIS PROJECT THE CONTRACTOR MUST:

- 1) NOTIFY THE GAS COMPANY OF THE PROPOSED LOCATION OF EXCAVATION.
  - 2) TAKE PRECAUTION TO AVOID DAMAGE TO GAS COMPANY INSTALLATIONS.
- SEE PROVINCIAL REGULATION 140/92 FOR DETAILS



Certificate of Authorization  
Stantec Consulting Ltd.  
No. 1301

**METRIC**

WHOLE NUMBERS INDICATE MILLIMETRES  
DECIMALIZED NUMBERS INDICATE METRES



TENDER NO. 117-2020

**LOCATION APPROVED UNDERGROUND STRUCTURES**

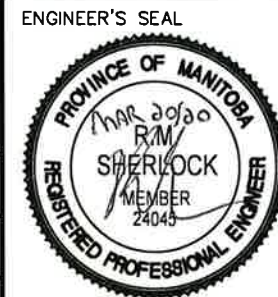
SUPV. U/G STRUCTURES COMMITTEE DATE

**NOTE:**  
LOCATION OF UNDERGROUND STRUCTURES AS SHOWN ARE BASED ON THE BEST INFORMATION AVAILABLE BUT NO GUARANTEE IS GIVEN THAT ALL EXISTING UTILITIES ARE SHOWN OR THAT THE GIVEN LOCATIONS ARE EXACT. CONFIRMATION OF EXISTENCE AND EXACT LOCATION OF ALL SERVICES MUST BE OBTAINED FROM THE INDIVIDUAL UTILITIES BEFORE PROCEEDING WITH CONSTRUCTION.

NO.	REVISIONS	DATE	BY
2	ISSUED FOR TENDER	20.03.20	RS
1	ISSUED FOR REVIEW	20.03.09	RS



DESIGNED BY	RS	CHECKED BY	RS
DRAWN BY	SC	APPROVED BY	RS
HOR. SCALE:	1:500	RELEASED FOR CONSTRUCTION:	
VERTICAL:		DATE	20.01.06



CONSULTANT DRAWING NO. C-142



2019 SEWER RENEWALS BY CIPP LINING  
CONTRACT 7  
**LUXTON AVENUE**  
3RD MH E OF MAIN ST TO  
4TH MH E OF MAIN ST

SHEET	OF
44	50
CAD FILE DRAWING NUMBER	
18920c-141-934.dwg	
CITY DRAWING NUMBER	
12435	

V:\1112\active\111218920\0300\_drawing\0302\_sheet\_files\02\_civil\18920c-141-934.dwg