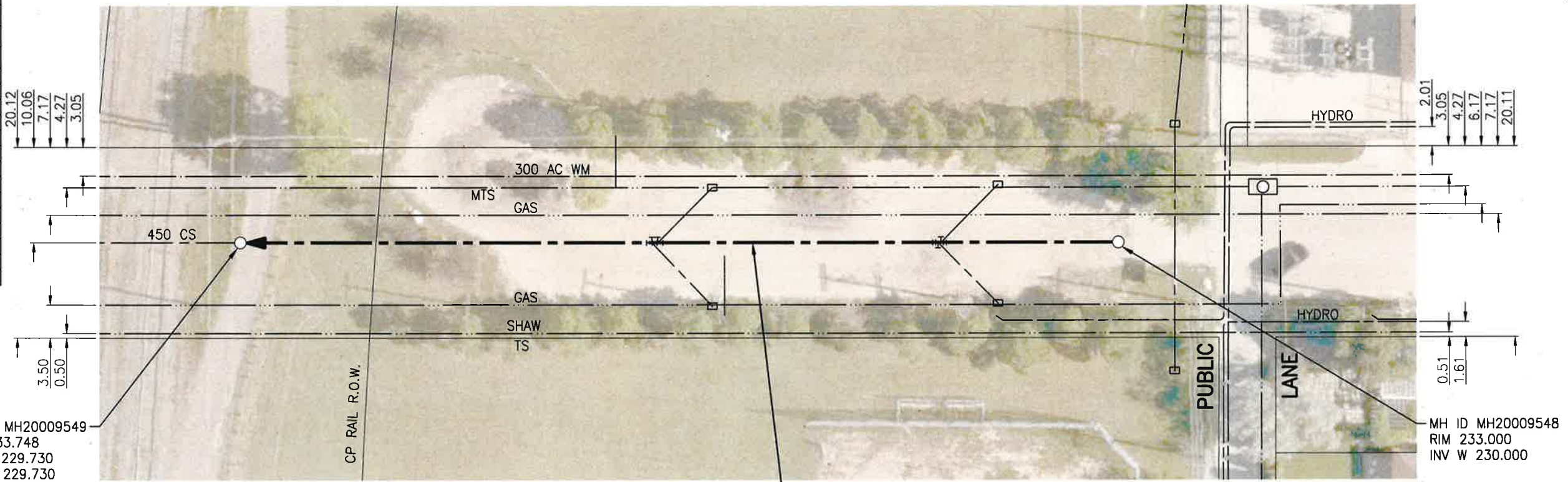




WELLINGTON AVENUE

SEWER JUNCTION INFORMATION FROM SEWER VIDEO INSPECTION

SEWER ID S-MA20010459		
DISTANCE FROM MH20009548		
DISTANCE	DIAMETER	CLOCK
7.7	200	2
8.5	150	10
18.9	150	2
19.8	150	10
26.7	150	2
27.7	150	10
44.4	150	2
45.3	150	10
50.2	150	2
51.1	150	10
63.6	150	2
64.4	150	10
78.0	150	2
78.8	150	10



MH ID MH20009549  
RIM 233.748  
INV E 229.730  
INV W 229.730

MH ID MH20009548  
RIM 233.000  
INV W 230.000

93.80 OF 450 VC SEWER TO BE LINED (SEWER ID S-MA20010459)

**WARNING**

IF POWER EQUIPMENT OR EXPLOSIVES ARE TO BE USED FOR EXCAVATION ON THIS PROJECT THE CONTRACTOR MUST:

- 1) NOTIFY THE GAS COMPANY OF THE PROPOSED LOCATION OF EXCAVATION.
- 2) TAKE PRECAUTION TO AVOID DAMAGE TO GAS COMPANY INSTALLATIONS.

SEE PROVINCIAL REGULATION 140/92 FOR DETAILS

**ENGINEERS GEOSCIENTISTS MANITOBA**  
Certificate of Authorization  
Stantec Consulting Ltd.  
No. 1301

**METRIC**  
WHOLE NUMBERS INDICATE MILLIMETRES  
DECIMALIZED NUMBERS INDICATE METRES

1:500

TENDER NO. 117-2020

LOCATION APPROVED UNDERGROUND STRUCTURES

SUPV. U/G STRUCTURES COMMITTEE DATE

NOTE:  
LOCATION OF UNDERGROUND STRUCTURES AS SHOWN ARE BASED ON THE BEST INFORMATION AVAILABLE BUT NO GUARANTEE IS GIVEN THAT ALL EXISTING UTILITIES ARE SHOWN OR THAT THE GIVEN LOCATIONS ARE EXACT. CONFIRMATION OF EXISTENCE AND EXACT LOCATION OF ALL SERVICES MUST BE OBTAINED FROM THE INDIVIDUAL UTILITIES BEFORE PROCEEDING WITH CONSTRUCTION.

NO.	REVISIONS	DATE	BY
2	ISSUED FOR TENDER	20.03.20	RS
1	ISSUED FOR REVIEW	20.03.09	RS

**Stantec**  
905 Waverley Street, Winnipeg, Manitoba  
Tel 204-489-5900 Fax 204-453-9012

DESIGNED BY	RS	CHECKED BY	RS
DRAWN BY	SC	APPROVED BY	RS
HOR. SCALE:	1:500	RELEASED FOR CONSTRUCTION:	<i>RS</i>
VERTICAL:		DATE	<i>MR 17/20</i>

ENGINEER'S SEAL  
PROVINCE OF MANITOBA  
REGISTERED PROFESSIONAL ENGINEER  
*R.M. SHERLOCK*  
MEMBER 24045  
CONSULTANT DRAWING NO. C-125

**THE CITY OF WINNIPEG**  
WATER AND WASTE DEPARTMENT

2019 SEWER RENEWALS BY CIPP LINING  
CONTRACT 7  
**WELLINGTON AVENUE**  
1ST MH W OF STRATHCONA ST TO  
2ND MH W OF STRATHCONA ST

SHEET	OF
27	50
CAD FILE DRAWING NUMBER 18920c-121-934.dwg	
CITY DRAWING NUMBER 12418	

V:\112\active\111218920\0300\_drawing\0302\_sheet\_files\02\_civil\18920c-121-934.dwg