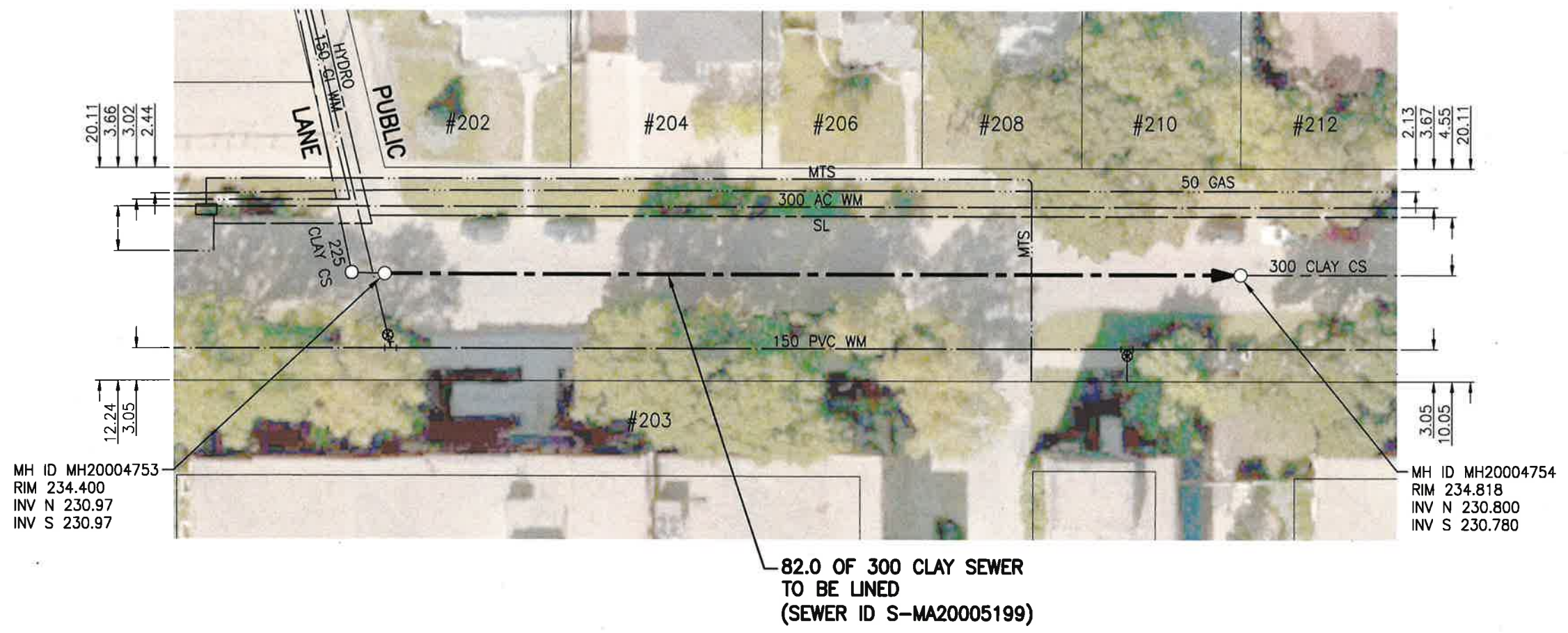




SEWER JUNCTION INFORMATION FROM SEWER VIDEO INSPECTION

SEWER ID S-MA20005199		
DISTANCE FROM MH20004754		
DISTANCE	DIAMETER	CLOCK
20.4	150	10
21.1	150	2
36.2	150	10
36.8	150	2
49.7	150	12
51.0	150	10
51.7	150	2
61.8	150	3
66.1	150	10
66.8	150	2
79.3	150	10
80.0	150	2



82.0 OF 300 CLAY SEWER TO BE LINED (SEWER ID S-MA20005199)

WARNING

IF POWER EQUIPMENT OR EXPLOSIVES ARE TO BE USED FOR EXCAVATION ON THIS PROJECT THE CONTRACTOR MUST:

- 1) NOTIFY THE GAS COMPANY OF THE PROPOSED LOCATION OF EXCAVATION.
 - 2) TAKE PRECAUTION TO AVOID DAMAGE TO GAS COMPANY INSTALLATIONS.
- SEE PROVINCIAL REGULATION 140/92 FOR DETAILS

EG ENGINEERS GEOSCIENTISTS MANITOBA
 Certificate of Authorization
 Stantec Consulting Ltd.
 No. 1301

METRIC
 WHOLE NUMBERS INDICATE MILLIMETRES
 DECIMALIZED NUMBERS INDICATE METRES

1:500

TENDER NO. 117-2020

LOCATION APPROVED UNDERGROUND STRUCTURES

SUPV. U/G STRUCTURES COMMITTEE DATE

NOTE:
 LOCATION OF UNDERGROUND STRUCTURES AS SHOWN ARE BASED ON THE BEST INFORMATION AVAILABLE BUT NO GUARANTEE IS GIVEN THAT ALL EXISTING UTILITIES ARE SHOWN OR THAT THE GIVEN LOCATIONS ARE EXACT. CONFIRMATION OF EXISTENCE AND EXACT LOCATION OF ALL SERVICES MUST BE OBTAINED FROM THE INDIVIDUAL UTILITIES BEFORE PROCEEDING WITH CONSTRUCTION.

NO.	REVISIONS	DATE	BY
2	ISSUED FOR TENDER	20.03.20	RS
1	ISSUED FOR REVIEW	20.03.09	RS

Stantec
 905 Waverley Street, Winnipeg, Manitoba
 Tel 204-489-5900 Fax 204-453-9012

DESIGNED BY	RS	CHECKED BY	RS
DRAWN BY	SC	APPROVED BY	RS
HOR. SCALE:	1:500	RELEASED FOR CONSTRUCTION:	
VERTICAL:		DATE	
DATE	20.01.06	DATE	

ENGINEER'S SEAL

CONSULTANT DRAWING NO. C-118

THE CITY OF WINNIPEG
 WATER AND WASTE DEPARTMENT

2019 SEWER RENEWALS BY CIPP LINING
 CONTRACT 7
DUFFIELD STREET
 2ND MH S OF LODGE AVE TO
 1ST MH S OF LODGE AVE

SHEET	OF
20	50
CAD FILE DRAWING NUMBER	
18920c-111-934.dwg	
CITY DRAWING NUMBER	
12411	

V:\1112\active\111218920\0300_drawing\0302_sheet_files\02_civil\18920c-111-934.dwg