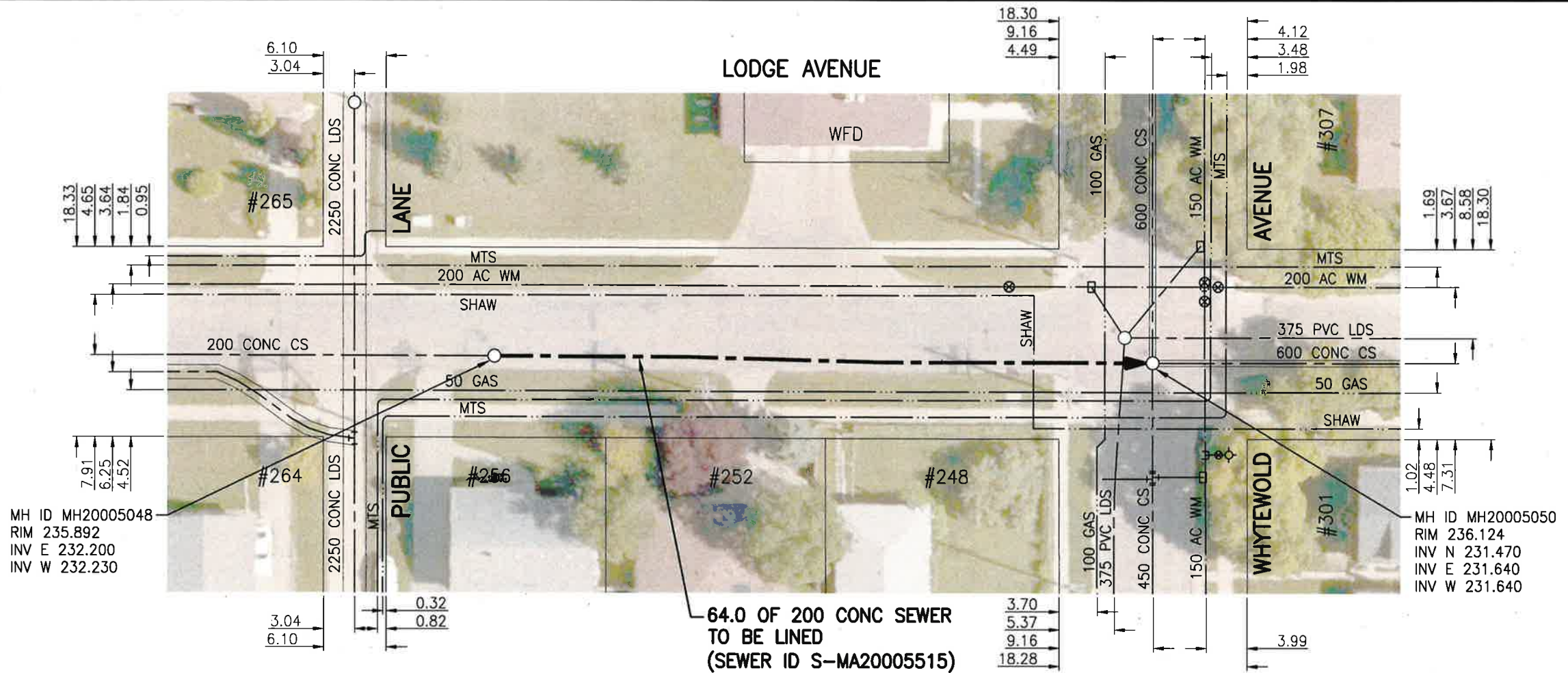


SEWER JUNCTION INFORMATION FROM SEWER VIDEO INSPECTION

SEWER ID S-MA20005515		
DISTANCE FROM MH20005050		
DISTANCE	DIAMETER	CLOCK
2.0	150	12
18.2	150	2
38.3	150	3



MH ID MH20005048
RIM 235.892
INV E 232.200
INV W 232.230

MH ID MH20005050
RIM 236.124
INV N 231.470
INV E 231.640
INV W 231.640

64.0 OF 200 CONC SEWER TO BE LINED (SEWER ID S-MA20005515)

WARNING

IF POWER EQUIPMENT OR EXPLOSIVES ARE TO BE USED FOR EXCAVATION ON THIS PROJECT THE CONTRACTOR MUST:

- 1) NOTIFY THE GAS COMPANY OF THE PROPOSED LOCATION OF EXCAVATION.
 - 2) TAKE PRECAUTION TO AVOID DAMAGE TO GAS COMPANY INSTALLATIONS.
- SEE PROVINCIAL REGULATION 140/92 FOR DETAILS



Certificate of Authorization
Stantec Consulting Ltd.
No. 1301

METRIC

WHOLE NUMBERS INDICATE MILLIMETRES
DECIMALIZED NUMBERS INDICATE METRES



TENDER NO. 117-2020

LOCATION APPROVED UNDERGROUND STRUCTURES

SUPV. U/G STRUCTURES COMMITTEE DATE

NOTE:
LOCATION OF UNDERGROUND STRUCTURES AS SHOWN ARE BASED ON THE BEST INFORMATION AVAILABLE BUT NO GUARANTEE IS GIVEN THAT ALL EXISTING UTILITIES ARE SHOWN OR THAT THE GIVEN LOCATIONS ARE EXACT. CONFIRMATION OF EXISTENCE AND EXACT LOCATION OF ALL SERVICES MUST BE OBTAINED FROM THE INDIVIDUAL UTILITIES BEFORE PROCEEDING WITH CONSTRUCTION.

NO.	REVISIONS	DATE	BY
2	ISSUED FOR TENDER	20.03.20	RS
1	ISSUED FOR REVIEW	20.03.09	RS



DESIGNED BY	RS	CHECKED BY	RS
DRAWN BY	SC	APPROVED BY	RS
HOR. SCALE:	1:500	RELEASED FOR CONSTRUCTION:	
VERTICAL:		DATE	20.01.06



CONSULTANT DRAWING NO. C-113



2019 SEWER RENEWALS BY CIPP LINING
CONTRACT 7
LODGE AVENUE
1ST MH E OF OLIVE ST TO
MH AT WHYTEWOLD AVE

SHEET	OF
15	50
CAD FILE DRAWING NUMBER 18920c-III-934.dwg	
CITY DRAWING NUMBER 12406	

V:\1112\active\111218920\0300_drawing\0302_sheet_files\02_civil\18920c-111-934.dwg