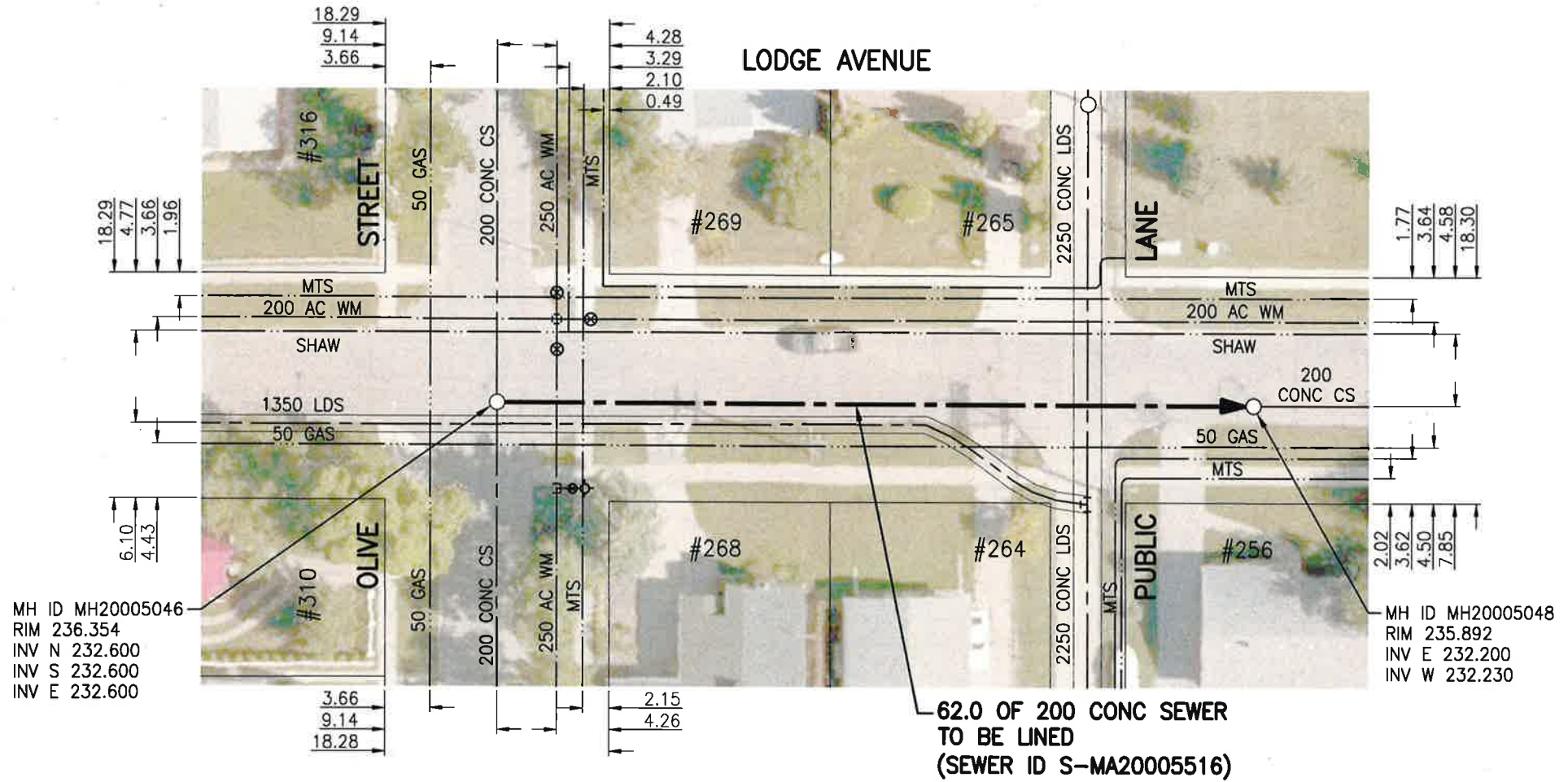




SEWER JUNCTION INFORMATION FROM SEWER VIDEO INSPECTION		
SEWER ID S-MA20005516		
DISTANCE FROM MH20005046		
DISTANCE	DIAMETER	CLOCK
26.8	150	10
33.0	150	1
34.6	150	11
35.2	150	10
37.5	150	2



WARNING

IF POWER EQUIPMENT OR EXPLOSIVES ARE TO BE USED FOR EXCAVATION ON THIS PROJECT THE CONTRACTOR MUST:

- 1) NOTIFY THE GAS COMPANY OF THE PROPOSED LOCATION OF EXCAVATION.
- 2) TAKE PRECAUTION TO AVOID DAMAGE TO GAS COMPANY INSTALLATIONS.

SEE PROVINCIAL REGULATION 140/92 FOR DETAILS

**ENGINEERS
GEOSCIENTISTS
MANITOBA**
Certificate of Authorization
Stantec Consulting Ltd.
No. 1301

METRIC
WHOLE NUMBERS INDICATE MILLIMETRES
DECIMALIZED NUMBERS INDICATE METRES

1:500

TENDER NO. 117-2020

LOCATION APPROVED UNDERGROUND STRUCTURES

SUPV. U/G STRUCTURES COMMITTEE DATE

NOTE:
LOCATION OF UNDERGROUND STRUCTURES AS SHOWN ARE BASED ON THE BEST INFORMATION AVAILABLE BUT NO GUARANTEE IS GIVEN THAT ALL EXISTING UTILITIES ARE SHOWN OR THAT THE GIVEN LOCATIONS ARE EXACT. CONFIRMATION OF EXISTENCE AND EXACT LOCATION OF ALL SERVICES MUST BE OBTAINED FROM THE INDIVIDUAL UTILITIES BEFORE PROCEEDING WITH CONSTRUCTION.

B.M.	ELEV.	NO.	REVISIONS	DATE	BY
		2	ISSUED FOR TENDER	20.03.20	RS
		1	ISSUED FOR REVIEW	20.03.09	RS

Stantec
905 Waverley Street, Winnipeg, Manitoba
Tel 204-489-5900 Fax 204-453-9012

DESIGNED BY	RS	CHECKED BY	RS
DRAWN BY	SC	APPROVED BY	RS
HOR. SCALE:	1:500	RELEASED FOR CONSTRUCTION:	
VERTICAL:		DATE	Mar 17/20
DATE	20.01.06	CONSULTANT DRAWING NO.	C-112

ENGINEER'S SEAL
PROVINCE OF MANITOBA
REGISTERED PROFESSIONAL ENGINEER
R.M. SHERLOCK
MEMBER 24045

THE CITY OF WINNIPEG
WATER AND WASTE DEPARTMENT

2019 SEWER RENEWALS BY CIPP LINING
CONTRACT 7
LODGE AVENUE
MH AT OLIVE ST TO
1ST MH E OF OLIVE ST

SHEET	OF
14	50
CAD FILE DRAWING NUMBER	
18920c-III-934.dwg	
CITY DRAWING NUMBER	
12405	

V:\112\active\11218920\0300_drawing\0302_sheet_files\02_civil\18920c-111-934.dwg