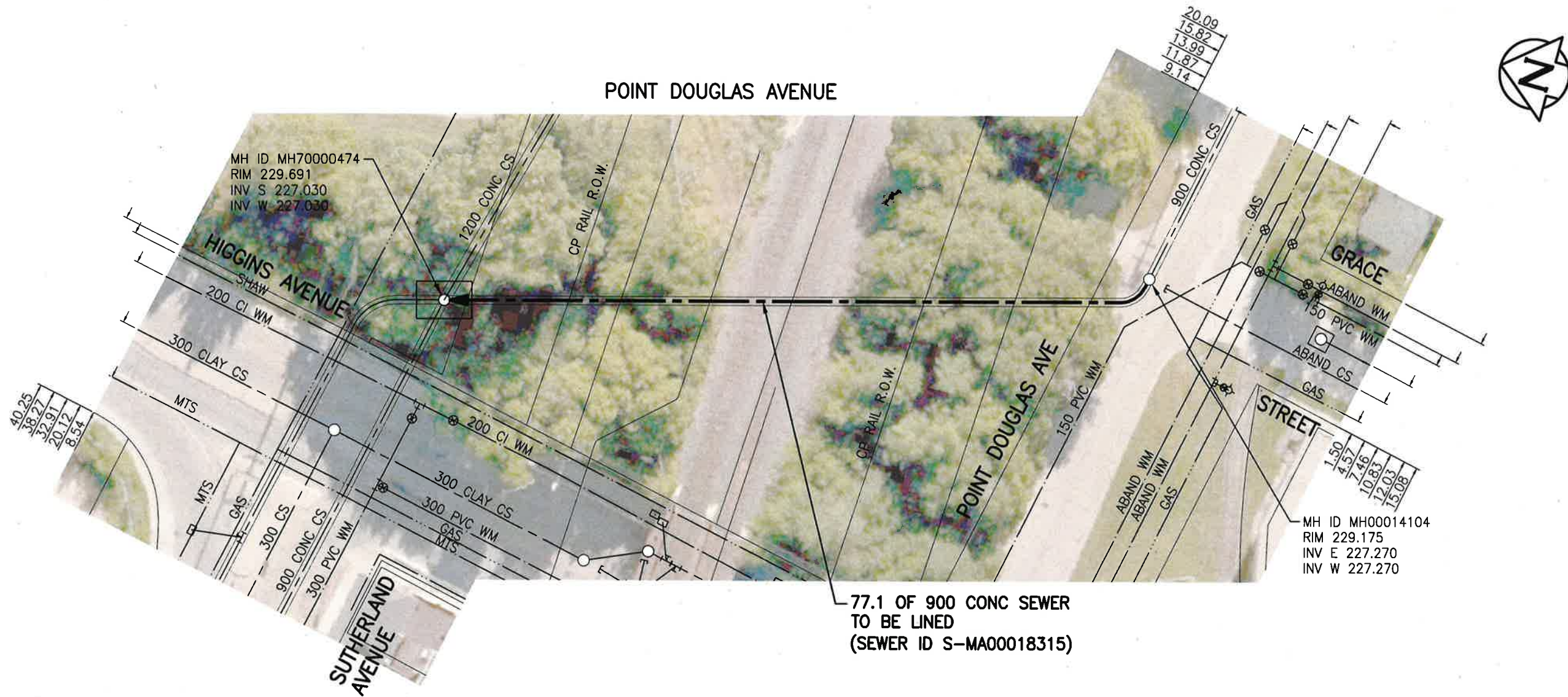


V:\1112\active\11218930\0300\_drawing\0302\_sheet\_files\02\_civil\18930c-101-934.dwg



77.1 OF 900 CONC SEWER TO BE LINED (SEWER ID S-MA00018315)

### WARNING

IF POWER EQUIPMENT OR EXPLOSIVES ARE TO BE USED FOR EXCAVATION ON THIS PROJECT THE CONTRACTOR MUST:

- 1) NOTIFY THE GAS COMPANY OF THE PROPOSED LOCATION OF EXCAVATION.
- 2) TAKE PRECAUTION TO AVOID DAMAGE TO GAS COMPANY INSTALLATIONS.

SEE PROVINCIAL REGULATION 140/92 FOR DETAILS

**ENGINEERS GEOSCIENTISTS MANITOBA**  
 Certificate of Authorization  
 Stantec Consulting Ltd.  
 No. 1301

**METRIC**  
 WHOLE NUMBERS INDICATE MILLIMETRES  
 DECIMALIZED NUMBERS INDICATE METRES

TENDER NO. 116-2020

#### LOCATION APPROVED UNDERGROUND STRUCTURES

SUPV. U/G STRUCTURES COMMITTEE DATE

**NOTE:**  
 LOCATION OF UNDERGROUND STRUCTURES AS SHOWN ARE BASED ON THE BEST INFORMATION AVAILABLE BUT NO GUARANTEE IS GIVEN THAT ALL EXISTING UTILITIES ARE SHOWN OR THAT THE GIVEN LOCATIONS ARE EXACT. CONFIRMATION OF EXISTENCE AND EXACT LOCATION OF ALL SERVICES MUST BE OBTAINED FROM THE INDIVIDUAL UTILITIES BEFORE PROCEEDING WITH CONSTRUCTION.

NO.	REVISIONS	DATE	BY
2	ISSUED FOR TENDER	20.03.20	RS
1	ISSUED FOR REVIEW	20.03.09	RS

**Stantec**  
 905 Waverley Street, Winnipeg, Manitoba  
 Tel 204-489-5900 Fax 204-453-9012

DESIGNED BY	RS	CHECKED BY	RS
DRAWN BY	SC	APPROVED BY	RS
HOR. SCALE:	1:500	RELEASED FOR CONSTRUCTION	
VERTICAL:		DATE	MAR 17/20

ENGINEER'S SEAL  
  
 CONSULTANT DRAWING NO. C-109

**THE CITY OF WINNIPEG**  
 WATER AND WASTE DEPARTMENT

2019 SEWER RENEWALS BY CIPP LINING  
 CONTRACT 4  
**POINT DOUGLAS AVENUE**  
 MH AT SUTHERLAND AVE TO  
 MH AT GRACE STREET

SHEET	OF
11	12
CAD FILE DRAWING NUMBER 18930c-101-934.dwg	
CITY DRAWING NUMBER 12390	