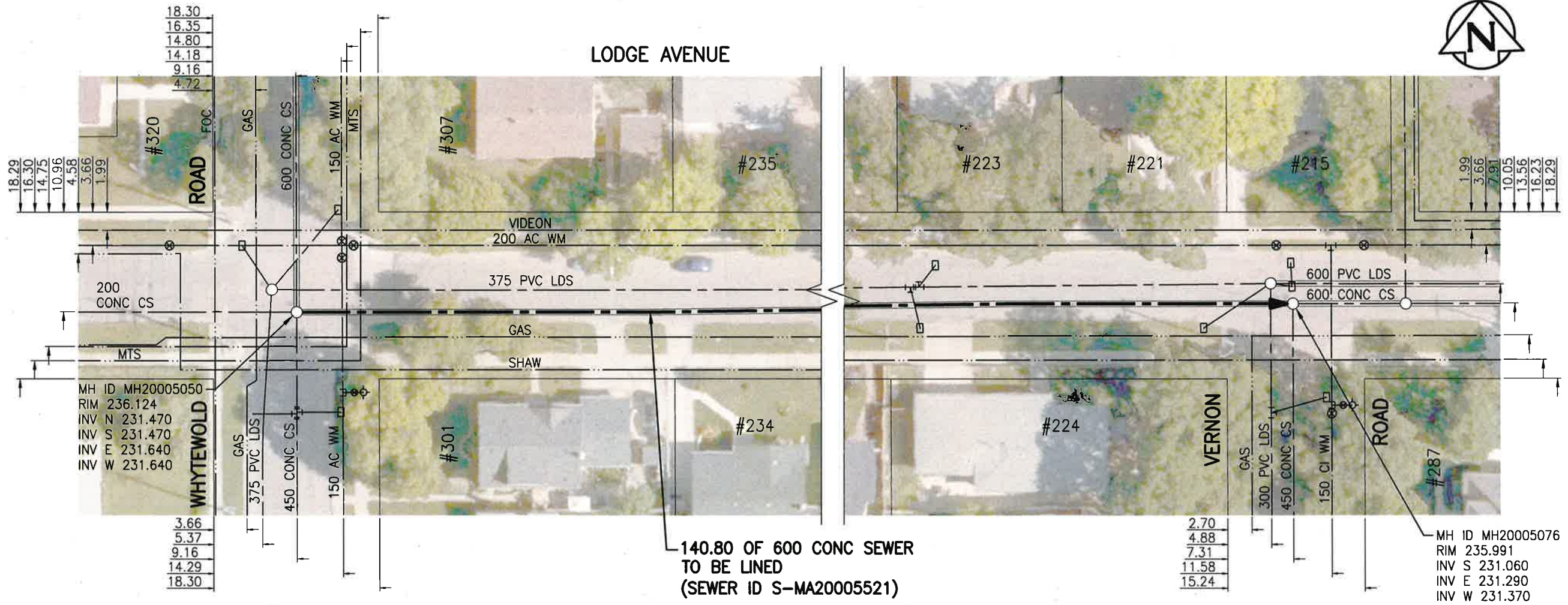




SEWER JUNCTION INFORMATION FROM SEWER VIDEO INSPECTION		
SEWER ID S-MA20005521		
DISTANCE FROM MH20005050		
DISTANCE	DIAMETER	CLOCK
23.9	150	10
47.8	150	10
53.2	150	2
62.9	150	10
69.4	150	12
81.7	150	10
87.2	150	2
100.7	150	11
100.7	150	1
103.2	150	10
120.0	150	2
121.0	150	10
130.6	150	2



140.80 OF 600 CONC SEWER TO BE LINED (SEWER ID S-MA20005521)

WARNING

IF POWER EQUIPMENT OR EXPLOSIVES ARE TO BE USED FOR EXCAVATION ON THIS PROJECT THE CONTRACTOR MUST:

- 1) NOTIFY THE GAS COMPANY OF THE PROPOSED LOCATION OF EXCAVATION.
 - 2) TAKE PRECAUTION TO AVOID DAMAGE TO GAS COMPANY INSTALLATIONS.
- SEE PROVINCIAL REGULATION 140/92 FOR DETAILS

ENGINEERS GEOSCIENTISTS MANITOBA
 Certificate of Authorization
 Stantec Consulting Ltd.
 No. 1301

METRIC
 WHOLE NUMBERS INDICATE MILLIMETRES
 DECIMALIZED NUMBERS INDICATE METRES

1:500

TENDER NO. 116-2020

LOCATION APPROVED UNDERGROUND STRUCTURES

SUPV. U/G STRUCTURES COMMITTEE	DATE

NOTE:
 LOCATION OF UNDERGROUND STRUCTURES AS SHOWN ARE BASED ON THE BEST INFORMATION AVAILABLE BUT NO GUARANTEE IS GIVEN THAT ALL EXISTING UTILITIES ARE SHOWN OR THAT THE GIVEN LOCATIONS ARE EXACT. CONFIRMATION OF EXISTENCE AND EXACT LOCATION OF ALL SERVICES MUST BE OBTAINED FROM THE INDIVIDUAL UTILITIES BEFORE PROCEEDING WITH CONSTRUCTION.

NO.	REVISIONS	DATE	BY
2	ISSUED FOR TENDER	20.03.20	RS
1	ISSUED FOR REVIEW	20.03.09	RS

Stantec
 905 Waverley Street, Winnipeg, Manitoba
 Tel 204-489-5900 Fax 204-453-9012

DESIGNED BY	RS	CHECKED BY	RS
DRAWN BY	SC	APPROVED BY	RS
HOR. SCALE:	1:500	RELEASED FOR CONSTRUCTION:	
VERTICAL:		DATE	20.01.06

ENGINEER'S SEAL

CONSULTANT DRAWING NO. C-101

THE CITY OF WINNIPEG
 WATER AND WASTE DEPARTMENT

2019 SEWER RENEWALS BY CIPP LINING
 CONTRACT 4
LODGE AVENUE
 MH AT WHYTEWOLD RD TO
 MH AT VERNON RD

SHEET	OF
03	12
CAD FILE DRAWING NUMBER	
18930c-101-934.dwg	
CITY DRAWING NUMBER	
12382	

V:\1112\active\111218930\0300_drawing\0302_sheet_files\02_civil\18930c-101-934.dwg