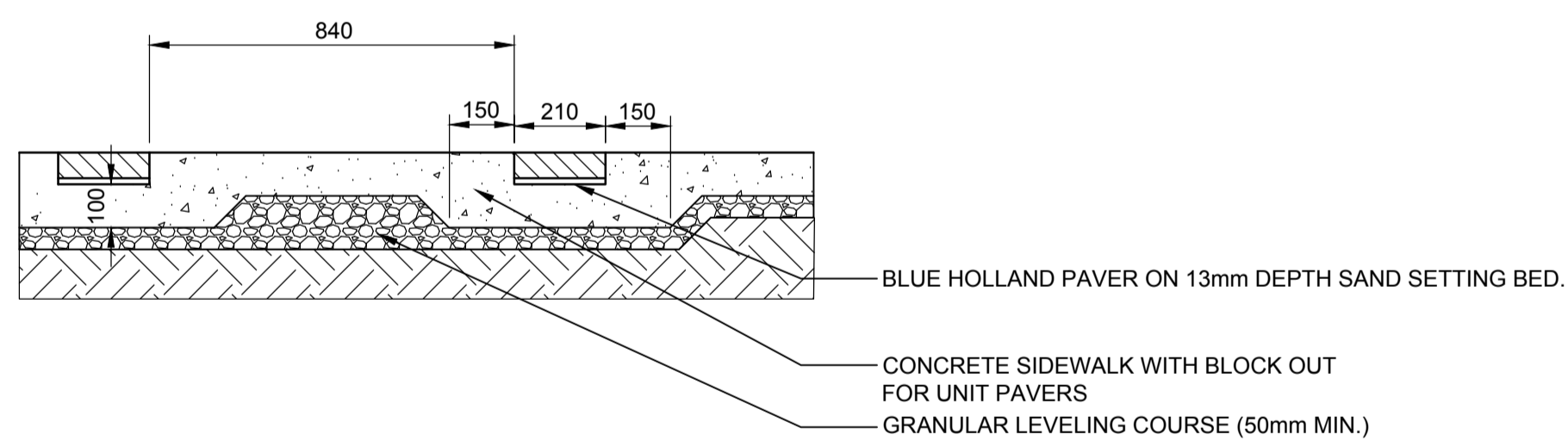
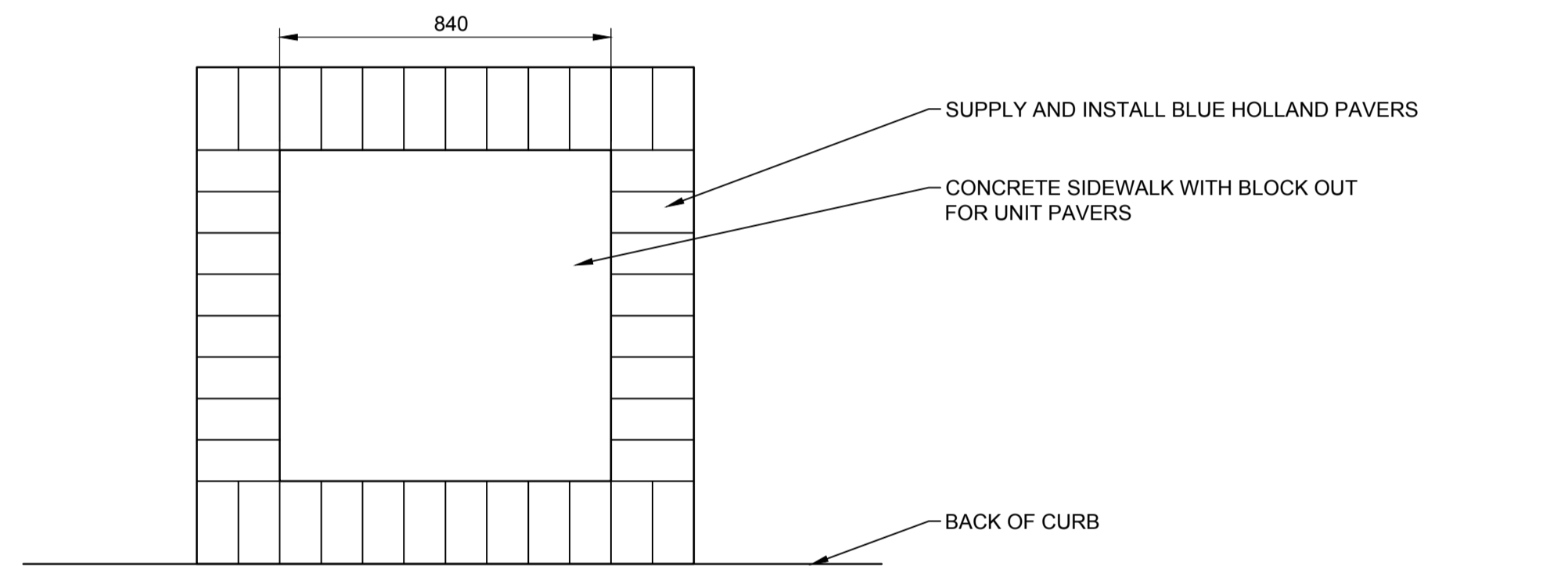
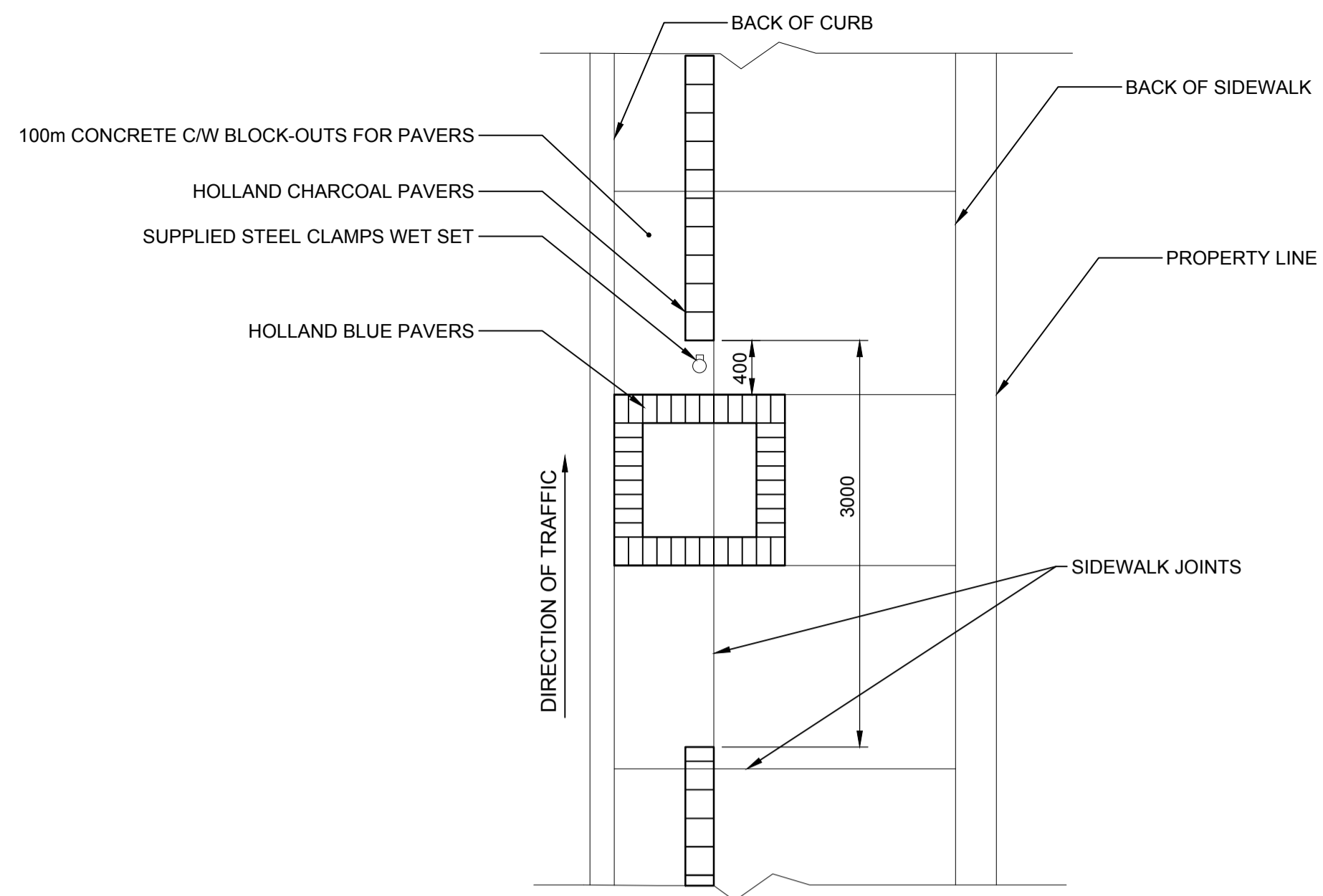


- NOTES:**
1. A 3.0m GAP IS REQUIRED AT ALL TRANSIT STOP HEADS
  2. CONCRETE PLACED BELOW PAVERS FOR BLOCKOUTS TO BE FINISHED REASONABLY SMOOTH.
  3. PAVING BAND TO STOP 100mm SHORT OF ALL REQUIRED ISOLATIONS AND AT BACK OF CURB LINES

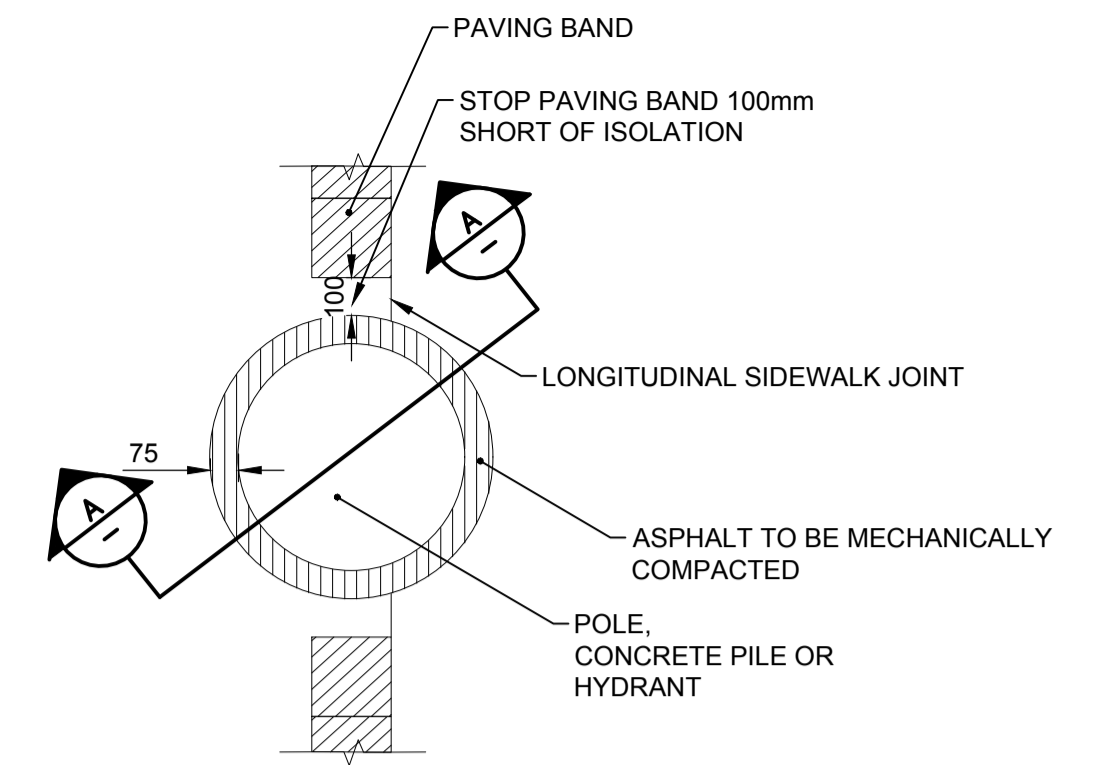
**1** SIDEWALK PAVING BAND – ROBLIN AVENUE  
1:20



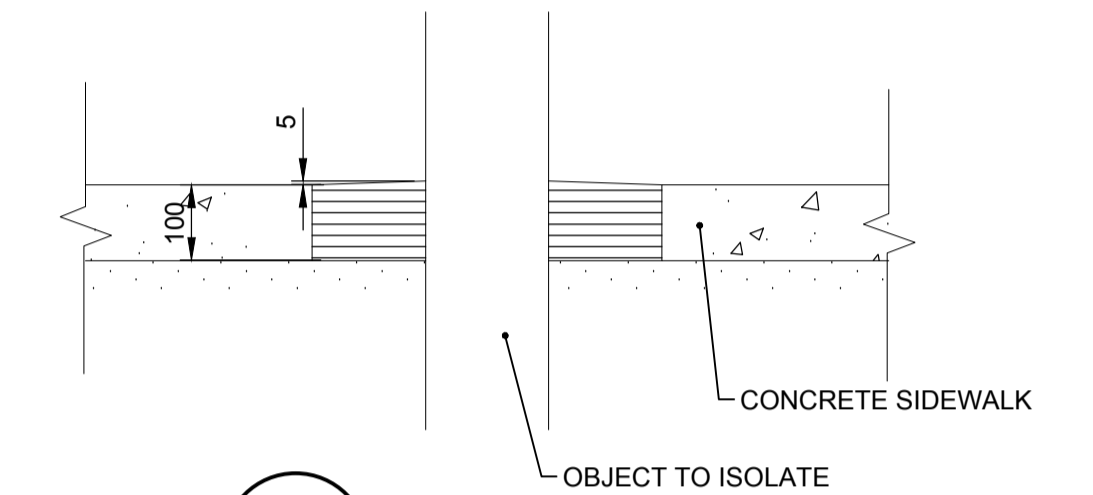
**3** BUS STOP UNIT PAVER INSERT  
1:15



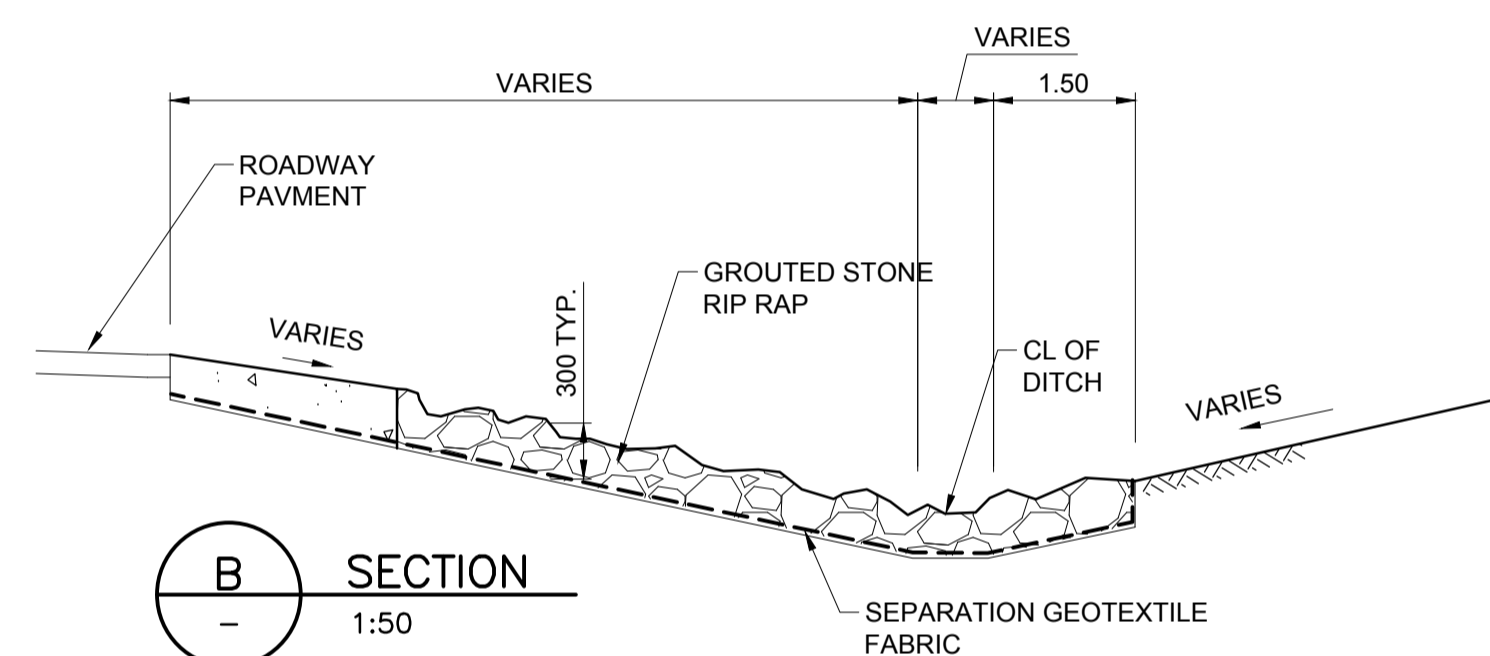
**2** TYPICAL TRANSIT STOP AND PAVER DETAIL  
1:40



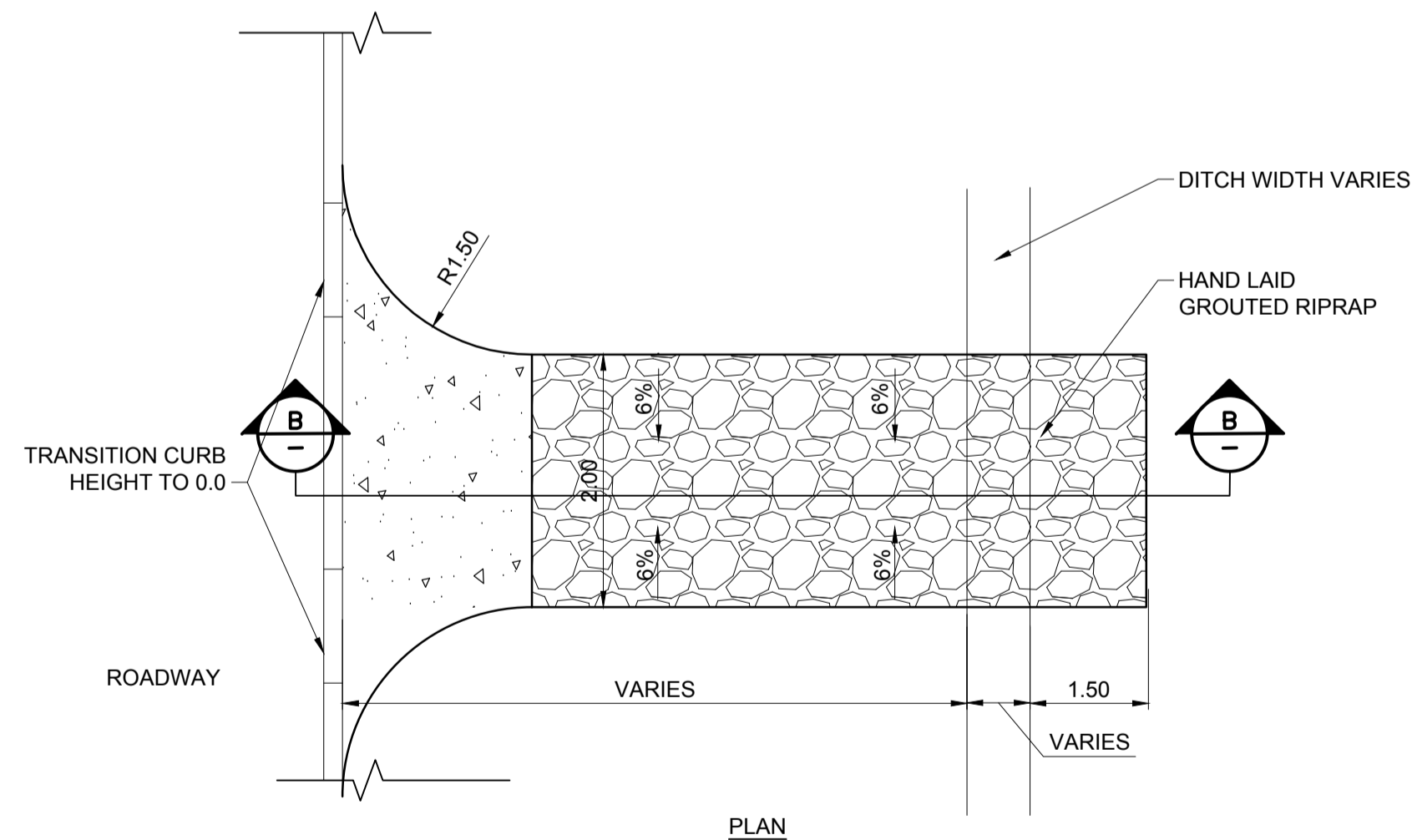
**4** TYPICAL SIDEWALK ISOLATIONS  
1:20



**A** SECTION  
1:10



**B** SECTION  
1:50



**5** GROUTED STONE RIPRAP  
1:50

**ENGINEERS  
GEOSCIENTISTS  
MANITOBA**  
Certificate of Authorization  
Stantec Consulting Ltd.  
No. 1301

V:\1137\cshwa\1137080\0300\_drawing\0302\_sheel\_files\02\_civil\0808c-501-xxx.dwg  
 2020/05/21 12:58 PM by: cshwa

EXISTING	LEGEND-PLAN	PROPOSED	EXISTING	LEGEND-PLAN	PROPOSED	EXISTING	LEGEND-PROFILE	PROPOSED
150 WM	WATERMAIN	150 WM	---	---	---	---	---	---
HYDRANT	HYDRANT	+	---	---	---	---	---	---
VALVE	VALVE	+	---	---	---	---	---	---
300 LDS	LAND DRAINAGE SEWER	300 LDS	---	---	---	---	---	---
250 WWS	WASTE WATER SEWER	250 WWS	---	---	---	---	---	---
MANHOLE	MANHOLE	○	---	---	---	---	---	---
CATCH BASIN	CATCH BASIN	■	---	---	---	---	---	---
CURB INLET/CATCH PIT	CURB INLET/CATCH PIT	▽	---	---	---	---	---	---
TRANSIT STOP	TRANSIT STOP	□	(31.334)	---	---	---	---	---
CULVERT	CULVERT	▬	---	---	---	---	---	---
GAS	GAS	---	---	---	---	---	---	---
---	HYDRO	---	---	---	---	---	---	---
---	M.T.S.	---	---	---	---	---	---	---
---	CONCRETE	---	---	---	---	---	---	---
---	ASPHALT	---	---	---	---	---	---	---
---	SIDEWALK	---	---	---	---	---	---	---
---	PROPERTY LINE	---	---	---	---	---	---	---
---	SURVEY BAR	---	---	---	---	---	---	---
---	DITCH	---	---	---	---	---	---	---
---	ELEVATION	---	(32.231)	---	---	---	---	---
---	SIDEWALK RAMP	---	---	---	---	---	---	---

**LOCATION APPROVED UNDERGROUND STRUCTURES**

SUPV. U/G STRUCTURES COMMITTEE DATE

**NOTE:**  
LOCATION OF UNDERGROUND STRUCTURES AS SHOWN ARE BASED ON THE BEST INFORMATION AVAILABLE BUT NO GUARANTEE IS GIVEN THAT ALL EXISTING UTILITIES ARE SHOWN OR THAT THE GIVEN LOCATIONS ARE EXACT. CONFIRMATION OF EXISTENCE AND EXACT LOCATION OF ALL SERVICES MUST BE OBTAINED FROM THE INDIVIDUAL UTILITIES BEFORE PROCEEDING WITH CONSTRUCTION.

NO.	REVISIONS	DATE	BY
0	ISSUED FOR TENDER	20.04.03	R.K.H.

**Stantec**  
300 - 311 Portage Avenue, Winnipeg MB Canada  
www.stantec.com

DESIGNED BY: T.G.	CHECKED BY: S.R.S.
DRAWN BY: V.K.	APPROVED BY: R.K.H.
HOR. SCALE: 1:500	RELEASED FOR CONSTRUCTION: DATE
VERTICAL: DATE	

ENGINEER'S SEAL

**PRELIMINARY DRAWING**

NOT TO BE USED FOR CONSTRUCTION

CONSULTANT DRAWING NO. C-501

**THE CITY OF WINNIPEG**  
PUBLIC WORKS DEPARTMENT  
ENGINEERING DIVISION

ROBLIN BOULEVARD PAVEMENT RENEWAL  
ROBLIN BOULEVARD

MISCELLANEOUS SECTIONS & DETAILS

SHEET 32 OF 50  
CAD FILE DRAWING NUMBER 08080c-501-xxx.dwg  
CITY DRAWING NUMBER P-3528-32