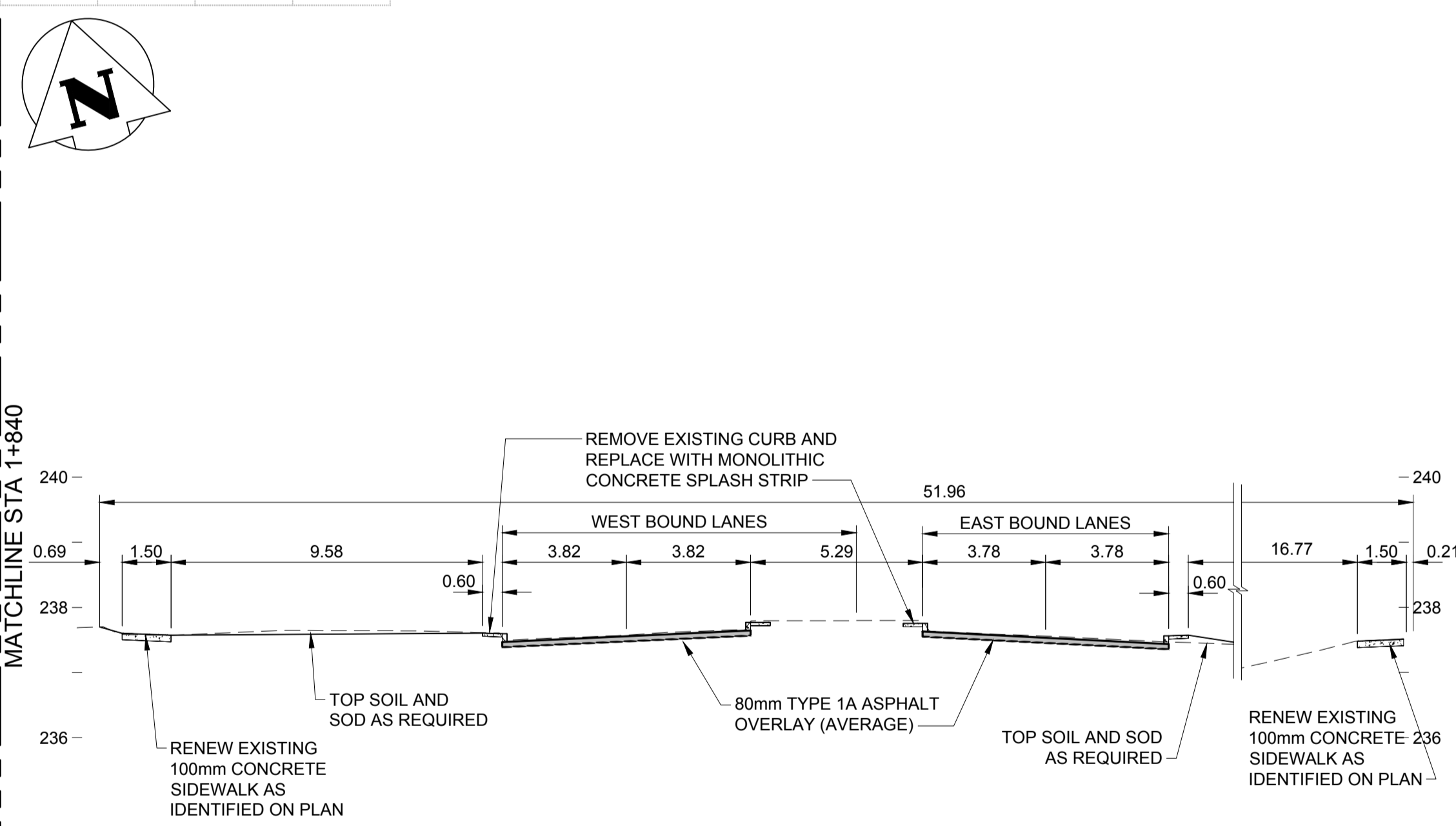
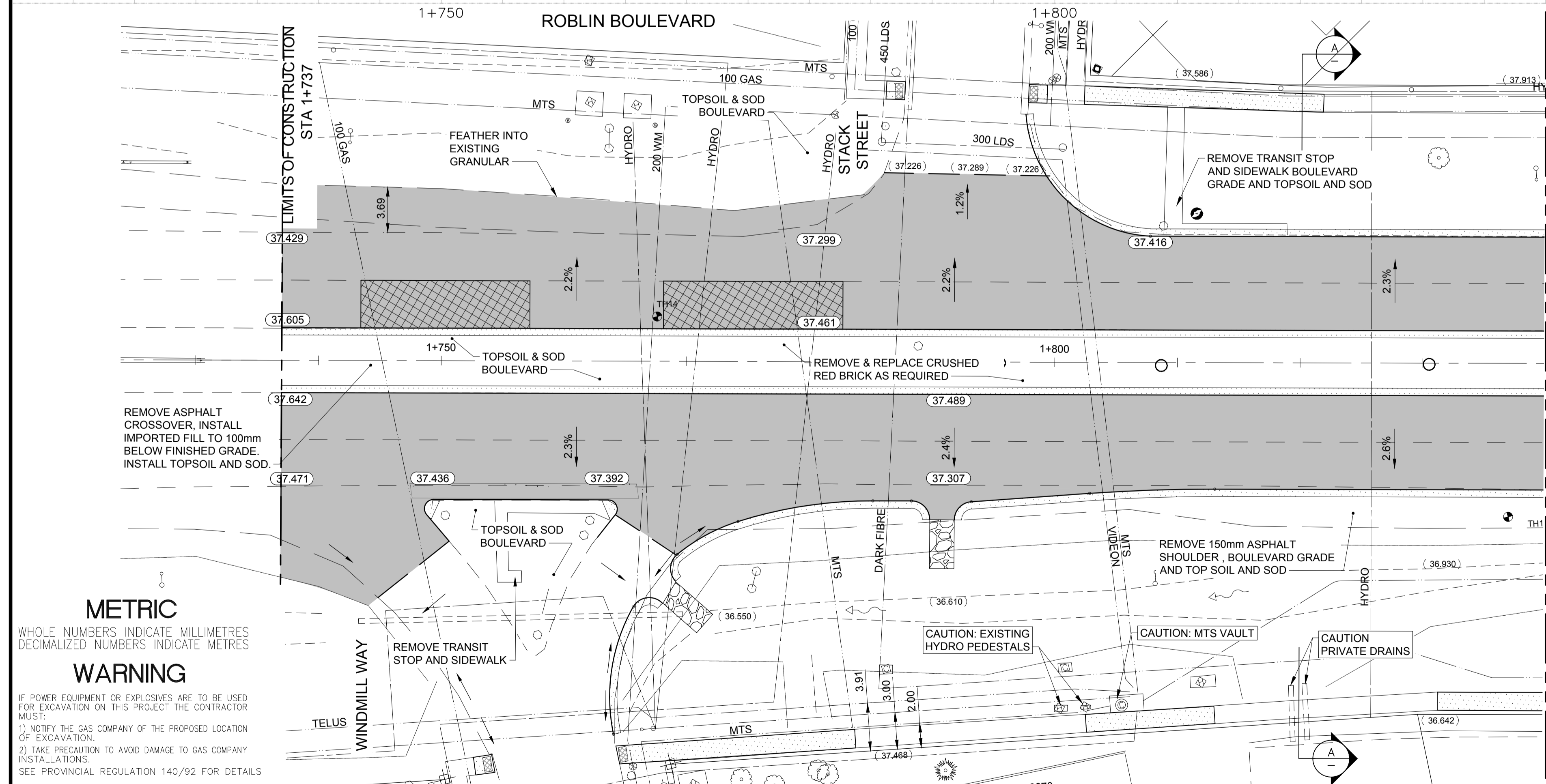


NOTES:

- MILL ALL ASPHALT TO CONCRETE SURFACE.
- THE CONTRACT ADMINISTRATOR TO MARK OUT ALL MILLING, PAVEMENT, CURB AND SIDEWALK TIE-IN LOCATIONS.
- ALL MAINLINE CURBING TO BE RENEWED AS BARRIER CURB OR MONOLITHIC CONCRETE SPLASH STRIP (AS IDENTIFIED ON PLAN). CURB REVEAL TO BE 125mm UNLESS OTHERWISE NOTED.
- ADJUST ALL WATER VALVES, MANHOLES, AND CATCH BASINS TO GRADE.
- ADJUST ALL WATER SERVICE VALVES TO GRADE. EXISTING SERVICE VALVES ARE NOT SHOWN BUT ARE WITHIN THE SIDEWALK RENEWAL AREA.
- THE CONTRACTOR IS RESPONSIBLE FOR ALL UTILITY LOCATES.
- THE CONTRACTOR IS TO PROTECT ANY GEOMATIC MONUMENTS WITHIN THE PROJECT LIMITS. IF MONUMENTS CANNOT BE AVOIDED, THE CONTRACTOR IS RESPONSIBLE FOR NOTIFYING THE CITY OF WINNIPEG GEOMATICS AND LAND INFORMATION SERVICES BRANCH PRIOR TO ANY REMOVAL OR ADJUSTMENT TO THE PROPERTY BAR.
- MATCH EXISTING RADII ON PRIVATE APPROACHES.
- SIDEWALK WITH SEPARATE SPLASH STRIP AS SHOWN OR WHERE MINIMUM GRASSED BOULEVARD IS GREATER THAN 1.0m WIDE.
- SIDEWALK COMPLETE WITH PAVING BANDS AS SHOWN OR WHERE BOULEVARD IS LESS THAN 1.0m WIDE.
- AVERAGE ASPHALT THICKNESS TO BE 80mm.
- GRADE BREAKS WITHIN PRIVATE APPROACHES TO BE DIRECTED BY THE CONTRACT ADMINISTRATOR TO ACCOMPLISH 2-4% ACROSS THE SIDEWALK.
- PRIVATE APPROACH CONSTRUCTION TO BE 200mm EXPOSED REINFORCED CONCRETE WITH 75mm BASE COURSE, 225mm-50mm SUB-BASE AND NON-WOVEN GEOTEXTILE.
- RENEW PRIVATE APPROACHES TO MATCH EXISTING SURFACE.



METRIC WARNING
 WHOLE NUMBERS INDICATE MILLIMETRES
 DECIMALIZED NUMBERS INDICATE METRES
 IF POWER EQUIPMENT OR EXPLOSIVES ARE TO BE USED FOR EXCAVATION ON THIS PROJECT THE CONTRACTOR MUST:
 1) NOTIFY THE GAS COMPANY OF THE PROPOSED LOCATION OF EXCAVATION.
 2) TAKE PRECAUTION TO AVOID DAMAGE TO GAS COMPANY INSTALLATIONS.
 SEE PROVINCIAL REGULATION 140/92 FOR DETAILS

EXISTING	LEGEND-PLAN	PROPOSED	EXISTING	LEGEND-PLAN	PROPOSED
150 WM	WATERMAIN	150 WM	GLAS GRID	M.T.S.	PROFILE
300 LDS	LAND DRAINAGE SEWER	300 LDS	CONCRETE	NORTH OR WEST GUTTER	NORTH OR WEST GUTTER
250 WWS	WASTE WATER SEWER	250 WWS	ASPHALT	SOUTH OR EAST GUTTER	SOUTH OR EAST GUTTER
MANHOLE	MANHOLE	MANHOLE	SIDEWALK	NORTH MEDIAN GUTTER	NORTH MEDIAN GUTTER
CATCH BASIN	CATCH BASIN	CATCH BASIN	ASPHALT MILL & FILL	SOUTH MEDIAN GUTTER	SOUTH MEDIAN GUTTER
HYDRO	HYDRO	HYDRO	STREET LIGHT	NORTH OR WEST P.L.	NORTH OR WEST P.L.
GAS	GAS	GAS	HYDRO POLE	SOUTH OR EAST P.L.	SOUTH OR EAST P.L.
TRANSIT STOP	TRANSIT STOP	TRANSIT STOP	SURVEY BAR		
PROPERTY LINE	PROPERTY LINE	PROPERTY LINE	ELEVATION		
			SIDEWALK RAMP		

300 LDS	LAND DRAINAGE SEWER	300 LDS	GLAS GRID	M.T.S.	PROFILE
250 WWS	WASTE WATER SEWER	250 WWS	CONCRETE	NORTH OR WEST GUTTER	NORTH OR WEST GUTTER
MANHOLE	MANHOLE	MANHOLE	ASPHALT	SOUTH OR EAST GUTTER	SOUTH OR EAST GUTTER
CATCH BASIN	CATCH BASIN	CATCH BASIN	SIDEWALK	NORTH MEDIAN GUTTER	NORTH MEDIAN GUTTER
HYDRO	HYDRO	HYDRO	ASPHALT MILL & FILL	SOUTH MEDIAN GUTTER	SOUTH MEDIAN GUTTER
GAS	GAS	GAS	STREET LIGHT	NORTH OR WEST P.L.	NORTH OR WEST P.L.
TRANSIT STOP	TRANSIT STOP	TRANSIT STOP	HYDRO POLE	SOUTH OR EAST P.L.	SOUTH OR EAST P.L.
PROPERTY LINE	PROPERTY LINE	PROPERTY LINE	SURVEY BAR		
			ELEVATION		
			SIDEWALK RAMP		

LOCATION APPROVED UNDERGROUND STRUCTURES
 SUPV. U/G STRUCTURES COMMITTEE DATE
 NOTE:
 LOCATION OF UNDERGROUND STRUCTURES AS SHOWN ARE BASED ON THE BEST INFORMATION AVAILABLE BUT NO GUARANTEE IS GIVEN THAT ALL EXISTING UTILITIES ARE SHOWN OR THAT THE GIVEN LOCATIONS ARE EXACT. CONFIRMATION OF EXISTENCE AND EXACT LOCATION OF ALL SERVICES MUST BE OBTAINED FROM THE INDIVIDUAL UTILITIES BEFORE PROCEEDING WITH CONSTRUCTION.

B.M. ELEV.					
0	ISSUED FOR TENDER	20.04.03	R.K.H.		
NO.	REVISIONS	DATE	BY	DATE	

Stantec
 500 - 311 Portage Avenue, Winnipeg MB Canada
 www.stantec.com

DESIGNED BY	J.D., T.G.	CHECKED BY	S.R.S.
DRAWN BY	V.K.	APPROVED BY	R.K.H.
HOR. SCALE:	1:250	RELEASED FOR CONSTRUCTION:	
VERTICAL:	1:10	DATE	2019/11/05

ENGINEER'S SEAL
PRELIMINARY DRAWING
 NOT TO BE USED FOR CONSTRUCTION
 CONSULTANT DRAWING NO.
C-201

THE CITY OF WINNIPEG
 PUBLIC WORKS DEPARTMENT
 ENGINEERING DIVISION

ROBLIN BOULEVARD PAVEMENT RENEWAL

ROBLIN BOULEVARD
 STA 1+730 TO STA 1+840
 ROADWORKS - RENEWAL

SHEET	OF
8	50
CAD FILE DRAWING NUMBER	08080c-201-xxx.dwg
CITY DRAWING NUMBER	P-3528-8