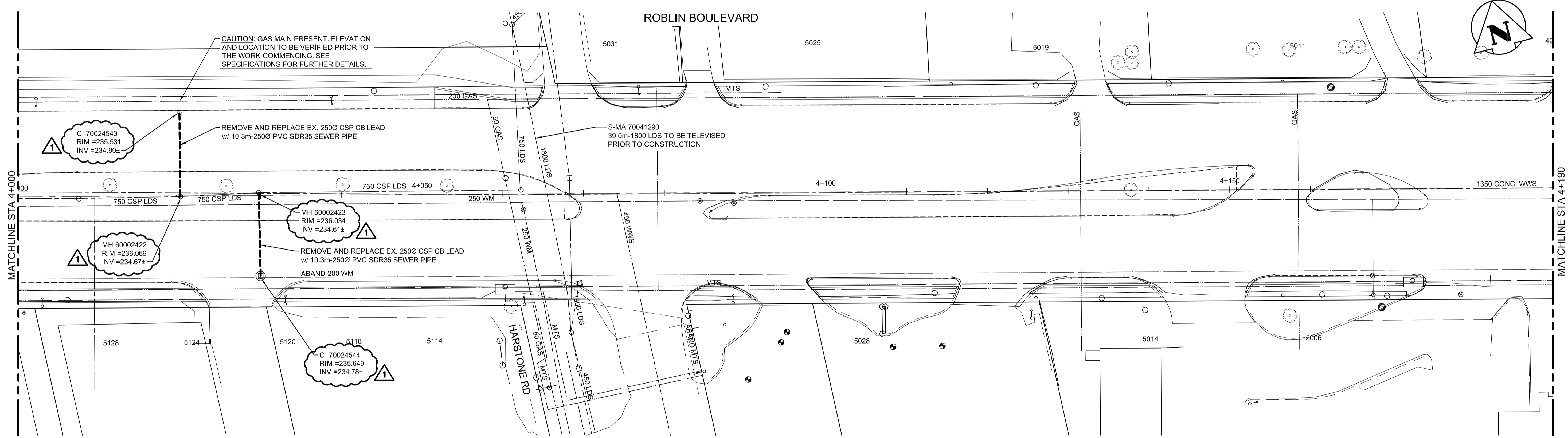
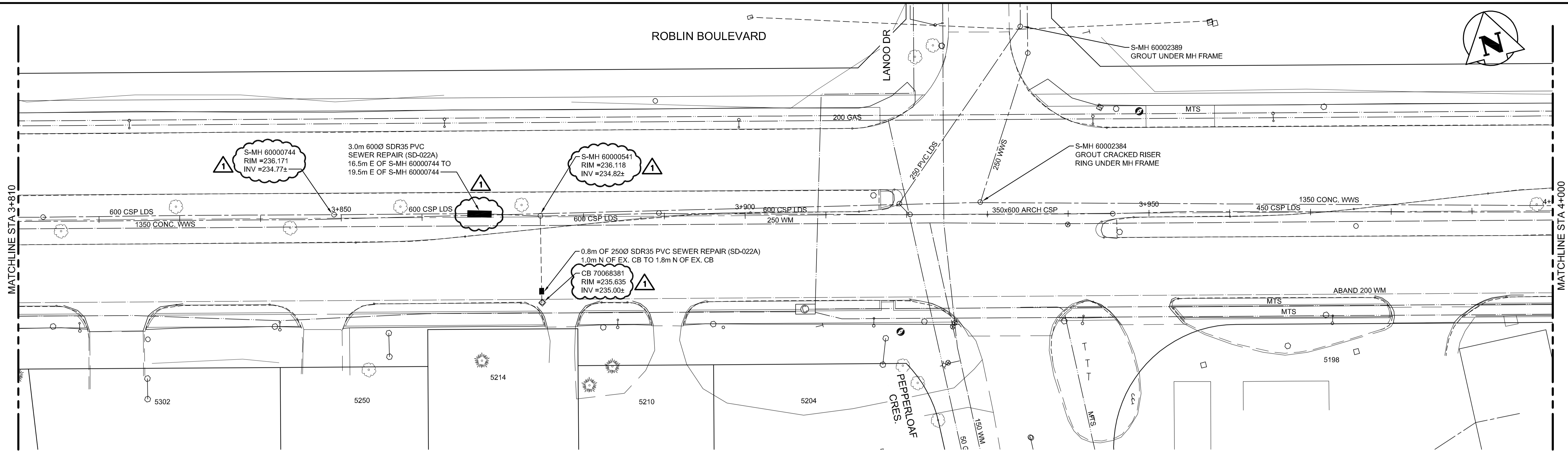


ROBLIN BOULEVARD



**WARNING**

IF POWER EQUIPMENT OR EXPLOSIVES ARE TO BE USED FOR EXCAVATION ON THIS PROJECT THE CONTRACTOR MUST:  
 1) NOTIFY THE GAS COMPANY OF THE PROPOSED LOCATION OF EXCAVATION.  
 2) TAKE PRECAUTION TO AVOID DAMAGE TO GAS COMPANY INSTALLATIONS.  
 SEE PROVINCIAL REGULATION 140/92 FOR DETAILS

**METRIC**

WHOLE NUMBERS INDICATE MILLIMETRES  
 DECIMALIZED NUMBERS INDICATE METRES

**NOTES:**

- ADJUST ALL MANHOLE, CATCH BASIN, CATCH PIT AND GATE VALVES TO PROPOSED GRADES.
- CONTRACTOR TO CONFIRM THE LOCATION OF ALL UTILITIES / SERVICES IN THE FIELD PRIOR TO CONSTRUCTION.
- HYDRANT BARREL EXTENSIONS TO INCLUDE BARREL EXTENSION, STEM EXTENSIONS, STEM COUPLINGS, BREAK AWAY FLANGES OR KITS, RUBBER SEALS, FLANGE GASKETS AND FASTENERS REQUIRED TO RAISE EXISTING HYDRANT FLANGE ELEVATIONS.

EXISTING	LEGEND-PLAN	PROPOSED	EXISTING	LEGEND-PLAN	PROPOSED	EXISTING	LEGEND-PROFILE	PROPOSED
150 WM	WATERMAIN	150 WM	M.T.S.	GLAS GRID	XXXXXX	— — — — —	PROFILE	NORTH OR WEST GUTTER
300 LDS	LAND DRAINAGE SEWER	300 LDS	CONCRETE	ASPHALT	=====	— — — — —	PROFILE	SOUTH OR EAST GUTTER
250 WWS	WASTE WATER SEWER	250 WWS	ASPHALT MILL & FILL	STREET LIGHT	•••••	— — — — —	PROFILE	NORTH MEDIAN GUTTER
○	MANHOLE	●	ASPHALT MILL & FILL	HYDRO POLE	•	— — — — —	PROFILE	SOUTH MEDIAN GUTTER
□	CATCH BASIN	■	ASPHALT MILL & FILL	SURVEY BAR	+	— — — — —	PROFILE	NORTH OR WEST P L
○	HYDRO	○	ASPHALT MILL & FILL	ELEVATION	(32.231)	— — — — —	PROFILE	SOUTH OR EAST P L
○	GAS	○	ASPHALT MILL & FILL	SIDEWALK RAMP	=====	— — — — —	PROFILE	
○	TRANSIT STOP	(31.334)	ASPHALT MILL & FILL			— — — — —	PROFILE	
○	PROPERTY LINE	— — — — —	ASPHALT MILL & FILL			— — — — —	PROFILE	
○	LEGEND-PLAN	PROPOSED	ASPHALT MILL & FILL			— — — — —	PROFILE	

**LOCATION APPROVED UNDERGROUND STRUCTURES**

SUPV. U/G STRUCTURES COMMITTEE DATE

**NOTE:**  
 LOCATION OF UNDERGROUND STRUCTURES AS SHOWN ARE BASED ON THE BEST INFORMATION AVAILABLE BUT NO GUARANTEE IS GIVEN THAT ALL EXISTING UTILITIES ARE SHOWN OR THAT THE GIVEN LOCATIONS ARE EXACT. CONFIRMATION OF EXISTENCE AND EXACT LOCATION OF ALL SERVICES MUST BE OBTAINED FROM THE INDIVIDUAL UTILITIES BEFORE PROCEEDING WITH CONSTRUCTION.

NO.	REVISIONS	DATE	BY
1	ISSUED FOR ADDENDUM NO.1	20.04.09	R.K.H.
0	ISSUED FOR TENDER	20.04.03	R.K.H.

**Stantec**  
 500 - 311 Portage Avenue, Winnipeg MB Canada  
 www.stantec.com

DESIGNED BY	R.S.	CHECKED BY	R.S.
DRAWN BY	O.S.	APPROVED BY	R.S.
HOR. SCALE:	1:250	RELEASED FOR CONSTRUCTION:	
VERTICAL:		DATE	2020/02/10

ENGINEER'S SEAL  
**PRELIMINARY DRAWING**  
 NOT TO BE USED FOR CONSTRUCTION  
 CONSULTANT DRAWING NO. U208

**THE CITY OF WINNIPEG**  
 PUBLIC WORKS DEPARTMENT  
 ENGINEERING DIVISION

ROBLIN BOULEVARD PAVEMENT RENEWAL  
 STA 3+810 TO STA 4+190  
 MUNICIPAL UTILITIES

SHEET 40 OF 50  
 CAD FILE DRAWING NUMBER 08080u-204.dwg  
 CITY DRAWING NUMBER P-3528-40

N:\CADD\15-04-001\15-04-001\15-04-001.dwg  
 2020/04/09 11:27 AM R.K.H.