

- CONSTRUCTION NOTES**
- REMOVE EXISTING SIDEWALK AND CONSTRUCT NEW 100mm CONCRETE SIDEWALK (SD-228A)
 - REMOVE EXISTING CURB BY PLANING (SD-202C) AND CONSTRUCT NEW BARRIER CURB (SD-205)
 - REMOVE EXISTING ASPHALT
 - INSTALL NEW CATCH PIT WITH CURB AND GUTTER INLET FRAME (SD-023), AND CONNECT TO CATCH BASIN WITH 250mm PVC PIPE AS PER CW 2130
 - REGRADE EXISTING PATIO BLOCKS
 - INSTALL NEW 1800 CATCH BASIN WITH CURB & GUTTER INLET (SD-024) CONNECT TO MANHOLE WITH 250mm PVC PIPE AS PER CW 2130
 - INSTALL NEW CURB AND GUTTER INLET FRAME (SD-023)
 - REGRADE EXISTING PAVING STONES
 - ADJUST MANHOLE FRAME
 - REMOVE EXISTING CURB INLET
 - REMOVE EXISTING CATCH PIT
 - CONSTRUCT NEW 100mm CONCRETE SIDEWALK (SD-228A)

- GENERAL NOTES**
- PAVEMENT DIMENSIONS ARE TO BACK OF CURB
 - ALL CURB RADII UNDER 15.0m SHALL BE MODIFIED
 - CURB REPLACEMENT AS DIRECTED BY CONTRACT ADMINISTRATOR
 - INSTALL DETECTABLE WARNING TILES AS DIRECTED BY CONTRACT ADMINISTRATOR (CW 3326)
 - PAVEMENT REPAIRS SHOWN ARE ONLY A REPRESENTATIVE SAMPLE OF THE TENDERED QUANTITIES
 - ASPHALT TIE-INS ON APPROACHES TO BE DETERMINED IN THE FIELD BY THE CONTRACT ADMINISTRATOR

PRELIMINARY
NOT TO BE USED FOR
CONSTRUCTION

METRIC
WHOLE NUMBERS INDICATE MILLIMETERS
DECIMALIZED NUMBERS INDICATE METERS
BID OPPORTUNITY NO. 102-2020

EXISTING	LEGEND - PLAN	PROPOSED	EXISTING	LEGEND - PLAN	PROPOSED	EXISTING	LEGEND - PROFILE	PROPOSED
⊕	HYDRANT	⊕	---	LDS/WWS	---	▒	CONCRETE	▒
⊗	VALVE	⊗	---	WATERMAIN	---	▒	CONCRETE SIDEWALK	▒
⊙	CURB STOP	⊙	---	GAS	---	▒	ASPHALT	▒
⊚	MANHOLE	⊚	---	TRAFFIC SIGNALS	---	▒	METAL FENCE	▒
⊛	CATCH BASIN	⊛	---	HYDRO/STREET LIGHT	---	▒	CONCRETE FENCE	▒
△	CURB INLET / CATCH PIT	△	---	MTS/SHAW	---	---	LEGEND - PLAN	---
⊙	HYDRO POLE	⊙	---	CURB RENEWAL	---	---	PROPOSED	---
⊙	LIGHT STANDARD	⊙	---	PROPERTY LINE	---	---		---
⊙	TRAFFIC SIGNAL POLE	⊙	---	RAMP CURB	---	---		---
⊕	SURVEY BAR	⊕	---	ELEVATIONS	(31.000)	---		---
⊕	GEODETIC BENCH MARK	⊕	---	TREE	---	---		---

LOCATION APPROVED
UNDERGROUND STRUCTURES

DATE: _____

NOTE:
LOCATION OF UNDERGROUND STRUCTURES AS SHOWN ARE BASED ON THE BEST INFORMATION AVAILABLE. BUT NO GUARANTEE IS GIVEN THAT ALL EXISTING UTILITIES ARE SHOWN OR THAT THE GIVEN LOCATIONS ARE EXACT. CONFIRMATION OF EXISTENCE AND EXACT LOCATION OF ALL SERVICES MUST BE OBTAINED FROM THE INDIVIDUAL UTILITIES BEFORE PROCEEDING WITH CONSTRUCTION.

B.M. ELEV. 231.655
I.B. @ NE CORNER OF 2 ROUGEAU AVE

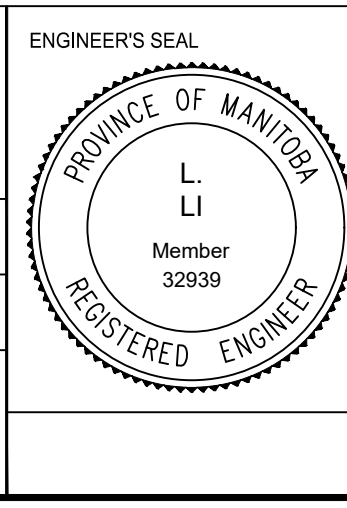
ENGINEERING DIVISION
TECHNOLOGY SERVICES BRANCH
106 - 1155 PACIFIC AVE

DESIGNED BY: C.W.
CHECKED BY: G.K. C.H. M.L.

DRAWN BY: C.W.
APPROVED BY:

HOR. SCALE: 1 : 250
VERTICAL: 1 : 10

DATE: 2020/03/27



THE CITY OF WINNIPEG
PUBLIC WORKS DEPARTMENT

ROUGEAU AVE
FROM BOURNAIS DR TO HATCHER RD
ASPHALT OVERLAY AND ASSOCIATED WORKS
FROM STA. 2+10 TO STA. 3+43

CITY DRAWING NUMBER: SE-20-60
SHEET 2 OF 3

2