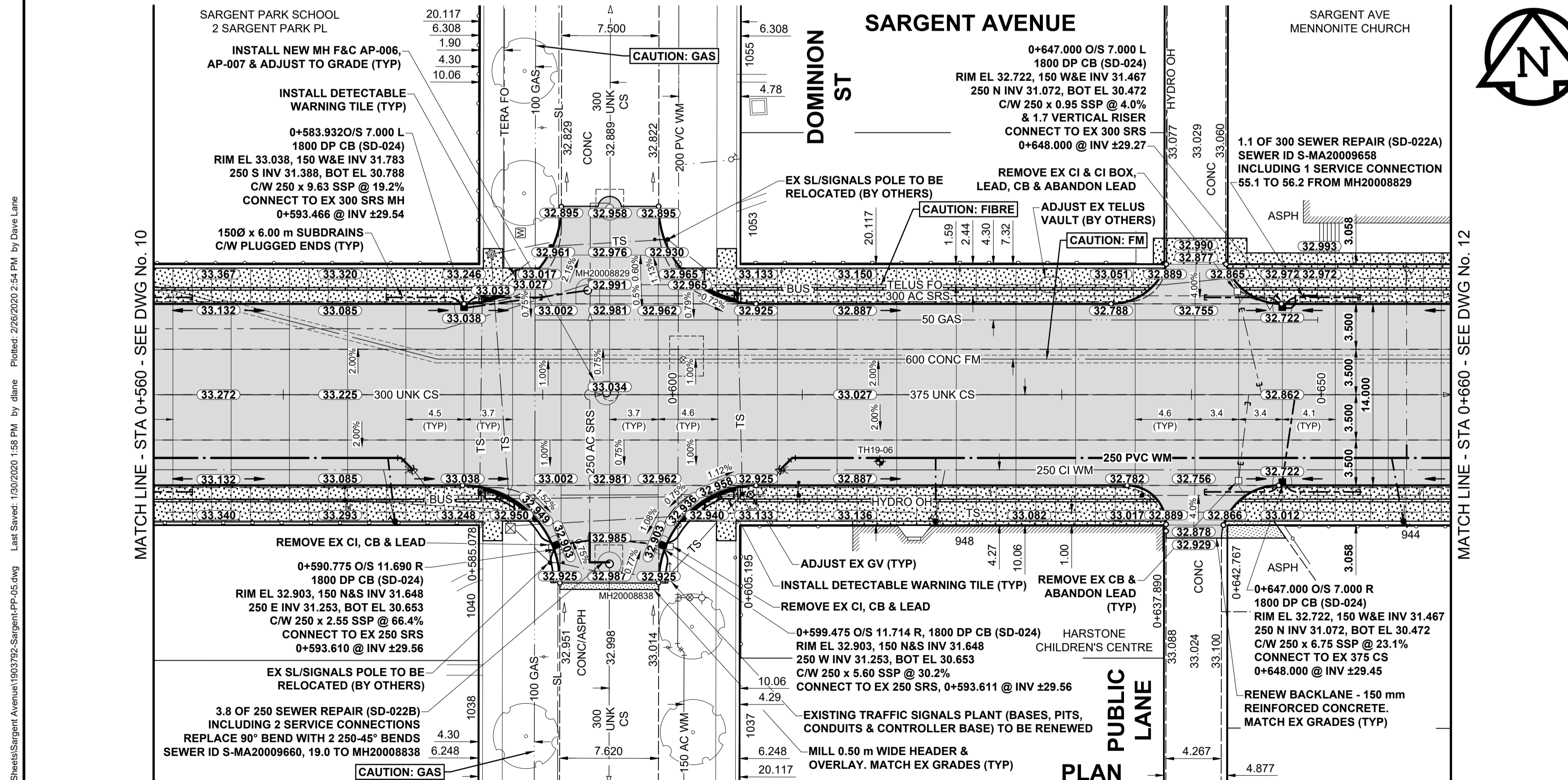


- FEEDERMAIN NOTES
1. CONTACT THE WATER AND WASTE DEPARTMENT'S CONSTRUCTION SERVICES COORDINATOR AT 204-986-4289, 7 DAYS PRIOR TO THE COMMENCEMENT OF CONSTRUCTION TO ARRANGE FOR AN INSPECTION.
2. PRIOR TO ANY CONSTRUCTION, THE FEEDERMAIN MUST BE EXPOSED BY A SOFT DIG METHOD SO AS TO CONFIRM DEPTH AND LOCATION.
3. A MINIMUM CLEARANCE OF 0.5 m MUST BE PROVIDED BETWEEN THE UNDERSIDE OF THE PROPOSED WORKS AND THE TOP ANY EXISTING FEEDERMAIN BY TRENCHLESS OR OPEN TRENCH.

- NOTES
1. ADJUST MH AND CB RIMS TO NEW GRADES.
2. LAMP STANDARDS, HYDRO POLES, AND ANCHORS THAT REQUIRE TEMPORARY SUPPORT AND BACKFILL TO BE DONE SO AT THE EXPENSE OF THE CONTRACTOR AS NECESSARY.
3. CONTRACTOR TO REGRADE/RENEW EXISTING PRIVATE SIDEWALKS TO LIMITS AS SHOWN. SIDEWALKS TO BE RENEWED WITH CONCRETE UNLESS NOTED OTHERWISE.



METRIC
WHOLE NUMBERS INDICATE MILLIMETRES
DECIMALIZED NUMBERS INDICATE METRES

Legend table with columns for EXISTING, LEGEND - PLAN, NEW, EXISTING, LEGEND - PLAN, NEW, EXISTING, LEGEND - PLAN, NEW. Includes symbols for Gas, Manhole, Catch Basin, Tree, Concrete Pavement, etc.

Location Approved table with columns for Location Approved, Underground Structures, Date. Includes notes about utility locations and construction procedures.

Professional's Seal table with columns for Professional's Seal, Preliminary Drawing, Not to be used for construction, Consultant File Name.

THE CITY OF WINNIPEG PUBLIC WORKS DEPARTMENT ENGINEERING DIVISION
2020 PAVEMENT RENEWALS PROJECT
SARGENT AVENUE RECONSTRUCTION
ERIN STREET TO ARLINGTON STREET
SARGENT AVENUE PAVING AND GRADING
STA 0+560 TO STA 0+660

P:\2019\19037920-2019-2020\19037920-Sargent\Sheet\19037920-Sargent-PP-05.dwg
Last Saved: 1/30/2020 1:58 PM by diane
Plot Date: 2/26/2020 2:54 PM by Dave Lane