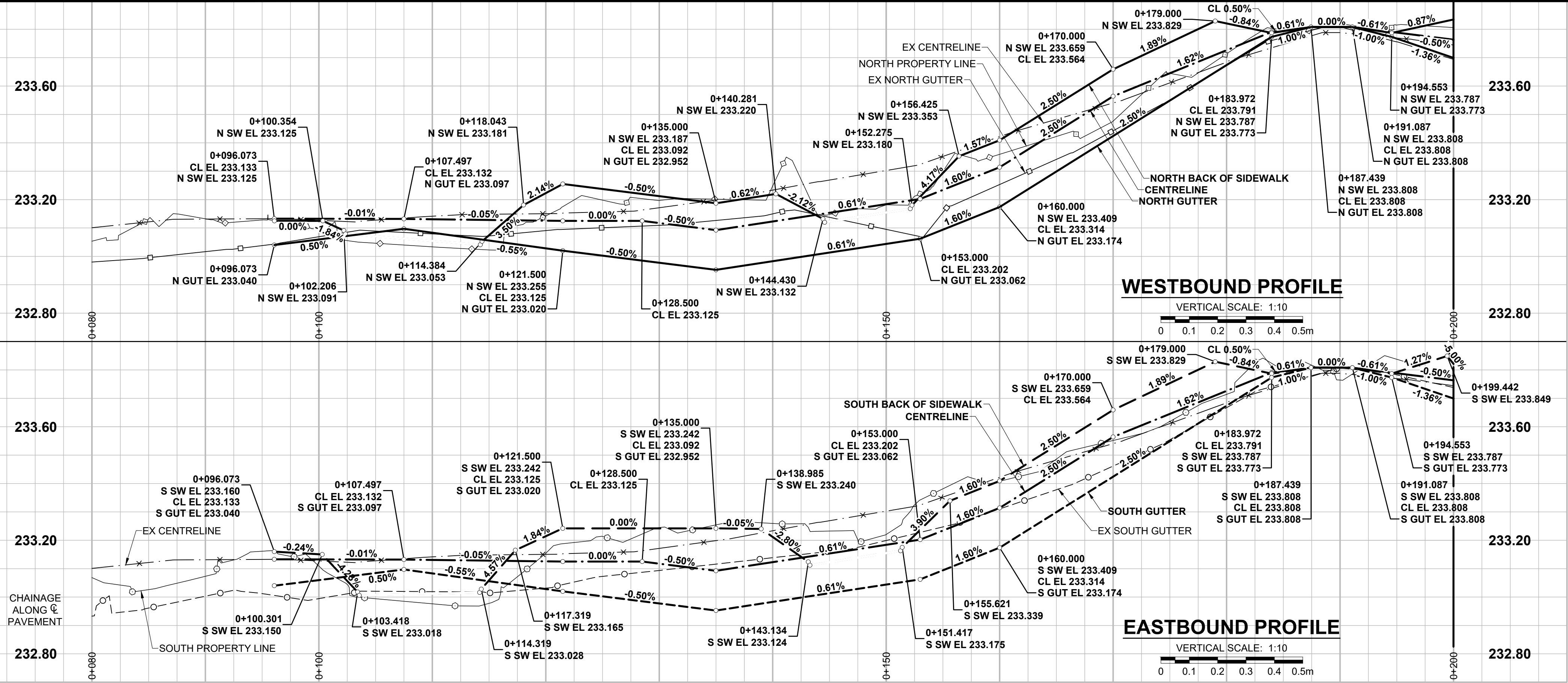
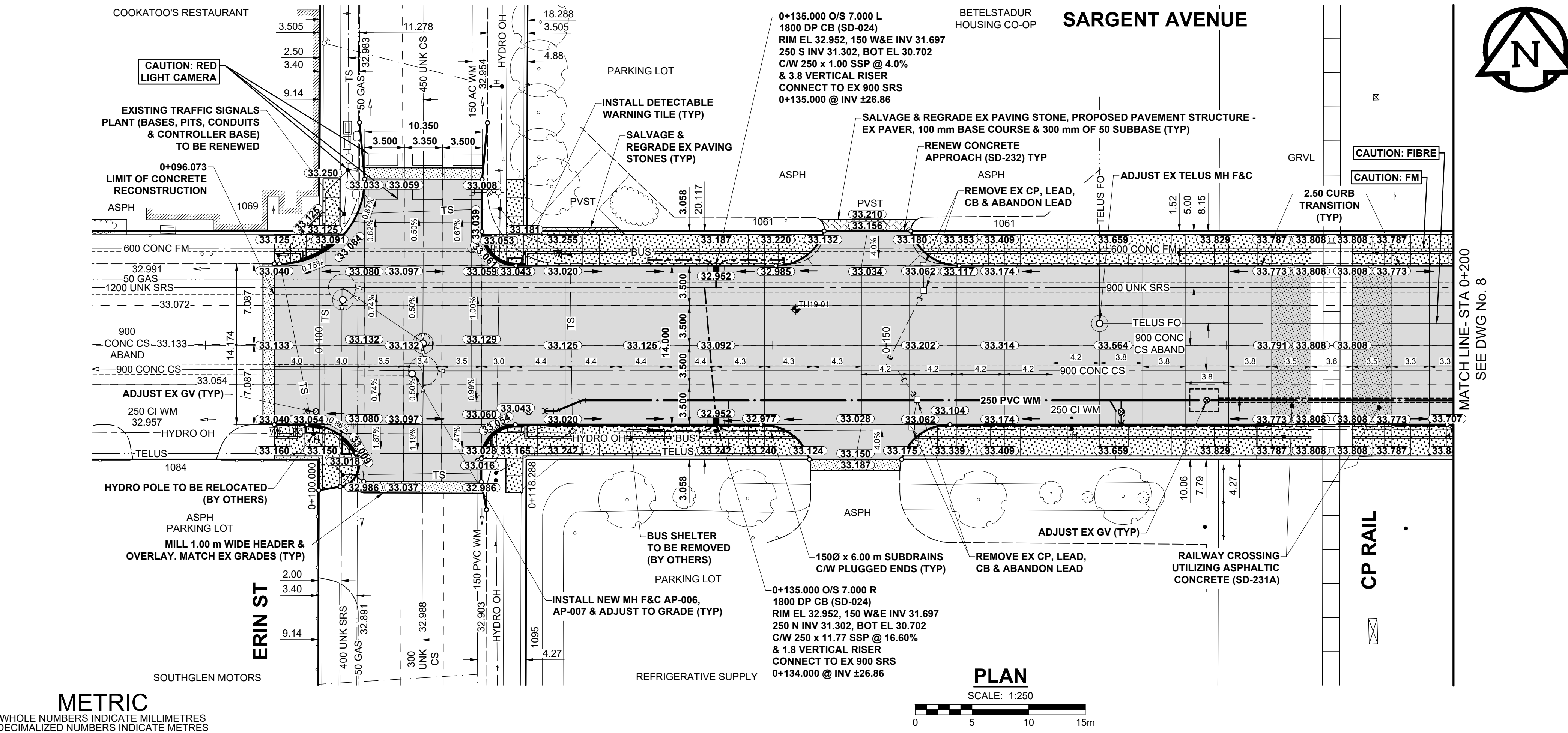


ISO A1 - 594mm x 841mm
 P:\2019\1903792\2019-2020\ERIN\Wall-Sargent\Sheet09_CAD\07 Sheets\Sargent Avenue\1903792-Sargent-PP-01.dwg
 Last Saved: 2/19/2020 11:30 AM By: Diane
 Printed: 2/26/2020 2:45 PM by Dave Lane



- FEEDERMAIN NOTES**
- CONTACT THE WATER AND WASTE DEPARTMENT'S CONSTRUCTION SERVICES COORDINATOR AT 204-986-4289, 7 DAYS PRIOR TO THE COMMENCEMENT OF CONSTRUCTION TO ARRANGE FOR AN INSPECTION.
 - PRIOR TO ANY CONSTRUCTION, THE FEEDERMAIN MUST BE EXPOSED BY A SOFT DIG METHOD SO AS TO CONFIRM DEPTH AND LOCATION.
 - A MINIMUM CLEARANCE OF 0.5 m MUST BE PROVIDED BETWEEN THE UNDERSIDE OF THE PROPOSED WORKS AND THE TOP ANY EXISTING FEEDERMAIN BY TRENCHLESS OR OPEN TRENCH.
- NOTES**
- ADJUST MH AND CB RIMS TO NEW GRADES.
 - LAMP STANDARDS, HYDRO POLES, AND ANCHORS THAT REQUIRE TEMPORARY SUPPORT AND BACKFILL TO BE DONE SO AT THE EXPENSE OF THE CONTRACTOR AS NECESSARY.
 - CONTRACTOR TO REGRADE/RENEW EXISTING PRIVATE SIDEWALKS TO LIMITS AS SHOWN. SIDEWALKS TO BE RENEWED WITH CONCRETE UNLESS NOTED OTHERWISE.
 - CONTRACTOR TO TAKE PRECAUTIONARY STEPS TO PROTECT EXISTING TREES WITHIN THE LIMITS OF CONSTRUCTION FROM DAMAGE FROM CONSTRUCTION ACTIVITIES AS OUTLINED IN THE SPECIFICATIONS.
 - CONTRACTOR TO CONFIRM THE LOCATION OF ALL UTILITIES/SERVICES IN THE FIELD PRIOR TO CONSTRUCTION.
 - CB SD-023 & SD-024 OFFSETS ARE DIMENSIONED TO BOC. CB SD-025 OFFSETS ARE DIMENSIONED O/C.
 - IN GENERAL, PAVEMENT AND SIDEWALK AREAS TO BE REMOVED. MATCH RECONSTRUCTION LIMITS.
 - REFER TO TENDER FOR DETAILS REGARDING TRAFFIC MANAGEMENT.
 - EXISTING LONG WATER SERVICES TO BE INSULATED (SD-018). REFER TO TENDER FOR FURTHER REQUIREMENTS AND AS NOTED IN PLAN.
 - ALL COSTS, MATERIALS AND LABOR ASSOCIATED WITH THE RESTORATION OF THE CATHODIC PROTECTED WATERMAIN WILL BE RESPONSIBILITY OF THE CONTRACTOR.
 - MATCH EXISTING GRADES AT DOOR SILLS.
 - ADD 200.000 m TO ABBREVIATED ELEVATIONS TO OBTAIN GEODETIC ELEVATIONS.



METRIC
WHOLE NUMBERS INDICATE MILLIMETRES
DECIMALIZED NUMBERS INDICATE METRES

EXISTING	NEW	EXISTING	NEW	EXISTING	NEW	EXISTING	NEW
---	---	○	○	●	●	CONCRETE PAVEMENT	CONCRETE PAVEMENT
---	---	△	△	■	■	CONC SIDEWALK/MEDIAN	CONC SIDEWALK/MEDIAN
---	---	□	□	▲	▲	ASPHALT PAVEMENT	ASPHALT PAVEMENT
---	---	○	○	▲	▲	PAVING STONE	PAVING STONE
---	---	○	○	▲	▲	GRAVEL	GRAVEL
---	---	○	○	▲	▲	RAMP CURB	RAMP CURB
---	---	○	○	▲	▲	PLANING/REMOVAL	PLANING/REMOVAL
---	---	○	○	▲	▲	LOCATION APPROVED	LOCATION APPROVED
---	---	○	○	▲	▲	UNDERGROUND STRUCTURES	UNDERGROUND STRUCTURES
---	---	○	○	▲	▲	DATE	DATE
---	---	○	○	▲	▲	NOTE:	NOTE:
---	---	○	○	▲	▲	LOCATION OF UNDERGROUND STRUCTURES	LOCATION OF UNDERGROUND STRUCTURES
---	---	○	○	▲	▲	AS SHOWN ARE BASED ON THE BEST	AS SHOWN ARE BASED ON THE BEST
---	---	○	○	▲	▲	INFORMATION AVAILABLE BUT NO	INFORMATION AVAILABLE BUT NO
---	---	○	○	▲	▲	GUARANTEE IS GIVEN THAT ALL EXISTING	GUARANTEE IS GIVEN THAT ALL EXISTING
---	---	○	○	▲	▲	UTILITIES ARE SHOWN OR THAT THE GIVEN	UTILITIES ARE SHOWN OR THAT THE GIVEN
---	---	○	○	▲	▲	LOCATIONS ARE EXACT. CONFIRMATION OF	LOCATIONS ARE EXACT. CONFIRMATION OF
---	---	○	○	▲	▲	EXISTENCE AND EXACT LOCATION OF ALL	EXISTENCE AND EXACT LOCATION OF ALL
---	---	○	○	▲	▲	SERVICES MUST BE OBTAINED FROM THE	SERVICES MUST BE OBTAINED FROM THE
---	---	○	○	▲	▲	INDIVIDUAL UTILITIES BEFORE PROCEEDING	INDIVIDUAL UTILITIES BEFORE PROCEEDING
---	---	○	○	▲	▲	WITH CONSTRUCTION.	WITH CONSTRUCTION.

MORRISON HERSHFIELD

DESIGNED BY: WRJ
CHECKED BY: RPB
DRAWN BY: DML
APPROVED BY: BWB

ISSUED FOR TENDER: 20/02/27
ISSUED FOR REVIEW: 20/02/03

HOR SCALE: 1:250
VERT SCALE: 1:10

DATE: 20/02/03

THE CITY OF WINNIPEG
PUBLIC WORKS DEPARTMENT
ENGINEERING DIVISION

2020 PAVEMENT RENEWALS PROJECT
SARGENT AVENUE RECONSTRUCTION
ERIN STREET TO ARLINGTON STREET

SARGENT AVENUE
PAVING AND GRADING
ERIN ST TO STA 0+200

CITY DRAWING NUMBER: P-3519-07
SHEET 7 OF 26
DRAWING NUMBER: 7

PROFESSIONAL'S SEAL: PRELIMINARY DRAWING
NOT TO BE USED FOR CONSTRUCTION

CONSULTANT FILE NAME: 1903792-Sargent-PP-01.dwg

TENDER No. 10-2020