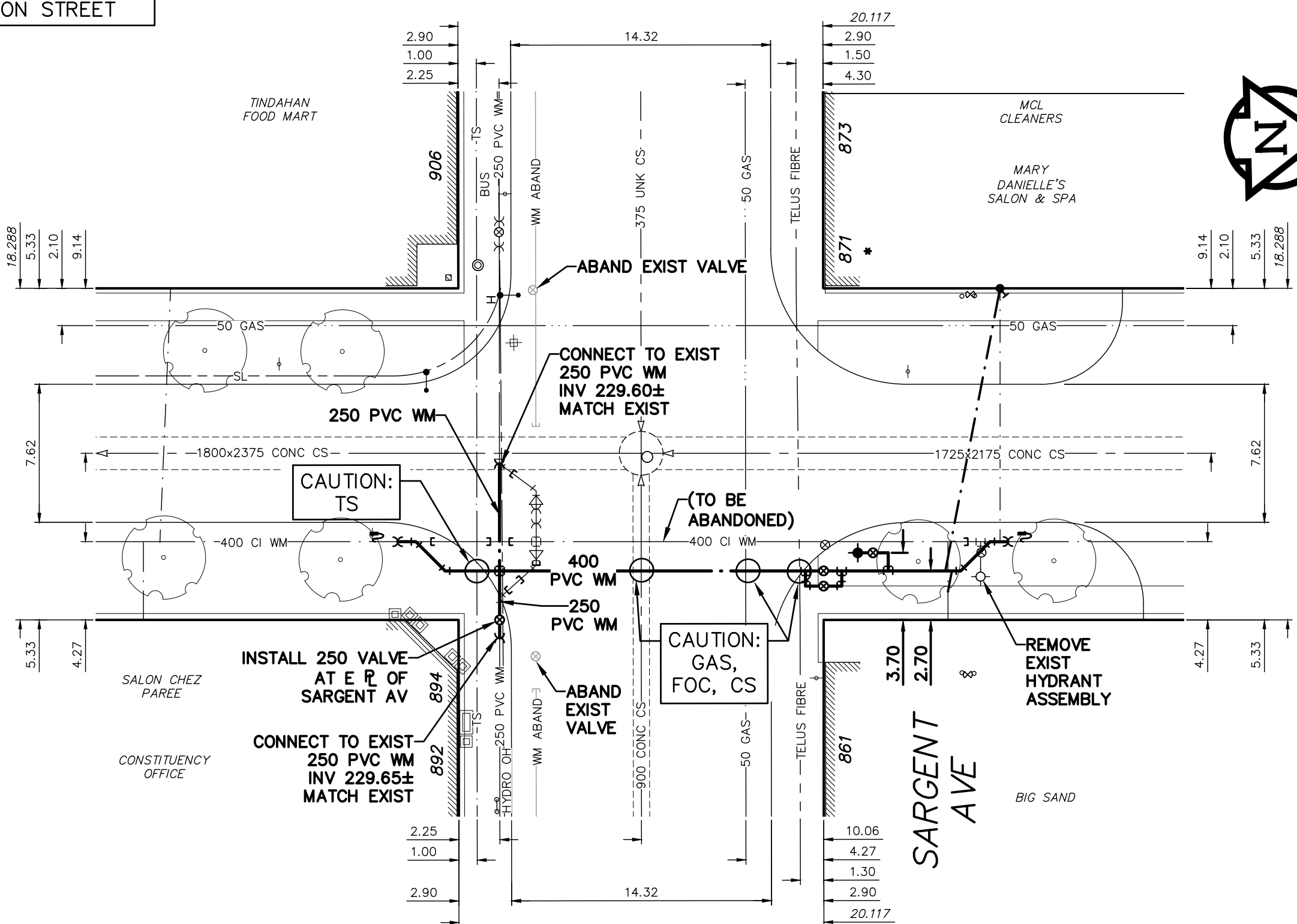


NOTE: CHAINAGES SHOWN ARE ALONG E.P. OF LIPTON STREET

LIPTON STREET



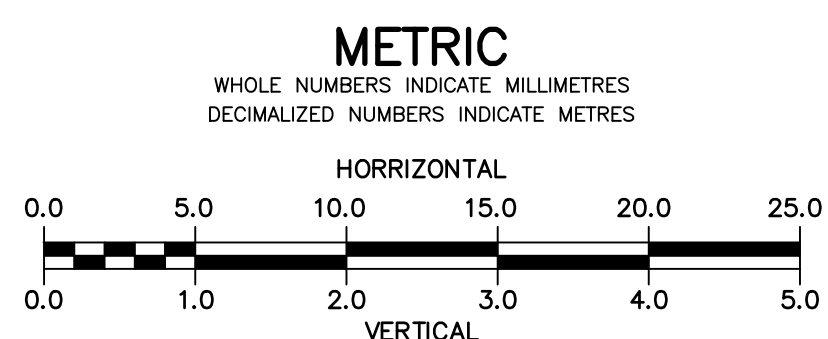
WATER SERVICE INFORMATION

ADDRESS	SIZE (mm) MATERIAL (STREET)	SIZE (mm) MATERIAL (PROP.)	SHORT & LONG MEASUREMENT	CORP. LOCATION	REMARKS
859/861 SARGENT AV	-	-	-	-	RECONNECT SERVICE
871/873 SARGENT AV	-	-	-	OPP CURB STOP	RENEW SERVICE TO P.I. WITH 25 CU
892/894 SARGENT AV	20	20	4.27 NSL BUILDING	OPP CURB STOP	SERVICED OFF LIPTON ST
906 SARGENT AV	-	-	17.37 SARGENT AV	-	OUTSIDE RENEWAL LIMITS

* SERVICES TO BE RENEWED TO R. ALL OTHERS TO BE RECONNECTED

FOR INDEX SEE D-15619

NOTE: ALL VALVES TO BE INSTALLED COUNTERCLOCKWISE TO CLOSE



WARNING
IF POWER EQUIPMENT OR EXPLOSIVES ARE TO BE USED FOR EXCAVATION ON THIS PROJECT THE CONTRACTOR MUST:
1) NOTIFY THE GAS COMPANY OF THE PROPOSED LOCATION OF EXCAVATION.
2) TAKE PRECAUTION TO AVOID DAMAGE TO GAS COMPANY INSTALLATIONS.
SEE PROVINCIAL REGULATION 210/72 FOR DETAILS

LOCATION APPROVED UNDERGROUND STRUCTURES
SUPV. U/G STRUCTURES COMMITTEE DATE
NOTE:
LOCATION OF UNDERGROUND STRUCTURES AS SHOWN ARE BASED ON THE BEST INFORMATION AVAILABLE BUT NO GUARANTEE IS GIVEN THAT ALL EXISTING UTILITIES ARE SHOWN OR THAT THE GIVEN LOCATIONS ARE EXACT. CONFIRMATION OF EXISTENCE AND EXACT LOCATION OF ALL UTILITIES MUST BE OBTAINED FROM THE INDIVIDUAL UTILITIES BEFORE PROCEEDING WITH CONSTRUCTION.

B.M. ELEV.	36-061 233.359 m	N.W. Cor. Sargent Ave. & Garfield St. N., Tblt. in S. Conc. foundation of Sargent Ave. Mennonite Church, 0.5 m W. & 1.7 m below brick of S.E. Cor. of Bldg.
NO.	REVISIONS	DATE BY

DESIGNED BY	JKH	CHECKED BY	HAK
DRAWN BY	DML	APPROVED BY	HAK
SCALE:	HORIZONTAL 1:250 VERTICAL 1:50		
DATE	2019 12 20	DATE	2020 01 29

ENGINEER'S SEAL
ORIGINAL SIGNED BY H.A. KATZ
2020 01 29
CONSULTANT DRAWING NUMBER

THE CITY OF WINNIPEG
WATER AND WASTE DEPARTMENT
ENGINEERING DIVISION
2020 WATER MAIN RENEWAL - CONTRACT 7
SARGENT AVENUE - ERIN ST TO LIPTON ST
LIPTON STREET
10 S OF SARGENT AVENUE TO
10 N OF SARGENT AVENUE
SHEET 26 OF 26
CITY DRAWING NUMBER
D-15627