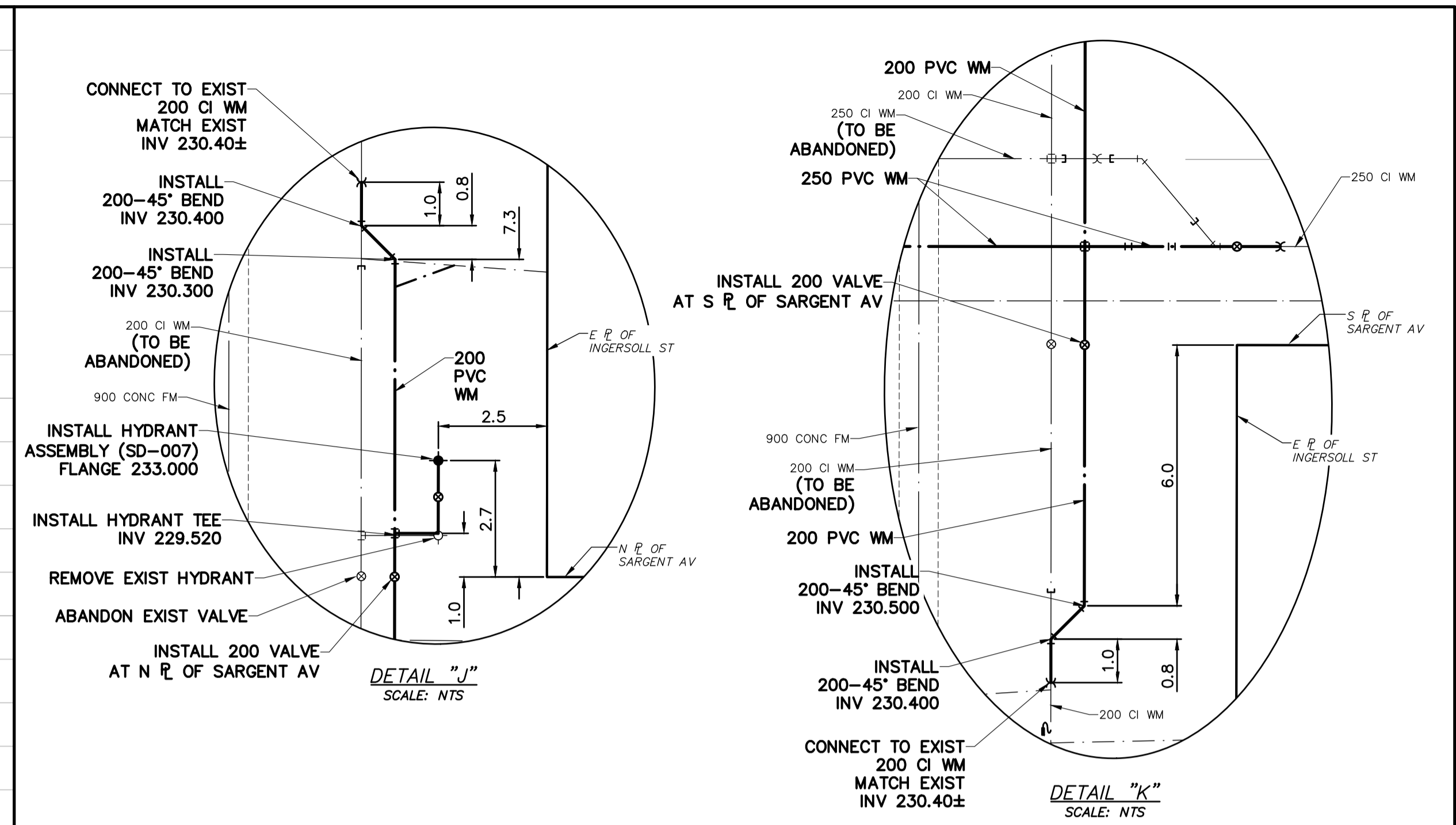
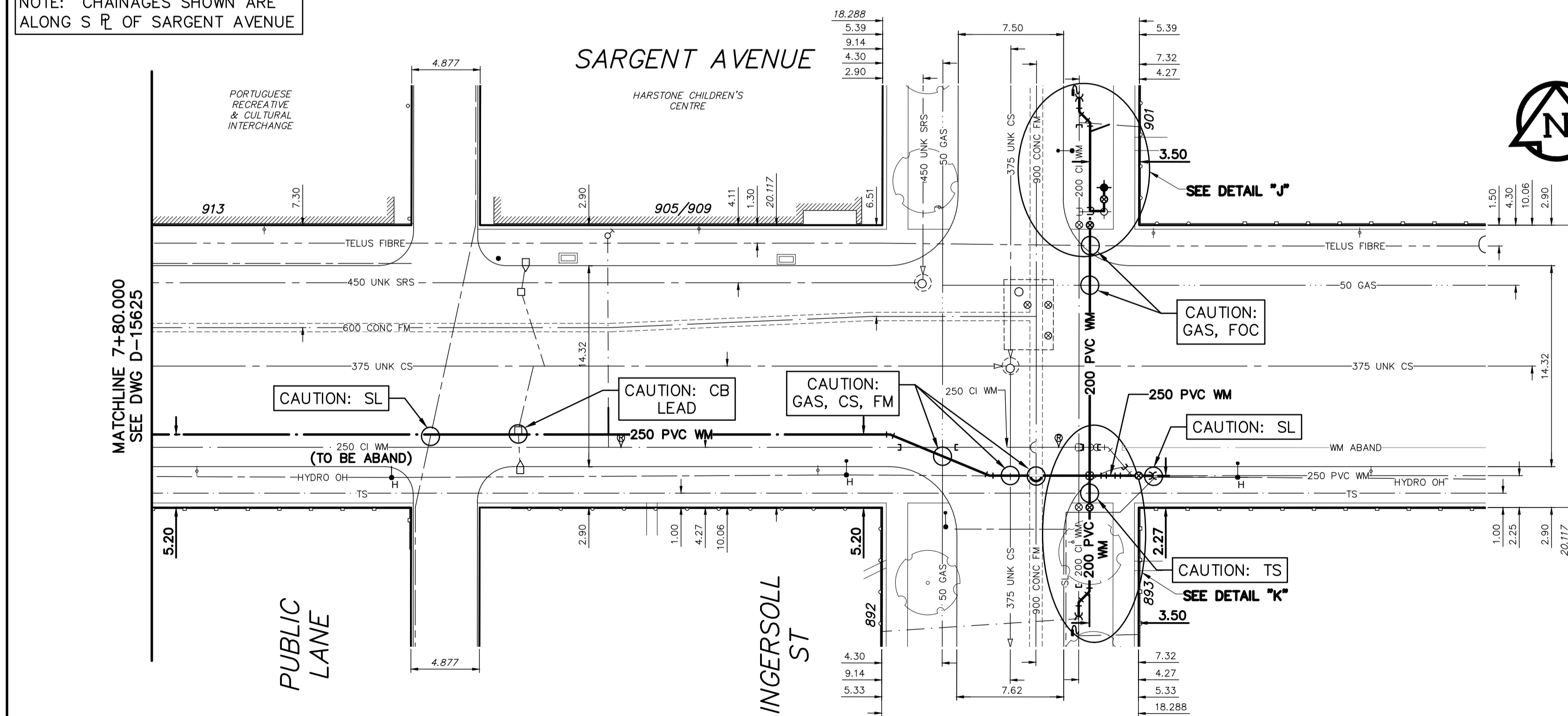


NOTE: CHAINAGES SHOWN ARE ALONG S.P. OF SARGENT AVENUE



INSTALLATION EQUIPMENT FOR THE PROPOSED WORKS SHALL NOT CROSS OR TRAVEL ALONG EITHER SIDE OF THE FEEDERMAIN WITHIN A LATERAL DISTANCE OF 5.0 METERS FROM THE CENTERLINE OF THE FEEDERMAIN.

CONCRETE DEMOLITION AND REMOVAL WITHIN 3 METERS HORIZONTALLY OF THE FEEDERMAIN SHALL BE COMPLETED BY SAWCUTTING AND REMOVAL, OR BY THE USE OF HAND HELD JACKHAMMERS. USE OF MACHINE MOUNTED CONCRETE BREAKERS ABOVE THE FEEDERMAIN SHALL NOT BE PERMITTED.

DO NOT OPERATE VIBRATORY EQUIPMENT OVER OR WITHIN 3.0 METERS OF THE FEEDERMAIN.

A MINIMUM CLEARANCE OF 1.0 METER MUST BE PROVIDED BETWEEN THE UNDERSIDE OF ANY EXISTING FEEDERMAIN AND THE TOP OF THE PROPOSED WORKS. THIS INSTALLATION BY TRENCHLESS METHOD ONLY.

A MINIMUM CLEARANCE OF 0.5 METER MUST BE PROVIDED BETWEEN THE UNDERSIDE OF THE PROPOSED WORKS AND THE TOP OF ANY EXISTING FEEDERMAIN BY TRENCHLESS METHOD OR OPEN TRENCH.

A SHAFT MUST BE EXCAVATED BY SOFT DIG METHODS 4.0 METERS FROM THE CENTERLINE OF THE FEEDERMAIN TO CONFIRM THE ALIGNMENT AND ELEVATION OF THE DRILLING ROD BEFORE IT CROSSES OVER OR UNDER THE FEEDERMAIN. THIS CONFIRMATION MUST BE WITNESSED BY A CITY REPRESENTATIVE.

WATER SERVICE INFORMATION

ADDRESS	SIZE (mm) MATERIAL (STREET)	SIZE (mm) MATERIAL (PROP.)	SHORT & LONG MEASUREMENT	CORP. LOCATION	REMARKS
905 SHERBURN ST	-	-	-	-	SERVICED OFF SHERBURN ST OUTSIDE RENEWAL LIMITS
913 SARGENT ST	-	-	-	-	SERVICED OFF SHERBURN ST OUTSIDE RENEWAL LIMITS
905/909 SARGENT ST	20	20	7.92 EWL OF CHURCH	OPP CURB STOP	RECONNECT SERVICE
892 INGERSOLL ST	-	-	-	-	SERVICED OFF INGERSOLL ST OUTSIDE RENEWAL LIMITS
893 INGERSOLL ST	-	-	-	-	SERVICED OFF INGERSOLL ST OUTSIDE RENEWAL LIMITS
901 INGERSOLL ST	-	-	-	-	RECONNECT SERVICE
901 INGERSOLL ST	-	-	-	-	SERVICED OFF INGERSOLL ST

* SERVICES TO BE RENEWED TO R. ALL OTHERS TO BE RECONNECTED

ENGINEERS GEOSCIENTISTS MANITOBA
Certificate of Authorization
MORRISON HERSHFIELD
No. 1736

METRIC
WHOLE NUMBERS INDICATE MILLIMETRES
DECIMALIZED NUMBERS INDICATE METRES

HORIZONTAL: 0.0, 5.0, 10.0, 15.0, 20.0, 25.0
VERTICAL: 0.0, 1.0, 2.0, 3.0, 4.0, 5.0

WARNING
IF POWER EQUIPMENT OR EXPLOSIVES ARE TO BE USED FOR EXCAVATION ON THIS PROJECT THE CONTRACTOR MUST:
1) NOTIFY THE GAS COMPANY OF THE PROPOSED LOCATION OF EXCAVATION.
2) TAKE PRECAUTION TO AVOID DAMAGE TO GAS COMPANY INSTALLATIONS.
SEE PROVINCIAL REGULATION 210/72 FOR DETAILS

LOCATION APPROVED UNDERGROUND STRUCTURES
SUPV. U/G STRUCTURES COMMITTEE DATE
NOTE:
LOCATION OF UNDERGROUND STRUCTURES AS SHOWN ARE BASED ON THE BEST INFORMATION AVAILABLE BUT NO GUARANTEE IS GIVEN THAT ALL EXISTING UTILITIES ARE SHOWN OR THAT THE GIVEN LOCATIONS ARE EXACT. CONFIRMATION OF EXISTENCE AND EXACT LOCATION OF ALL SERVICES MUST BE OBTAINED FROM THE INDIVIDUAL UTILITIES BEFORE PROCEEDING WITH CONSTRUCTION.

B.M. 36-061
ELEV. 233.359 m

N.W. Cor. Sargent Ave. & Garfield St. N., Tblt. in S. Conc. foundation of Sargent Ave. Mononite Church, 0.5 m W. & 1.7 m below brick of S.E. Cor. of Bldg.

NO.	REVISIONS	DATE	BY

MORRISON HERSHFIELD

DESIGNED BY	JKH	CHECKED BY	HAK
DRAWN BY	DML	APPROVED BY	HAK
SCALE: HORIZONTAL	1:250	RELEASED FOR CONSTRUCTION	KAS ZUREK
SCALE: VERTICAL	1:50	DATE	2020 01 29

ENGINEER'S SEAL
ORIGINAL SIGNED BY H.A. KATZ
2020 01 29
CONSULTANT DRAWING NUMBER

THE CITY OF WINNIPEG
WATER AND WASTE DEPARTMENT
ENGINEERING DIVISION

2020 WATER MAIN RENEWAL - CONTRACT 7
SARGENT AVENUE - ERIN ST TO LIPTON ST
SARGENT AVENUE
10 E OF SHERBURN STREET TO INGERSOLL STREET

SHEET 25 OF 26
CITY DRAWING NUMBER
D-15626