

- CONSTRUCTION NOTES**
1. CONSTRUCT NEW ASPHALT OVERLAY (TYPE 1A)
  2. RENEW EXISTING BARRIER CURB (SD-203A, SD-205)
  3. CONSTRUCT NEW CURB RAMP (SD-229D)
  4. RENEW EXISTING CONCRETE SIDEWALK (SD-228A)
  5. INSTALL NEW DETECTABLE WARNING SURFACE TILE (SD-229E)
  6. REMOVE OR ABANDON EXISTING CATCH PIT AS PER CW 2130
  7. INSTALL NEW BARRIER CURB AND GUTTER INLET C/W CATCH PIT (AP-011, AP-012, SD-023)
  8. INSTALL NEW FRAME AND GRATED COVER C/W CATCH PIT (AP-006, AP-008, SD-023)
  9. INSTALL NEW BARRIER CURB FRAME AND COVER (AP-011, AP-012)
  10. INSTALL NEW FRAME AND SOLID COVER (AP-006, AP-007)
  11. INSTALL NEW FRAME AND GRATED COVER (AP-006, AP-008)
  12. REMOVE EXISTING SAFETY MEDIAN AND CONSTRUCT NEW SAFETY MEDIAN (SD-226B)
  13. ADJUST EXISTING MANHOLE FRAME
  14. RENEW EXISTING CONCRETE ISLAND AND INSTALL NEW SIGN CLAMP

- GENERAL NOTES**
- A. PAVEMENT DIMENSIONS ARE TO BACK OF CURB
  - B. ALL CURB RADII UNDER 15.0m SHALL BE MODIFIED
  - C. ADD 200.000mm TO ALL DESIGN ELEVATION TO OBTAIN GEODETIC ELEVATIONS
  - D. CURB REPLACEMENT AS DIRECTED BY CONTRACT ADMINISTRATOR
  - E. CONTRACTOR TO CONFIRM THE LOCATION OF ALL UTILITIES/SERVICES IN THE FIELD PRIOR TO CONSTRUCTION
  - F. ASPHALT TIE-INS ON APPROACHES TO BE DETERMINED IN THE FIELD BY CONTRACT ADMINISTRATOR
  - G. PAVEMENT REPAIRS SHOWN ARE ONLY A REPRESENTATIVE SAMPLE OF THE TENDER QUANTITIES

**PRELIMINARY**  
NOT TO BE USED FOR  
CONSTRUCTION

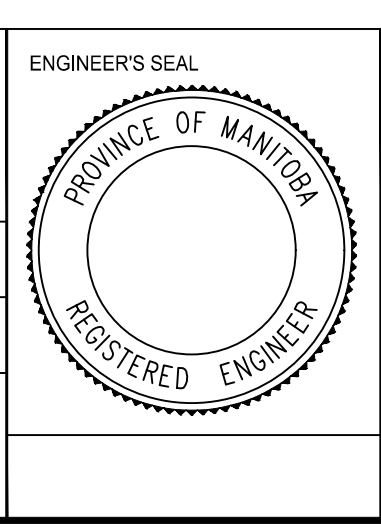
**METRIC**  
WHOLE NUMBERS INDICATE MILLIMETERS  
DECIMALIZED NUMBERS INDICATE METERS

TENDER NO. 1-2020

⊕	HYDRANT	◆	---	LDS/WWS	---	---	---	FENCE	---	---
⊗	VALVE	◆	---	WATERMAIN	---	---	---	CONCRETE	---	---
⊖	CURB STOP	●	---	GAS	---	---	---	CONCRETE SIDEWALK	---	---
○	MANHOLE	●	---	TRAFFIC SIGNALS	---	---	---	ASPHALT	---	---
□	CATCH BASIN	●	---	HYDRO/STREET LIGHT	---	---	---	PAVEMENT CORE	---	---
△	CURB INLET	▲	---	MTS/SHAW	---	---	---	LEGEND - PLAN	PROPOSED	---
○	HYDRO POLE	●	---	CURB RENEWAL	---	---	---	LEGEND - PROFILE	PROPOSED	---
○	LIGHT STANDARD	●	---	PROPERTY LINE	---	---	---	NORTH GUTTER	---	---
○	TRAFFIC SIGNAL POLE	●	---	CURB RAMP	---	---	---	CENTER LINE	---	---
+	SURVEY BAR	+	---	ELEVATIONS	(31.000)	---	---	SOUTH GUTTER	---	---
⊕	GEODETIC BENCH MARK	⊕	---	TREE	---	---	---	---	---	---
---	EXISTING	---	---	---	---	---	---	---	---	---
---	LEGEND - PLAN	---	---	---	---	---	---	---	---	---
---	PROPOSED	---	---	---	---	---	---	---	---	---
---	EXISTING	---	---	---	---	---	---	---	---	---
---	LEGEND - PLAN	---	---	---	---	---	---	---	---	---
---	PROPOSED	---	---	---	---	---	---	---	---	---
---	EXISTING	---	---	---	---	---	---	---	---	---
---	LEGEND - PROFILE	---	---	---	---	---	---	---	---	---
---	PROPOSED	---	---	---	---	---	---	---	---	---

<b>LOCATION APPROVED</b>		B.M. ELEV.	GBM XXX-XXX 2XX.XXX
<b>UNDERGROUND STRUCTURES</b>			
SUPR. U/G STRUCTURES	DATE		
COMMITTEE			
<b>NOTE:</b> LOCATION OF UNDERGROUND STRUCTURES AS SHOWN ARE BASED ON THE BEST INFORMATION AVAILABLE. BUT NO GUARANTEE IS GIVEN THAT ALL EXISTING UTILITIES ARE SHOWN OR THAT THE GIVEN LOCATIONS ARE EXACT. CONFIRMATION OF EXISTENCE AND EXACT LOCATION OF ALL SERVICES MUST BE OBTAINED FROM THE INDIVIDUAL UTILITIES BEFORE PROCEEDING WITH CONSTRUCTION.			
NO.	REVISIONS	DATE	BY
2.	ISSUE FOR TENDER	2020/03/16	R.W.
1.	SUBMIT FOR PLAN APPROVAL	2020/02/20	R.W.

<b>ENGINEERING DIVISION TECHNOLOGY SERVICES BRANCH 106 - 1155 PACIFIC AVE</b>			
DESIGNED BY	J.D.	CHECKED BY	R.W. / M.L.
DRAWN BY	J.D.	APPROVED BY	
HOR. SCALE:	1 : 250	DATE	2020/03/13
VERTICAL:	1 : 10		



**THE CITY OF WINNIPEG**  
PUBLIC WORKS DEPARTMENT

**PARK LANE AVENUE**  
FROM SELKIRK AVENUE TO DEAD-END  
ASPHALT OVERLAY AND ASSOCIATED WORKS  
FROM STA. 2+10 TO STA. 3+30

CITY DRAWING NUMBER  
SE-20-90  
SHEET 21 OF 29

2