

- CONSTRUCTION NOTES**
- MILL EXISTING ASPHALT AND CONSTRUCT NEW ASPHALT OVERLAY (TYPE 1A)
 - RENEW EXISTING BARRIER CURB (SD-203A, SD-205)
 - CONSTRUCT NEW CURB RAMP (SD-229D)
 - RENEW EXISTING CONCRETE SIDEWALK (SD-228A)
 - INSTALL NEW DETECTABLE WARNING SURFACE TILE (SD-229E)
 - REMOVE EXISTING BUS STOP AND CONSTRUCT NEW CONCRETE BUS STOP
 - RE-GRADE SIDEWALK BLOCKS
 - RE-GRADE PAVING STONES
 - ABANDON EXISTING DRAINAGE INLET AS PER CW 2130
 - INSTALL NEW BARRIER CURB AND GUTTER INLET C/W CATCH PIT (AP-011, AP-012, SD-023)
 - INSTALL NEW BARRIER CURB AND GUTTER INLET C/W CATCH BASIN (AP-011, AP-012, SD-024 - 1200)
 - INSTALL NEW FRAME AND SOLID COVER (AP-006, AP-007)
 - INSTALL NEW FRAME AND GRATED COVER (AP-006, AP-008)
 - ADJUST EXISTING CATCH BASIN FRAME
 - ADJUST EXISTING MANHOLE COVER TO GRADE

- GENERAL NOTES**
- PAVEMENT DIMENSIONS ARE TO BACK OF CURB
 - ALL CURB RADII UNDER 15.0m SHALL BE MODIFIED
 - ADD 200.000m TO ALL DESIGN ELEVATION TO OBTAIN GEODETIC ELEVATIONS
 - CURB REPLACEMENT AS DIRECTED BY CONTRACT ADMINISTRATOR
 - CONTRACTOR TO CONFIRM THE LOCATION OF ALL UTILITIES/SERVICES IN THE FIELD PRIOR TO CONSTRUCTION
 - ASPHALT TIE-INS ON APPROACHES TO BE DETERMINED IN THE FIELD BY CONTRACT ADMINISTRATOR
 - PAVEMENT REPAIRS SHOWN ARE ONLY A REPRESENTATIVE SAMPLE OF THE TENDER QUANTITIES

PRELIMINARY
NOT TO BE USED FOR
CONSTRUCTION

METRIC
WHOLE NUMBERS INDICATE MILLIMETERS
DECIMALIZED NUMBERS INDICATE METERS

TENDER NO. 1-2020

⊕	HYDRANT	◆	---	LDS/WWS	---	---	---	FENCE	---
⊗	VALVE	●	---	WATERMAIN	---	---	---	PAVING STONES	---
⊖	CURB STOP	○	---	GAS	---	---	---	CONCRETE	---
○	MANHOLE	●	---	TRAFFIC SIGNALS	---	---	---	CONCRETE SIDEWALK	---
□	CATCH BASIN	□	---	HYDRO/STREET LIGHT	---	---	---	ASPHALT	---
△	CURB INLET	▲	---	MTS/SHAW	---	---	---	PAVEMENT CORE	---
○	HYDRO POLE	●	---	CURB RENEWAL	---	---	---	LEGEND - PLAN	PROPOSED
○	LIGHT STANDARD	●	---	PROPERTY LINE	---	---	---	NORTH GUTTER	---
○	TRAFFIC SIGNAL POLE	●	---	CURB RAMP	---	---	---	CENTER LINE	---
+	SURVEY BAR	+	---	ELEVATIONS	(31.000)	---	---	SOUTH GUTTER	---
⊕	GEODETIC BENCH MARK	⊕	---	TREE	---	---	---	---	---
---	EXISTING	---	---	---	---	---	---	---	---
---	LEGEND - PLAN	---	---	---	---	---	---	---	---
---	---	---	---	---	---	---	---	---	---
---	---	---	---	---	---	---	---	---	---

LOCATION APPROVED

UNDERGROUND STRUCTURES

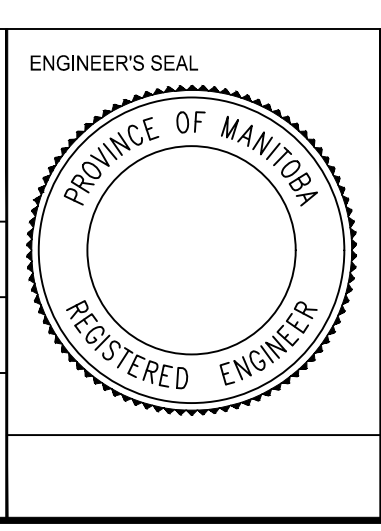
DATE

NOTE:
LOCATION OF UNDERGROUND STRUCTURES AS SHOWN ARE BASED ON THE BEST INFORMATION AVAILABLE. BUT NO GUARANTEE IS GIVEN THAT ALL EXISTING UTILITIES ARE SHOWN OR THAT THE GIVEN LOCATIONS ARE EXACT. CONFIRMATION OF EXISTENCE AND EXACT LOCATION OF ALL SERVICES MUST BE OBTAINED FROM THE INDIVIDUAL UTILITIES BEFORE PROCEEDING WITH CONSTRUCTION.

B.M. ELEV.	GBM XXX-XXX	2XX.XXX
NO.	REVISIONS	DATE
2.	ISSUE FOR TENDER	2020/03/16 R.W.
1.	SUBMIT FOR PLAN APPROVAL	2020/02/20 R.W.

ENGINEERING DIVISION
TECHNOLOGY SERVICES BRANCH
106 - 1155 PACIFIC AVE

DESIGNED BY	J.D.	CHECKED BY	R.W. / M.L.
DRAWN BY	J.D.	APPROVED BY	
HOR. SCALE:	1 : 250	DATE	2020/03/13
VERTICAL:	1 : 10		



THE CITY OF WINNIPEG
PUBLIC WORKS DEPARTMENT

MANITOBA AVENUE
FROM CHUDLEY STREET TO RAILWAY STREET
ASPHALT OVERLAY AND ASSOCIATED WORKS
FROM STA. 6+80 TO STA. 7+30

CITY DRAWING NUMBER
SE-20-88
SHEET 19 OF 29
6