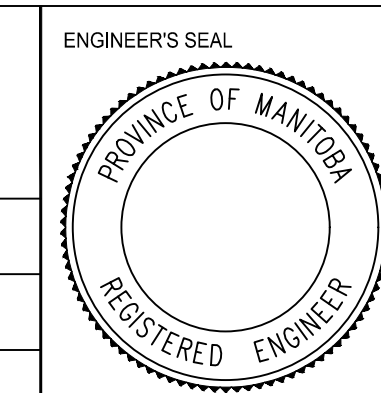


HYDRANT		LDS/WWS		FENCE		LOCATION APPROVED		B.M. ELEV.		ENGINEERING DIVISION		ENGINEER'S SEAL		THE CITY OF WINNIPEG	
⊕	HYDRANT	◆	LDS/WWS	—	FENCE	—	LOCATION APPROVED	B.M.	GBM XXX-XXX	TECHNOLOGY SERVICES BRANCH					
⊗	VALVE	—	WATERMAIN	—	PAVING STONES	—	UNDERGROUND STRUCTURES	ELEV.	2XX.XXX	106 - 1155 PACIFIC AVE			PUBLIC WORKS DEPARTMENT		
⊖	CURB STOP	—	GAS	—	CONCRETE	—				DESIGNED BY J.D.		PROVINCE OF MANITOBA	CITY DRAWING NUMBER		
○	MANHOLE	●	TRAFFIC SIGNALS	—	CONCRETE SIDEWALK	—				CHECKED BY R.W./M.L.		REGISTERED ENGINEER	SE-20-76		
□	CATCH BASIN	■	HYDRO/STREET LIGHT	—	ASPHALT	—				DRAWN BY J.D.			SHEET 7 OF 29		
△	CURB INLET	▲	MTS/SHAW	—	LEGEND - PLAN	—				APPROVED BY			GOVERNMENT AVENUE		
○	HYDRO POLE	●	CURB RENEWAL	—	NORTH GUTTER	—				DATE 2020/03/16		FROM BESANT STREET TO LOUELDA STREET			
○	LIGHT STANDARD	●	PROPERTY LINE	—	CENTER LINE	—				HOR. SCALE: 1 : 250		ASPHALT CONCRETE RECONSTRUCTION AND ASSOCIATED WORKS			
○	TRAFFIC SIGNAL POLE	●	CURB RAMP	—	SOUTH GUTTER	—				VERTICAL: 1 : 10		FROM STA. 1+00 TO STA. 1+90			
⊕	SURVEY BAR	◆	ELEVATIONS	—	NORTH SIDEWALK	—				DATE 2020/03/16		CITY DRAWING NUMBER			
⊕	TEST HOLE	◆	TREE	—	SOUTH SIDEWALK	—						SE-20-76			
EXISTING	LEGEND - PLAN	PROPOSED	EXISTING	LEGEND - PLAN	PROPOSED	EXISTING	LEGEND - PROFILE	PROPOSED				1			

PRELIMINARY
NOT TO BE USED FOR CONSTRUCTION

METRIC
WHOLE NUMBERS INDICATE MILLIMETERS
DECIMALIZED NUMBERS INDICATE METERS

TENDER NO. 1-2020



THE CITY OF WINNIPEG
PUBLIC WORKS DEPARTMENT

GOVERNMENT AVENUE
FROM BESANT STREET TO LOUELDA STREET
ASPHALT CONCRETE RECONSTRUCTION AND ASSOCIATED WORKS
FROM STA. 1+00 TO STA. 1+90

CITY DRAWING NUMBER SE-20-76
SHEET 7 OF 29
1