

- CONSTRUCTION NOTES**
- MILL EXISTING ASPHALT AND CONSTRUCT NEW ASPHALT OVERLAY (TYPE 1A)
 - RENEW EXISTING BARRIER CURB (SD-203A, SD-205)
 - CONSTRUCT NEW CURB RAMP (SD-229D)
 - RENEW EXISTING CONCRETE SIDEWALK (SD-228A)
 - INSTALL NEW DETECTABLE WARNING SURFACE TILE (SD-229E)
 - RE-GRADE SIDEWALK BLOCKS
 - REMOVE EXISTING CONCRETE APPROACH AND RE-GRADE EXISTING BOULEVARD
 - ABANDON EXISTING DRAINAGE INLET AS PER CW 2130
 - INSTALL NEW BARRIER CURB AND GUTTER INLET C/W CATCH PIT (AP-011, AP-012, SD-023)
 - REMOVE EXISTING CATCH BASIN AS PER CW 2130
 - INSTALL NEW BARRIER CURB AND GUTTER INLET C/W CATCH BASIN (AP-011, AP-012, SD-024 - 1200)
 - INSTALL NEW FRAME AND SOLID COVER (AP-006, AP-007)
 - INSTALL NEW FRAME AND GRATED COVER (AP-006, AP-008)
 - ADJUST EXISTING CATCH BASIN FRAME
 - ADJUST EXISTING MANHOLE COVER TO GRADE
 - REMOVE EXISTING CONCRETE SIDEWALK AND RE-GRADE EXISTING BOULEVARD
 - CONSTRUCT NEW CONCRETE SIDEWALK (SD-228A)

- GENERAL NOTES**
- PAVEMENT DIMENSIONS ARE TO BACK OF CURB
 - ALL CURB RADII UNDER 15.0m SHALL BE MODIFIED
 - ADD 200.000m TO ALL DESIGN ELEVATION TO OBTAIN GEODETIC ELEVATIONS
 - CURB REPLACEMENT AS DIRECTED BY CONTRACT ADMINISTRATOR
 - CONTRACTOR TO CONFIRM THE LOCATION OF ALL UTILITIES/SERVICES IN THE FIELD PRIOR TO CONSTRUCTION
 - ASPHALT TIE-INS ON APPROACHES TO BE DETERMINED IN THE FIELD BY CONTRACT ADMINISTRATOR
 - PAVEMENT REPAIRS SHOWN ARE ONLY A REPRESENTATIVE SAMPLE OF THE TENDER QUANTITIES

PRELIMINARY
NOT TO BE USED FOR
CONSTRUCTION

METRIC
WHOLE NUMBERS INDICATE MILLIMETERS
DECIMALIZED NUMBERS INDICATE METERS
TENDER NO. 1-2020

EXISTING	LEGEND - PLAN	PROPOSED	EXISTING	LEGEND - PLAN	PROPOSED	EXISTING	LEGEND - PROFILE	PROPOSED
⊕	HYDRANT	◆	---	LDS/WWS	---	---	FENCE	---
⊗	VALVE	◆	---	WATERMAIN	---	---	CONCRETE	---
⊖	CURB STOP	◆	---	GAS	---	---	CONCRETE SIDEWALK	---
○	MANHOLE	●	---	TRAFFIC SIGNALS	---	---	ASPHALT	---
□	CATCH BASIN	■	---	HYDRO/STREET LIGHT	---	---	PAVEMENT REPAIR FABRIC	---
△	CURB INLET	▲	---	MTS/SHAW	---	---	PAVEMENT CORE	---
⊙	HYDRO POLE	●	---	CURB RENEWAL	---	---	LEGEND - PLAN	PROPOSED
⊙	LIGHT STANDARD	●	---	PROPERTY LINE	---	---	WEST GUTTER	---
⊙	TRAFFIC SIGNAL POLE	●	---	CURB RAMP	---	---	CENTER LINE	---
+	SURVEY BAR	+	---	ELEVATIONS	(31.000)	---	EAST GUTTER	---
⊕	GEODETIC BENCH MARK	⊕	---	TREE	---	---		

LOCATION APPROVED UNDERGROUND STRUCTURES

SUPR. U/G STRUCTURES COMMITTEE DATE

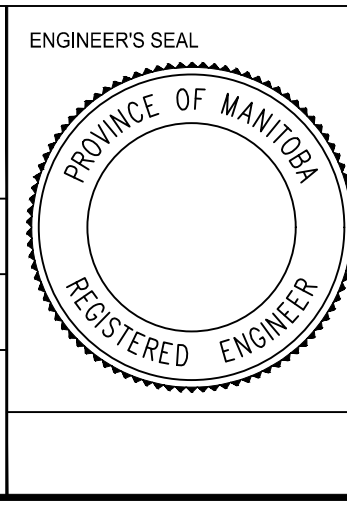
NOTE:
LOCATION OF UNDERGROUND STRUCTURES AS SHOWN ARE BASED ON THE BEST INFORMATION AVAILABLE. BUT NO GUARANTEE IS GIVEN THAT ALL EXISTING UTILITIES ARE SHOWN OR THAT THE GIVEN LOCATIONS ARE EXACT. CONFIRMATION OF EXISTENCE AND EXACT LOCATION OF ALL SERVICES MUST BE OBTAINED FROM THE INDIVIDUAL UTILITIES BEFORE PROCEEDING WITH CONSTRUCTION.

B.M. ELEV.	GBM XXX-XXX 2XX.XXX	DATE	BY

**ENGINEERING DIVISION
TECHNOLOGY SERVICES BRANCH
106 - 1155 PACIFIC AVE**

DESIGNED BY	J.D.	CHECKED BY	R.W. / M.L.
DRAWN BY	J.D.	APPROVED BY	

HOR. SCALE: 1 : 250
VERTICAL: 1 : 10
DATE: 2020/03/16



**THE CITY OF WINNIPEG
PUBLIC WORKS DEPARTMENT**

BESANT STREET
FROM MUNROE AVENUE TO NORTH LIMIT
ASPHALT OVERLAY AND ASSOCIATED WORKS
FROM STA. 4+50 TO STA. 5+70

CITY DRAWING NUMBER
SE-20-74
SHEET 5 OF 29
4