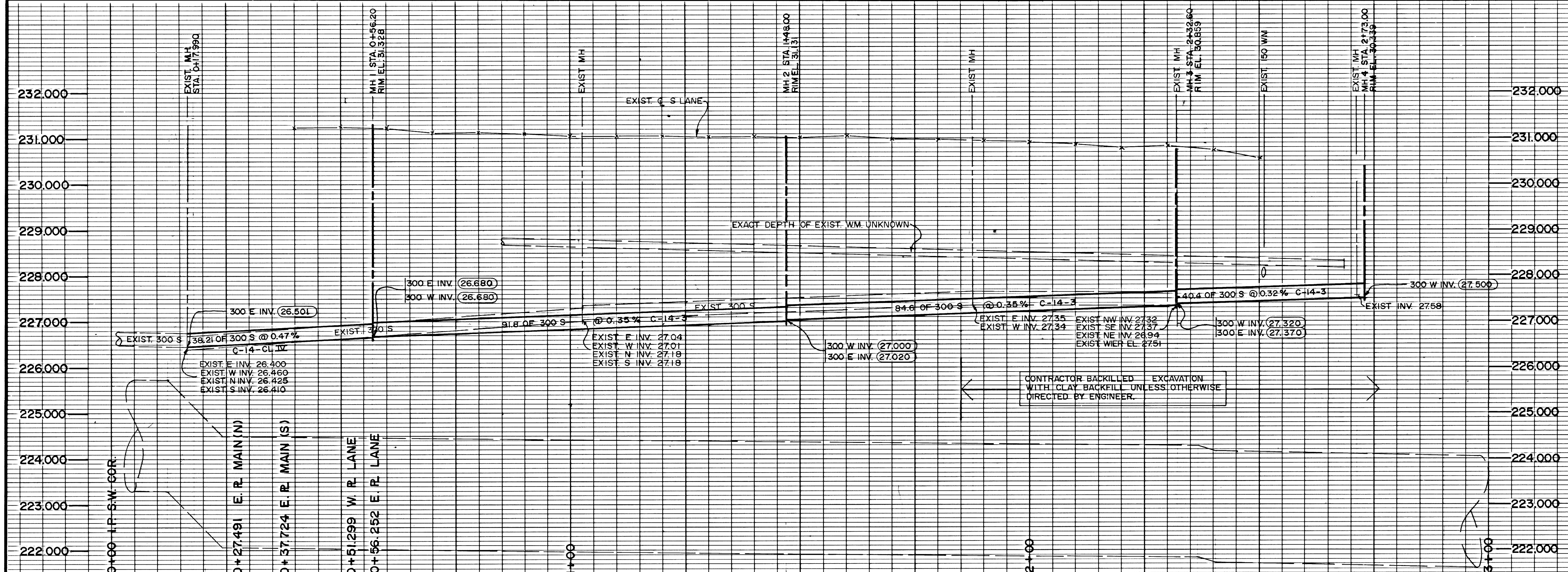
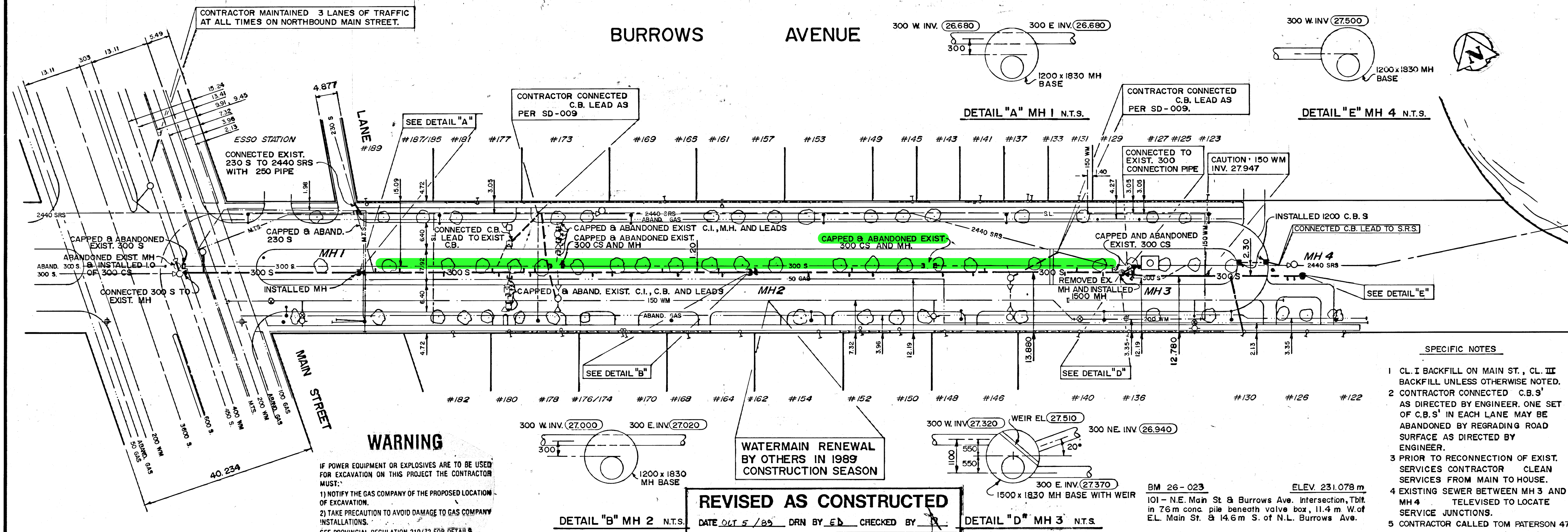


APPENDIX D – REFERENCE DRAWINGS



SEWER SERVICES	
House #	Jct Loc FM MH#1
189	Burrows 5.0 m E
187/185	10.5 m E
182	21.6 m E
181	31.7 m E
180	33.3 m E
177	39.2 m E
178	41.6 m E
173	40.4 m E
176/174	54.8 m E
170	59.2 m E
169	70.9 m E
168	74.1 m E
165	Hyd with 169
164	84.5 m E
161	83.7 m E
162	Hyd with 164
House #	Jct Loc FM MH#2
157	Burrows 1.2 m E
154	13.6 m E
153	Hyd with 149
149	23.4 m E
152	22.7 m E
150	28.3 m E
145	33.8 m E
143	Hyd with 141
148	44.1 m E
141	53.6 m E
146	51.2 m E
137	63.0 m E
133	Hyd with 137
131	74.9 m E
129	Hyd with 127
140	72.0 m E
136	80.7 m E
127	83.1 m E
House #	Jct Loc FM MH#3
130	Burrows 25.0 m E
123	19.8 m E
126	37.9 m E
122	39.5 m E
125	Hyd with 123

35-2409



- GENERAL SEWER RENEWAL NOTES**
- INVERTS OF ALL INTERSECTING PIPES AT M.H.'s WITHIN PROPOSED LIMITS VERIFIED PRIOR TO CONSTRUCTION.
 - 331/303 INDICATES APPROX. DISTANCE OF SEWER CONNECTIONS FROM DOWNSTREAM M.H. CONTRACTOR VERIFIED IN FIELD.
 - ALL EXIST. SEWER CONNECTIONS NOT IN USE ABANDONED. CONTRACTOR DYE TESTED TO ESTABLISH ACTIVE SERVICES.
 - CONTRACTOR VERIFIED DEPTH OF EXISTING WATERMAIN PRIOR TO CONSTRUCTION, AS DIRECTED BY ENGINEER.
 - CONTRACTOR MINIMIZED OPEN TRENCH PIPE INSTALLATION BY AUGERING WHERE REQUIRED OR AS DIRECTED BY ENGINEER.
 - RIM ELEVATIONS OF MANHOLES ARE APPROXIMATE AND ARE SET IN THE FIELD BY ENGINEER.
 - EXISTING SEWERS AND C.B. LEADS UNDER PAVEMENT ARE ABANDONED AND FILLED WITH NON-SHRINKABLE GROUT, AS DIRECTED BY ENGINEER.
 - PIPE CLASSES SHOWN ARE FOR CONCRETE PIPE UNLESS OTHERWISE SPECIFIED.
 - CONTRACTOR BENCHED MANHOLES IN FIELD AS DIRECTED BY ENGINEER.
- SPECIFIC NOTES**
- CL. I BACKFILL ON MAIN ST., CL. III BACKFILL UNLESS OTHERWISE NOTED.
 - CONTRACTOR CONNECTED C.B.'S AS DIRECTED BY ENGINEER. ONE SET OF C.B.'S IN EACH LANE MAY BE ABANDONED BY REGRADE ROAD SURFACE AS DIRECTED BY ENGINEER.
 - PRIOR TO RECONNECTION OF EXIST. SERVICES CONTRACTOR CLEAN SERVICES FROM MAIN TO HOUSE.
 - EXISTING SEWER BETWEEN MH 3 AND MH 4 TELEVIEWED TO LOCATE SERVICE JUNCTIONS.
 - CONTRACTOR CALLED TOM PATERSON 477-0295 PRIOR TO MTS RECONNECTION

150 mm W.M.	WATERMAIN	150 mm W.M.	HYDRO
300 mm L.D.S.	LAND DRAINAGE SEWER	300 mm L.D.S.	M.T.S.
250 mm W.W.S.	WASTE WATER SEWER	250 mm W.W.S.	CONCRETE
○	MANHOLE	○	ASPHALT
□	CATCH BASIN	□	PROPERTY LINE
▽	CURB INLET	▽	SURVEY BAR
+	JUNCTIONS	+	CURB STOP
—	CULVERT	—	C.B. LEAD
—	GAS	—	COMBINED SEWER
EXISTING	LEGEND-PLAN	PROPOSED	LEGEND-PLAN
EXISTING	LEGEND-PROFILE	PROPOSED	LEGEND-PROFILE

REVISAS AS CONSTRUCTED

DATE OUT 5/89 DRN BY ED CHECKED BY [Signature]

LOCATION APPROVED UNDERGROUND STRUCTURES

DATE: 5/10/89

NOTE:
LOCATION OF UNDERGROUND STRUCTURES AS SHOWN ARE BASED ON THE BEST INFORMATION AVAILABLE BUT NO GUARANTEE IS GIVEN THAT ALL EXISTING UTILITIES ARE SHOWN OR THAT THE GIVEN LOCATIONS ARE EXACT. CONFIRMATION OF EXISTENCE AND EXACT LOCATION OF ALL SERVICES MUST BE OBTAINED FROM THE INDIVIDUAL UTILITIES BEFORE PROCEEDING WITH CONSTRUCTION.

SOLMUNDSON ENGINEERING GROUP

DESIGNED BY D.G. CHECKED BY RA. A.T.

DRAWN BY K.T. MF APPROVED BY [Signature]

HOR. SCALE: 1:500
VERTICAL: 1:50

RELEASED FOR CONSTRUCTION [Signature]

DATE: FEBRUARY, 1989

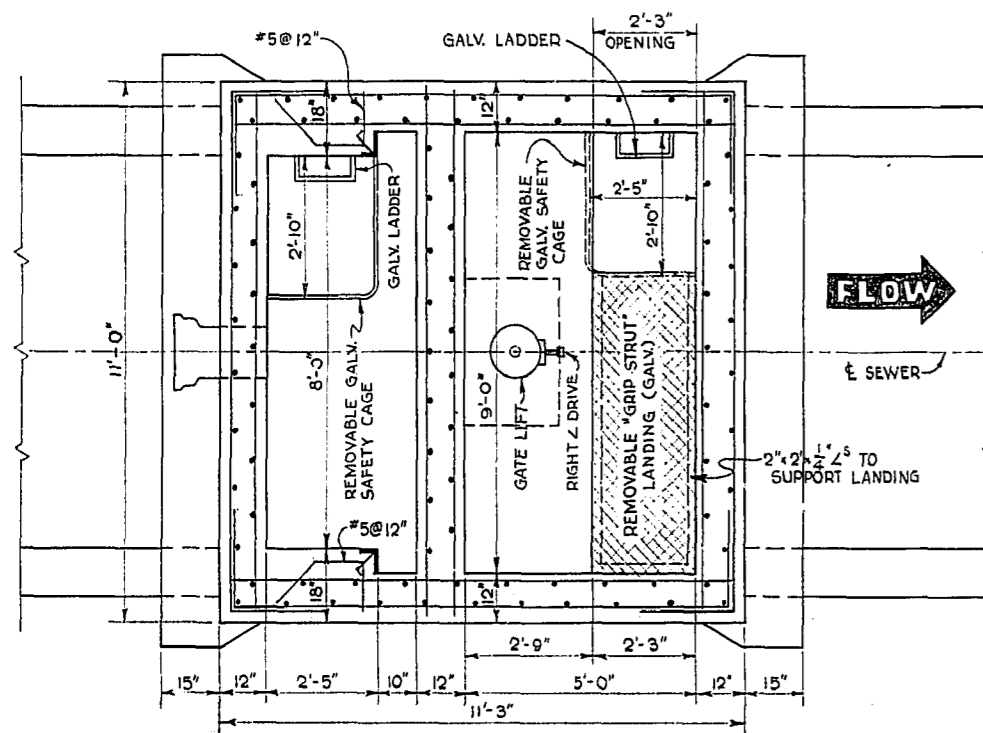
CONSULTANT DRAWING NO. 032-012 05

THE CITY OF WINNIPEG WORKS AND OPERATIONS DIVISION DISTRICT 3

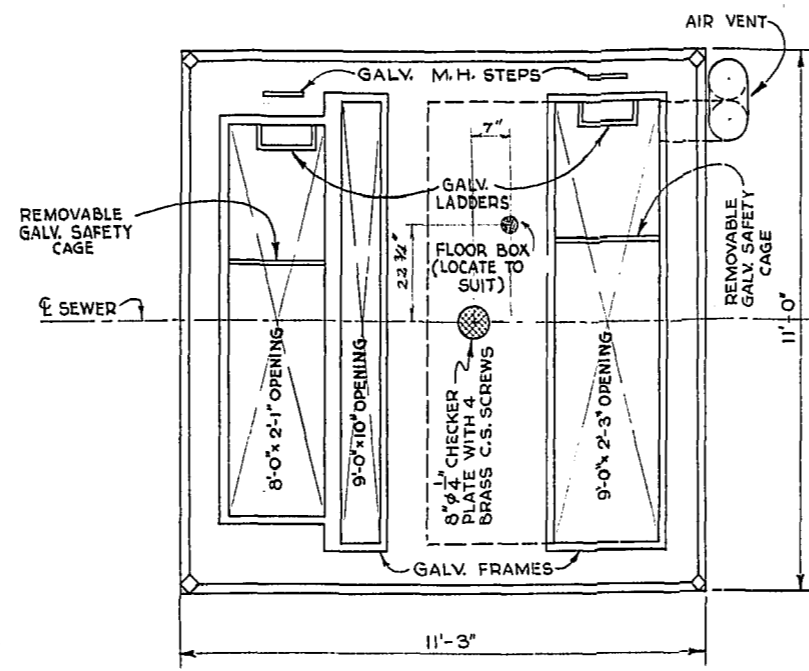
COMBINED SEWER RENEWAL ON **BURROWS AVENUE** FROM MAIN STREET TO RED RIVER

CITY DRAWING NUMBER SHEET 5 OF 7

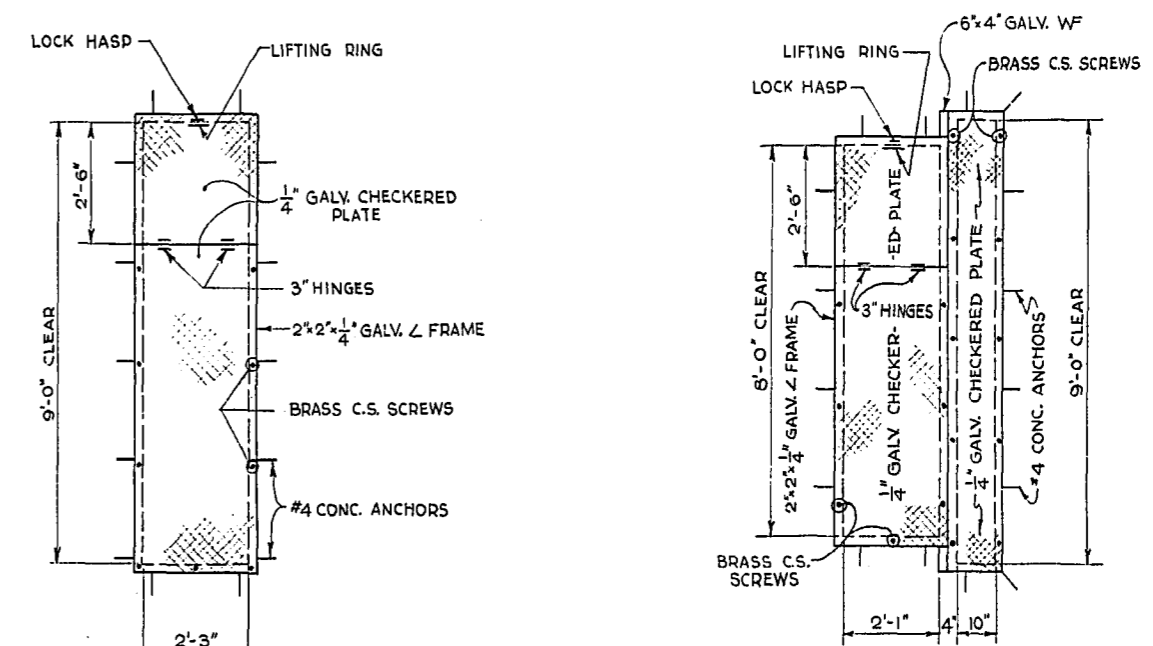
35-2409



SECTION "C-C"

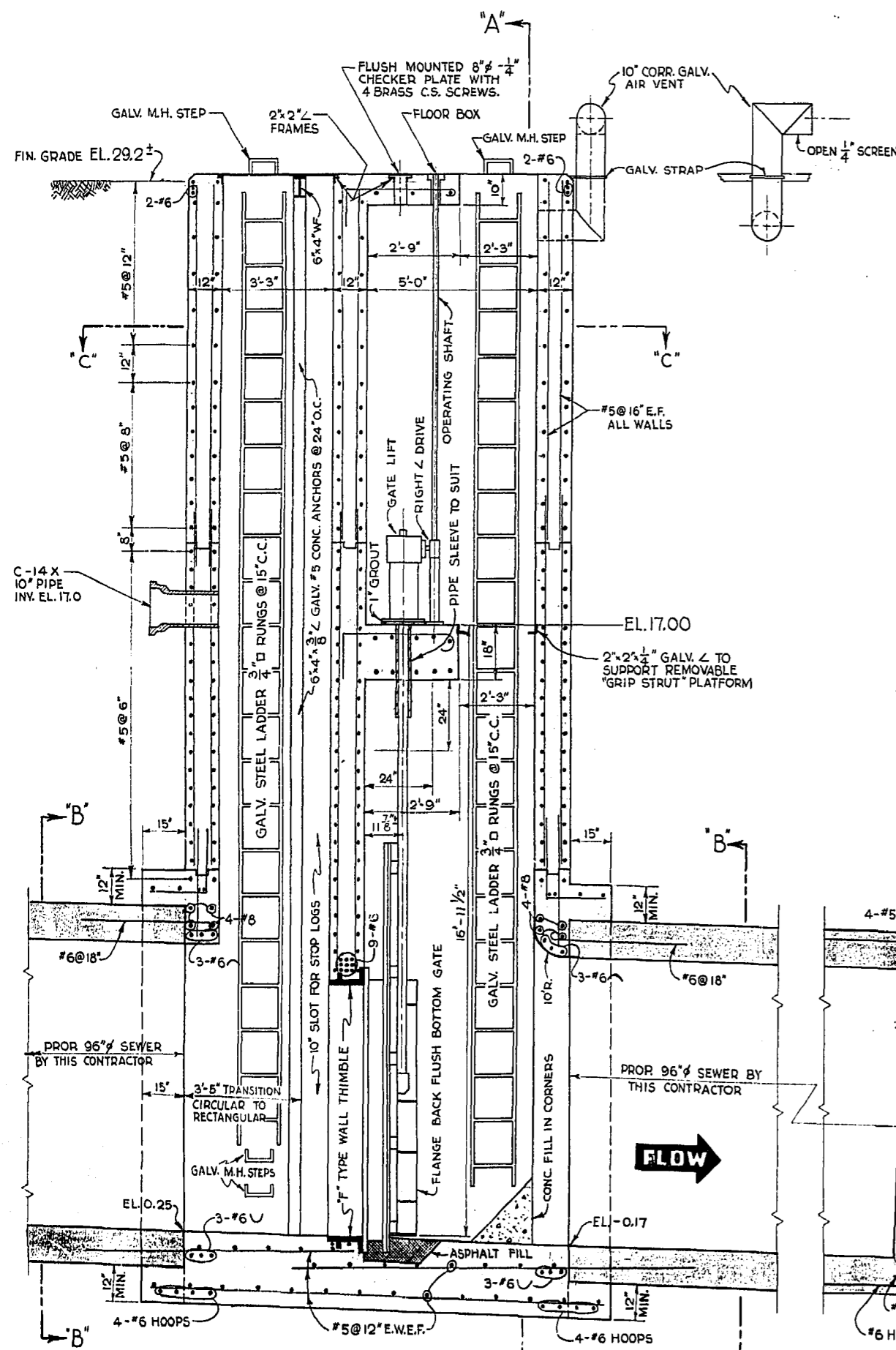


TOP PLAN

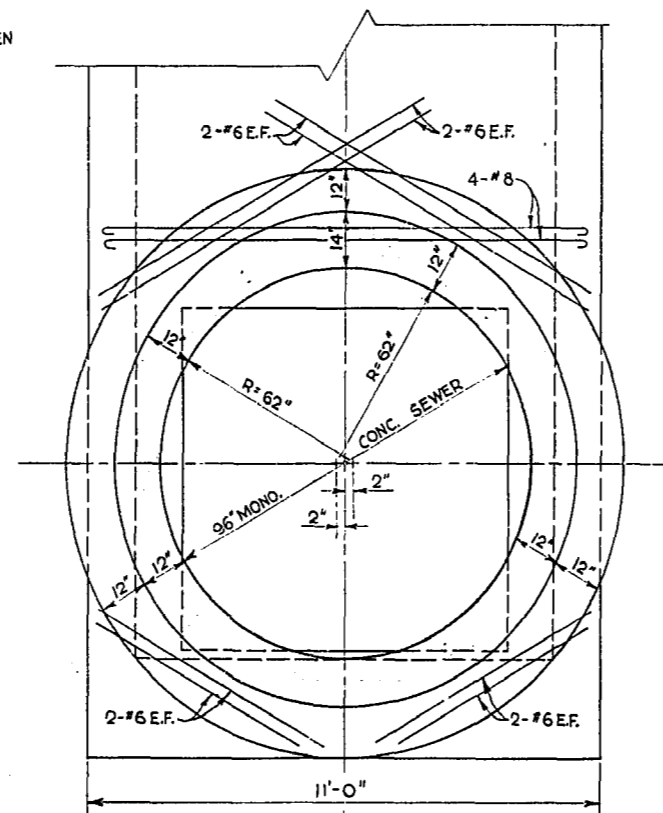


HATCH COVERS & FRAMES

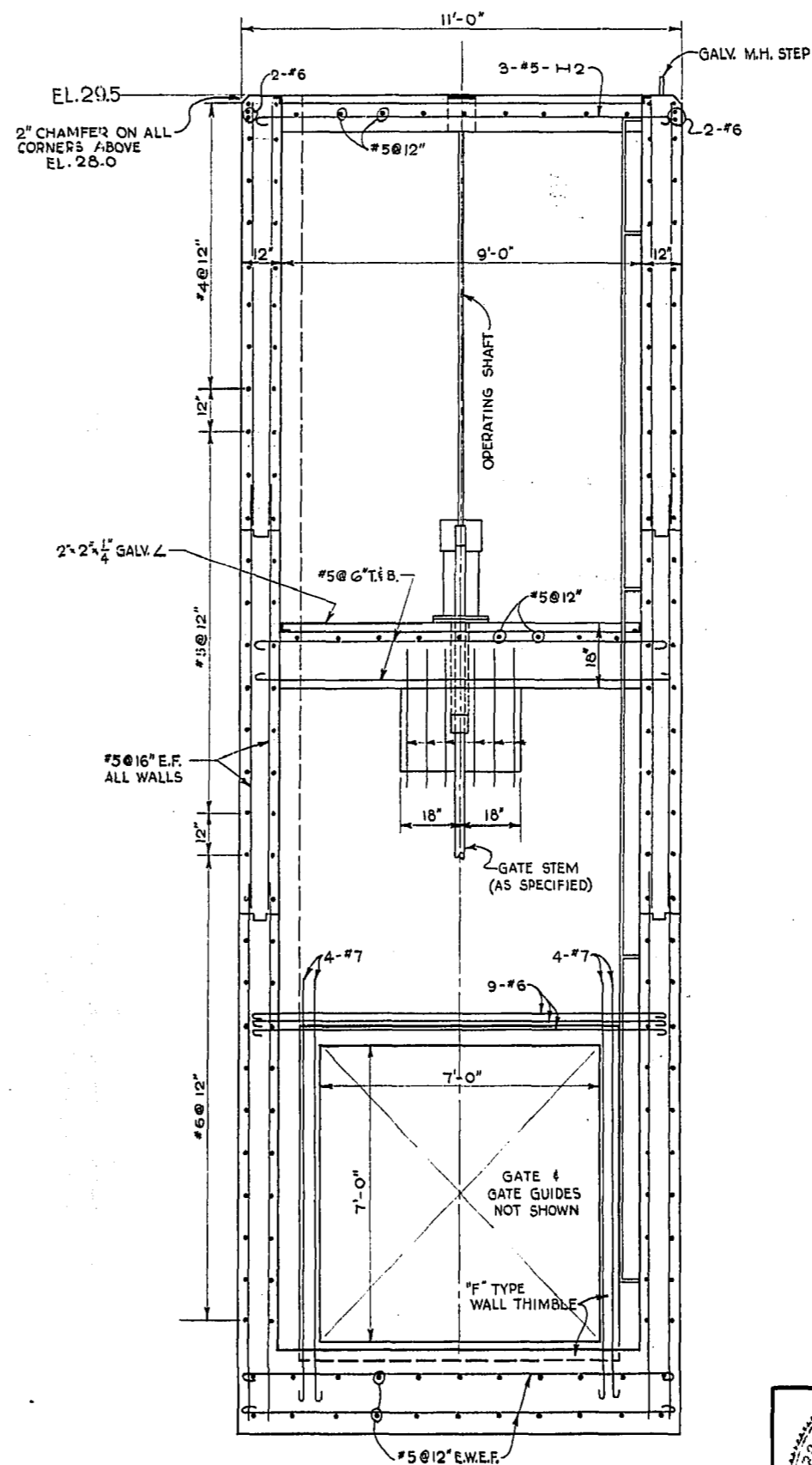
NOTE: ALL COVERS TO BE FLUSH WITH TOP OF CONCRETE AT EL. 29.50



SECTIONAL ELEVATION



SECTION "B-B"



SECTION "A-A"

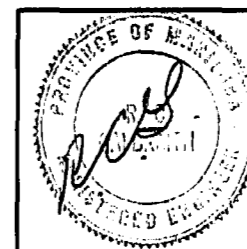
NOTES

1. ALL MISC. METAL TO BE HOT DIPPED GALVANIZED AFTER FABRICATION.
2. ALL STEEL 2 1/2" CLEAR
3. FOR LOCATION SEE DWG. SC15926

REVISED AS CONSTRUCTED
 BY DATE
 CHECKED BY DATE

METRO APPROVAL REC'D.
 APPROVED UNDER BY LAW 15 NOV 5/71
 STREETS & TRAFFIC NOV 5/71
 DATE

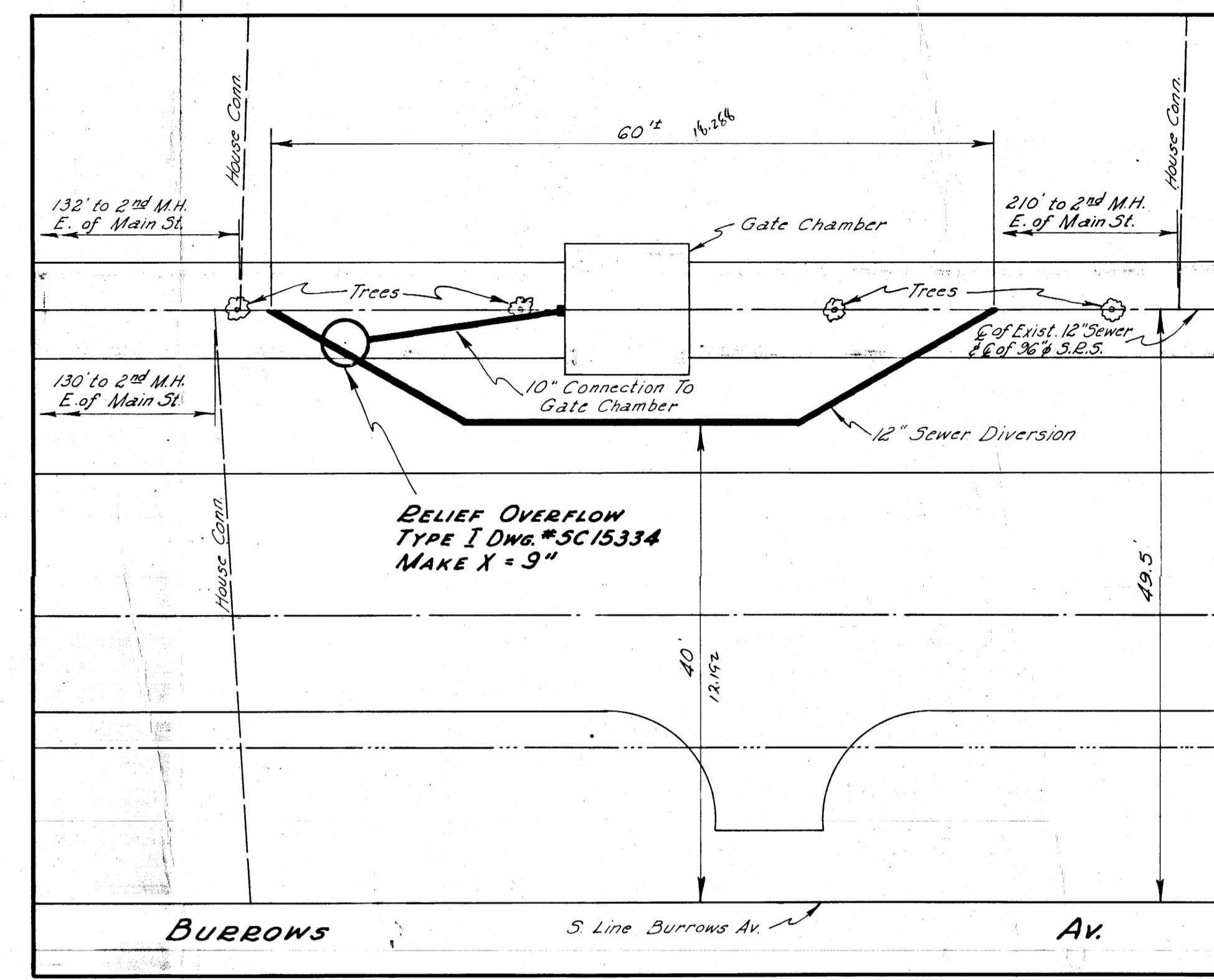
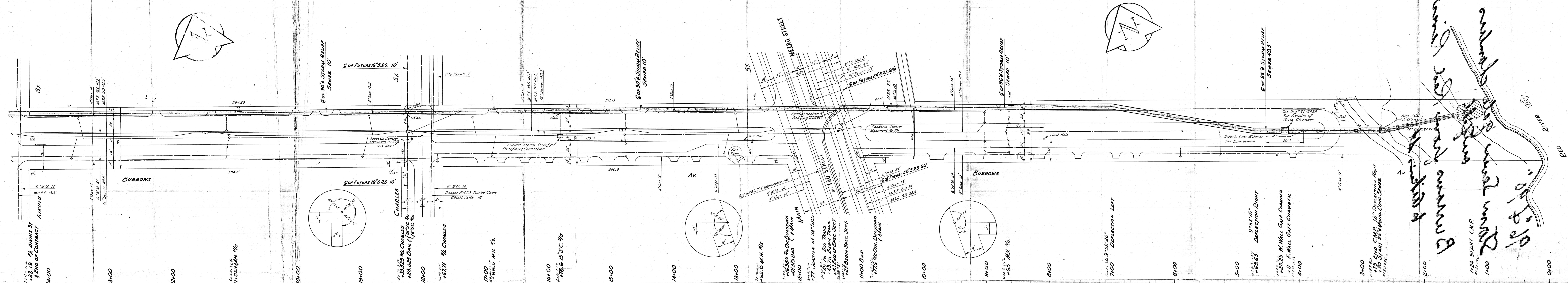
FILE B-13-K



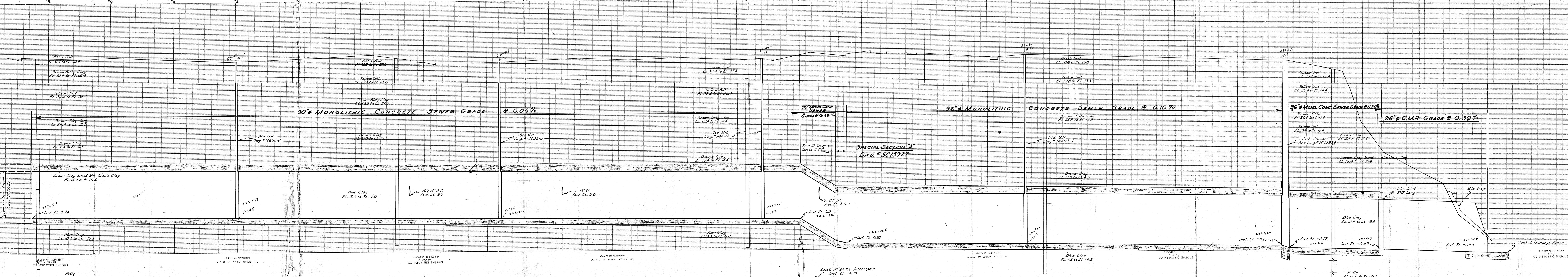
DETAILS OF BURROWS AV. STORM RELIEF GATE CHAMBER

CITY OF WINNIPEG
 ENGINEERING DEPARTMENT
 W. D. HURST, CITY ENGINEER
 J. B. STRIOWSKI, DEPUTY CITY ENGINEER

DRAWN BY DATE OCT 20/71
 TRACED BY
 CHECKED BY
 APPROVED BY
 SCALE 3/8" = 1'-0"
 DRAWING NO. SC15926



NOTE:
 STA. 1+00 = BAR 5/8 COR.
 BURROWS & MAIN



THE CONTRACTOR'S ATTENTION IS DRAWN TO THE FACT THAT THE LOCATION OF THE SEWER LINES IS BASED ON THE DATA AS SHOWN ON THIS PLAN. THE CONTRACTOR SHALL BE RESPONSIBLE FOR OBTAINING THE NECESSARY PERMITS AND FOR VERIFYING THE DATA AS SHOWN ON THIS PLAN.

DYING COMMISSION PROVISIONAL APPROVAL REC'D.
 Date: Oct. 25, 1971

LOCATION APPROVED
 ENGINEERING STRUCTURES COMMITTEE

METRO APPROVAL REC'D.
 Date: Nov. 15, 1971

CITY OF MANASSAS APPROVAL REC'D.
 Date: Dec. 15, 1971

96" & 30" MONOLITHIC CONC. STORM RELIEF SEWER, GATE CHAMBER & OUTFALL IN BURROWS AV. FROM THE RED RIVER TO AIKINS ST.

DESIGNED BY: [Signature]
 CHECKED BY: [Signature]
 APPROVED BY: [Signature]

Scale: Plan 1"=40'
 Profile 1"=10'

PROJECT NO. SC 15926

DATE: 12-20-71

ON LARDER