

**NEW PARTIAL FLOOR PLAN**

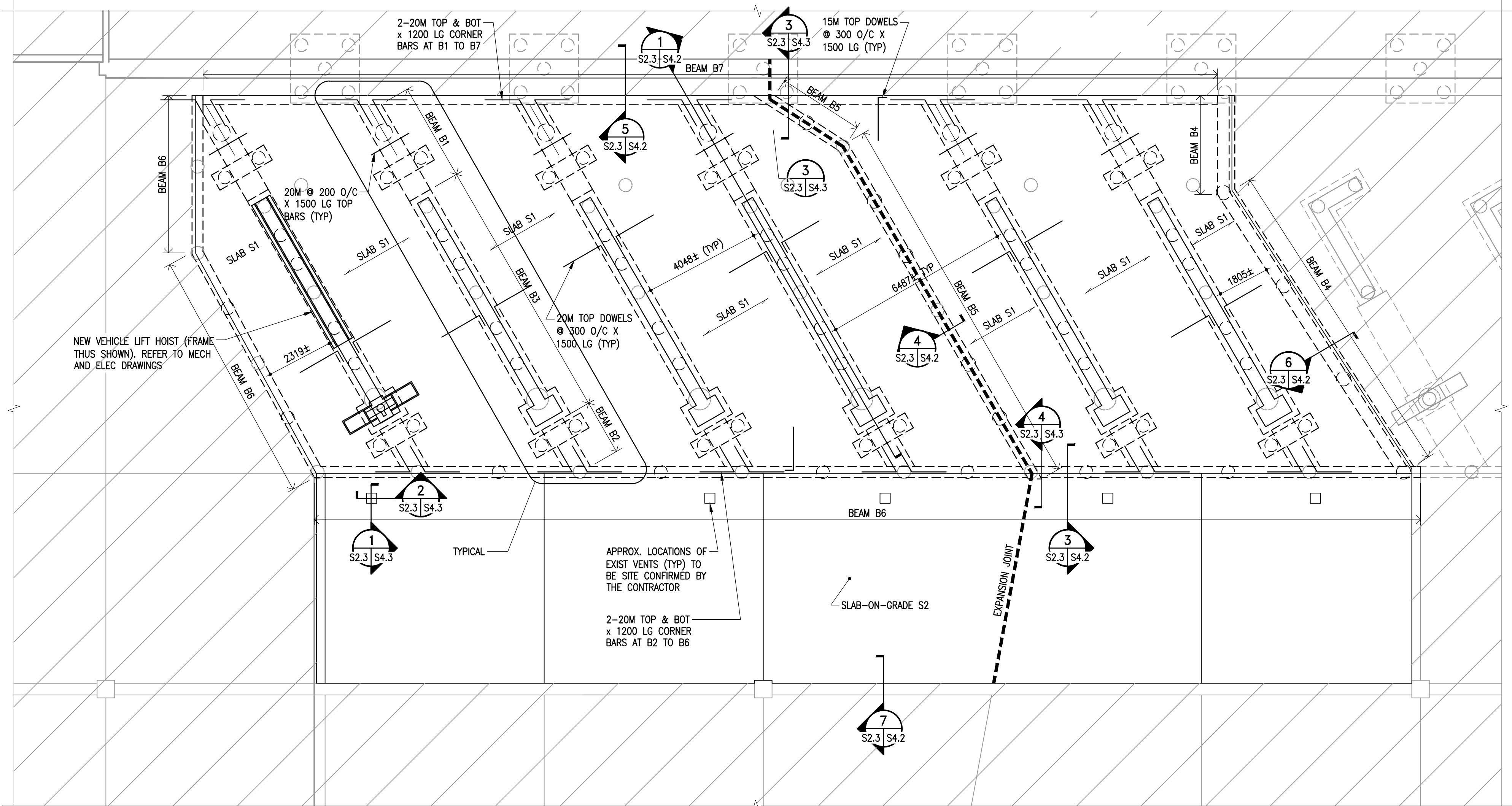
1 : 300

**DESIGN LOADS**

FLOOR LL = 12.0 kPa  
 FLOOR DL = 4.8 kPa  
 HOIST LL = 112 kPa

**LEGEND**

Ⓡ - HOIST NUMBER



**1 NEW PHASE 1 PLAN**  
 S2.3 | S2.3 | 1:100

BEAM SCHEDULE		
BEAM	BEAM SIZE	BEAM REINFORCING
B1	830 x 660	6-20M BOT, 4-20M TOP 10M STIRRUPS @ 250 O/C
B2	830 x 400	6-20M BOT, 4-20M TOP 10M STIRRUPS @ 300 O/C
B3	900 x 300	6-20M TOP & BOT 10M STIRRUPS @ 300 O/C
B4	400 x 600	4-20M TOP & BOT 10M STIRRUPS @ 300 O/C C/W 200 x 200 CORBEL R/W 2-20M LONGITUDINAL & 15M TIES @ 200 O/C
B5	400 x 660	4-20M TOP & BOT 10M STIRRUPS @ 300 O/C
B6	400 x 406	4-20M TOP & BOT 10M STIRRUPS @ 300 O/C C/W ___ x ___ CORBEL R/W 2-20M AND 10M TIES @ 300 O/C
B7	400 x 660	4-20M TOP & BOT 10M STIRRUPS @ 300 O/C

SLAB SCHEDULE		
SLAB	SLAB THICKNESS	SLAB REINFORCING
S1	200 SLAB	20M @ 150 O/C BOT 15M @ 300 O/C TEMP
S2	200 SLAB-ON-GRADE ON 300 COMPACTED FILL	10M @ 300 O/C E.W. TOP & BOT

The General Contractor shall check & verify all dimensions and report any errors or omissions to the designers.

No.	Date	Issue/Revision	By
0	2019-08-21	ISSUED FOR BID	IM

Consultant

300-275 Carlton Street  
 Winnipeg, Manitoba R3C 5R6  
 T 204-943-7501  
 F 204-943-7507



**Crosier Kilgour  
 & Partners Ltd.**  
 CONSULTING STRUCTURAL ENGINEERS

Project  
**WINNIPEG TRANSIT  
 GARAGE BUILDING**  
 HOIST REPLACEMENT PROGRAM  
 421 OSBORNE STREET  
 WINNIPEG, MANITOBA

Sheet Title  
**NEW PARTIAL FLOOR PLAN,  
 NEW PHASE 1 PLAN & SCHEDULES**

File	2018-1170	Date	2019-08-21
Design	IM	Drawn	JSR
Revision		Sheet No.	

0 S2.3