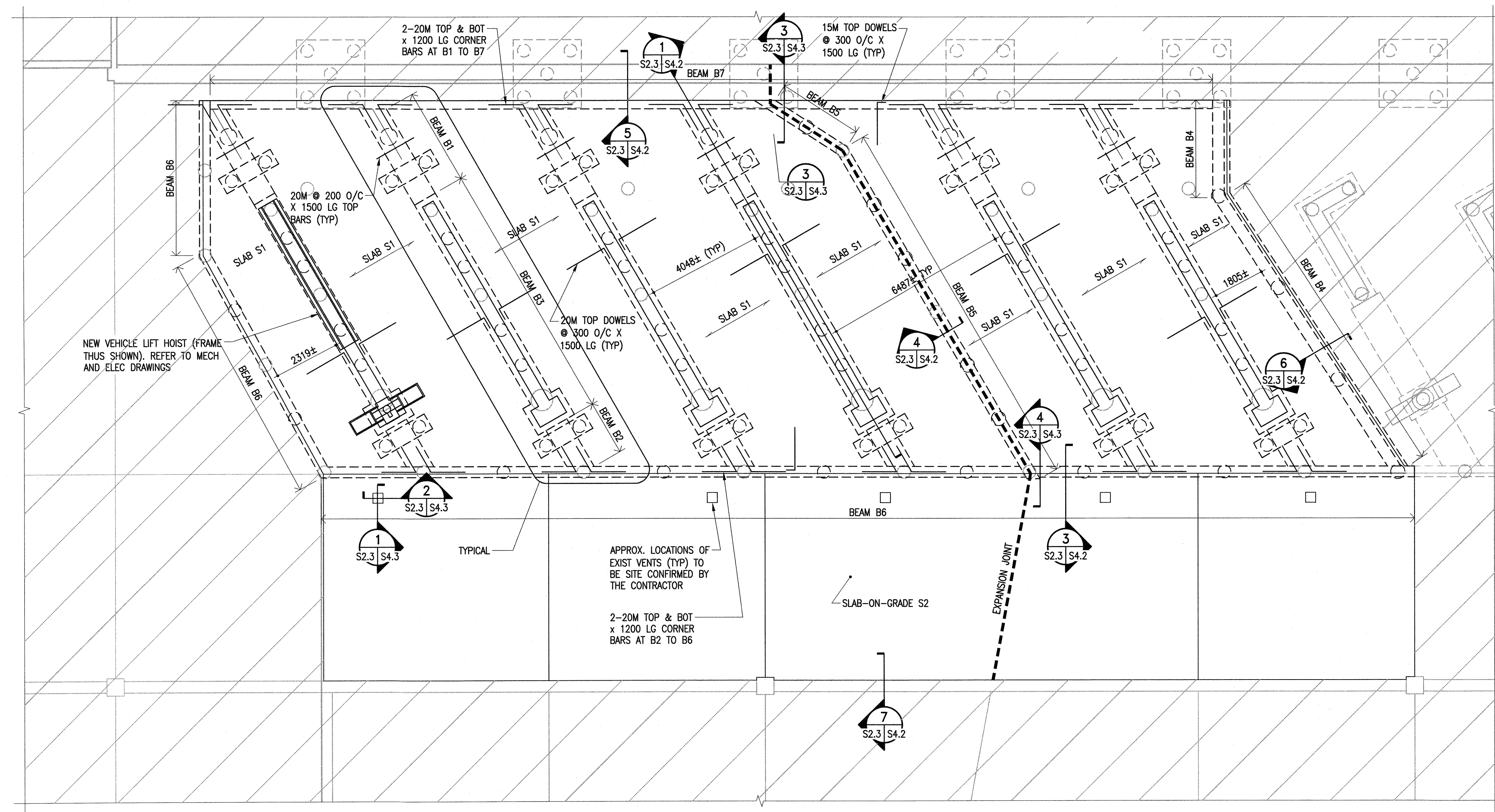


NEW PARTIAL FLOOR PLAN
1 : 300

DESIGN LOADS
 FLOOR LL = 12.0 kPa
 FLOOR DL = 4.8 kPa
 HOIST LL = 112 kPa

LEGEND
 Ⓡ - HOIST NUMBER



1 NEW PHASE 1 PLAN
S2.3 S2.3 1:100

BEAM SCHEDULE		
BEAM	BEAM SIZE	BEAM REINFORCING
B1	830 x 660	6-20M BOT, 4-20M TOP 10M STIRRUPS @ 250 O/C
B2	830 x 400	6-20M BOT, 4-20M TOP 10M STIRRUPS @ 300 O/C
B3	900 x 300	6-20M TOP & BOT 10M STIRRUPS @ 300 O/C
B4	400 x 600	4-20M TOP & BOT 10M STIRRUPS @ 300 O/C C/W 200 x 200 CORBEL R/W 2-20M LONGITUDINAL & 15M TIES @ 200 O/C
B5	400 x 660	4-20M TOP & BOT 10M STIRRUPS @ 300 O/C
B6	400 x 406	4-20M TOP & BOT 10M STIRRUPS @ 300 O/C C/W ___ x ___ CORBEL R/W 2-20M AND 10M TIES @ 300 O/C
B7	400 x 660	4-20M TOP & BOT 10M STIRRUPS @ 300 O/C

SLAB SCHEDULE		
SLAB	SLAB THICKNESS	SLAB REINFORCING
S1	200 SLAB ON 150 VOIDFORM	20M @ 150 O/C BOT 15M @ 300 O/C TEMP
S2	200 SLAB-ON-GRADE ON 200 CRUSHED LIMESTONE COURSE COMPACTED TO 100% MMD C/W 10MIL POLY	10M @ 300 O/C E.W. TOP & BOT

The General Contractor shall check & verify all dimensions and report any errors or omissions to the designers.

No.	Date	Issue/Revision	By
1	2019-08-30	ISSUED FOR CONSTRUCTION	IM
0	2019-08-21	ISSUED FOR BID	IM

**ENGINEERS
GEOLOGISTS
MANITOBA**
 Certificate of Authorization
 Crosier Kilgour & Partners Ltd.
 No. 235



Consultant

300-275 Carlton Street
 Winnipeg, Manitoba R3C 5R6
 T 204-943-7501
 F 204-943-7507



Project
**WINNIPEG TRANSIT
 GARAGE BUILDING**
 HOIST REPLACEMENT PROGRAM
 421 OSBORNE STREET
 WINNIPEG, MANITOBA

Sheet Title
**NEW PARTIAL FLOOR PLAN,
 NEW PHASE 1 PLAN & SCHEDULES**

File	2018-1170	Date	2019-08-30
Design	IM	Drawn	JSR

Revision	1	Sheet No.	S2.3
----------	---	-----------	------