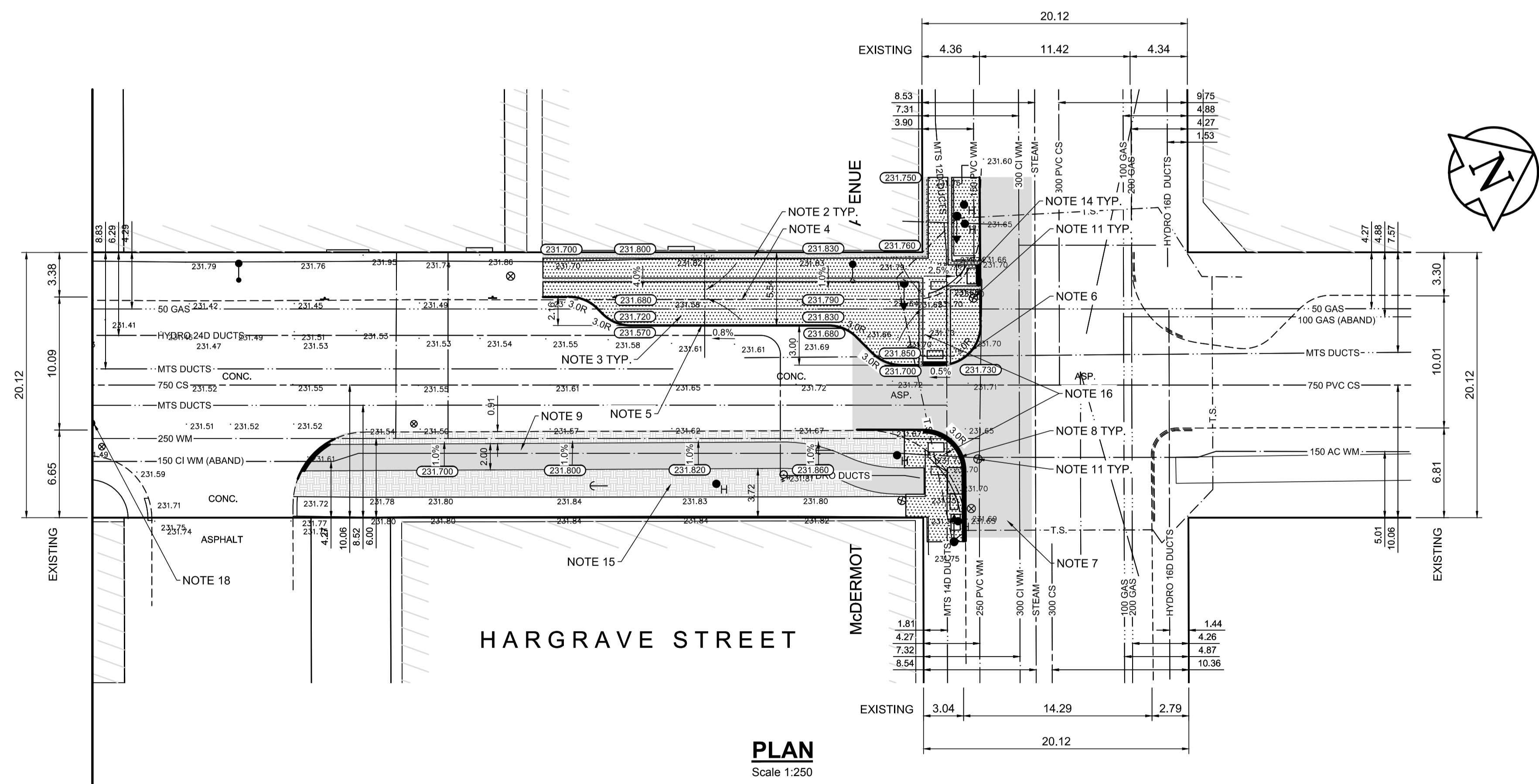


- REFERENCE NOTES**
- PAVEMENT DIMENSIONS ARE TO BACK OF CURB
  - PROPERTY LINES OBTAINED FROM THE CITY OF WINNIPEG L.B.I.S., AND SCALE FACTOR WAS NOT APPLIED
  - CATCHBASIN CONNECTIONS TO SEWER DESIGNED TO MAINTAIN PRE-CONSTRUCTION CAPACITY BY CATCH BASIN LEAD RESTRICTION AS INDICATED ON THE DRAWINGS. ADDITIONAL OR MODIFIED CONNECTIONS TO THE SEWER SYSTEM BEYOND THOSE INDICATED ON THE DRAWINGS REQUIRE REVIEW AND WRITTEN APPROVAL BY THE CONTRACT ADMINISTRATOR.



- CONSTRUCTION NOTES**
- REMOVE EXISTING PAVEMENT AND CONSTRUCT NEW 200mm REINFORCED CONCRETE PAVEMENT
  - RENEW EXISTING 100mm CONCRETE SIDEWALK c/w PAVING STONE BAND (SEE DETAIL 4, CT-03)
  - CONSTRUCT NEW 100mm CONCRETE SIDEWALK c/w PAVING STONE BAND (SEE DETAIL 4, CT-03)
  - REMOVE EXISTING CURB
  - CONSTRUCT NEW CONCRETE BARRIER CURB (150mm HT. DOWELLED)
  - CONSTRUCT NEW CONCRETE MODIFIED BARRIER CURB (175mm HT. DOWELLED)
  - REMOVE EXISTING ASPHALT PAVEMENT AND REPLACE WITH NEW ASPHALT OVERLAY TYPE 1A (50-100mm AVG. THICKNESS)
  - CONSTRUCT NEW CURB RAMP (10mm HT. INTEGRAL/MONOLITHIC)
  - CONSTRUCT NEW 2.0m WIDTH ASPHALT BIKE PATH (SEE DETAIL A)
  - ADJUST EXISTING CATCHBASIN/MANHOLE FRAME AND COVER
  - ADJUST EXISTING WATERMAIN VALVE BOX TO GRADE
  - INSTALL NEW 50mm CAST IRON RISER RING
  - ADJUST EXISTING CURB STOP TO GRADE
  - INSTALL DETECTABLE SURFACE WARNING TILE
  - RE-GRADE TOPSOIL AND INSTALL NEW SOD / SEED
  - REMOVE EXISTING PAVEMENT
  - INSTALLATION OF PRECAST ADJUSTABLE BIKE LANE CURB WITH DRAINAGE CHANNEL c/w NEOPRENE SPACERS AND 450mm 15M DEFORMED BAR, 2 EACH
  - INSTALLATION OF PRECAST ADJUSTABLE BIKE LANE CURB END UNIT c/w NEOPRENE SPACERS AND 450mm 15M DEFORMED BAR, 2 EACH

**APEGM**  
Certificate of Authorization  
AECOM Canada Ltd.  
No. 4671 Date: \_\_\_\_\_

**METRIC**  
WHOLE NUMBERS INDICATE MILLIMETRES  
DECIMALIZED NUMBERS INDICATE METRES

150mm W.M.	WATERMAIN	150mm W.M.	HYDRO	X	PROFILE	LOCATION APPROVED
300mm L.D.S.	LAND DRAINAGE SEWER	300mm L.D.S.	M.T.S.	□	WEST GUTTER	UNDERGROUND STRUCTURES
250mm W.W.S.	WASTEWATER SEWER	250mm W.W.S.	CONCRETE	○	EAST GUTTER	
○	MANHOLE	+	ASPHALT	◇	N/W PROPERTY LINE	
□	CATCH BASIN	●	PROPERTY LINE	○	S/E PROPERTY LINE	
▽	CATCH PIT	⊕	SURVEY BAR			
↑	TRAFFIC SIGNAL POLE	⊙	ELEVATION (35.750)			
↑	STREET LIGHT	⊙	TREE			
↑	GAS	⊙	SIDEWALK RAMP			
EXISTING	LEGEND - PLAN	PROPOSED	EXISTING	LEGEND - PLAN	PROPOSED	EXISTING
EXISTING	LEGEND - PROFILE	PROPOSED	EXISTING	LEGEND - PROFILE	PROPOSED	EXISTING

**NOTE:**  
LOCATION OF UNDERGROUND STRUCTURES AS SHOWN ARE BASED ON THE BEST INFORMATION AVAILABLE. BUT NO GUARANTEE IS GIVEN THAT ALL EXISTING UTILITIES ARE SHOWN OR THAT THE GIVEN LOCATIONS ARE EXACT. CONFIRMATION OF EXISTENCE AND EXACT LOCATION OF ALL SERVICES MUST BE OBTAINED FROM THE INDIVIDUAL UTILITIES BEFORE PROCEEDING WITH CONSTRUCTION.

B.M. 38 - 035	ELEV. 232.286	S.W. Cor. Notre Dame Ave. & Hargrave St., T.M. N. Conc. found. No. 440 Hargrave St., 1m W. & 0.3 m below Tyndall Stone of N.E. Cor. of Bldg.
0	ISSUED FOR TENDER	2019/07/26 TLF
NO.	REVISIONS	DATE BY

**AECOM**

DESIGNED BY	TLF	CHECKED BY	TLF
DRAWN BY	RAM	APPROVED BY	
HOR. SCALE:	1:250	RELEASED FOR CONSTRUCTION BY:	
VERTICAL:	1:10		
0	ISSUED FOR TENDER	2019/07/26	TLF
NO.	REVISIONS	DATE	BY

**ENGINEER'S SEAL**  
PROVINCE OF MANITOBA  
T.L. FINDLAY  
Member  
23820  
REGISTERED PROFESSIONAL ENGINEER

**THE CITY OF WINNIPEG**  
PUBLIC WORKS DEPARTMENT  
ENGINEERING DIVISION

2018 PARKING AND STREET ENHANCEMENTS PROGRAM  
WINNIPEG EXCHANGE DISTRICT

PAVEMENT GRADING PLAN  
HARGRAVE STREET  
NOTRE DAME AVENUE TO McDERMOT AVENUE

CITY DRAWING NUMBER  
SHEET 01 OF 05

CONSULTANT DRAWING NO.  
CT-01