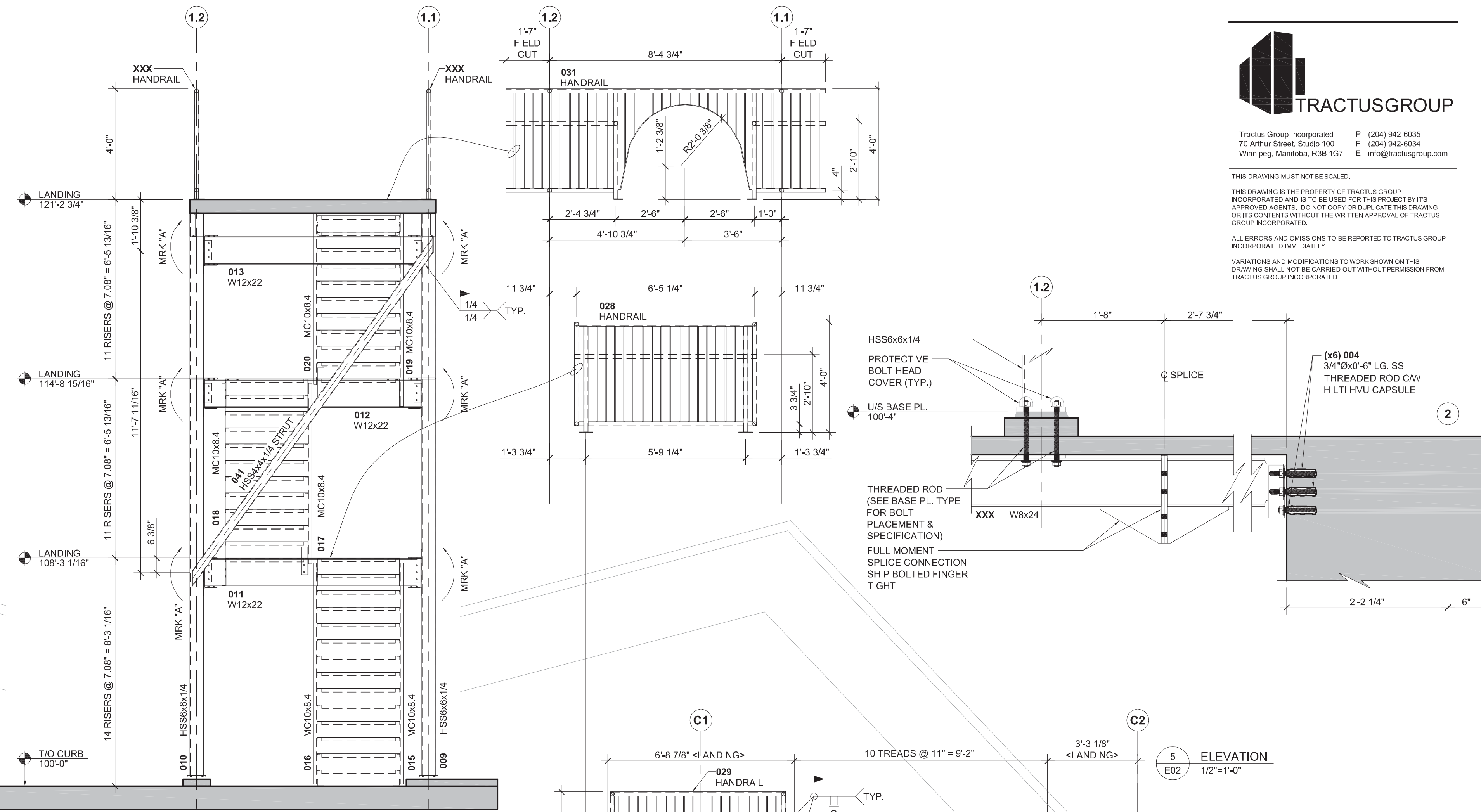
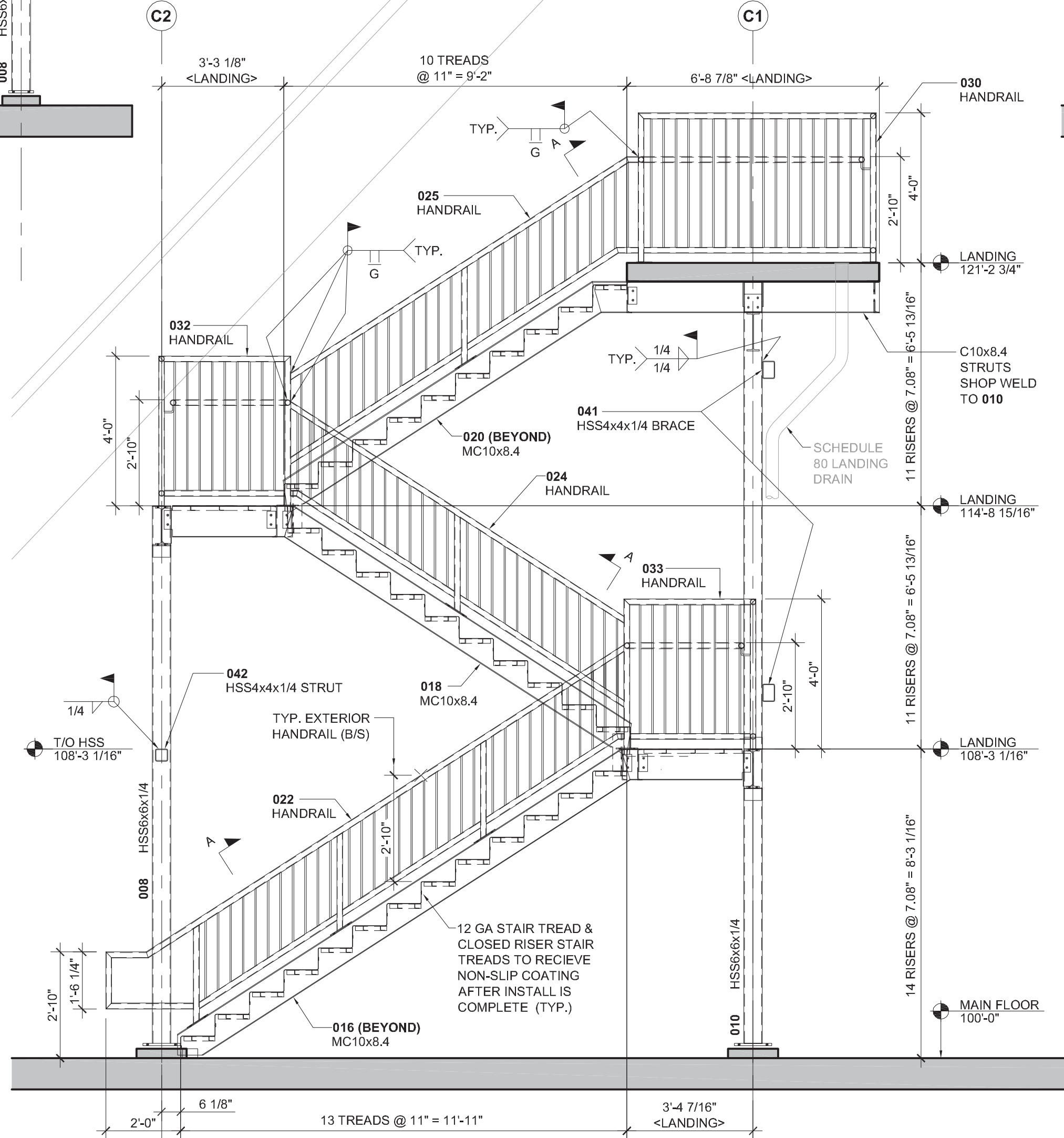


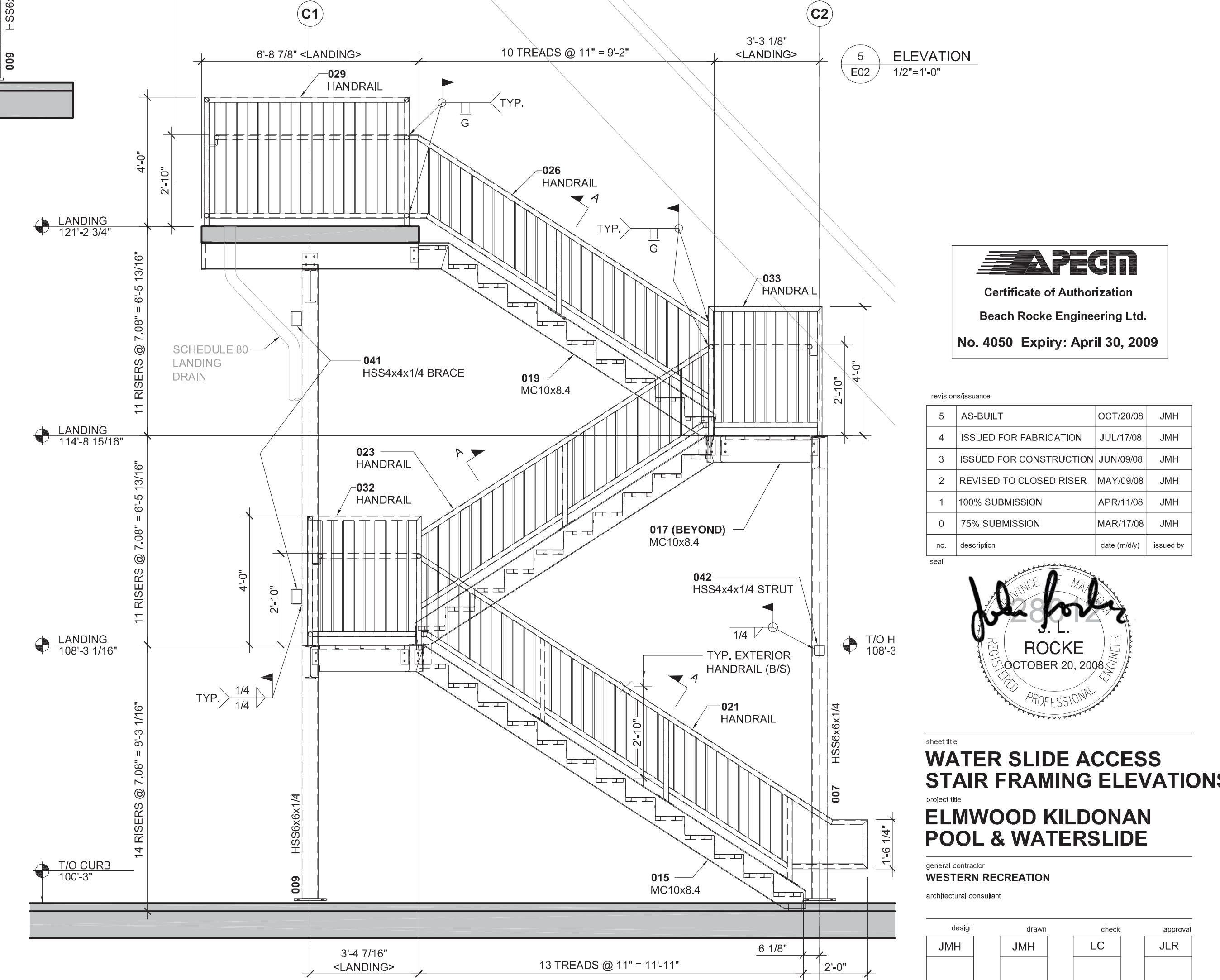
1 ELEVATION
3/8"=1'-0"



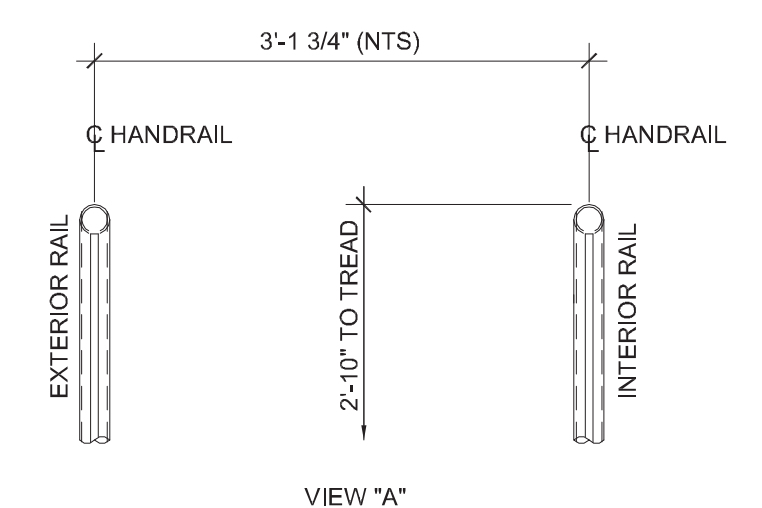
2 ELEVATION
3/8"=1'-0"



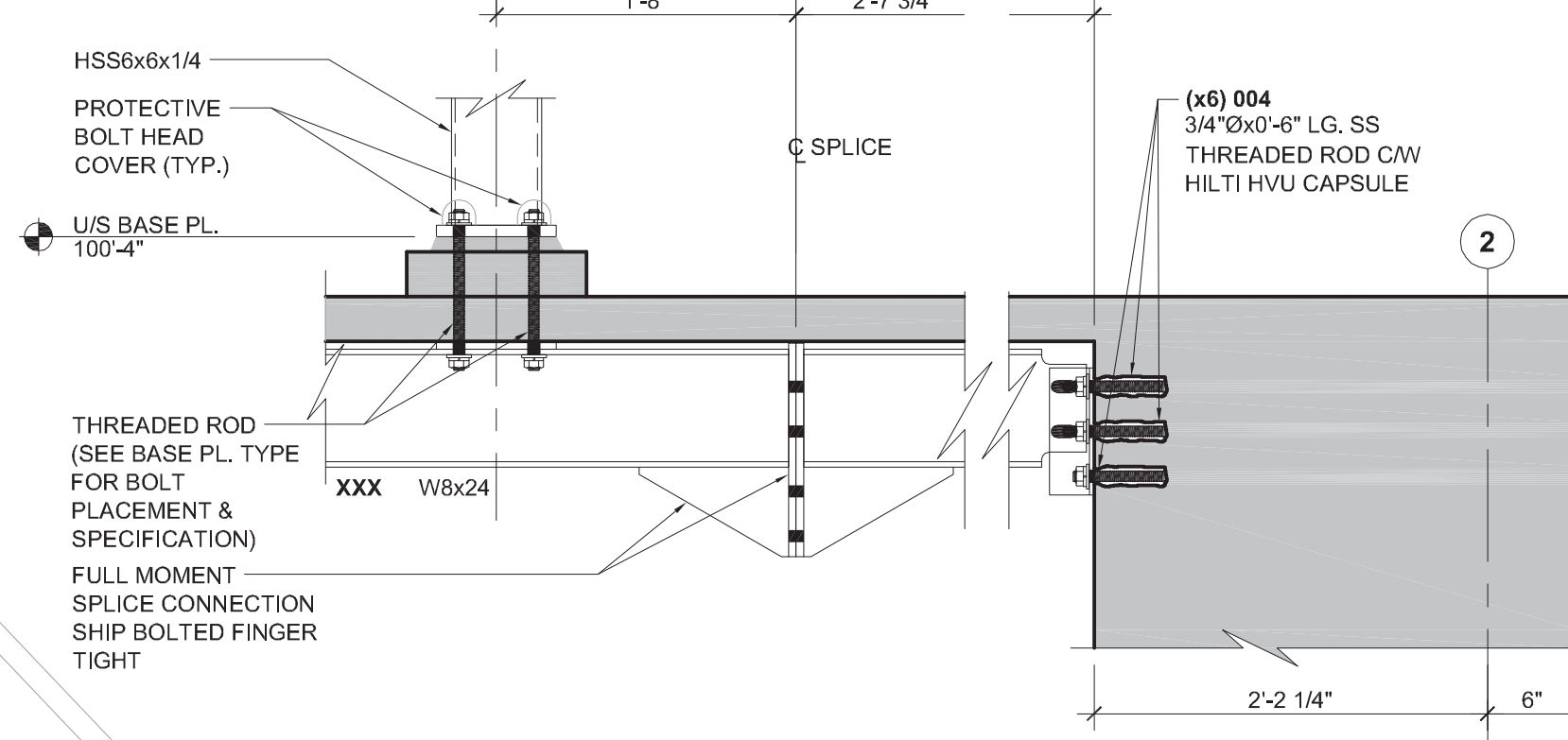
3 ELEVATION
3/8"=1'-0"



4 ELEVATION
3/8"=1'-0"



VIEW 'A'



HSS6x6x1/4
 PROTECTIVE BOLT HEAD COVER (TYP.)
 U/S BASE PL. 100-4"
 XXX W8x24
 C SPLICE
 (x6) 004 3/4"x20'-6" LG. SS THREADED ROD CW HILTI HVU CAPSULE
 2-2 1/4" 6"
 THREADED ROD (SEE BASE PL. TYPE FOR BOLT PLACEMENT & SPECIFICATION)
 FULL MOMENT SPLICE CONNECTION SHIP BOLTED FINGER TIGHT

Certificate of Authorization
 Beach Rocke Engineering Ltd.
 No. 4050 Expiry: April 30, 2009

no.	description	date (m/d/y)	issued by
5	AS-BUILT	OCT/20/08	JMH
4	ISSUED FOR FABRICATION	JUL/17/08	JMH
3	ISSUED FOR CONSTRUCTION	JUN/09/08	JMH
2	REVISED TO CLOSED RISER	MAY/09/08	JMH
1	100% SUBMISSION	APR/11/08	JMH
0	75% SUBMISSION	MAR/17/08	JMH

sheet title
WATER SLIDE ACCESS STAIR FRAMING ELEVATIONS
 project title
ELMWOOD KILDONAN POOL & WATERSLIDE
 general contractor
WESTERN RECREATION
 architectural consultant

design	drawn	check	approval
JMH	JMH	LC	JLR

date **MAR/10/08**
 sheet no.
E02
 scale **NOTED**

job no.
28012-G