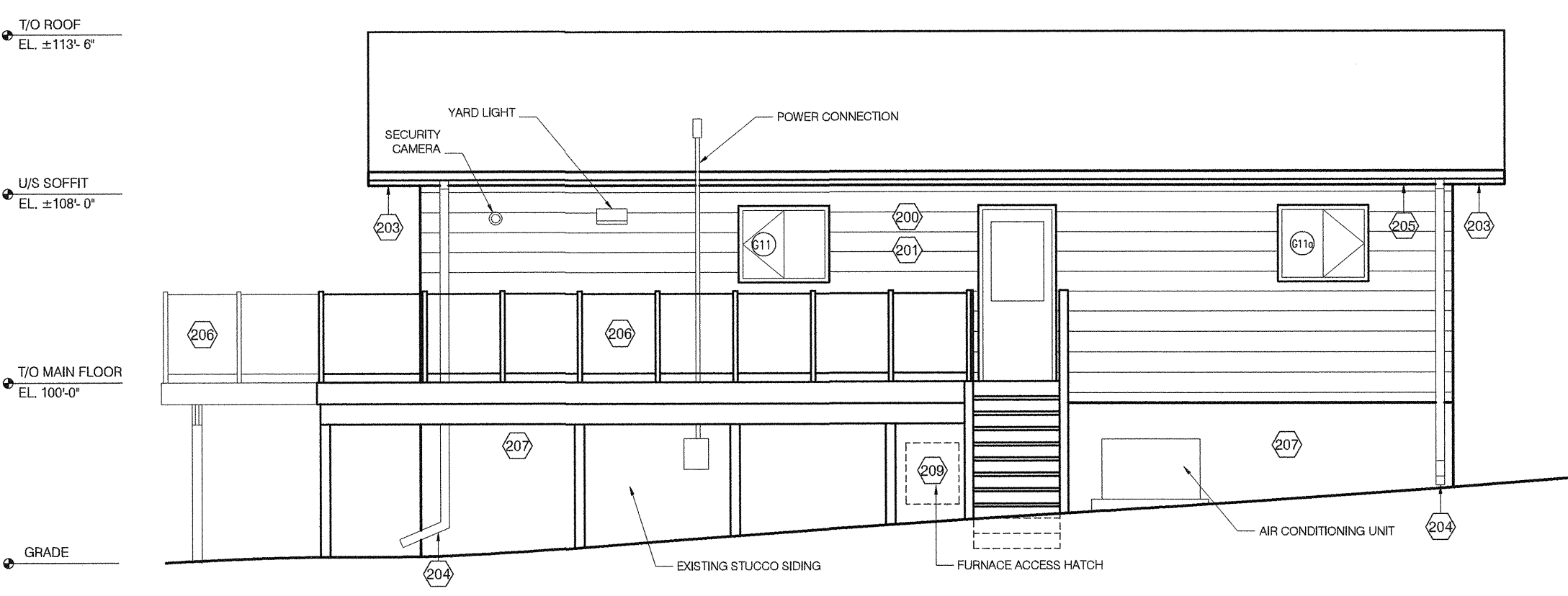
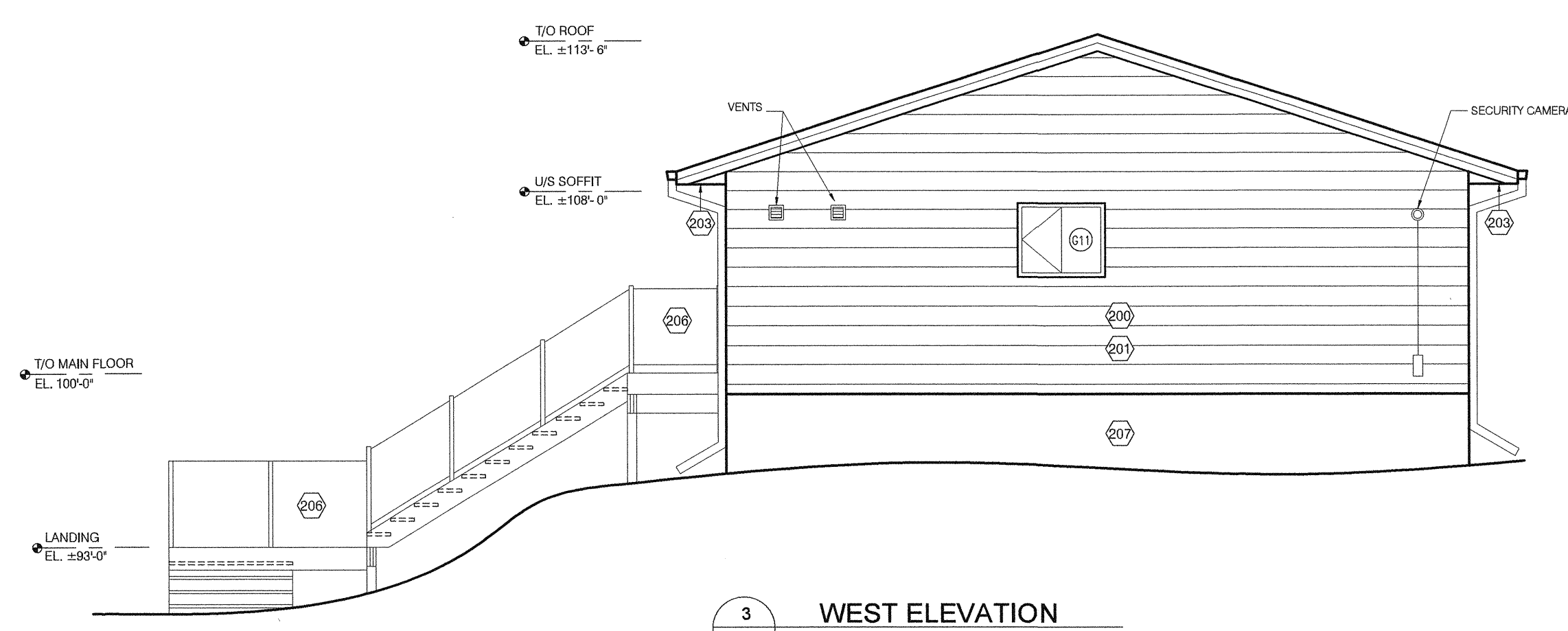


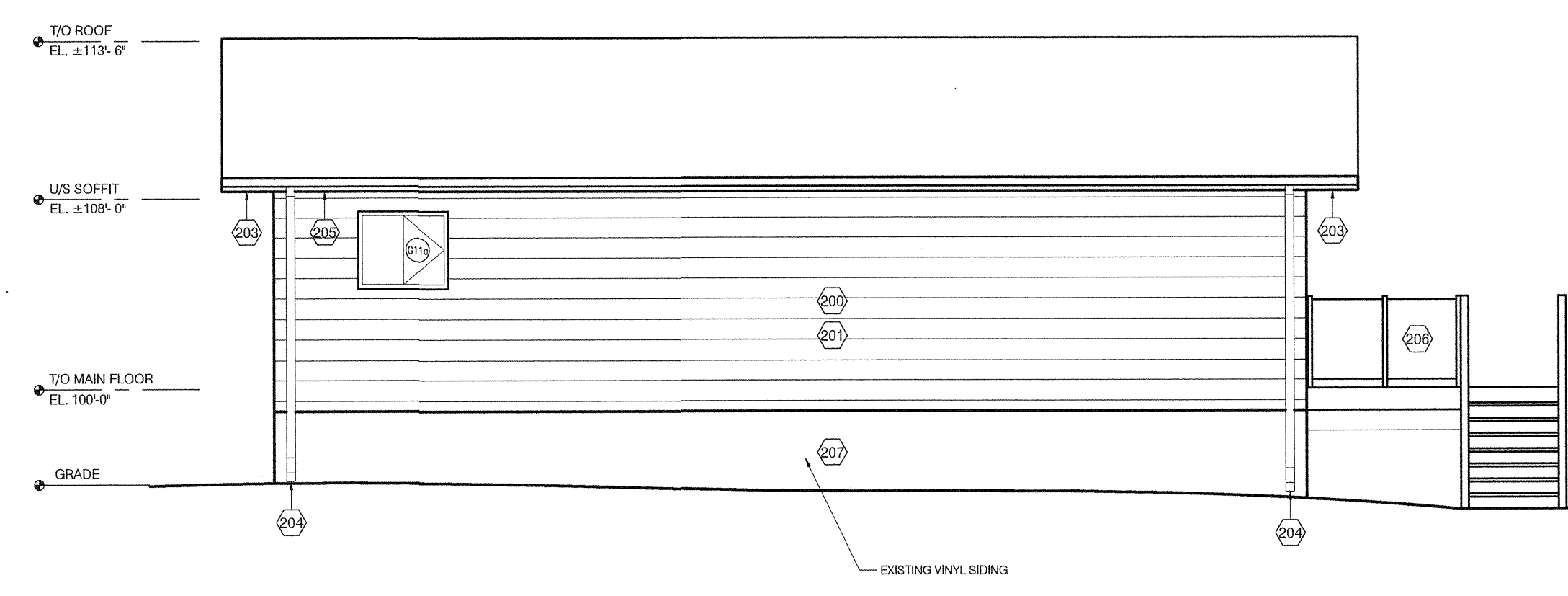
1 EAST ELEVATION
3/16" = 1'-0"



2 NORTH ELEVATION
3/16" = 1'-0"



3 WEST ELEVATION
3/16" = 1'-0"

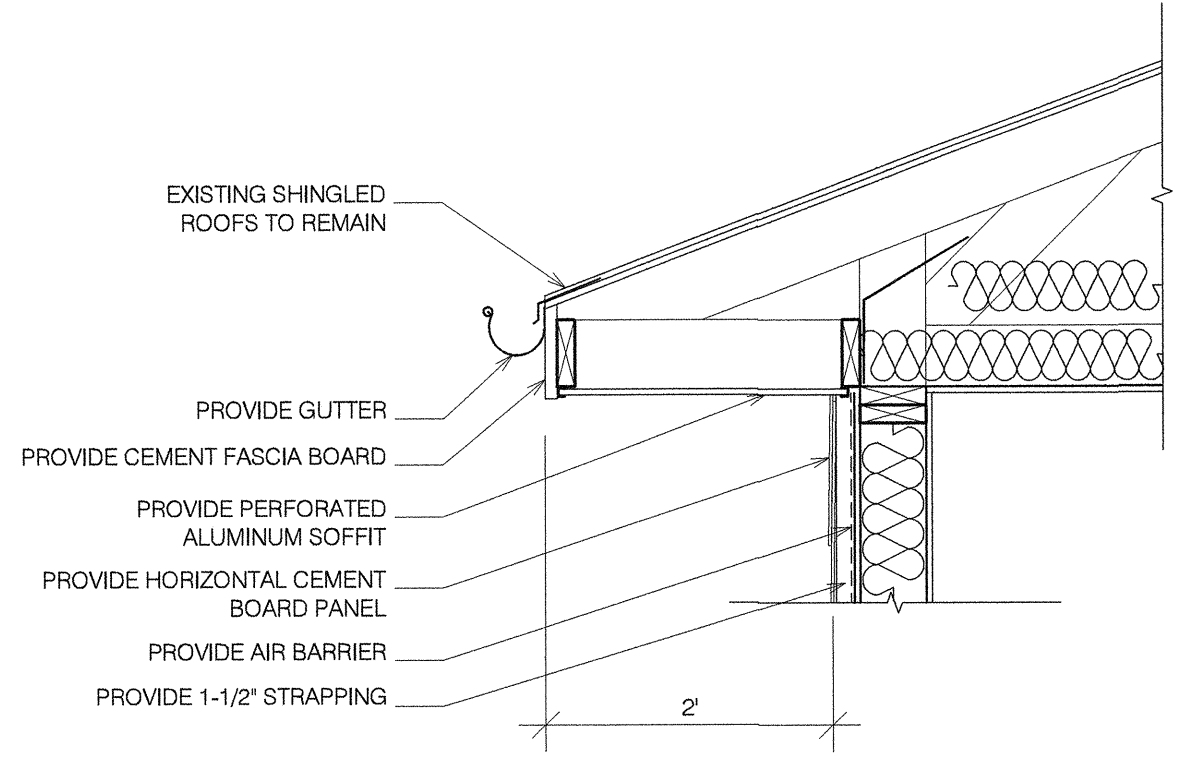


4 SOUTH ELEVATION
3/16" = 1'-0"

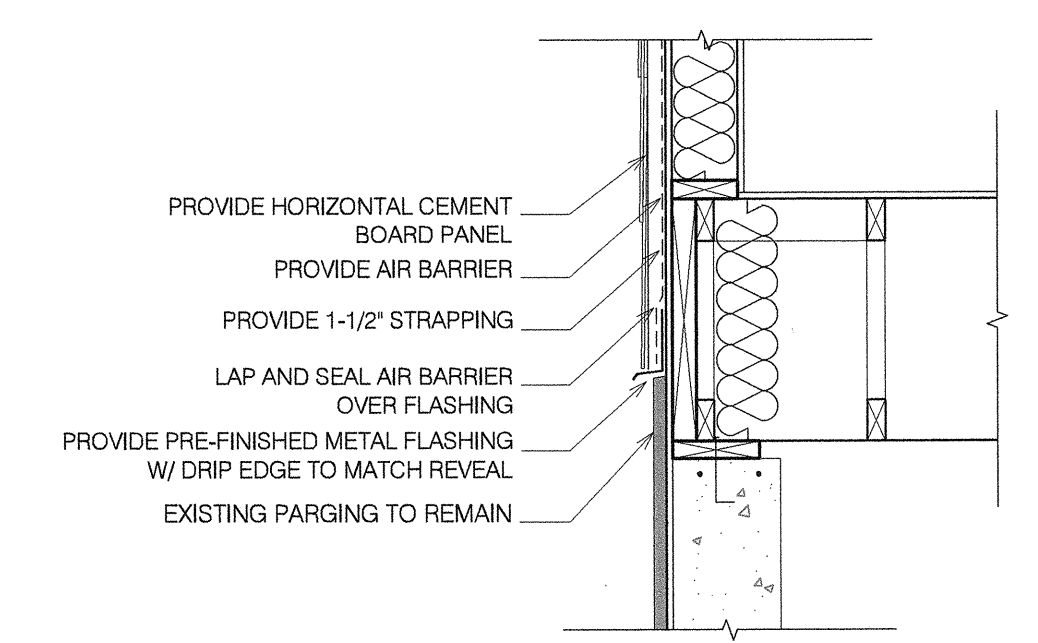
ELEVATION KEYNOTES LAKEVIEW RES.

- 200 REMOVAL OF ALL EXISTING VINYL & STUCCO SIDING.
- 201 CEMENT BOARD SIDING - CLIENT TO CONFIRM COLOR (REFER TO DETAILS FOR CORNER / EDGE CONDITIONS).
- 202 DELETED
- 203 REMOVE AND REPLACE EXISTING SOFFIT & FASCIA
- 204 ADD DOWNSPOUT - REFER TO ELEVATIONS FOR LOCATIONS
- 205 ADD GUTTER - REFER TO ELEVATIONS FOR LOCATIONS
- 206 REMOVE EXISTING P.T. WOOD RAILING AND REPLACE WITH PRE ENGINEERED POST AND GLASS RAILING SYSTEM
- 207 EXISTING FOUNDATION PARGING TO REMAIN
- 208 EXISTING FOUNDATION PARGING TO REMAIN
- 209 INSTALL NEW FLUSH INSULATED ALUMINUM ACCESS DOOR WITH MOUNTING FLANGE. MINIMUM SIZE 36" X 36" OR LARGER AS REQUIRED FOR HRV AND DUCTWORK UPGRADES. PATCH AND REPAIR PARGING. MATERIAL .064" ALUMINUM. CONTINUOUS HINGE ON SIDE. KEYED CAMLOCK WITH MATCHING KEYS FOR ALL PANELS. 1" FLANGE. 2 1/2" INCH DEEP WITH MINERAL WOOL INSULATION, NEOPRENE GASKETED, WHITE POWDER COAT.

CONTRACTOR TO COORDINATE REMOVAL / REINSTATEMENT & / OR EXTENSION OF ALL CLADDING PENETRATIONS INCLUDING BUT NOT LIMITED TO ONES NOTED ON DRAWINGS



5 SOFFIT DETAIL
3/4" = 1'-0"

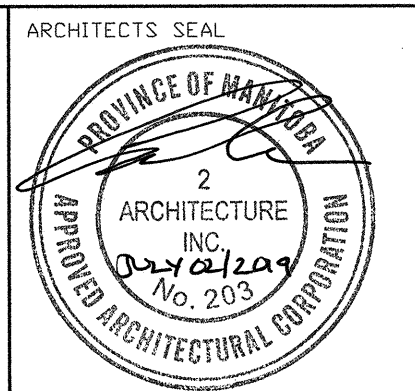
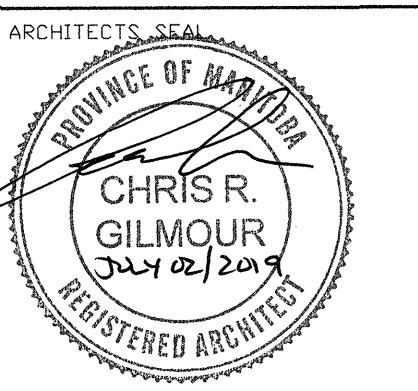


6 CLADDING DETAIL @ FOUNDATION
3/4" = 1'-0"

DO NOT SCALE THE DRAWINGS. NO REPRODUCTION MAY BE MADE WITHOUT THE PERMISSION OF 2 ARCHITECTURE INC. THE GENERAL CONTRACTOR AND ALL SUB-TRADES SHALL CHECK AND VERIFY ALL DIMENSIONS AND DATA NOTED HEREIN WITH CONDITIONS OF THE SITE AND SHALL BE HELD RESPONSIBLE FOR REPORTING ANY DISCREPANCIES TO THE CONTRACT ADMINISTRATOR. THIS DRAWING IS NOT TO BE USED FOR CONSTRUCTION UNTIL SIGNED AND SEALED.

B.M. ELEV.				
NO.	ISSUED FOR TENDER- 643-2019	JULY 2	2A	
NO.	REVISIONS	DATE	BY	

2 architecture	
DESIGNED BY	CG
CHECKED BY	CG
DRAWN BY	ES
APPROVED BY	ES
SCALE:	
HORIZONTAL	AS NOTED
VERTICAL	
RELEASED FOR CONSTRUCTION	
DATE	JULY 2, 2019
PLDT DATE:	JULY 2, 2019



THE CITY OF WINNIPEG
WATER AND WASTE DEPARTMENT
ENGINEERING DIVISION

**SHOAL LAKE AQUEDUCT INTAKE
RESIDENCE UPGRADES
LAKE VIEW-ELEVATIONS**

CONSULTANT DRAWING NUMBER
B4.1

CITY DRAWING NUMBER: 1-0600R-B0004-001
SHEET 9 OF 11

FILE PATH:
FILE NAME: