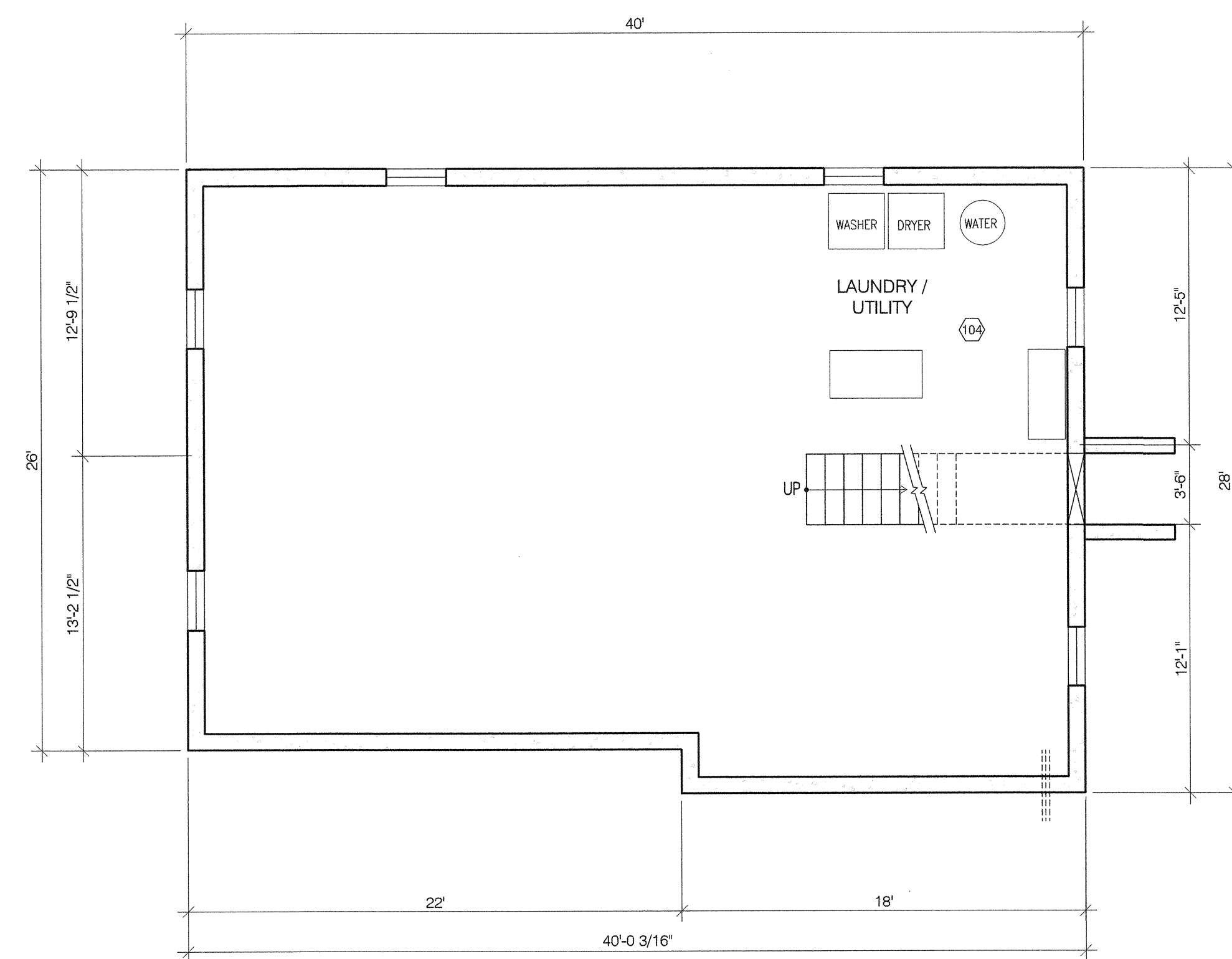
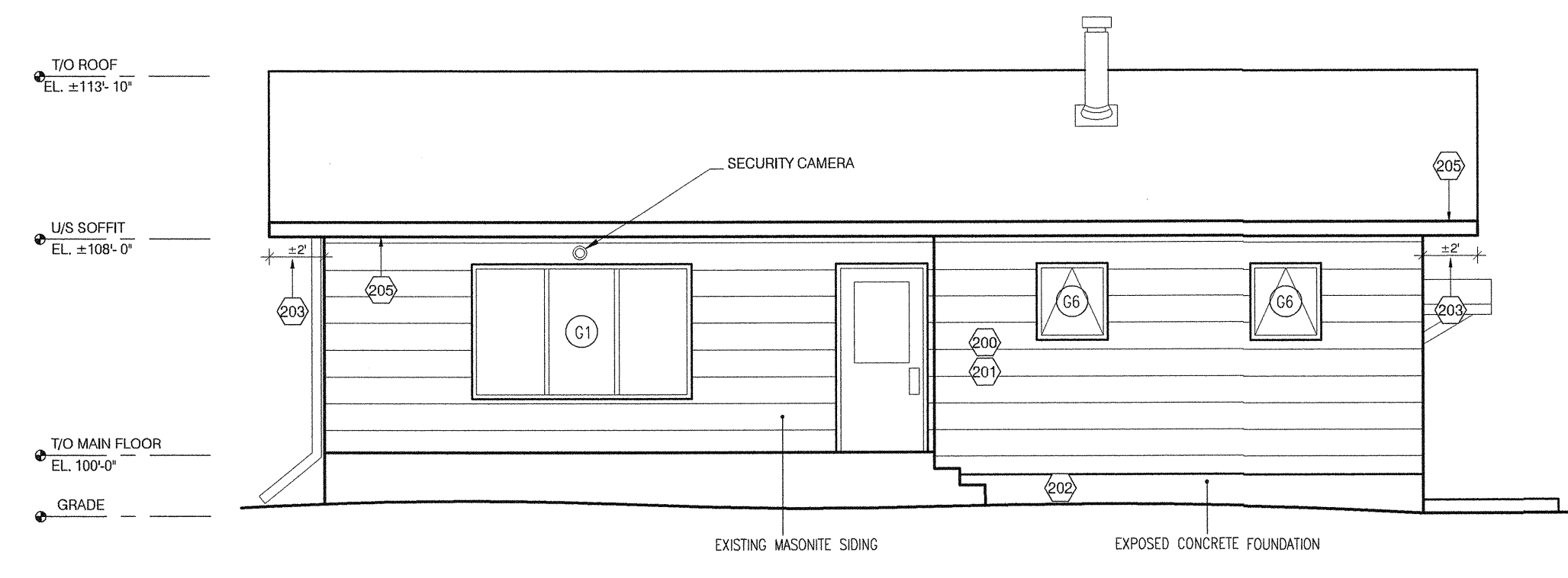


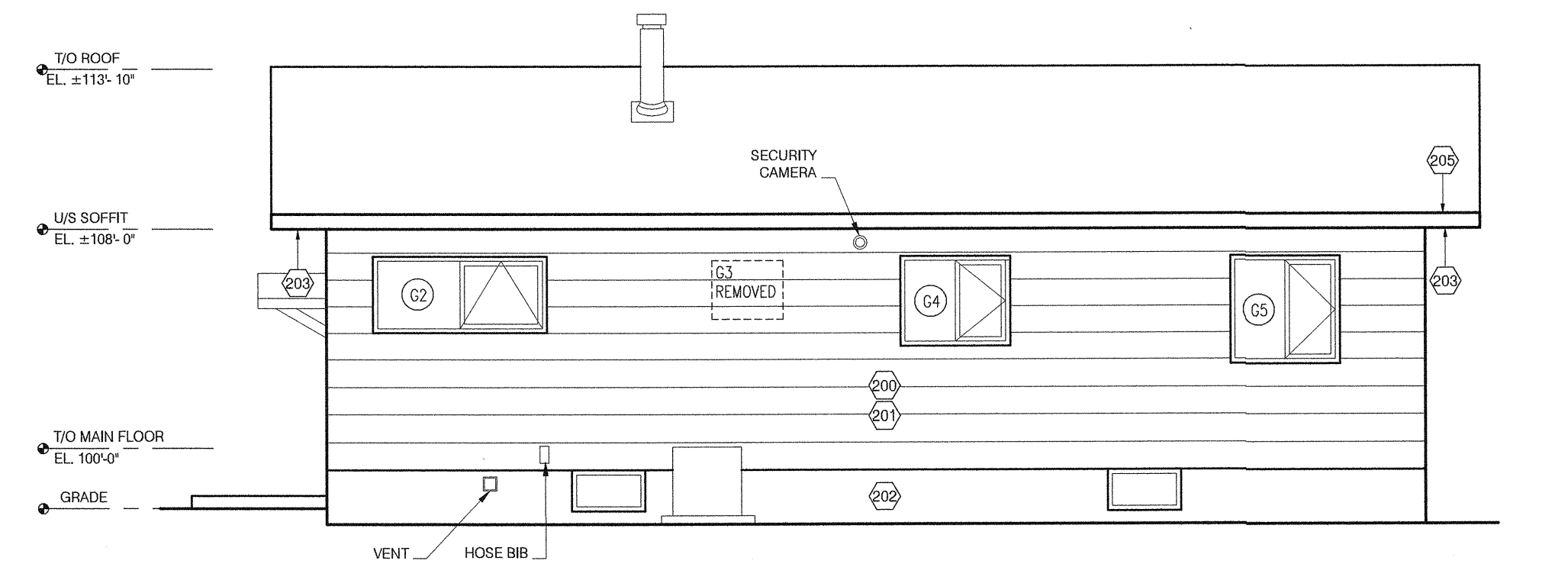
1 MAIN FLOOR PLAN  
3/16" = 1'-0"



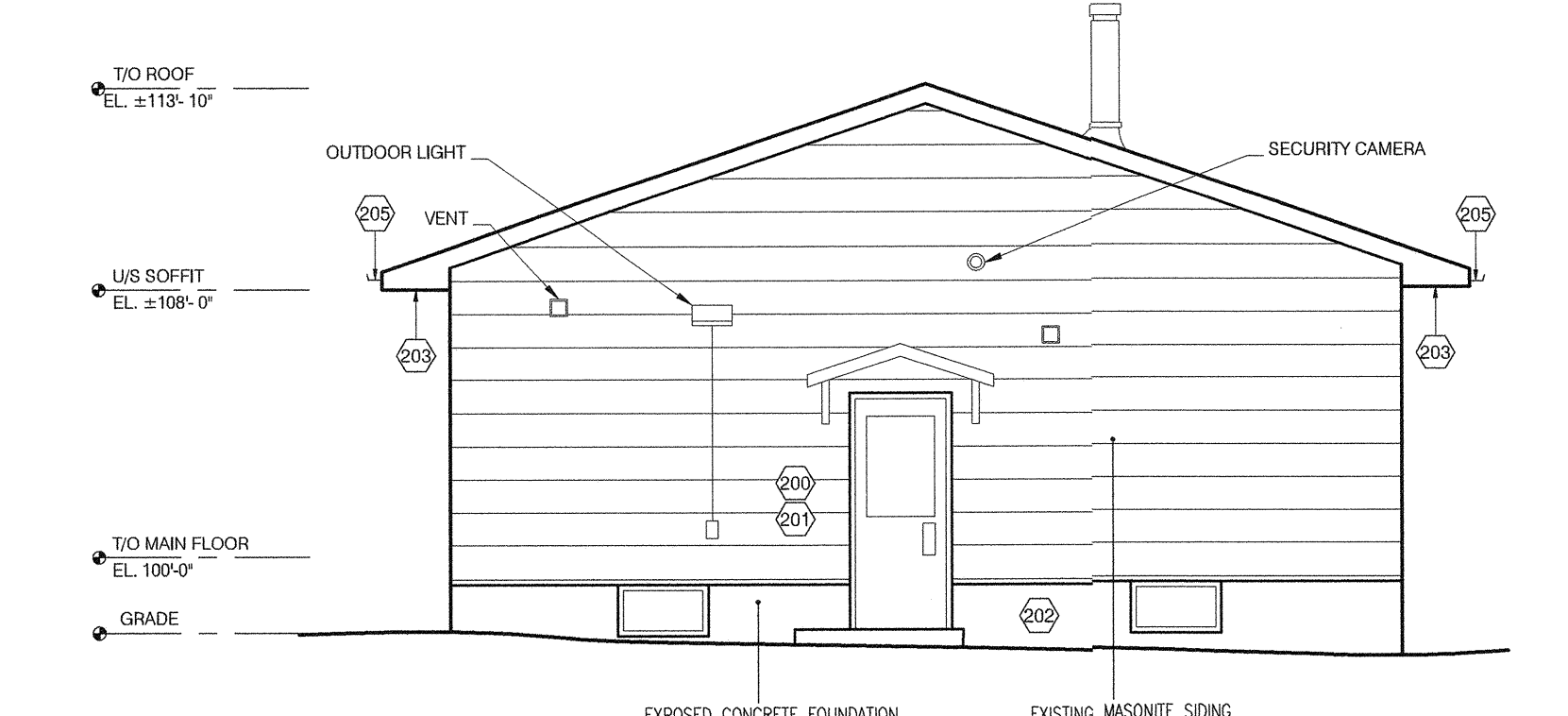
2 BASEMENT PLAN  
3/16" = 1'-0"



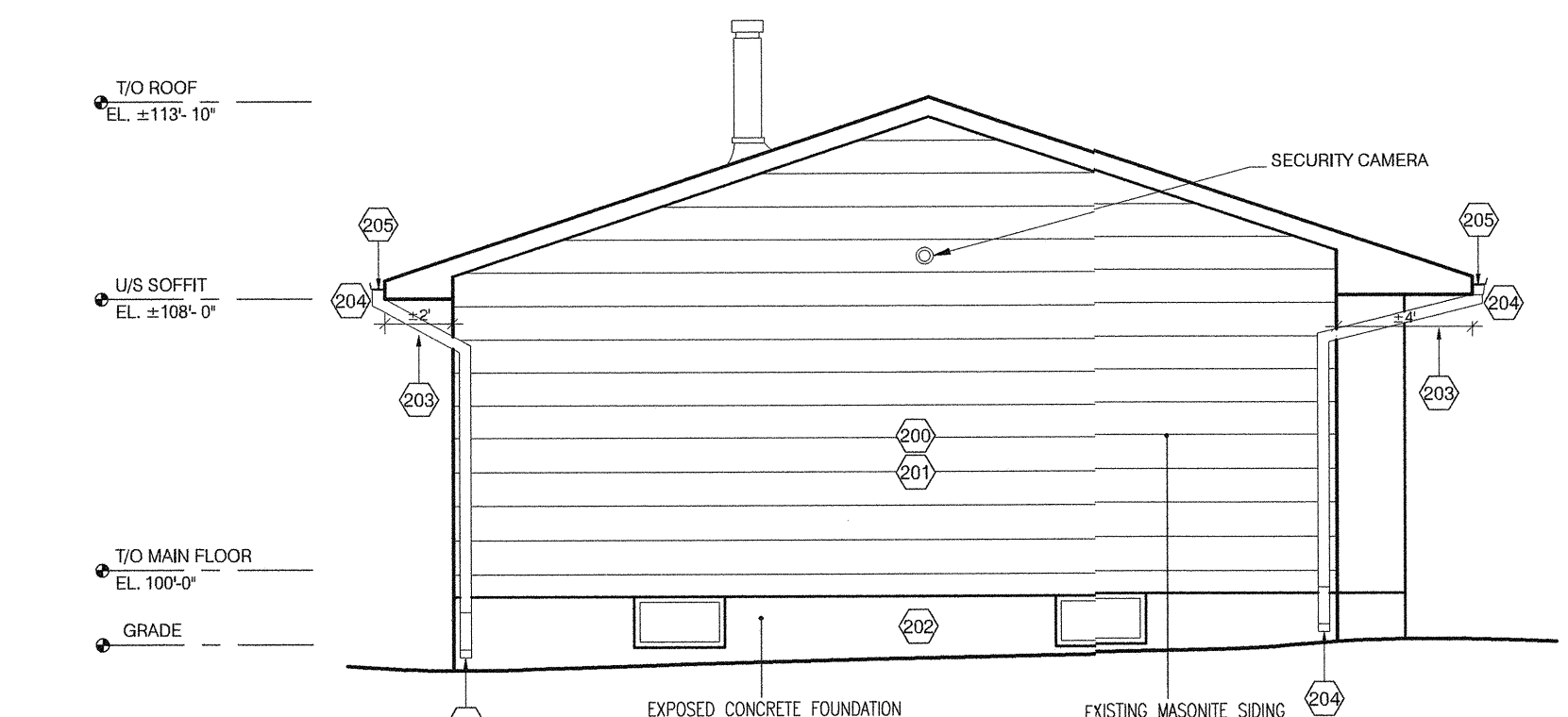
3 WEST ELEVATION  
3/16" = 1'-0"



4 EAST ELEVATION  
3/16" = 1'-0"



5 SOUTH ELEVATION  
3/16" = 1'-0"



6 NORTH ELEVATION  
3/16" = 1'-0"

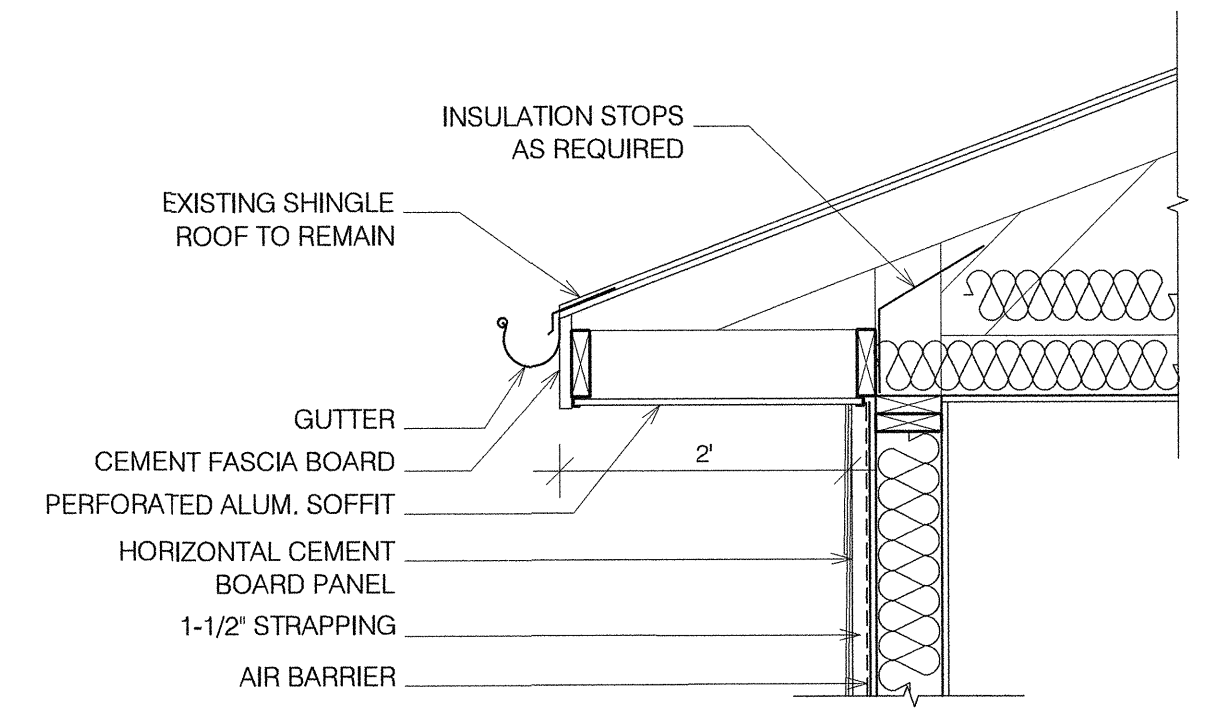
PLAN KEYNOTES OPERATORS RES.

- 103 REMOVE AND REPLACE EXISTING EXTERIOR DOOR. CONTRACTOR TO PATCH AND REPAIR ANY INTERIOR OR EXTERIOR DAMAGE AS RESULT OF THE REMOVAL.
- 101 REMOVE AND REPLACE EXTERIOR WINDOWS. CONTRACTOR TO PATCH AND REPAIR ANY INTERIOR OR EXTERIOR DAMAGE AS RESULT OF REMOVAL.
- 102 BATHROOM WINDOW TO BE REMOVED AND IN-FILLED WITH APPROVED ENVELOPE ASSEMBLY.
- 103 ALL MAIN FLOOR FLOORING TO BE REMOVED AND REPLACED WITH VINYL PLANK FLOORING. (CONTINUOUS THROUGHOUT)
- 104 PROVIDE NEW HRV - CONTRACTOR TO COORDINATE INSTALLATION OF HRV. CONTRACTOR TO PROVIDE OWN ENGINEERS, TRADES & PERMITS. CONTRACTOR TO COORDINATE MODIFICATIONS TO EXISTING FURNACE, OPENINGS IN EXTERIOR WALL, AND RETAIN CLEARANCES AROUND ALL EQUIPMENT.

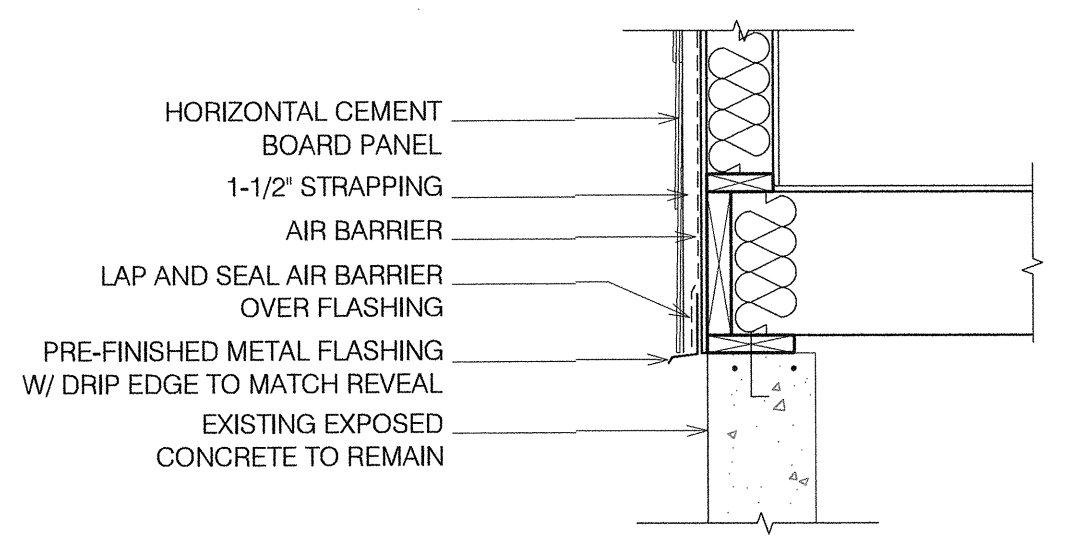
ELV. KEYNOTES OPERATORS RES.

- 200 REMOVAL AND ABATEMENT OF EXISTING MASONITE SIDING.
- 201 PROVIDE CEMENT BOARD SIDING - CITY TO CONFIRM COLOR (REFER TO DETAILS FOR CORNER / EDGE CONDITIONS).
- 202 EXISTING EXPOSED CONCRETE FOUNDATION TO REMAIN
- 203 REMOVE AND REPLACE EXISTING SOFFIT AND FASCIA
- 204 REMOVE AND REPLACE EXISTING DOWNSPOUTS - EXISTING LOCATIONS TO REMAIN
- 205 REMOVE AND REPLACE EXISTING GUTTERS - EXISTING LOCATIONS TO REMAIN

CONTRACTOR TO COORDINATE REMOVAL / REPLACEMENT & / OR EXTENSION OF ALL CLADDING PENETRATIONS INCLUDING BUT NOT LIMITED TO ONES NOTED ON DRAWINGS



7 SOFFIT DETAIL  
3/4" = 1'-0"

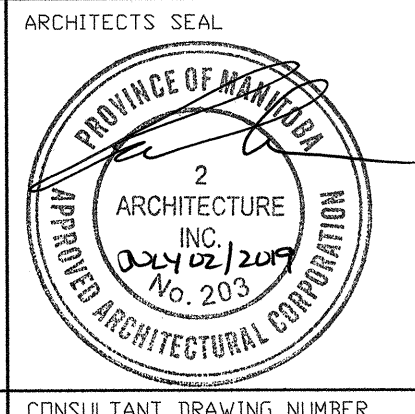
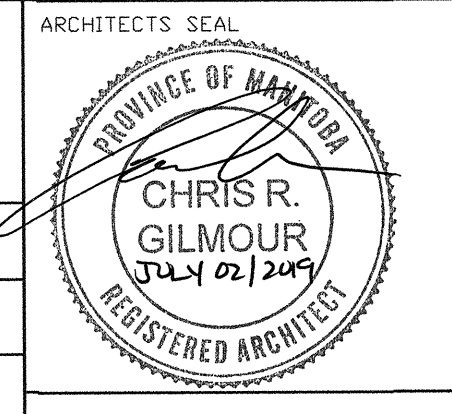


8 CLADDING DETAIL @ FOUNDATION  
3/4" = 1'-0"

DO NOT SCALE THE DRAWINGS. NO REPRODUCTION MAY BE MADE WITHOUT THE PERMISSION OF 2 ARCHITECTURE INC. THE GENERAL CONTRACTOR AND ALL SUB-TRADES SHALL CHECK AND VERIFY ALL DIMENSIONS AND DATA NOTED HEREIN WITH CONDITIONS OF THE SITE AND SHALL BE HELD RESPONSIBLE FOR REPORTING ANY DISCREPANCIES TO THE CONTRACT ADMINISTRATOR. THIS DRAWING IS NOT TO BE USED FOR CONSTRUCTION UNTIL SIGNED, AND SEALED.

NO.	ISSUED FOR TENDER- 643 2019	JULY 2	2A
00	ISSUED FOR TENDER- 643 2019	JULY 2	2A
01	REVISIONS	DATE	BY

<b>2 architecture</b>	
DESIGNED BY CG	CHECKED BY CG
DRAWN BY ES	APPROVED BY ES
SCALE: HORIZONTAL AS NOTED	RELEASED FOR CONSTRUCTION
DATE: JULY 2, 2019	DATE



**THE CITY OF WINNIPEG**  
WATER AND WASTE DEPARTMENT  
ENGINEERING DIVISION

**SHOAL LAKE AQUEDUCT INTAKE  
RESIDENCE UPGRADES  
OPERATORS RESIDENCE**

CITY DRAWING NUMBER: 1-0600R-B0001-001      SHEET 6 OF 11

CONSULTANT DRAWING NUMBER: B2.0

FILE PATH: B2.0  
FILE NAME: B2.0