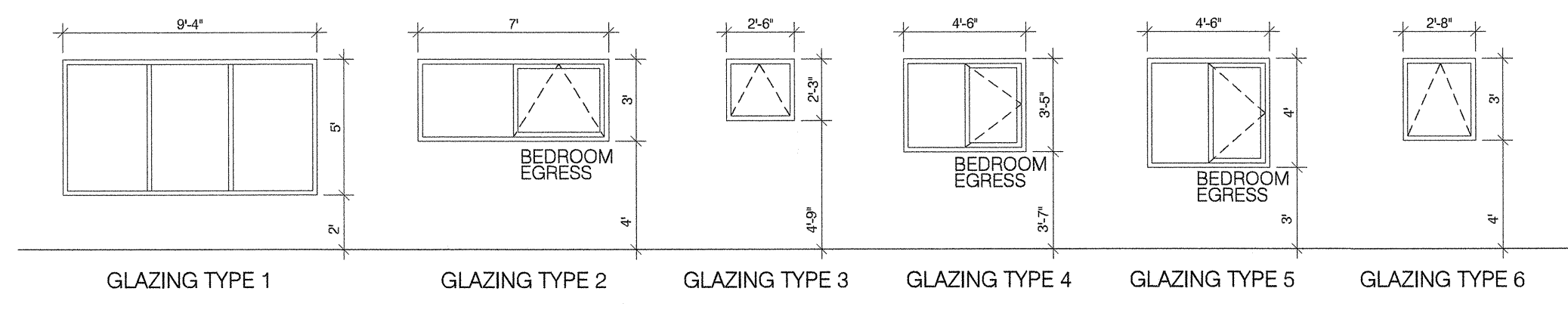
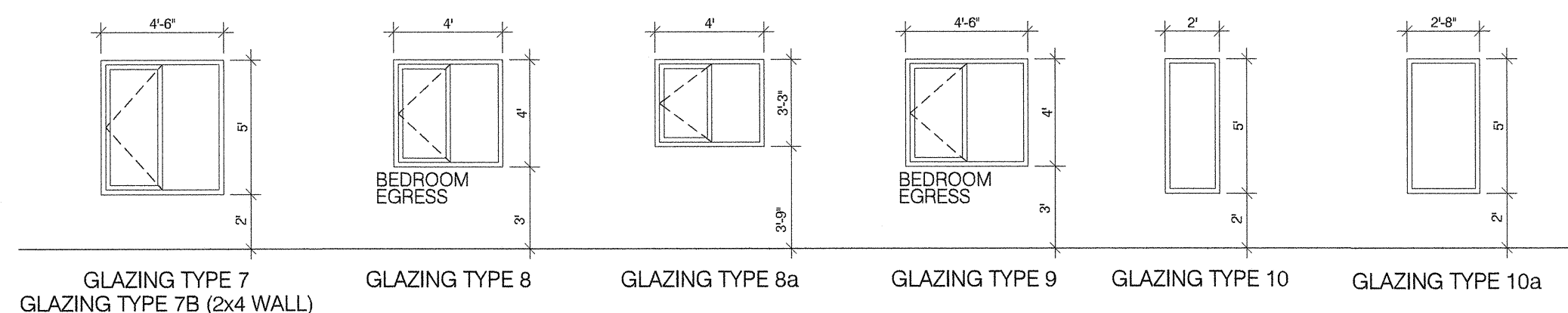


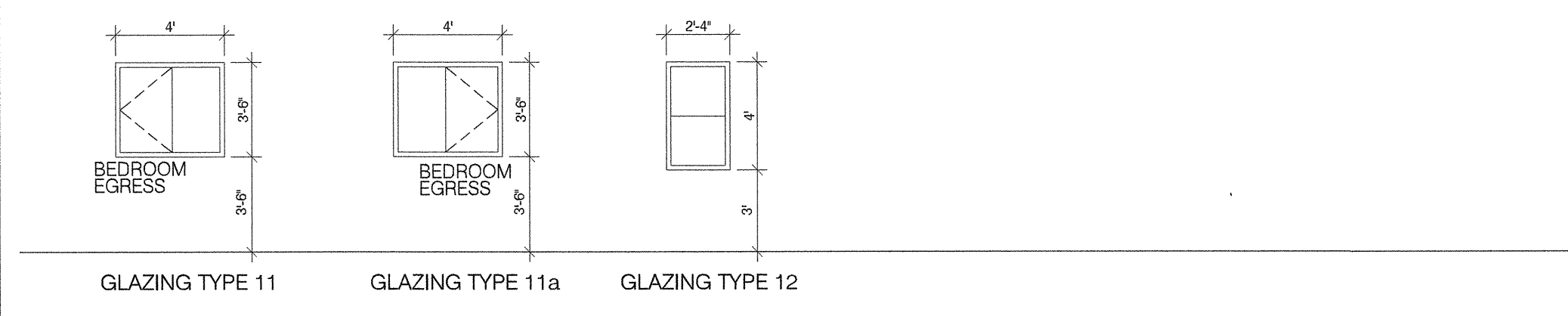
GLAZING TYPES - OPERATOR'S RESIDENCE



GLAZING TYPES - FOREMANS RESIDENCE



GLAZING TYPES - LAKEVIEW RESIDENCE



NOTES REGARDING WINDOWS:

ALL PUBLIC ENTRY GLAZING IN DOORS TO BE TEMPERED GLASS.

EGRESS WINDOW MUST COMPLY WITH MBC 2011 REQUIREMENTS (9.8.10.1) SHALL HAVE AN UNOBSTRUCTED OPENING OF NOT LESS THAN .35 MF IN AREA WITH NO DIMENSION LESS THAN 380 MM (1'-2") & MAINTAIN THE REQUIRED OPENING DURING AN EMERGENCY WITHOUT THE NEED FOR ADDITIONAL SUPPORT.

1 1/2" STRAPPING (PRESSURE TREATED) WINDOWS TO INCLUDE A 2" BRICK MOLD. (CONTRACTOR TO COORDINATE ON SITE). PROVIDE WINDOW SHOP DRAWINGS WITH PROPER BRICK MOLD DEPTH.

WINDOW MANUFACTURER - WINDOW SUPPLIER TO PROVIDE SHOP DRAWINGS.

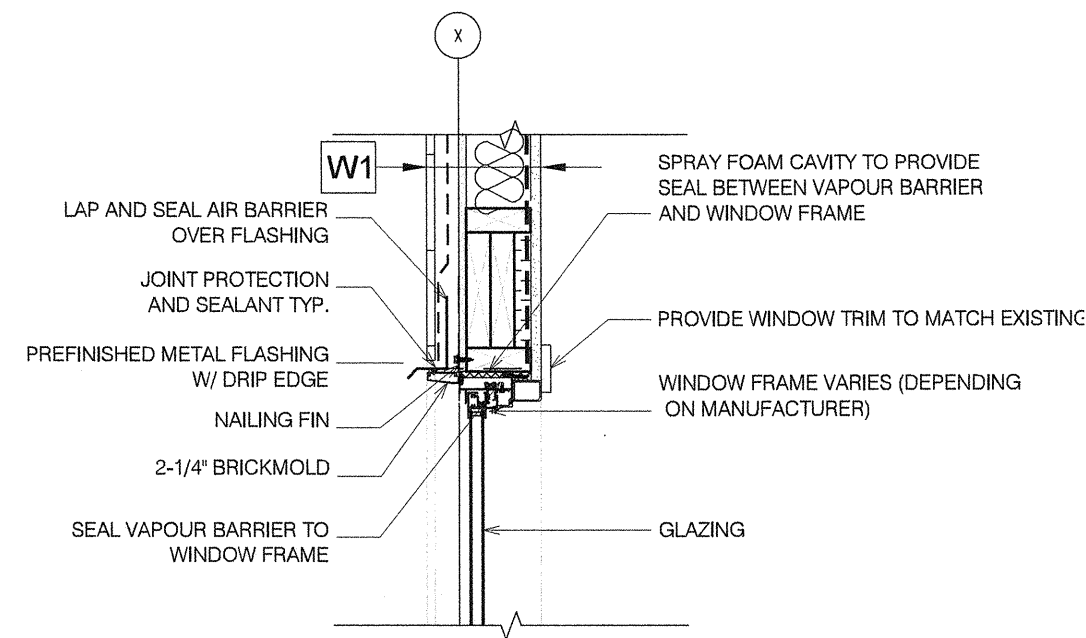
FRAME : FIBERGLASS FRAMES - COLOUR TO BE WHITE / OR WHITE ANODIZED (UNLESS NOTED OTHERWISE)

SCREENS: PROVIDE BUG SCREENS FOR OPERABLE WINDOWS

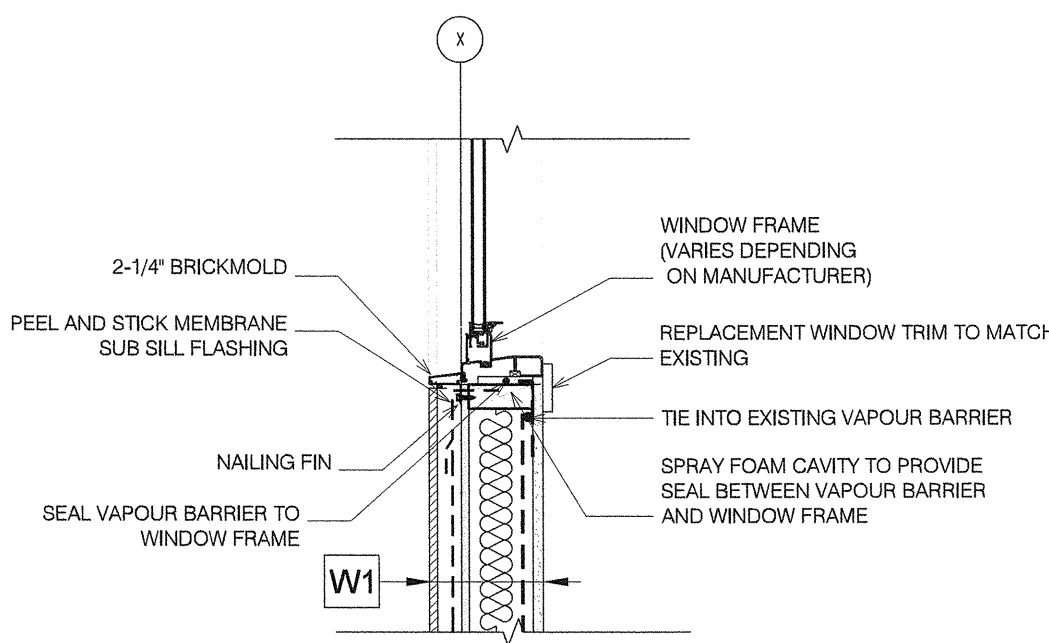
GLAZING : TO BE CLEAR GLASS, DUAL-GLAZED, ALL WINDOWS MUST COMPLY WITH 2011 MANITOBA ENERGY CODE FOR BUILDINGS REQUIREMENTS, MINIMUM R VALUE AND INFILTRATION RATES).

WEATHER STRIPPING : TO BE APPLIED TO FULL PERIMETER OF OPERATING SASH/FRAME.

HARDWARE : ALL HARDWARE TO HAVE A CORROSION RESISTANT COATING - COLOR TO MATCH LOCK AND OPERATOR. LOCKS: STANDARD MULTI-POINT (19" NOM.) OR CAM LOCK. HANDLES: COLLAPSIBLE. SASH UNHOOKS FOR INTERIOR SERVICE IF NECESSARY. HEAVY-DUTY HINGES.



1 TYP. WINDOW HEADER DETAIL
1" = 1'-0"



2 TYP. WINDOW SILL DETAIL
1" = 1'-0"

NOTE: WATER DAMAGE
WATER DAMAGE OBSERVED @ WINDOW SILLS. CONTRACTOR TO CARRY CASH ALLOWANCE FOR REPAIRS OF, BUT NOT LIMITED TO, DRYWALL, WOOD FRAMING, AND INSULATION.

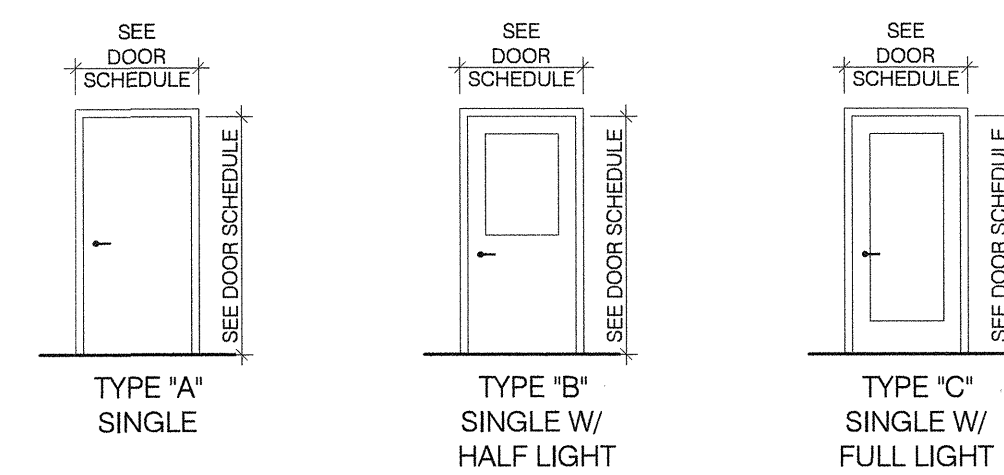
DOOR SCHEDULE (BASE BUILDING)

DOOR NO.	ROOM NAME	DOOR				FRAME			FIRE RATING	HOME GROUP	REMARKS
		WIDTH	HEIGHT	THICK	TYPE	MAT	FIN	TYPE			
D1	ENTRANCE (OPORATORS RES.)	3'-0"	6'-8"	1-3/4"	B	SC	PAINT-1	1	WD	PAINT-1	
D2	SIDE ENTRANCE (OPORATORS RES.)	3'-0"	6'-8"	1-3/4"	B	SC	PAINT-1	1	WD	PAINT-1	
D3	ENTRANCE (FORMANS RES.)	3'-0"	6'-8"	1-3/4"	B	SC	PAINT-1	1	WD	PAINT-1	
D4	VERANDA (FORMANS RES)	3'-0"	6'-8"	1-3/4"	C	SC	PAINT-1	2	WD	PAINT-1	
D5	ENTRANCE (LAKE VIEW RES.)	3'-0"	6'-8"	1-3/4"	B	SC	PAINT-1	1	WD	PAINT-1	
D6	LIVING TO VERANDA (LAKE VIEW RES.)	2'-6"	6'-8"	1-3/4"	B	SC	PAINT-1	1	WD	PAINT-1	
D7	VERANDA TO PATIO (LAKE VIEW RES.)	3'-0"	6'-8"	1-3/4"	B	SC	PAINT-1	1	WD	PAINT-1	

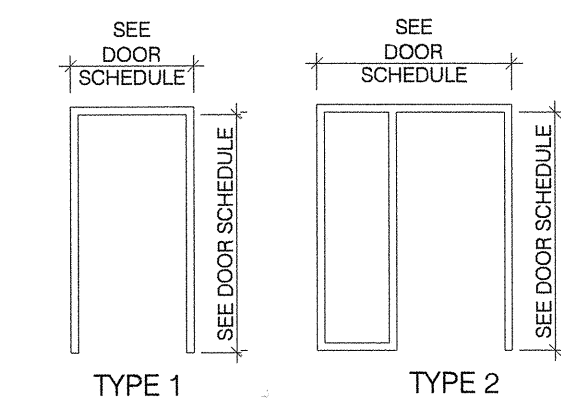
ABBREVIATIONS

ALUM	ALUMINUM	HR	HOUR
ADO	AUTOMATIC DOOR OPENER	MN	MINUTE
ANOD	ANODIZED	P	PAINT FINISH
CF	CLEAR FINISH	PLAM	PLASTIC LAMINATE
DA	DOUBLE ACTING	PR	PAIR
DE	DOUBLE EGRESS	PREF	PREFINISHED
DFG	DOOR FRAME GUARD	PS	PRESSED STEEL
DP	DOOR PROTECTION	ST	STEEL
EP	EPOXY PAINT	STN	STAIN FINISH
EFF	ELECTRICAL POWER TO FRAME	WD	WOOD
EXIST	EXISTING	WC	WOOD HOLLOW CORE
HM	HOLLOW METAL	WS	WOOD SOLID CORE
HMI	HOLLOW METAL INSULATED	WR	WOOD RAIL & STYLE
SC	STEEL CLAD		

DOOR TYPES



FRAME TYPES



NOTES REGARDING DOORS:

REFER TO DOOR SCHEDULES FOR SIZE, MATERIAL, FINISH, RATINGS ETC.

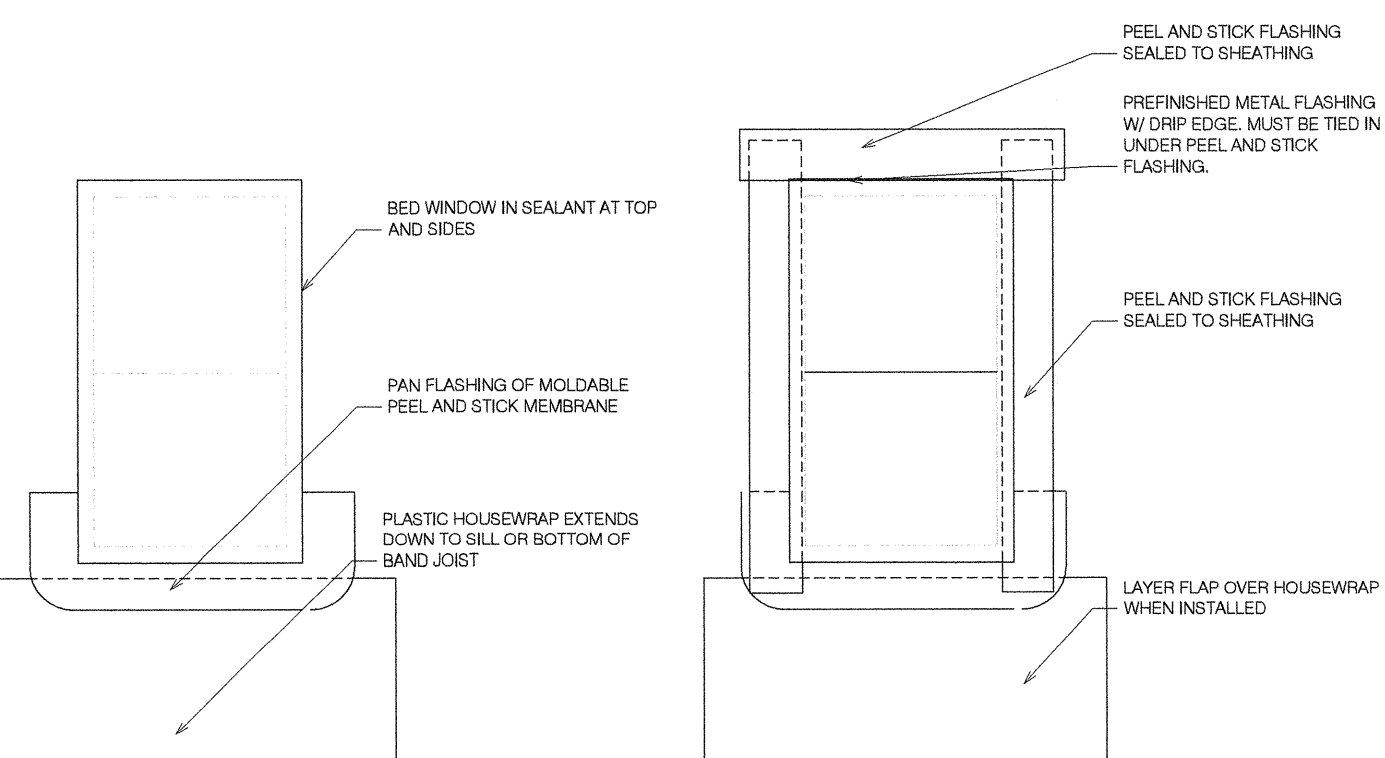
ALL EXPOSED SURFACES TO BE COATED WITH DURABLE SUBSTANCES SPECIFIED BY THE MANUFACTURER TO RESIST CHIPPING, BLISTERING, CHALKING, DISCOLORATION AND AGING UNDER NORMAL ATMOSPHERIC CONDITIONS. CONTRACTOR TO COORDINATE JAMB DEPTHS WITH DOOR SUPPLIER.

EXTERIOR RESIDENTIAL DOORS TO BE MIN 20 GAUGE STEEL CLAD DOORS W/ PRIMED WOOD STILES AND TOP RAIL AND A POLYURETHANE CORE (UNLESS NOTED OTHERWISE).

DOOR LOCKS: ALL DOOR TO HAVE COMMON MASTER KEY FOR ALL FACILITIES. EACH FACILITY TO HAVE ONE COMMON KEY FOR ALL DOORS. CONTRACTOR TO COORDINATE WITH THE CITY.

HARDWARE SCHEDULE

HARDWARE TYPE	ENTRANCE LOCK SET	STORE ROOM LOCK	STORE FRONT LOCK SET	PRIVACY LOCK SET	PASSAGE LATCH SET	DEAD LATCH	DEAD BOLT	HINGE	ASTHAGAL	LEVER HANDLES	PUSH/PULL HARDWARE	RM EXIT DEVICE (PANO)	CLOSER	DOOR STOP	WALL STOP	KICK PLATES (S)	THRESHOLD	WEATHERSTRIPPING	LOW THRESHOLD SWEEP	AUTOMATIC OPERATOR	SWEEP	GASKET	REMARKS
TYPE 1 (MAIN ENTRANCE)	X																						
TYPE 2 (PATIO DOOR)																							
TYPE 3 (ENTRANCE TO PATIO)																							



SUB SILL/JAMB FLASHING DIAGRAM

1) LAP PAN FLASHING OVER FLAP OF HOUSEWRAP, THEN SET WINDOW INTO SEALANT ON TOP AND TWO SIDES

2) INSTALL SIDES SPLINES, HEAD FLASHING TO BE PROVIDED UNDER HOUSEWRAP FLAP AND TAP ALONG SIDE JAMBS.

DO NOT SCALE THE DRAWINGS. NO REPRODUCTION MAY BE MADE WITHOUT THE PERMISSION OF 2 ARCHITECTURE INC. THE GENERAL CONTRACTOR AND ALL SUB-TRADES SHALL CHECK AND VERIFY ALL DIMENSIONS AND DATA NOTED HEREIN WITH CONDITIONS OF THE SITE AND SHALL BE HELD RESPONSIBLE FOR REPORTING ANY DISCREPANCIES TO THE CONTRACT ADMINISTRATOR. THIS DRAWING IS NOT TO BE USED FOR CONSTRUCTION UNTIL SIGNED AND SEALED.

B.M. ELEV.					
NO.	ISSUED FOR TENDER- 643 2019	JULY 2	2A	VERTICAL	AS NOTED
NO.	REVISIONS	DATE	BY	DATE	DATE

2 architecture

DESIGNED BY: CG
CHECKED BY: CG
DRAWN BY: ES
APPROVED BY: ES

SCALE: HORIZONTAL AS NOTED
VERTICAL: JULY 2, 2019

RELEASED FOR CONSTRUCTION: [DATE]

ARCHITECTS SEAL: CHRIS R. GILMOUR, REGISTERED ARCHITECT, No. 203

ARCHITECTS SEAL: ARCHITECTURE INC., No. 203

CONSULTANT DRAWING NUMBER: **B5.0**

THE CITY OF WINNIPEG
WATER AND WASTE DEPARTMENT
ENGINEERING DIVISION

SHOAL LAKE AQUEDUCT INTAKE RESIDENCE UPGRADES SCHEDULES

CITY DRAWING NUMBER: 1-0600A-B0002-001
SHEET 10 OF 11