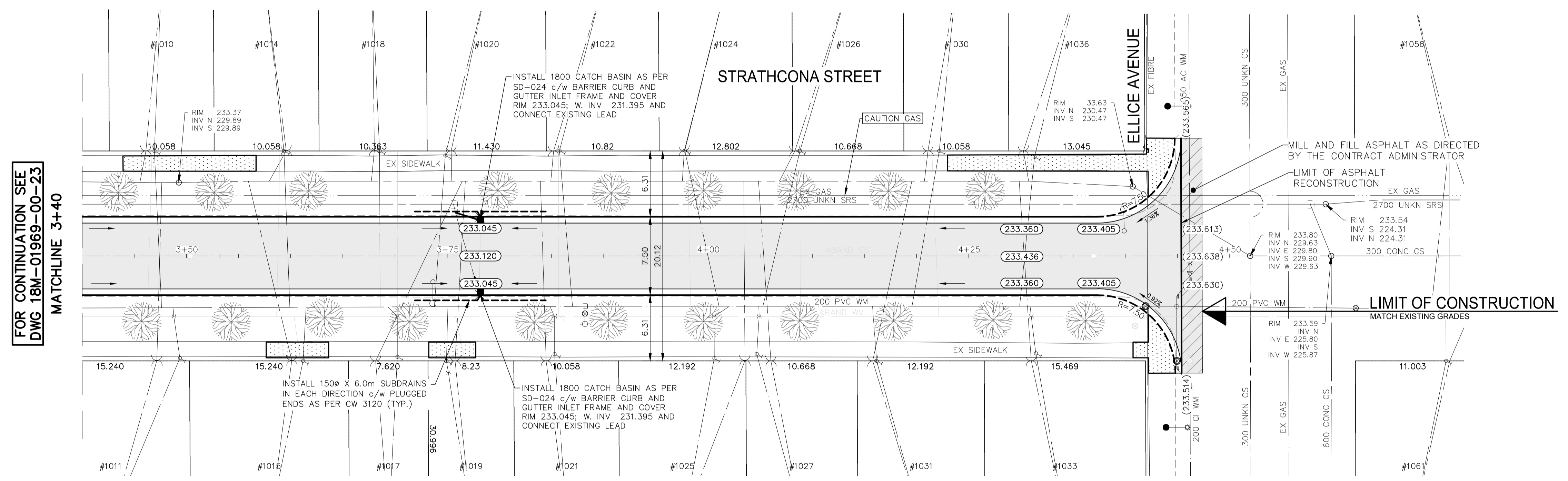
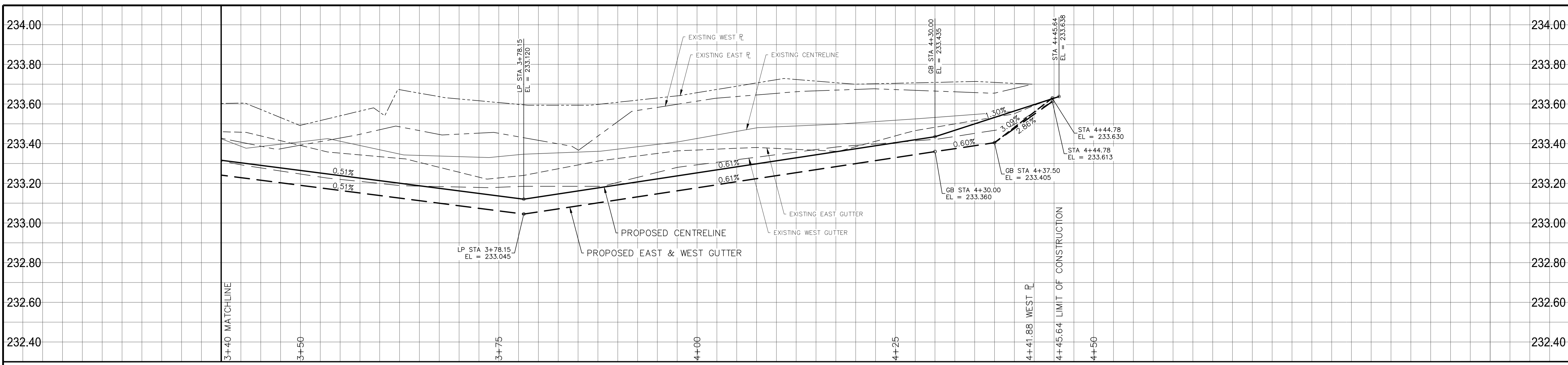
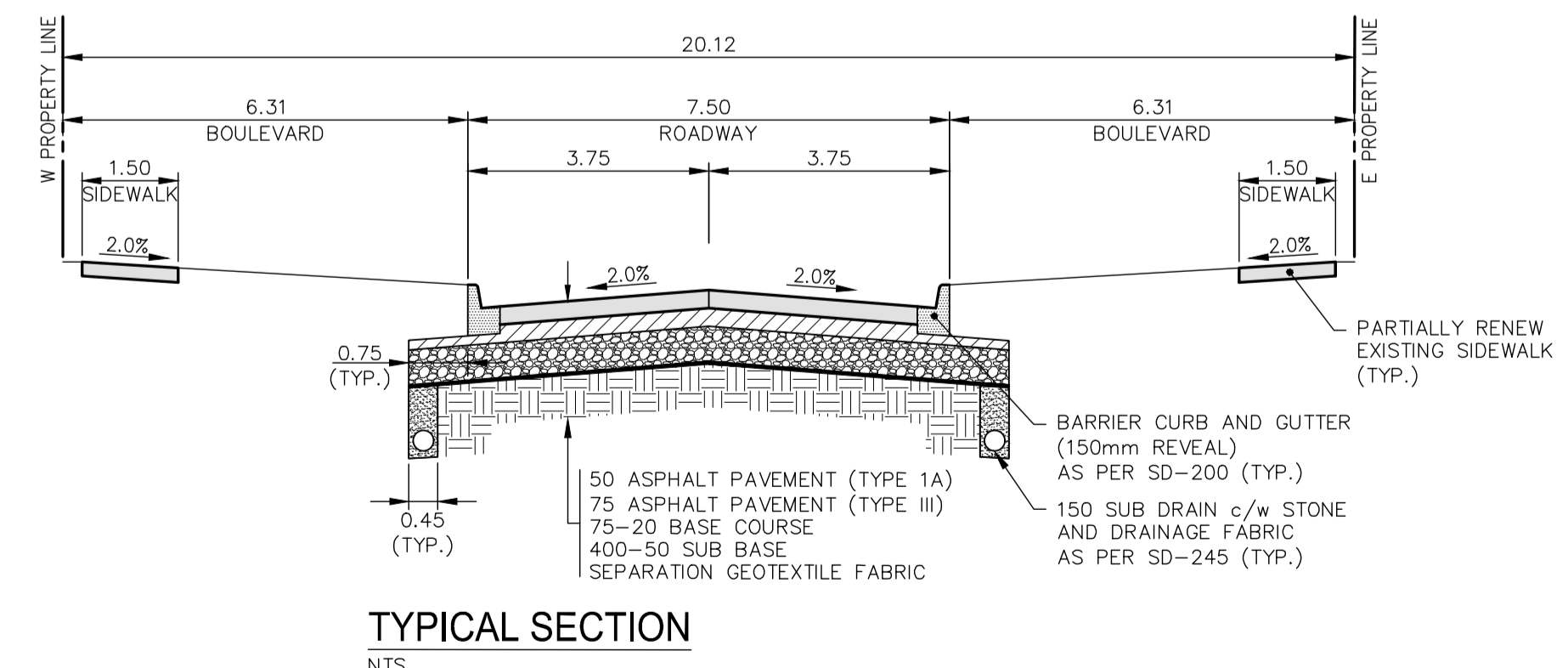


May 07, 2019 - 3:54pm
 P:\2018\18M-01969-00 - 2019 Local Streets Package\19-R-03\Contract 2\10 Drawings\03 Working Drawings\18M-01969-00 Strathcona St Plan&Profile.dwg - Tab:60-2019_Drawing_18M-01969-00-24-RC



- NOTES:**
1. ALL WORK AND MATERIALS TO BE IN ACCORDANCE WITH THE LATEST REVISION OF THE CITY OF WINNIPEG STANDARD CONSTRUCTION SPECIFICATIONS.
 2. CONTRACTOR TO CONFIRM THE LOCATION OF ALL UTILITIES/SERVICES IN THE FIELD PRIOR TO CONSTRUCTION.
 3. ALL ROADWAY DIMENSIONS SHOWN ARE TO BACK OF CURB.
 4. RENEW CURB AND SIDEWALK AS IDENTIFIED BY CONTRACT ADMINISTRATOR.
 5. ALL PRIVATE WALKWAYS TO BE ADJUSTED TO NEW SIDEWALK OR TOP OF CURB ELEVATION, AS DIRECTED BY THE CONTRACT ADMINISTRATOR.
 6. ADJUST MH FRAMES, CB RIMS, AND VALVES TO NEW GRADES, AS REQUIRED.
 7. MODIFIED BARRIER CURB TO BE CONSTRUCTED AT ALL INTERSECTION RADII AND BACK LANE RADII.
 8. INSTALL 40mm LIP CURB THROUGH ALL RESIDENTIAL APPROACHES.
 9. LAMP STANDARDS, HYDRO POLES, AND ANCHORS THAT REQUIRE TEMPORARY SUPPORT, REMOVAL OR REPLACEMENT, TO BE DONE SO AT THE EXPENSE OF THE CONTRACTOR AS NECESSARY.
 10. CONTRACTORS TO TAKE PRECAUTIONARY STEPS TO PROTECT EXISTING TREES WITHIN THE LIMITS OF CONSTRUCTION FROM DAMAGE FROM CONSTRUCTION ACTIVITIES AS OUTLINED IN THE SPECIFICATIONS.
 11. ALL BOULEVARDS TO BE SODDED UNLESS OTHERWISE NOTED.
 12. ADJUST ALL WATER VALVES, HYDRANTS, MANHOLES, AND CATCH BASINS IN WORK AREA TO GRADE.

| LEGEND-PLAN | PROPOSED | EXISTING | LEGEND-PROFILE | PROPOSED | EXISTING |
|--------------------------|----------|----------|----------------------------------|----------|--------------------|
| WATER MAIN | | | IRON BAR | | |
| LAND DRAINAGE SEWER | | | HYDRO POLE & LIGHT STANDARD | | |
| WASTE WATER SEWER | | | LIGHT STANDARD OR TRAFFIC SIGNAL | | |
| HYDRO | | | HYDRO POLE | | |
| M.T.S. | | | CURB RAMP | | |
| GAS | | | DETECTABLE WARNING SURFACE TILE | | |
| SIGNALS | | | EDGE OF SIDEWALK | | |
| MANHOLE | | | FENCE | | |
| CATCH BASIN | | | PROPERTY LINE | | |
| CURB INLET | | | EDGE OF ASPHALT | | |
| UTILITIES ADJUSTED | | | EDGE OF CONCRETE | | |
| PLUG | | | MODIFIED BARRIER CURB | | |
| HYDRANT | | | BARRIER CURB | | |
| VALVE | | | BARRIER CURB AND GUTTER | | |
| CURB STOP | | | CONC SIDEWALK | | WEST SIDEWALK |
| GROUND GRADE | | | CONCRETE SLAB | | EAST SIDEWALK |
| (231.000) PAVEMENT GRADE | | | ASPHALT | | ROADWAY CENTRELINE |
| ANCHOR | | | MILLED SURFACE | | WEST GUTTER |
| #111 CIVIC ADDRESS | | | ASPHALT JOINT REPAIR | | EAST GUTTER |
| EXISTING | | | | | |



LOCATIONS APPROVED UNDERGROUND STRUCTURES

SIGNED BY: _____ DATE: _____

LOCATION OF UNDERGROUND STRUCTURES AS SHOWN ARE BASED ON THE BEST INFORMATION AVAILABLE BUT NO GUARANTEE IS GIVEN THAT ALL EXISTING UTILITIES ARE SHOWN OR THAT THE GIVEN LOCATIONS ARE EXACT CONFIRMATION OF EXISTENCE AND EXACT LOCATION OF ALL SERVICES MUST BE OBTAINED FROM THE INDIVIDUAL UTILITIES BEFORE PROCEEDING

| NO. | REVISIONS | DATE | BY |
|-----|---------------------------|----------|------|
| A | PRELIMINARY DESIGN REVIEW | 20190211 | R.H. |
| B | DETAILED DESIGN REVIEW | 20190502 | R.H. |
| C | ISSUED FOR TENDER | 20190502 | R.H. |

wsp

WSP Canada Group Limited
 Suite 111 - 93 Lombard Ave
 Winnipeg, MB R3B 3B1
 t. 204.943.3178
 f. 204.943.4948
 www.wsp.com

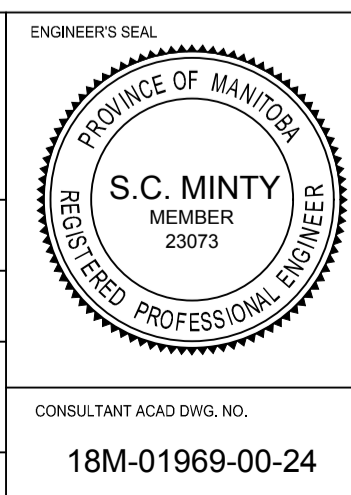
DESIGNED BY: R.H./K.G. CHECKED BY: V.M.
 DRAWN BY: R.H./K.G. APPROVED BY: S.M.

WORK SCALE: 1:250
 VERTICAL: 1:10

RELEASED FOR CONSTRUCTION: _____ DATE: _____

NO. REVISIONS DATE BY

DATE: JANUARY 2019



THE CITY OF WINNIPEG
 PUBLIC WORKS DEPARTMENT
 ENGINEERING SERVICES DIVISION

2019 STREET RENEWAL PROGRAM

STRATHCONA STREET

ASPHALT RECONSTRUCTION
 STA. 3+40 TO STA. 4+44.78

BID NO. 60-2019

CITY DRAWING NUMBER: 24 OF 14

CONSULTANT ACAD DWG. NO. 18M-01969-00-24

METRIC
 WHOLE NUMBERS INDICATE MILLIMETRES
 DECIMALIZED NUMBERS INDICATE METRES

ENGINEERS GEOSCIENTISTS MANITOBA
 Certificate of Authorization
WSP Canada Group Limited
 No. 6657

FOR TENDER PURPOSES ONLY
NOT FOR CONSTRUCTION