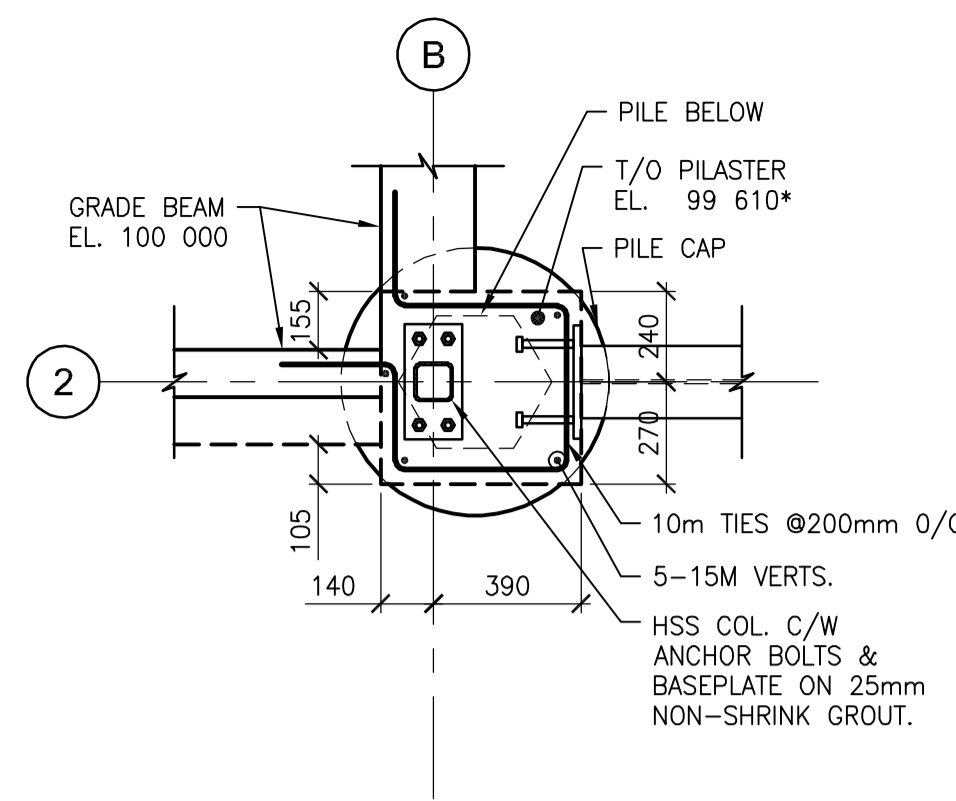
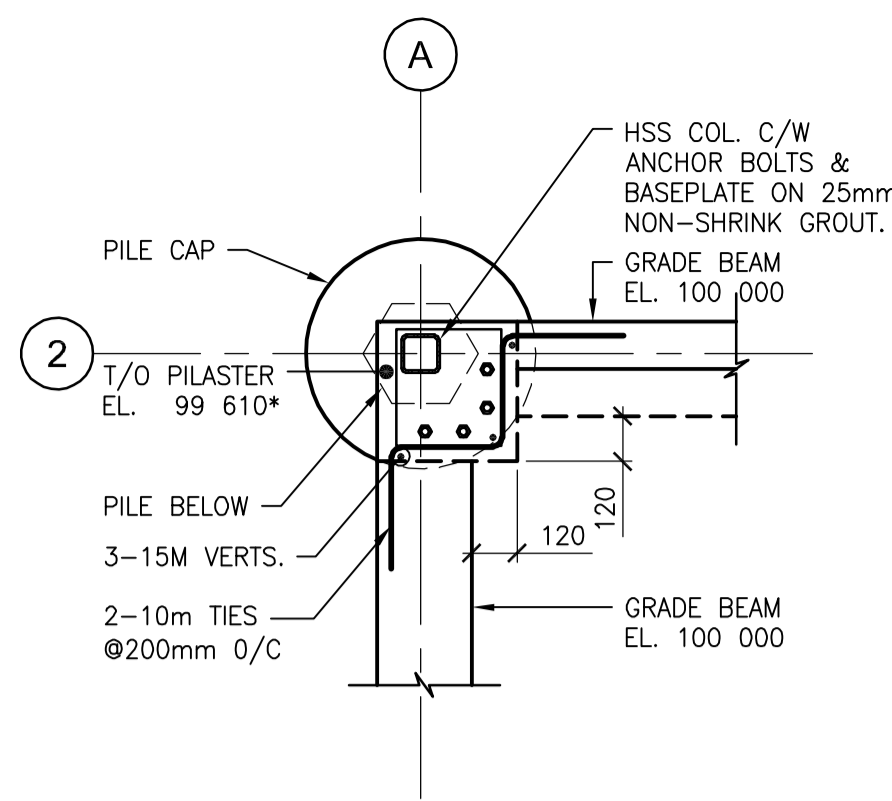


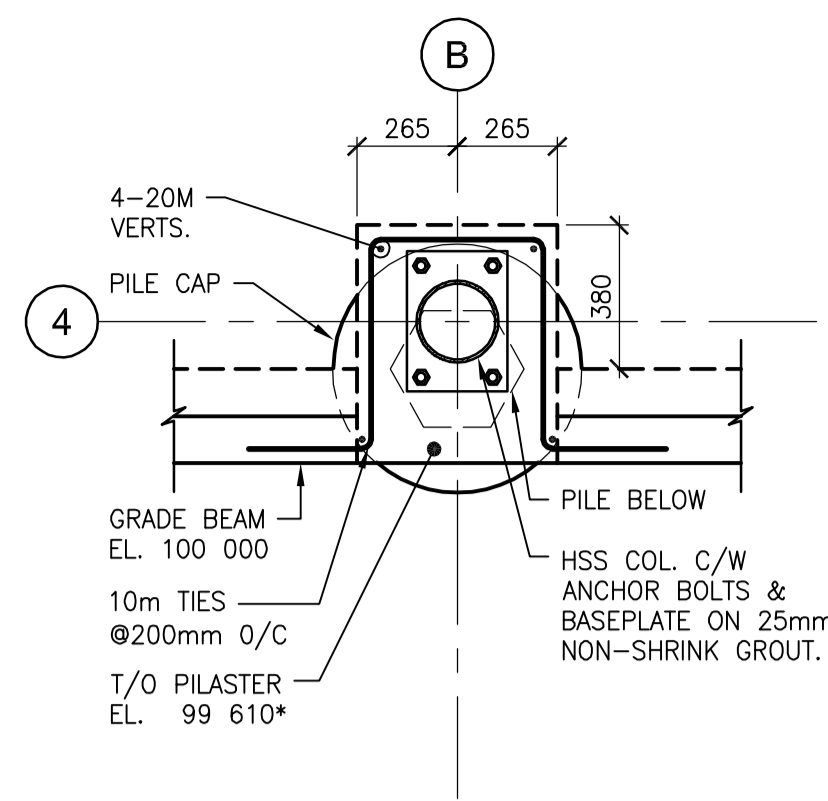
A DETAIL
S3.1 SCALE: 1:20



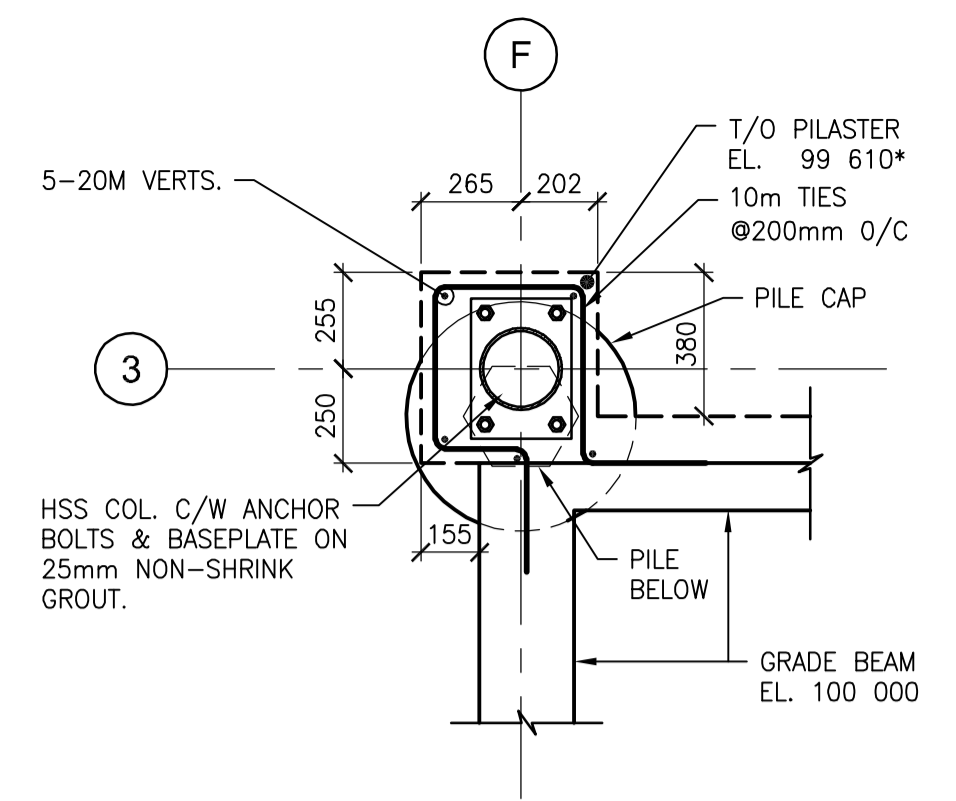
B DETAIL
S3.1 SCALE: 1:20



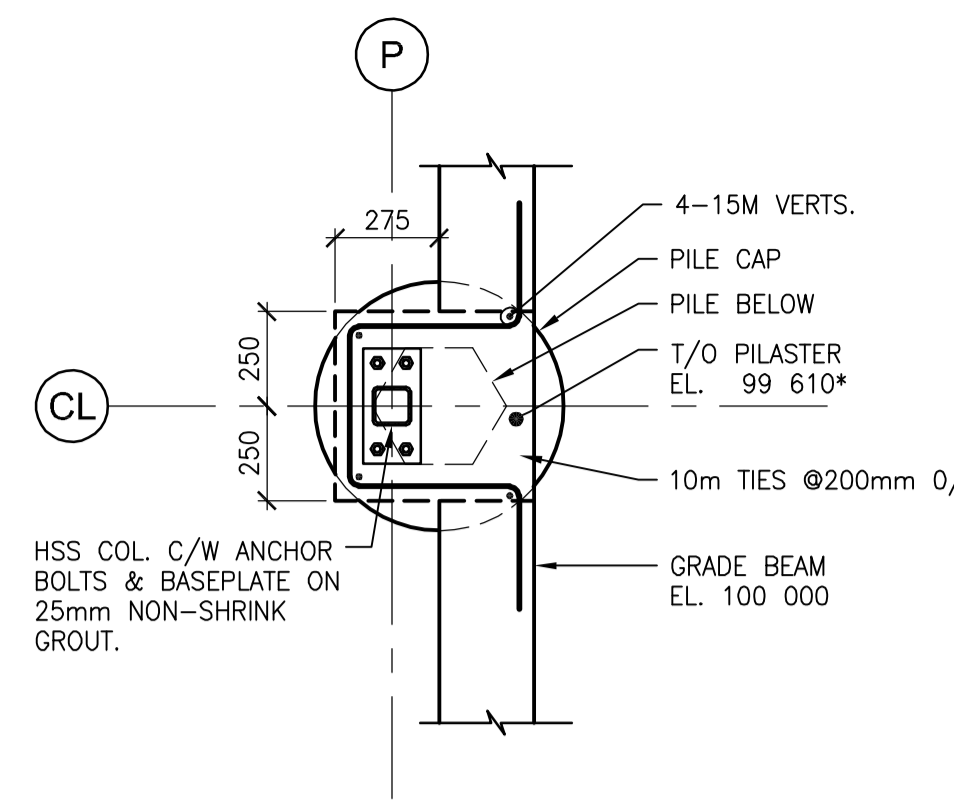
C DETAIL
S3.1 SCALE: 1:20



D DETAIL
S3.1 SCALE: 1:20

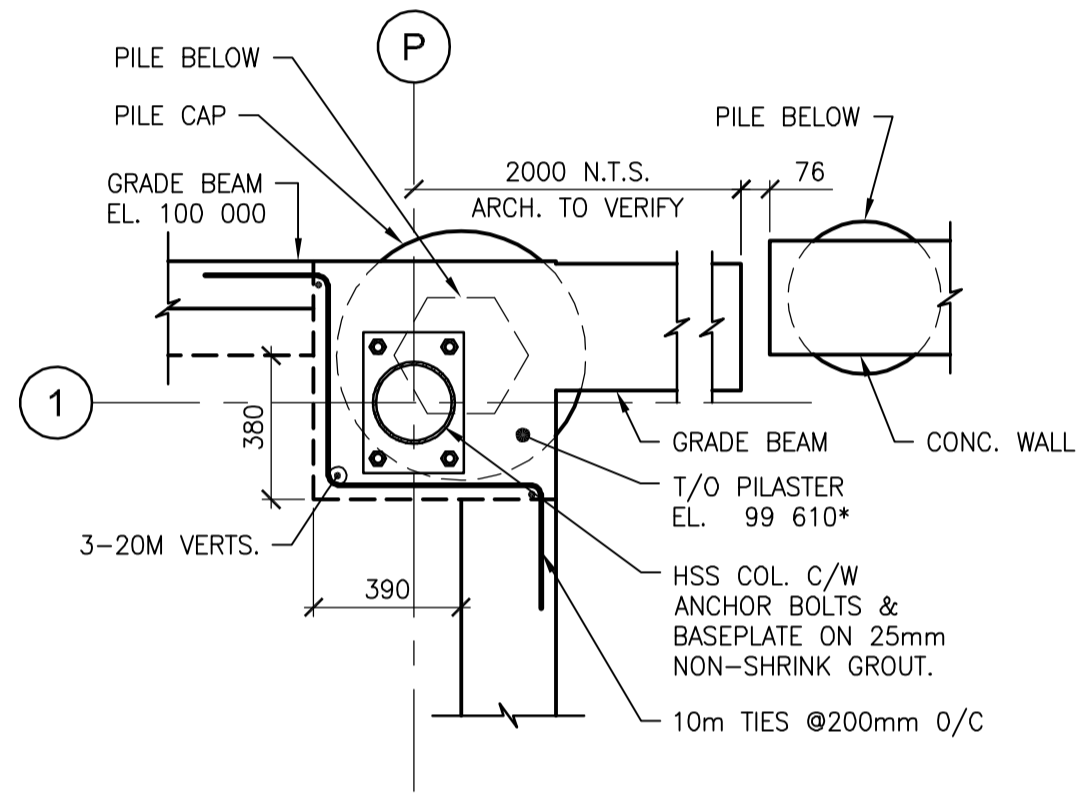


E DETAIL
S3.1 SCALE: 1:20

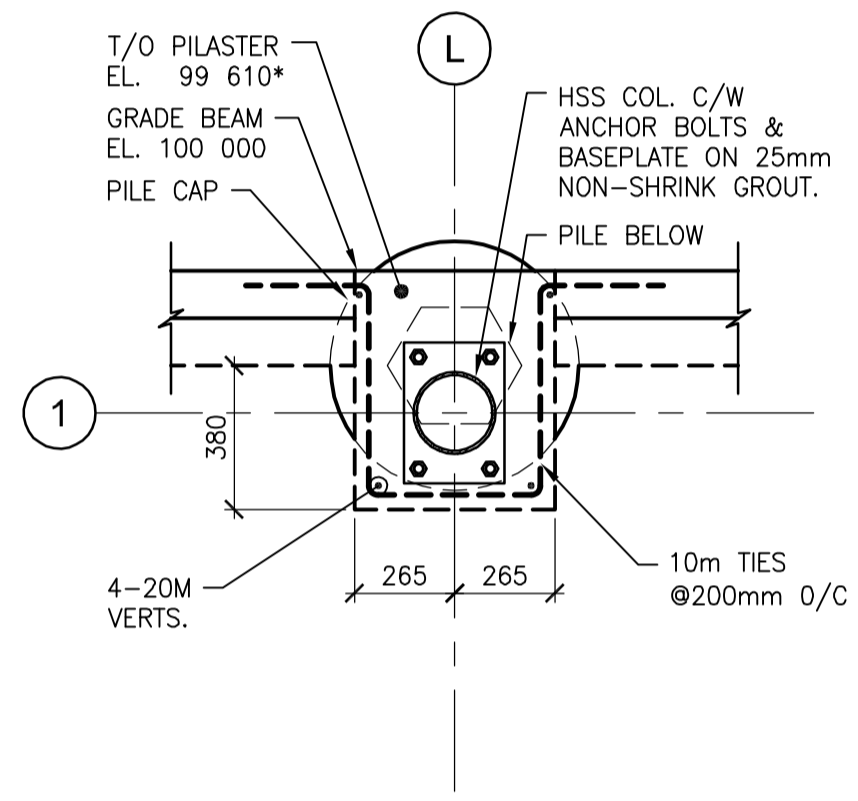


F DETAIL
S3.1 SCALE: 1:20

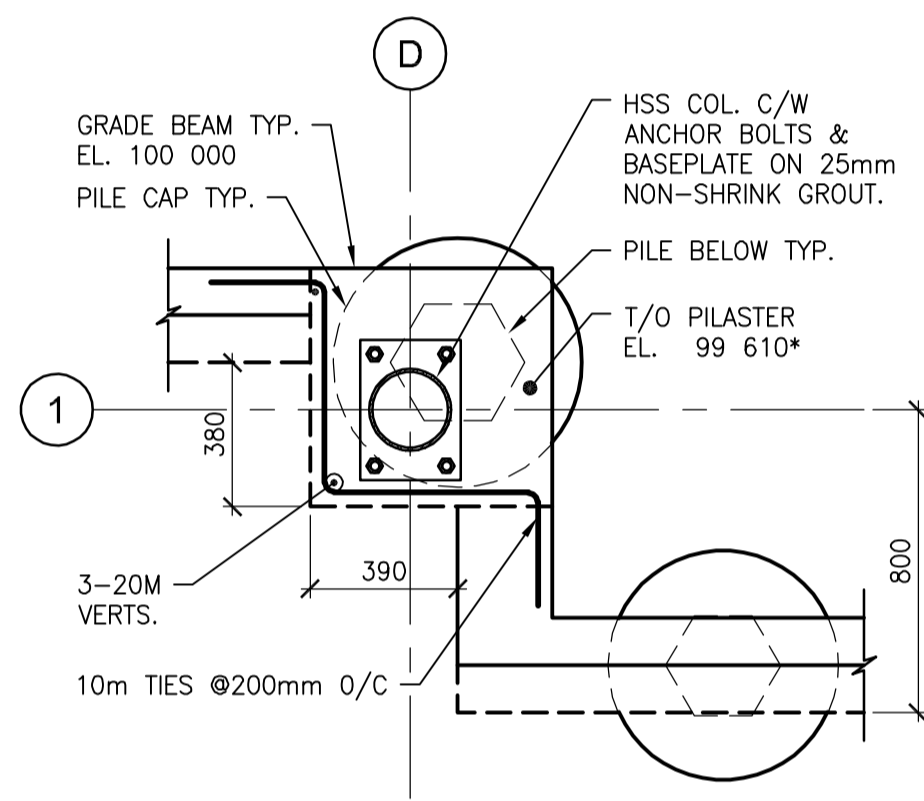
NOTE:
-CONTRACTOR TO CONFIRM UP-STAND HEIGHTS WITH HOLLOWCORE CAMBER AND TOPPING.
-T/O PILASTER EL. 99 610* TO BE CONFIRMED BY CONTRACTOR.



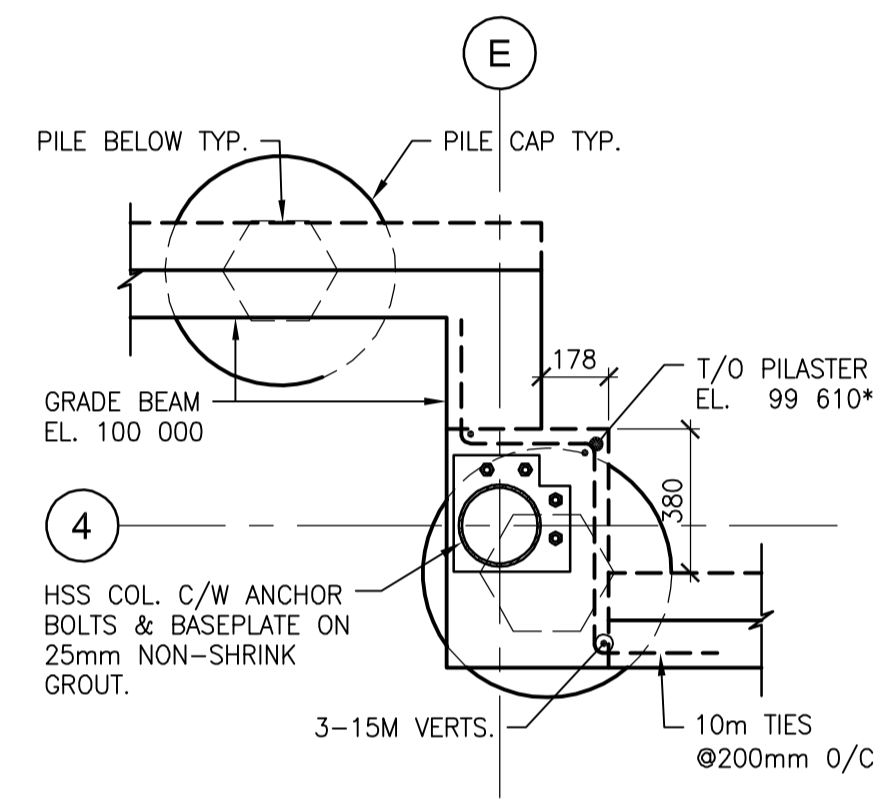
G DETAIL
S3.1 SCALE: 1:20



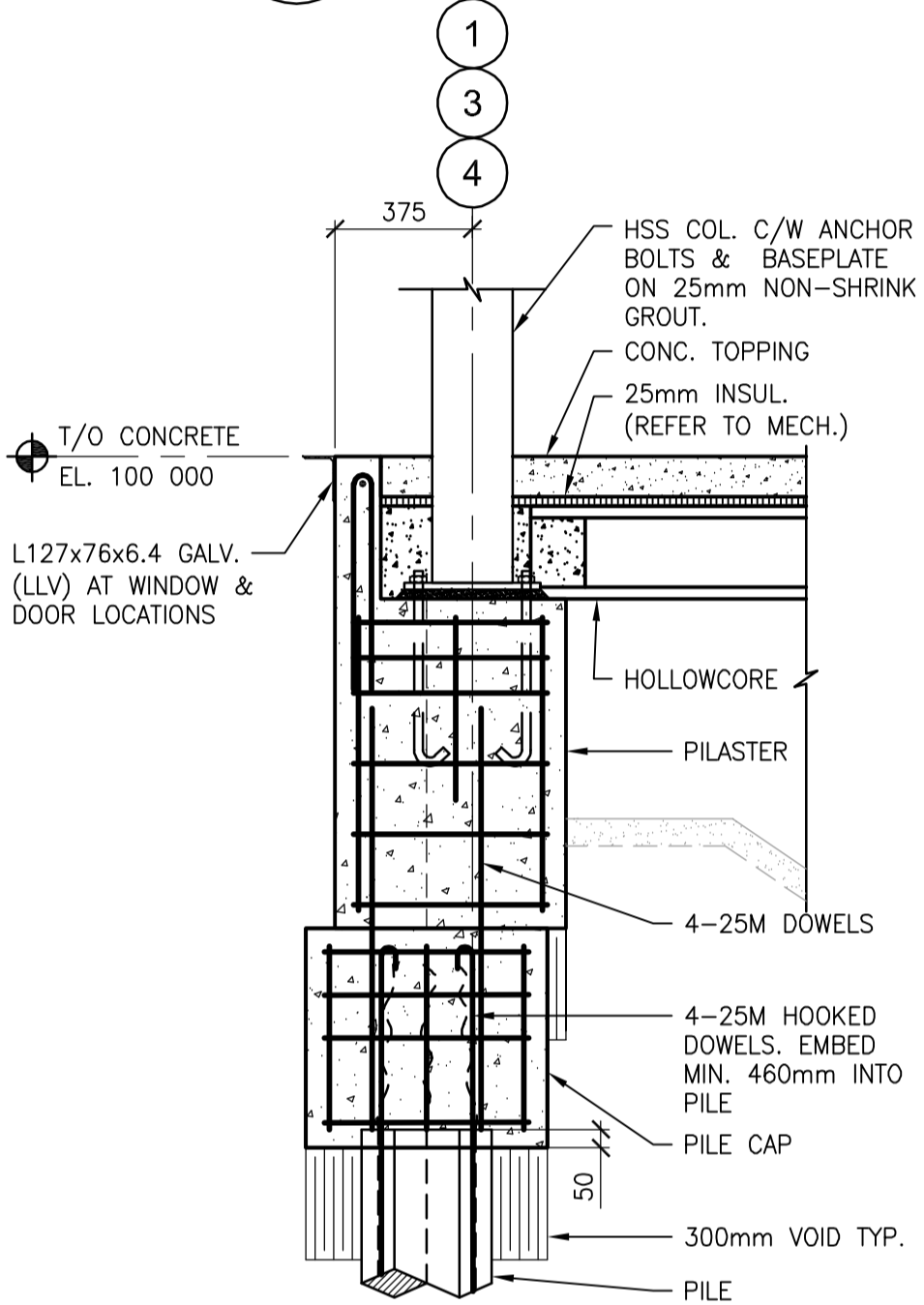
H DETAIL
S3.1 SCALE: 1:20



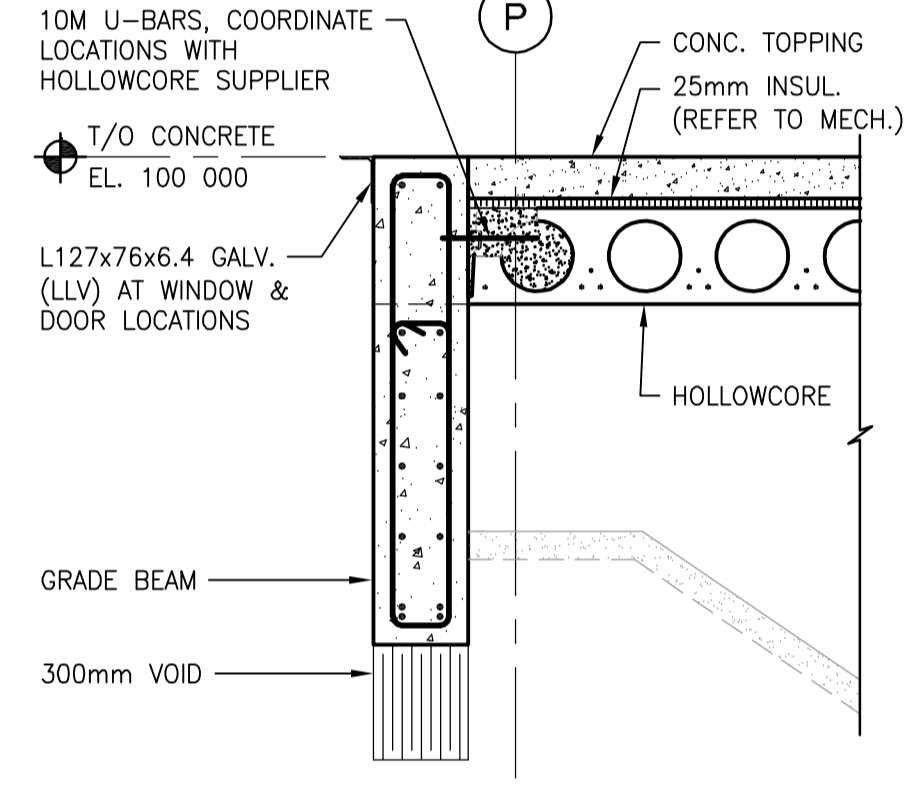
I DETAIL
S3.1 SCALE: 1:20



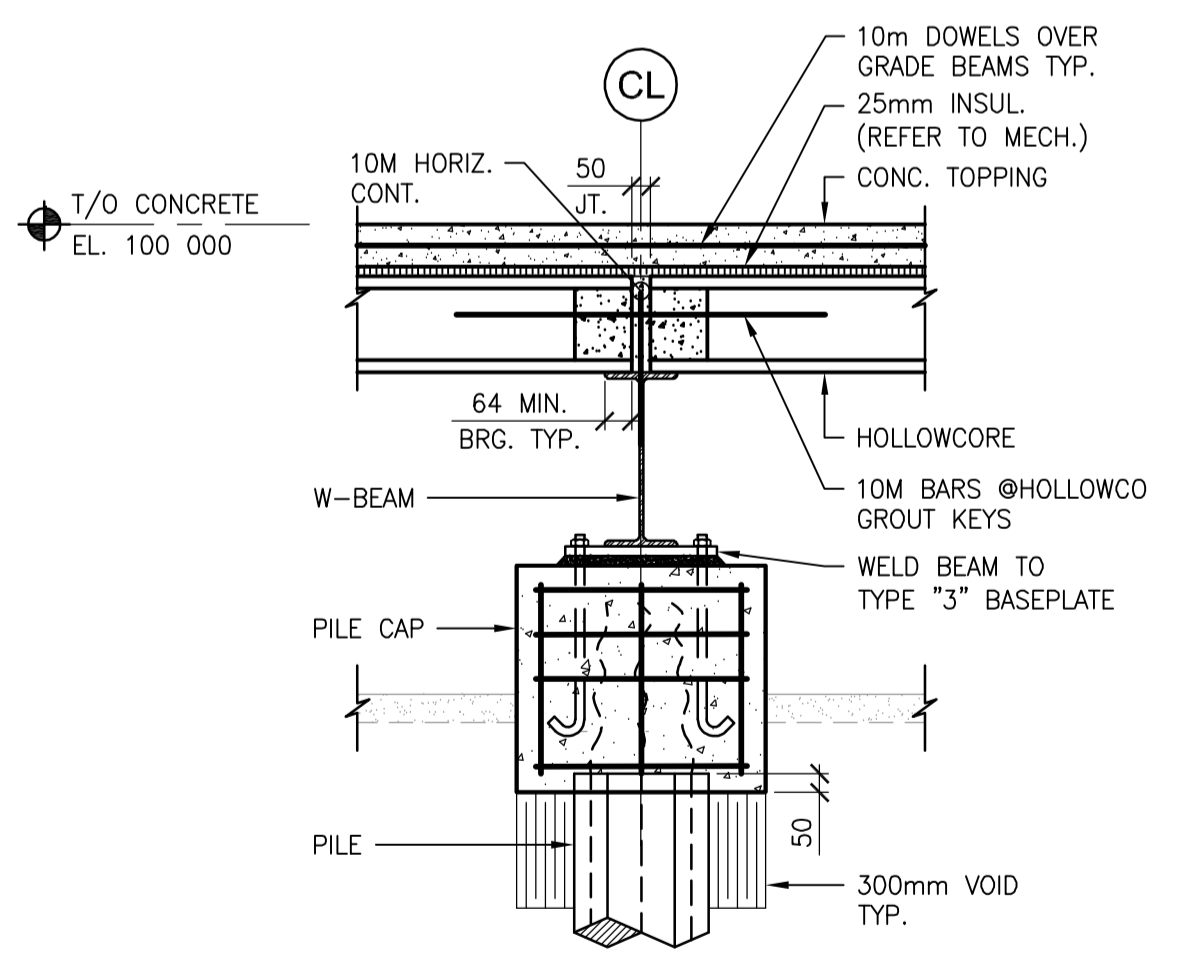
J DETAIL
S3.1 SCALE: 1:20



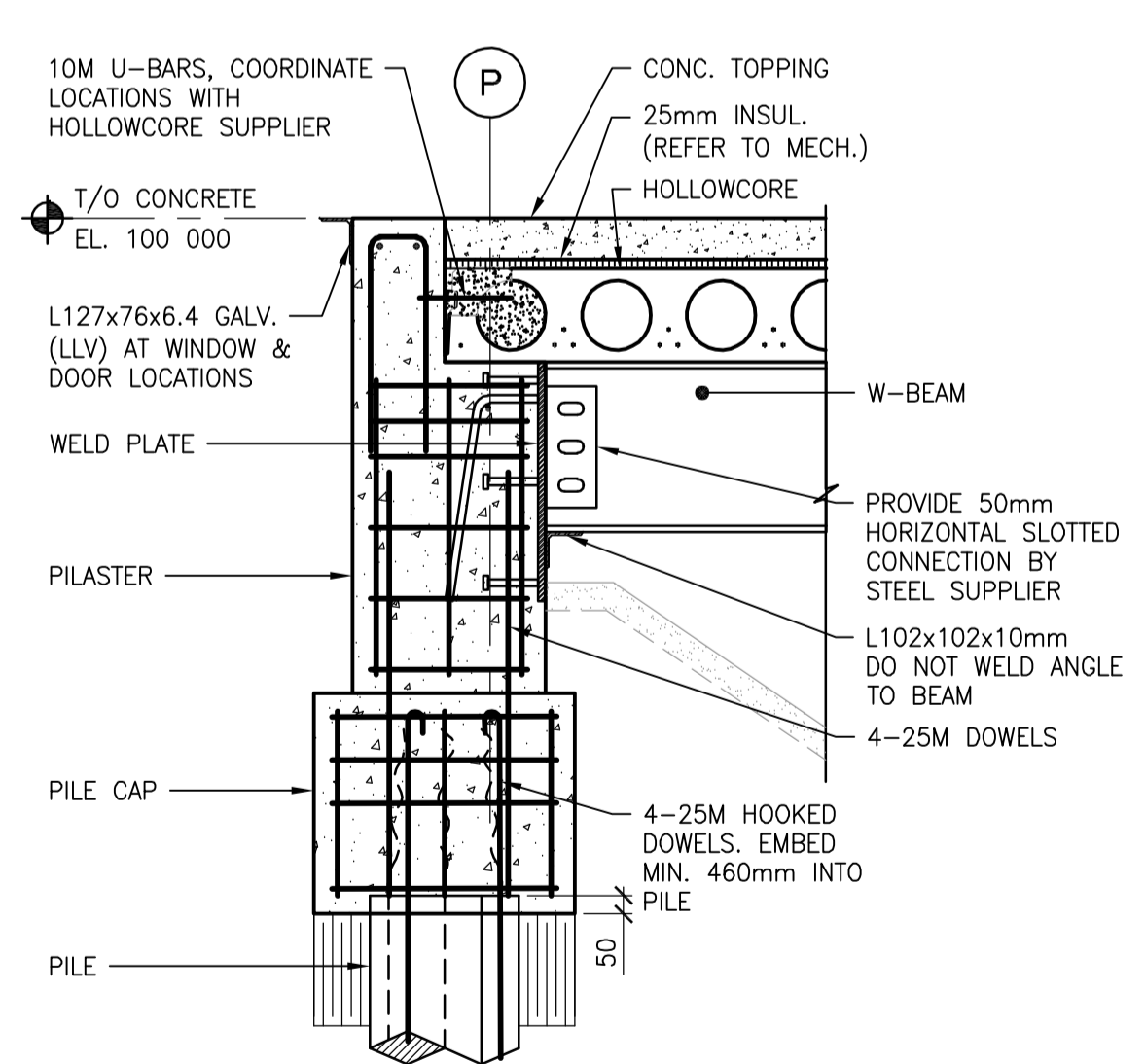
1 SECTION
S3.1 SCALE: 1:20



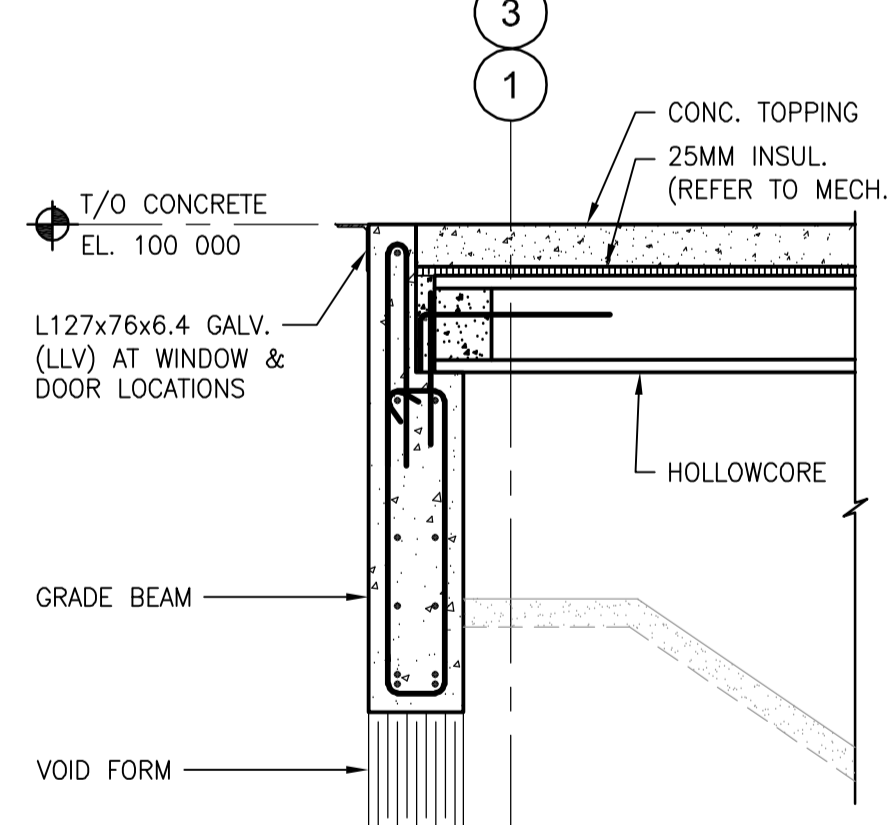
2 SECTION
S3.1 SCALE: 1:20



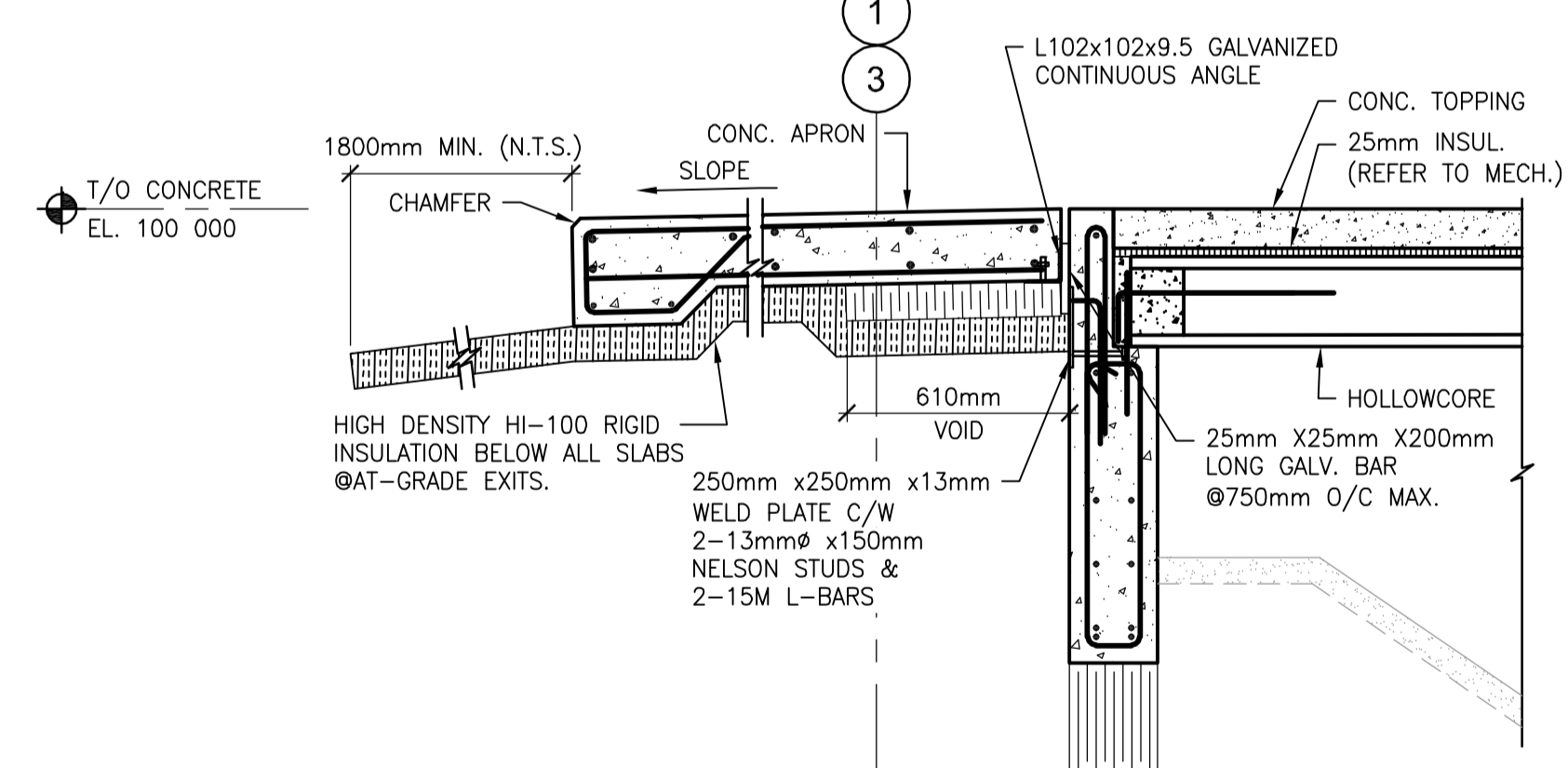
3 SECTION
S3.1 SCALE: 1:20



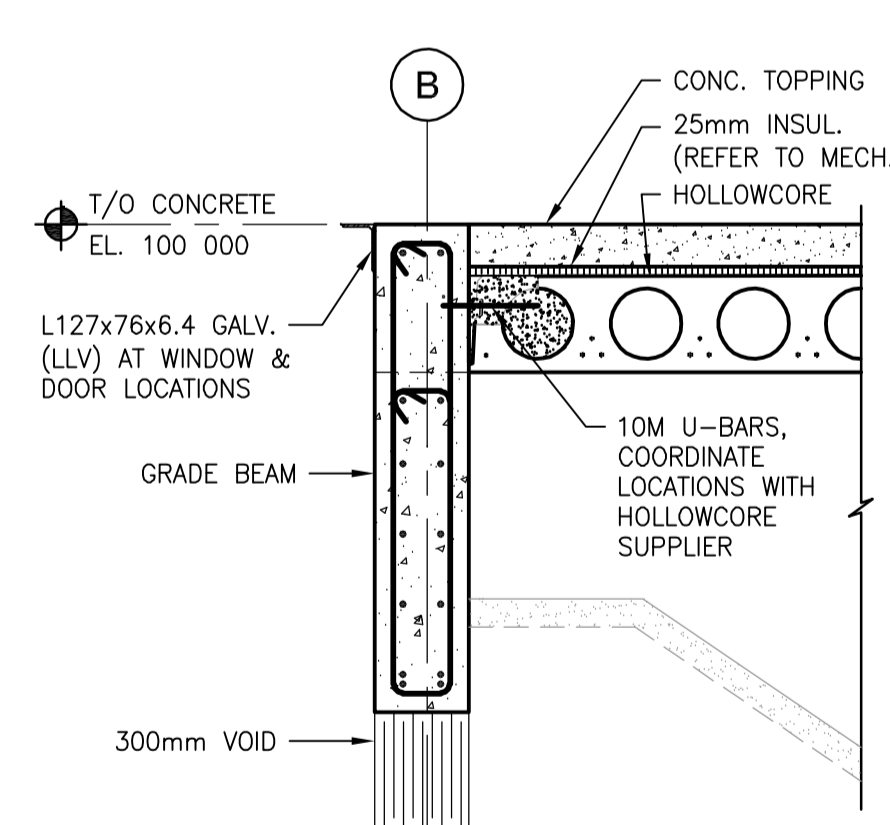
4 SECTION
S3.1 SCALE: 1:20



5 SECTION
S3.1 SCALE: 1:20



6 SECTION
S3.1 SCALE: 1:20



8 SECTION
S3.1 SCALE: 1:20

TOWER PROJECT NO. : 181335
TOWER ENGINEERING GROUP
UNIT 1-1140 WAVERLEY ST. WINNIPEG, MB R3T 0P4
TEL: (204) 925-1150 FAX: (204) 925-1155
EMAIL: towereng@towereng.ca WEB: www.towereng.ca
• WINNIPEG • CALGARY

These design documents are prepared solely for the use by the party with whom the design professional has entered into a contract and there are no representations of any kind made by the design professional to any party with whom the design professional has not entered into a contract. Any use of the drawings, data or electronic data without the expressed written permission of Tower Engineering Inc. is strictly prohibited. The contractor is responsible to verify all dimensions with conditions on the site and report discrepancies to Tower Engineering for adjustment. All prints to be returned.

No.	Date	Issue / Revision	By
4.	2019-07-08	Issued for Construction	LHT
4.	2019-06-26	Issued for 100% Pre-Tender Review	LHT
3.	2019-05-13	Issued for Pre-Tender Review	LHT
2.	2019-02-22	Design Development	LHT
1.	2018-12-17	Schematic Design Review	LHT

Drawn By: BKF
Printing Date:

LM Architectural Group
500-136 Market Ave
Winnipeg, Manitoba
Canada R3B 0P4
t: (204) 942.0681
f: (204) 943.8676
www.lm-architects.com

APEGM
Certificate of Authorization
Tower Engineering Group
No. 4156 Expiry: April 30, 2020

2019-07-16

Drawings and specifications, as instruments of service are the property of the architect, the copyright in the same being reserved to them. No reproduction may be made without the permission of the architect, and when made, must bear their names. All prints to be returned.
The contractor is to verify dimensions and data noted herein with conditions on the site and is held responsible for reporting any discrepancy to the architect for adjustment.

Bill and Helen Norrie Library
Project No.: 2017-082
Tender No.: 542-2019
Address: 15 Poseidon Bay, Winnipeg, MB.

Plan Details & Sections