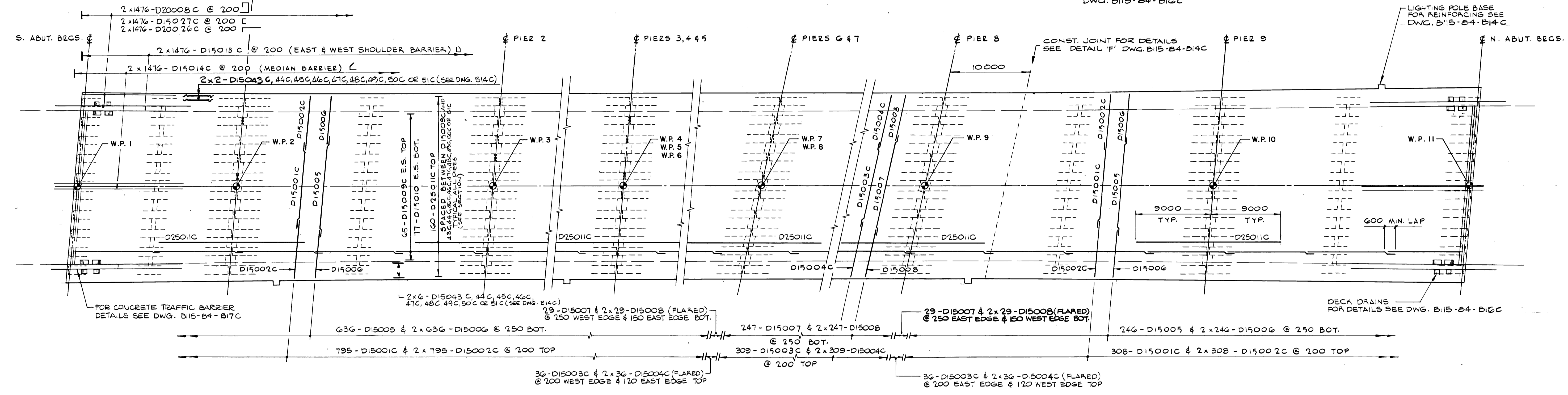
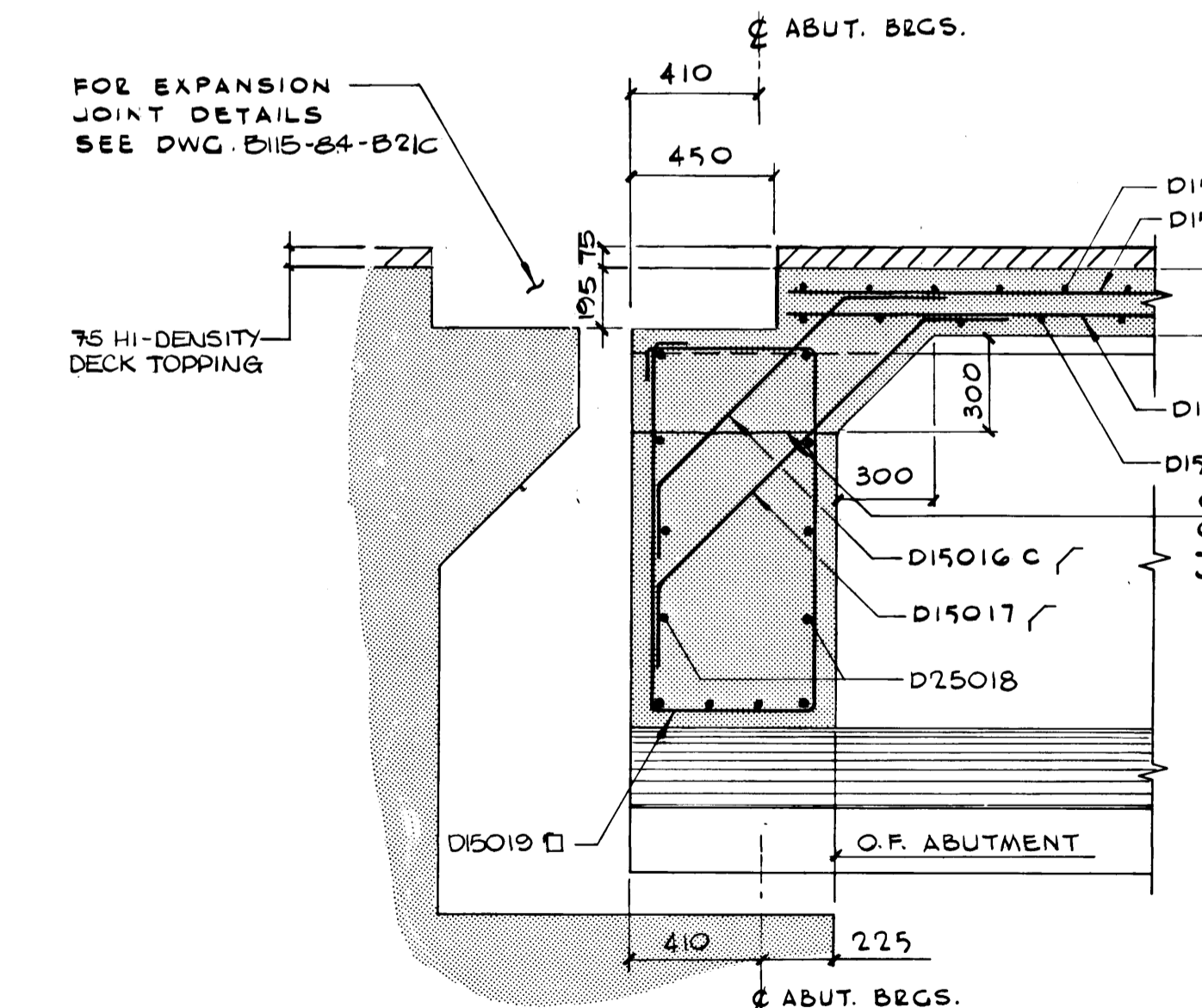


KEY PLAN
SCALE - 1:500

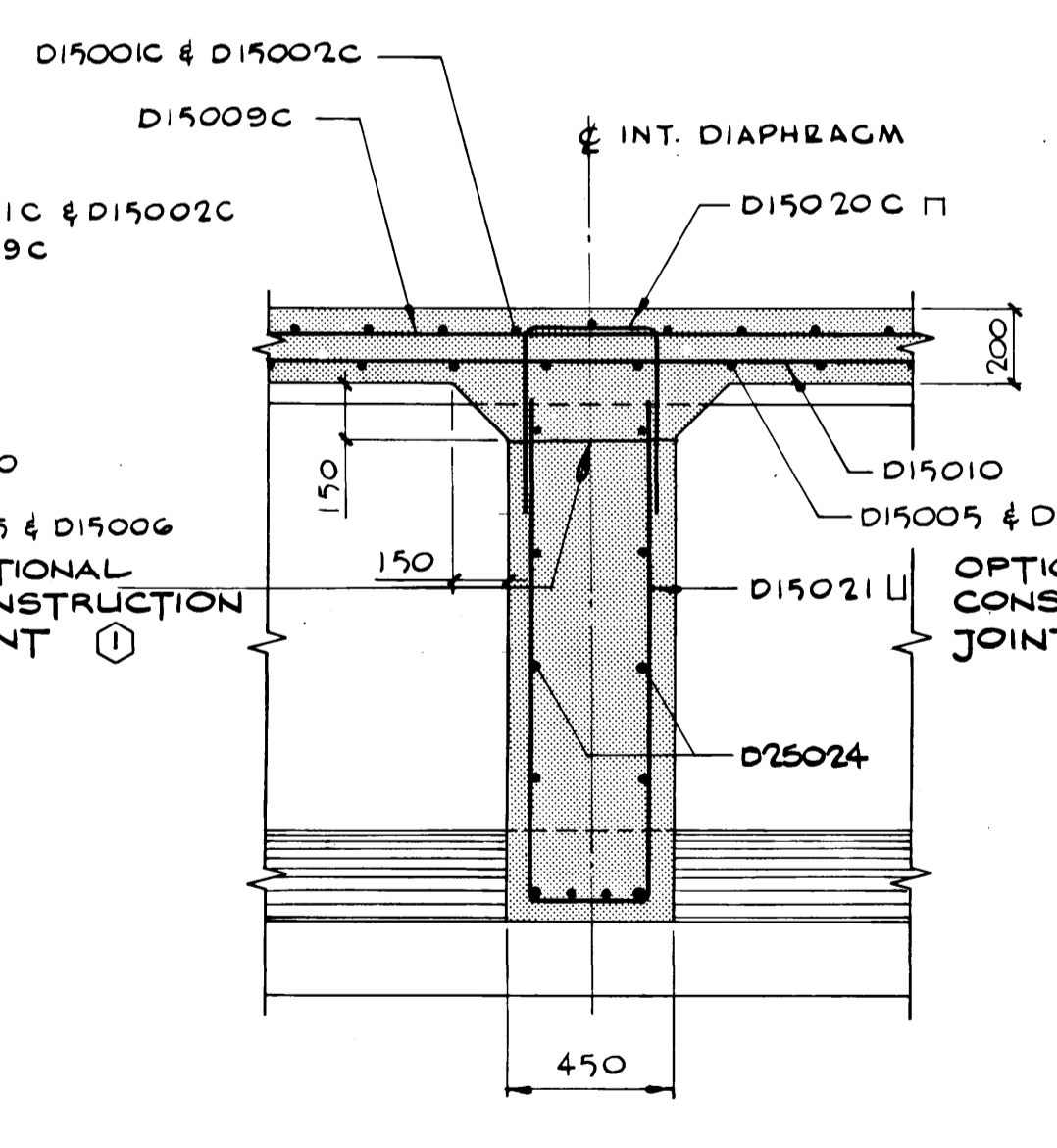


PARTIAL PLAN
SCALE - 1:250



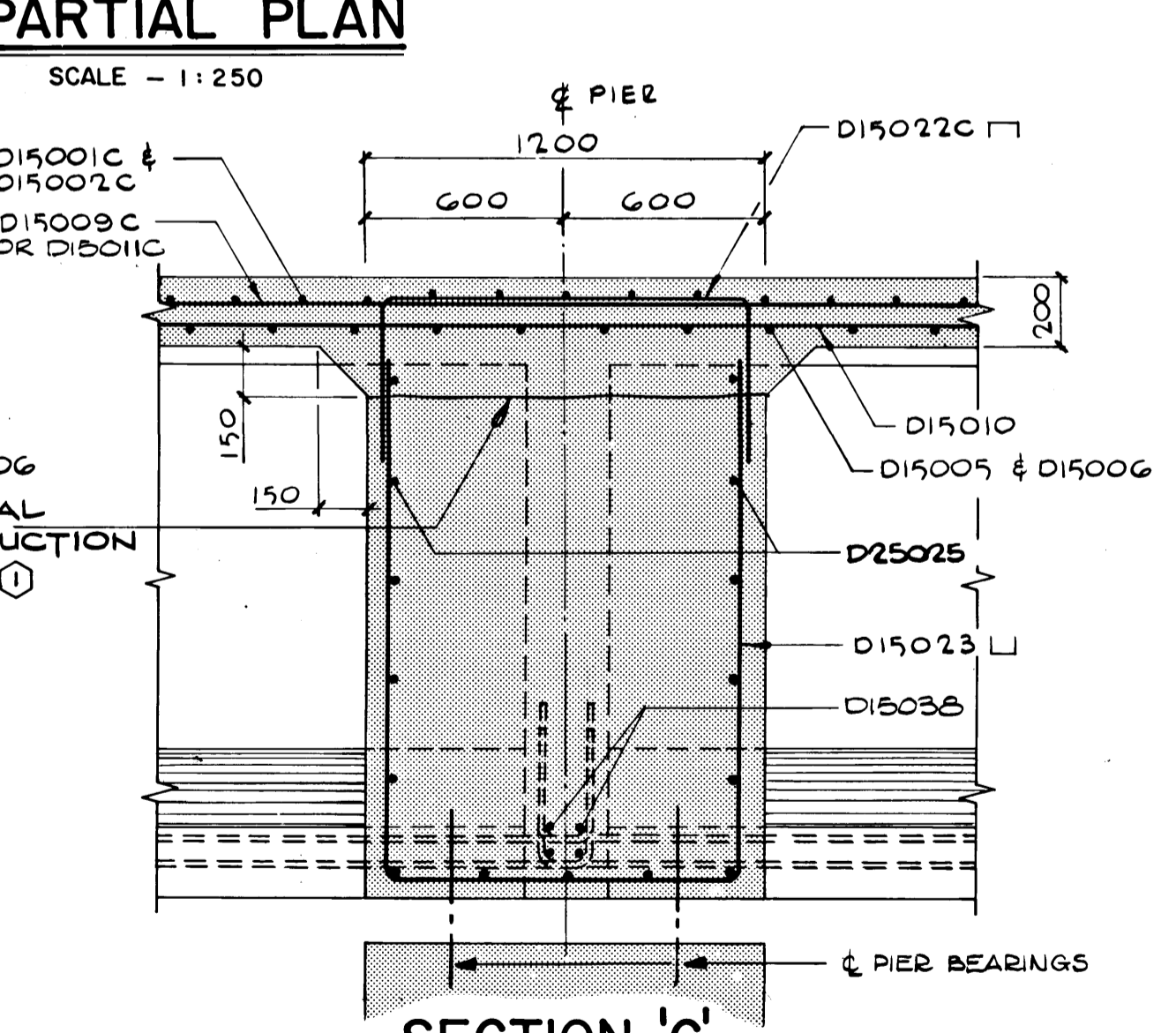
SECTION 'A'
SCALE - 1:20

(SECTION TAKEN PERPENDICULAR TO ϕ ABUT. BRG'S)
TYPICAL DIAPHRAGM AT ABUTMENT



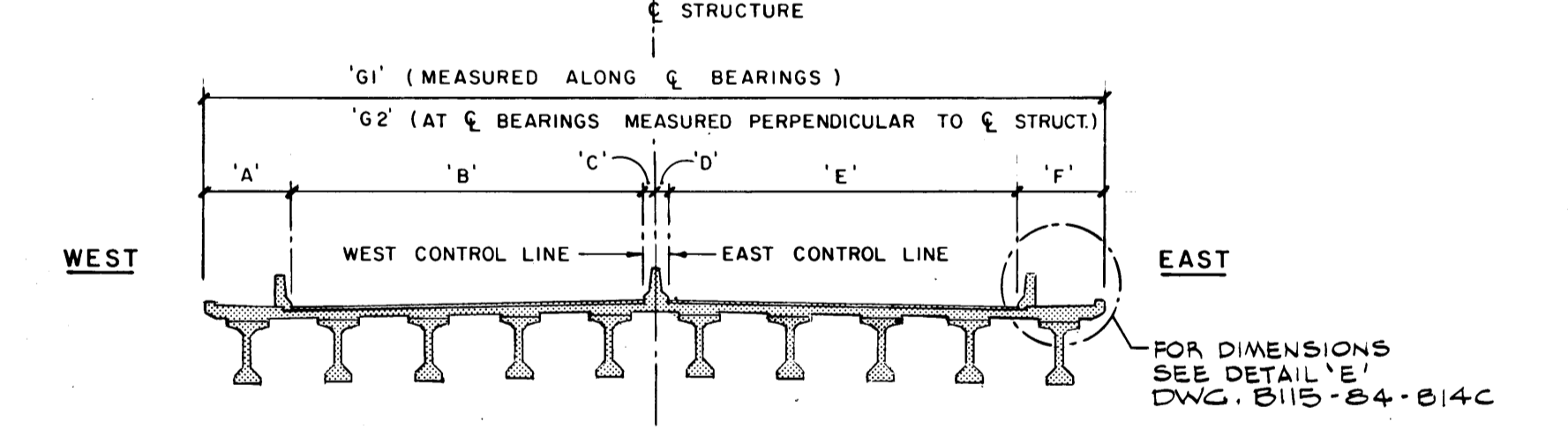
SECTION 'B'
SCALE - 1:20

(SECTION TAKEN PERPENDICULAR TO ϕ INT. DIAPHRAGM)
TYPICAL INTERMEDIATE DIAPHRAGM



SECTION 'C'
SCALE - 1:20

(SECTION TAKEN PERPENDICULAR TO ϕ PIERS)
TYPICAL DIAPHRAGM OVER PIERS



DECK DIMENSIONS AT ϕ BEARINGS								
LOCATION	'A'	'B'	'C'	'D'	'E'	'F'	'G1'	'G2'
S. ABUTMENT	2283	8965	440	862	8888	2286	23724	23634
PIER 1	2284	9042	309	490	9045	2286	23456	23367
PIERS 2, 3, 4 & 5	2284	9045	306	306	9045	2284	23270	23181
PIERS 6, 7 & 8	2330	9229	312	312	9229	2330	23142	23179
PIER 9	2286	9016	586	584	9000	2282	23754	23664
N. ABUTMENT	2286	8566	1378	1370	8555	2282	24437	24344

NOTE: FOR SCREED ELEVATIONS SEE DRAWING B115-84-B15C

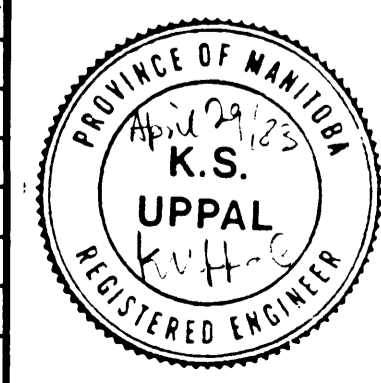
B-5544-13
METRIC

WHOLE NUMBERS INDICATE MILLIMETRES
DECIMALIZED NUMBERS INDICATE METRES

**Renamed the
SLAW REBCHUK BRIDGE
on October 29, 1984**

RECORD DRAWING

1	OPTIONAL CONST JOINTS ADDED	83-8-5	J.T.
2	REVISED TO RECORD DRAWING	FEB/86	J.S.
NO.	REVISIONS	DATE	APP.



the um group
Underwood McLellan Ltd.
Consulting Engineers and Planners

DESIGNED BY: K.S.U. DRAWN BY: A.T.
CHECKED BY: K.S.U. DATE: JUNE 15, 1983.
JOB No: 0265-204-05

APPROVED BY: *[Signature]* DATE: *[Date]*

THE CITY OF WINNIPEG
WORKS & OPERATIONS
DIVISION
STREETS & TRANSPORTATION DEPARTMENT

SALTER STREET BRIDGE REPLACEMENT PROJECT
CONCRETE GIRDER ALTERNATIVE
DECK REINFORCING I

AUTHORIZED BY: *[Signature]* 1983-06-16
STREETS & BRIDGES ENGINEER DATE

ACCEPTED BY: *[Signature]* 1983 06 16
BRIDGE ENGINEER DATE

SCALE: AS NOTED DRAWING NO. B115-84-B13C