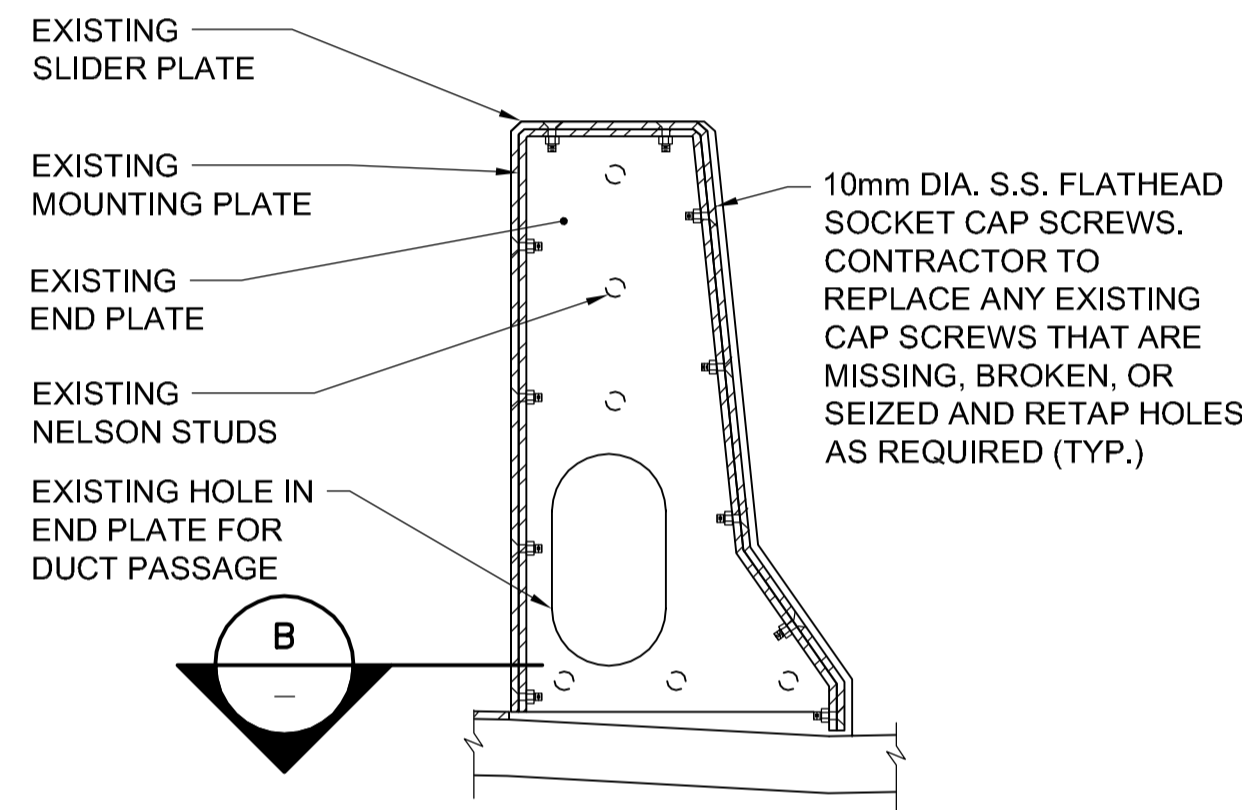


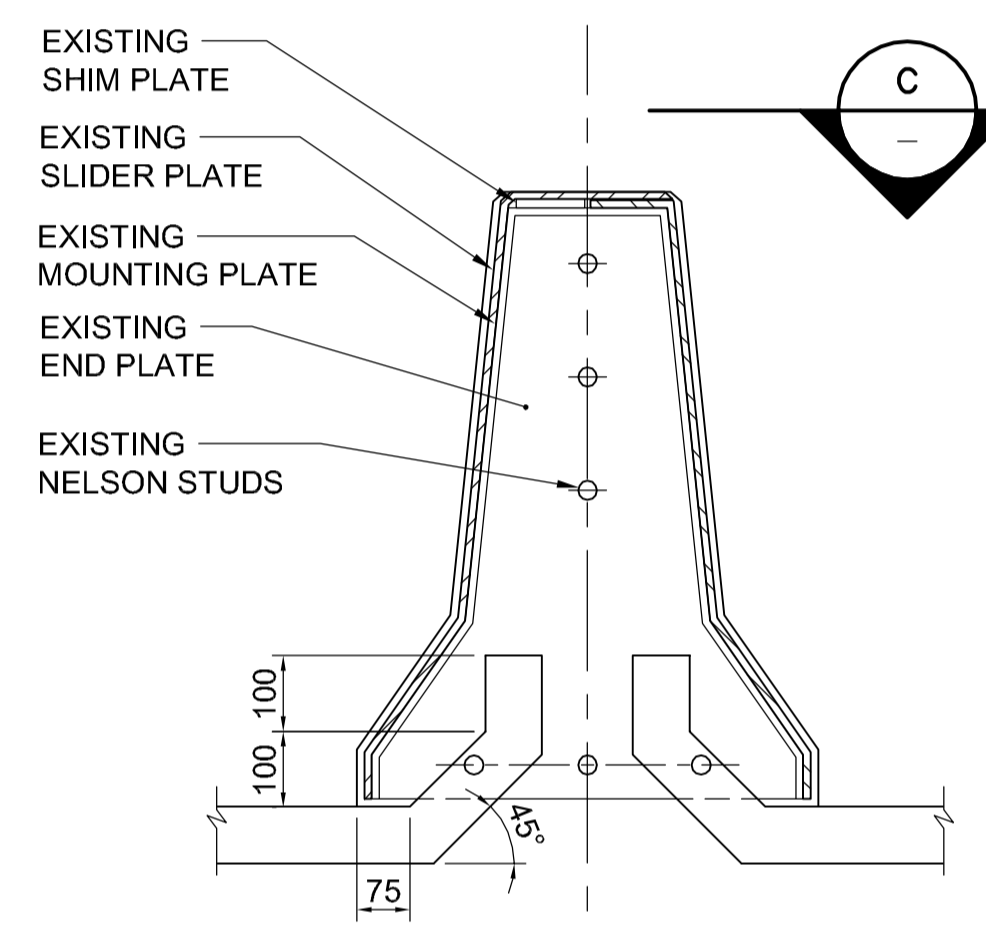
ELEVATION - EXPANSION JOINT ASSEMBLY

SCALE 1:25

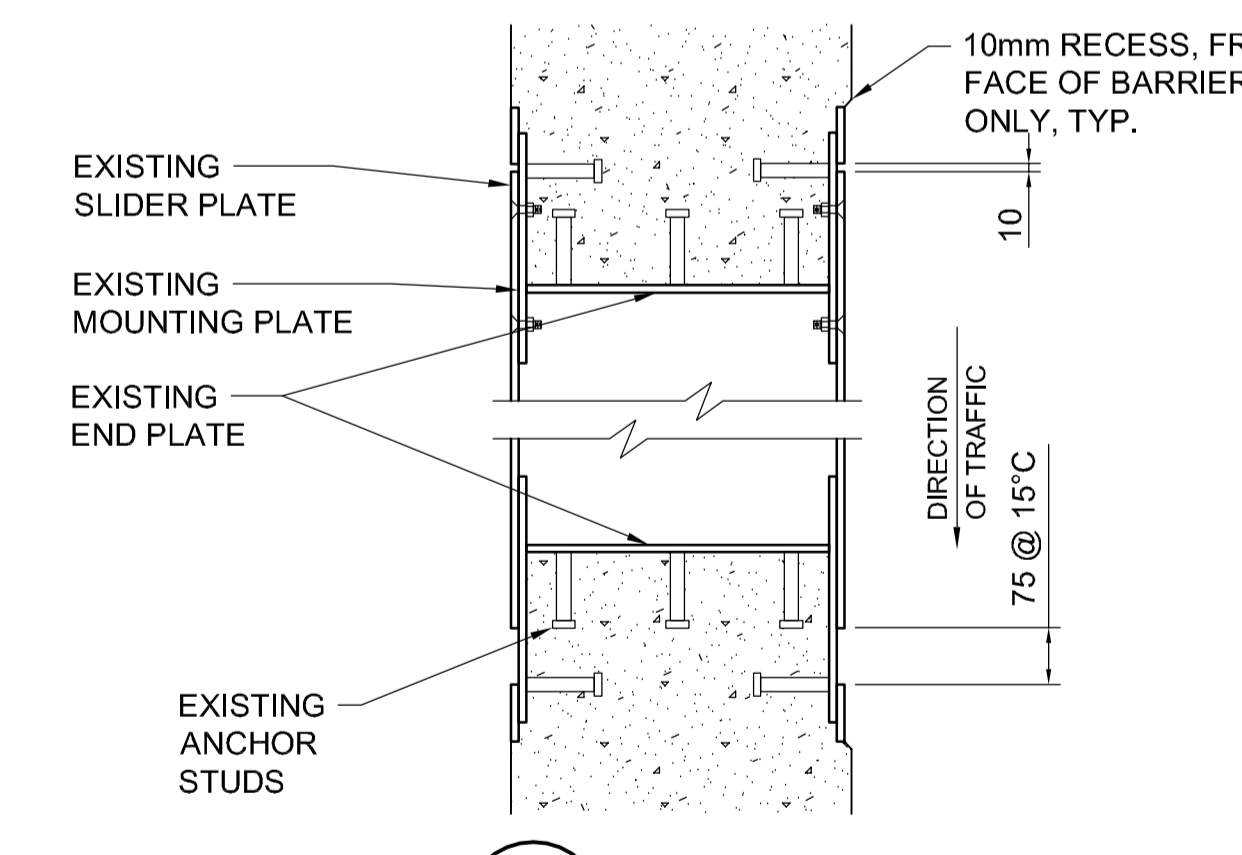
- NOTE:
- REFER TO REFERENCE DRAWING B115-84-B21C FOR MORE DETAILS
 - ALL EXISTING PARAPET, SIDEWALK AND BARRIER COVER PLATES AS WELL AS SLIDER, MOUNTING AND END PLATES ARE 10mm THICK.



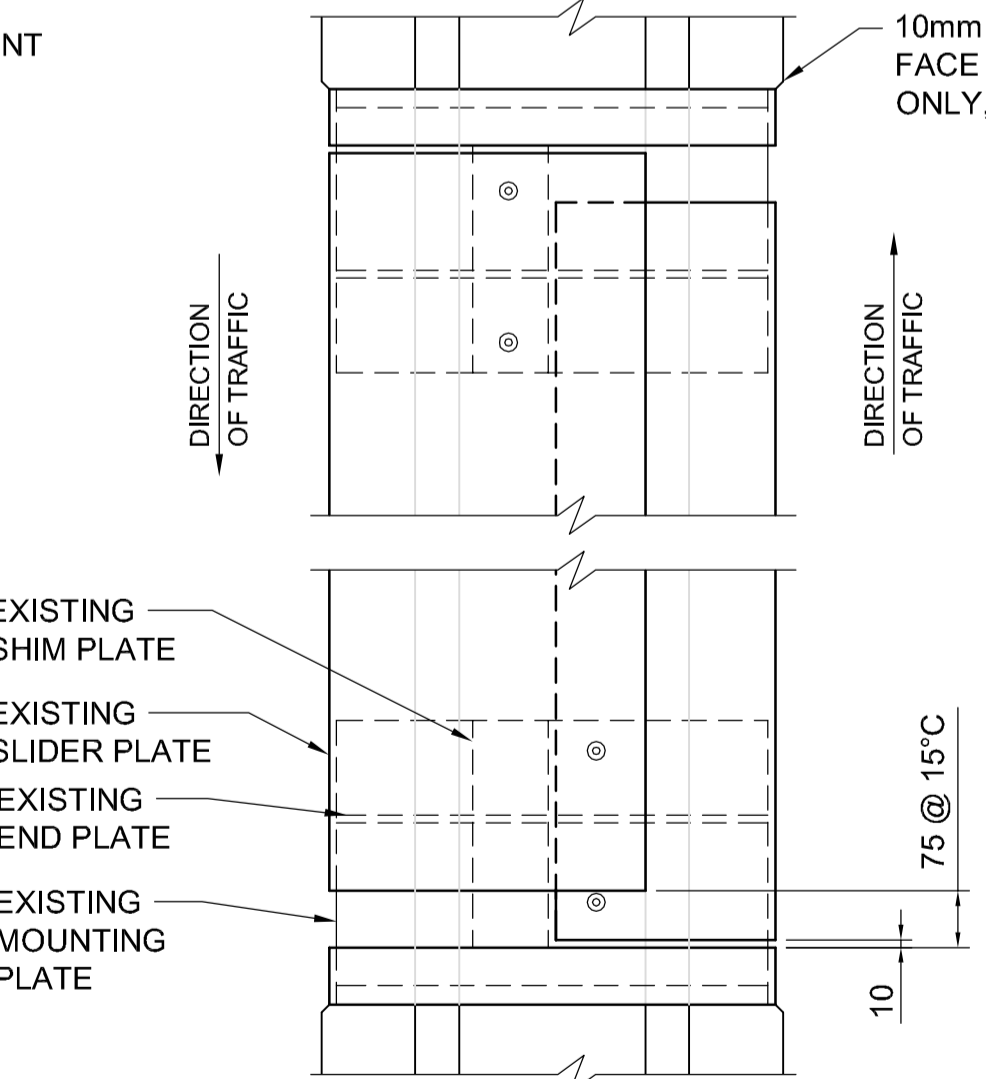
1 DETAIL
SCALE 1:10



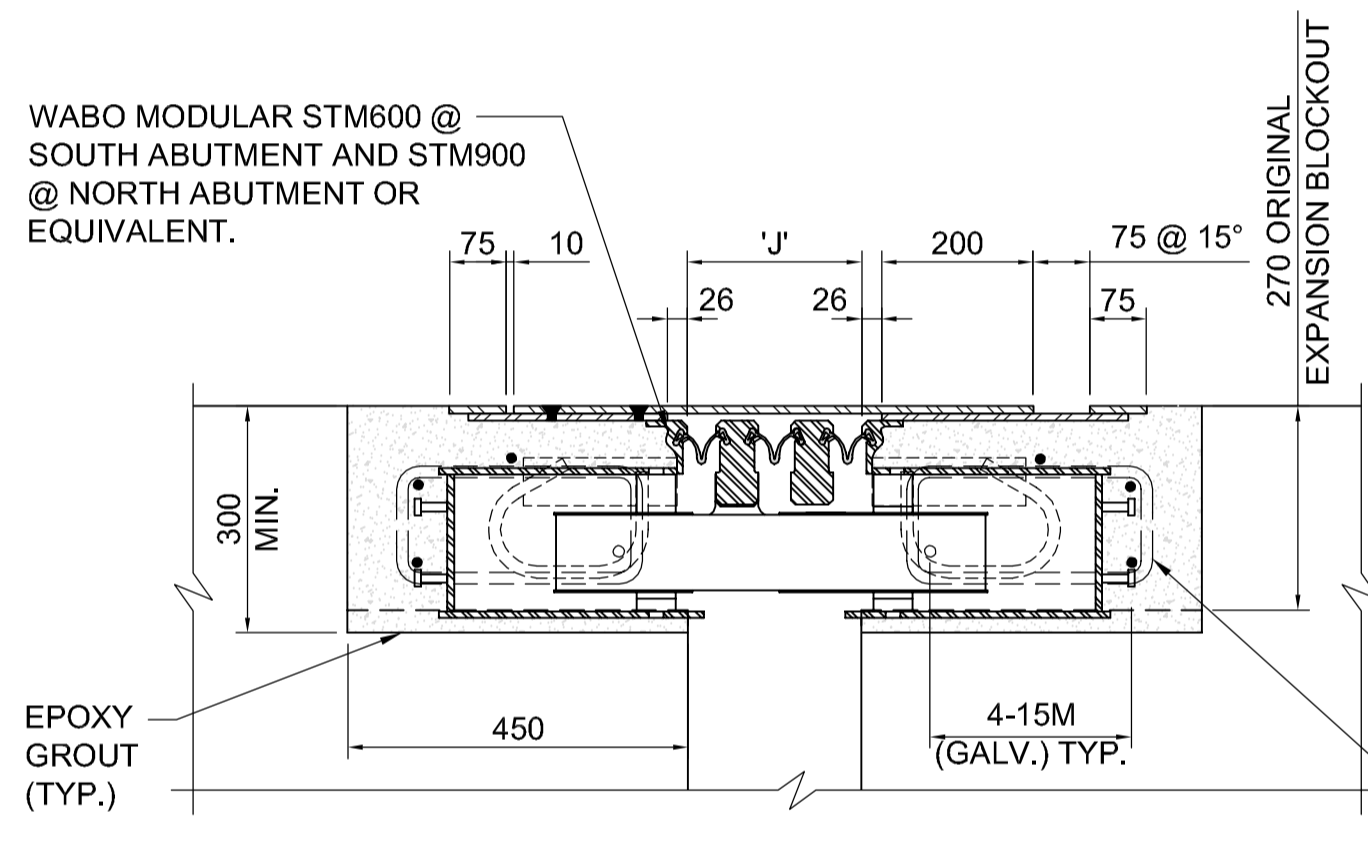
2 DETAIL
SCALE 1:10



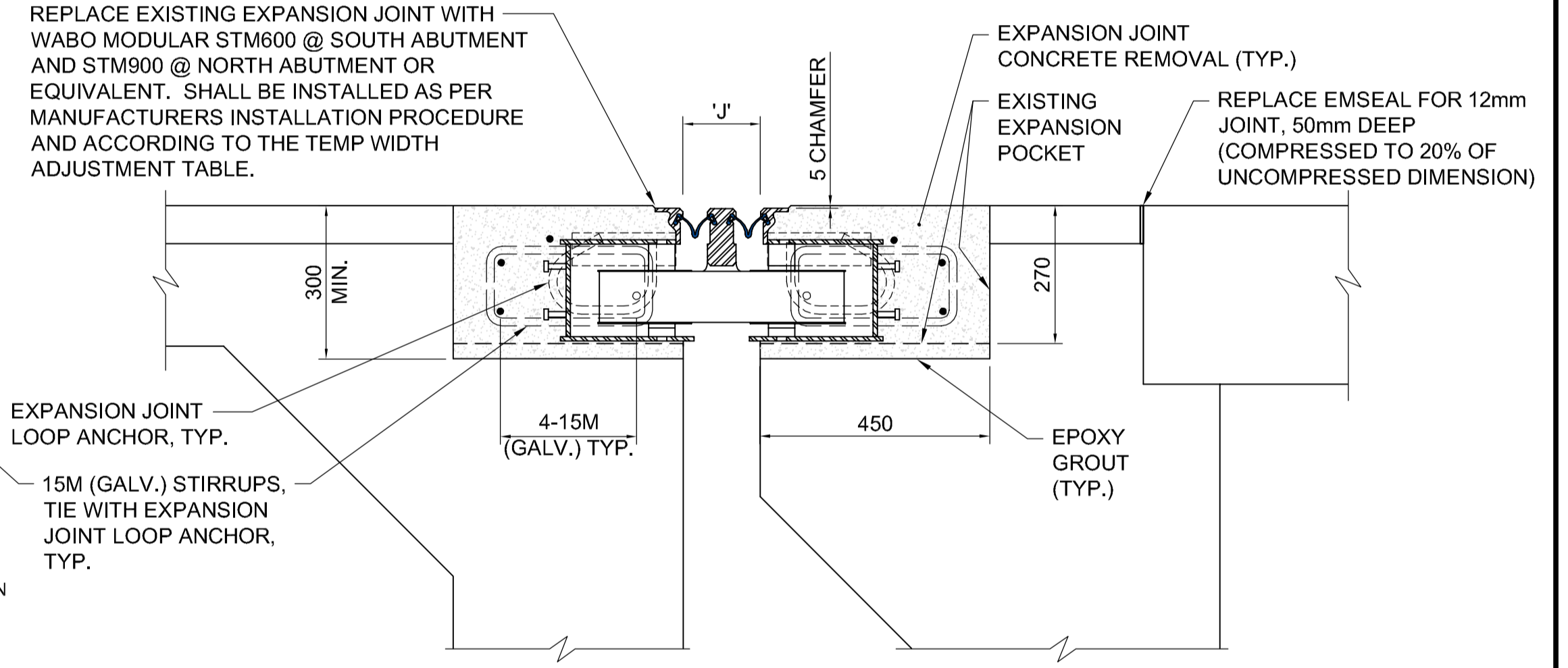
B SECTION
SCALE 1:10



C SECTION
SCALE 1:10



A SECTION (SHOWING NORTH EXPANSION JOINT, SOUTH SIMILAR)
SCALE 1:10



SOUTH EXPANSION JOINT TYPICAL SECTION
SCALE 1:10

- GENERAL NOTES:
- EXPANSION JOINT SHALL BE DESIGNED IN ACCORDANCE WITH DESIGN LIVE LOAD HSS25-44 TRUCK LOADING AND HS25-44 LANE LOADING.
 - ALL STEEL TO BE CAN/CSA G40.21-M45 GRADE 300W AND SHALL BE GALVANIZED TO CSA G164-M92 "HOT DIP GALVANIZING OF IRREGULARLY SHAPED ARTICLES" AFTER FABRICATION.
 - INSTALLATION TEMPERATURE SHALL BE TAKEN AS THE MEAN SHADE TEMPERATURE UNDER THE BRIDGE FOR 48 HOURS PRIOR TO CASTING THE JOINTS INTO THE DECK.
 - CONTACT THE CONTRACT ADMINISTRATOR FOR INSTRUCTIONS REGARDING INSTALLATION TEMPERATURE IN EXCESS OF +25° C.
 - ALL WELDING SHALL BE IN ACCORDANCE WITH CSA W59-M1989 "WELDED STEEL CONSTRUCTION".
 - FABRICATORS SHALL BE CERTIFIED IN ACCORDANCE WITH CSA W47.1-92 "CERTIFICATION OF COMPANIES FOR FUSION OF STEEL STRUCTURES".
 - THE EXPANSION UNITS SHALL BE FABRICATED AND INSTALLED TO MATCH THE EXISTING TRANSVERSE GRADIENT OF THE ROADWAY PROFILE OVER THE BRIDGE. CONTRACTOR TO FIELD VERIFY PRIOR TO FABRICATION.
 - APPLY GALVALLOY TO ALL FIELD WELDS AND AREAS WHERE GALVANIZING HAS BEEN DAMAGED.
 - PRIOR TO PLACING CONCRETE, THE INSTALLATION SHALL BE APPROVED BY THE CONTRACT ADMINISTRATOR.
 - ALL SURFACES IN CONTACT WITH SEAL SHALL BE CLEANED PRIOR TO INSTALLATION OF THE SEAL.
 - ALL MATERIAL SHALL BE INSTALLED IN ACCORDANCE WITH RESPECTIVE MANUFACTURER'S RECOMMENDATIONS.
 - LOOSEN OFF ERECTION BOLTS WITHIN 24 HOURS OF EXPANSION AREA POUR TO ALLOW FOR MOVEMENT DUE TO TEMPERATURE CHANGE.

- DEMOLITION NOTES:
- REMOVE GUARDRAIL POSTS ADJACENT TO EXPANSION JOINT PRIOR TO START OF DEMOLITION.
 - TEMPORARILY REMOVE SECTION OF PEDESTRIAN HANDRAIL AT SIDEWALK EXPANSION JOINTS.
 - REMOVE EXISTING CURBS 450 mm EACH SIDE OF THE EXPANSION JOINT TO DECK ELEVATION.
 - REMOVE DECK 450 mm EACH SIDE OF THE EXPANSION JOINT 300mm DEEP.
 - ALL TRANSVERSE REINFORCING IN DEMOLITION LIMITS TO BE REPLACED IN KIND.
 - ALL CURB, GIRDER AND DIAPHRAGM STIRRUPS ARE TO BE MAINTAINED IN GOOD CONDITION.
 - NO DEMOLITION IS TO TAKE PLACE BELOW THE BOTTOM MAT OF DECK REINFORCING.
 - SAW CUT 12mm WIDE, 50mm DEEP GAP AT ABUTMENT AND DECK JOINTS TO FACILITATE EMSEAL BEJS INSTALLATION.

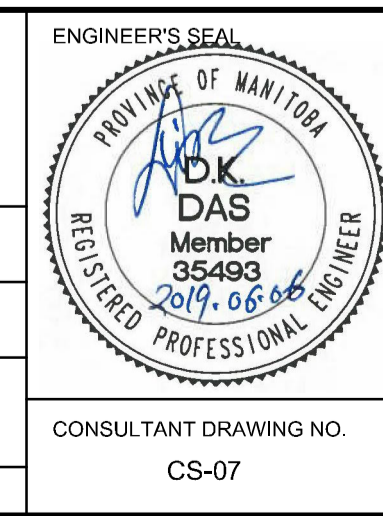
TEMPERATURE WIDTH ADJUSTMENT TABLE

DIM. 'J'	5°	10°	15°	20°	25°	30°	MIN.	MAX.
S. ABUT	168	161	154	147	140	133	133	265
N. ABUT	305	294	283	272	261	250	241	439

- NOTES:
- REMOVE SHOULDER BARRIER AND MEDIAN BARRIER EXPANSION JOINT AND SLIDER PLATE (6 LOCATIONS).
 - SHOULDER BARRIER AND MEDIAN BARRIER MOUNTING PLATES SHALL BE SAND BLASTED AND PAINTED WITH GALVALLOY, OR APPROVED EQUAL, PRIOR TO REINSTALLING SLIDING PLATES.
 - CAREFULLY REMOVE 4 SIDEWALK SLIDING PLATES AND 8 SIDEWALK MOUNTING PLATES AT FOUR LOCATIONS (NORTH WEST, NORTH EAST, SOUTH WEST, SOUTH EAST). HOT DIP GALVANIZE AND REINSTALL.
 - ADJUST HEIGHT OF EXISTING SIDEWALK MOUNTING PLATES AND SLIDING PLATES TO PROVIDE FREE MOVEMENT AT EXPANSION JOINTS AND SMOOTH TRANSITION TO SIDEWALK (TYP.)
 - REMOVE EXISTING JOINTS AT ABUTMENT AND APPROACH SLAB AND REPLACE WITH NEW EMSEAL BEJS.
 - LEVELING OF EXPANSION JOINTS SHALL BE DONE AS PER EXPANSION JOINT SUPPLIERS GUIDE LINES.
 - CONTRACTOR TO REPLACE ANY EXISTING CAP SCREWS THAT ARE MISSING, BROKEN, OR SEIZED AND RETAP HOLES AS REQUIRED.



B.M. ELEV.					
DESIGNED BY	DKD	CHECKED BY	DKD		
DRAWN BY	KM	APPROVED BY	EBL		
HOR. SCALE:	AS NOTED	RELEASED FOR CONSTRUCTION BY:			
VERTICAL:					
ISSUED FOR TENDER	19/06/06	DATE	2019-05-24	DATE	
NO. REVISIONS		DATE		DATE	



METRIC
WHOLE NUMBERS INDICATE MILLIMETRES
DECIMALIZED NUMBERS INDICATE METRES

THE CITY OF WINNIPEG
PUBLIC WORKS DEPARTMENT
TRANSPORTATION ENGINEERING DIVISION

2019 SLAW REBCHUK OVERPASS DECK, EXPANSION JOINTS AND MISCELLANEOUS REPAIRS

CITY DRAWING NUMBER B115-19-08
SHEET 8 OF 8

EXPANSION JOINT DETAILS

REV-0

P:\60605710\BNC-CAD_016\110-CAD\DWG-SHEETS\CS-07.DWG