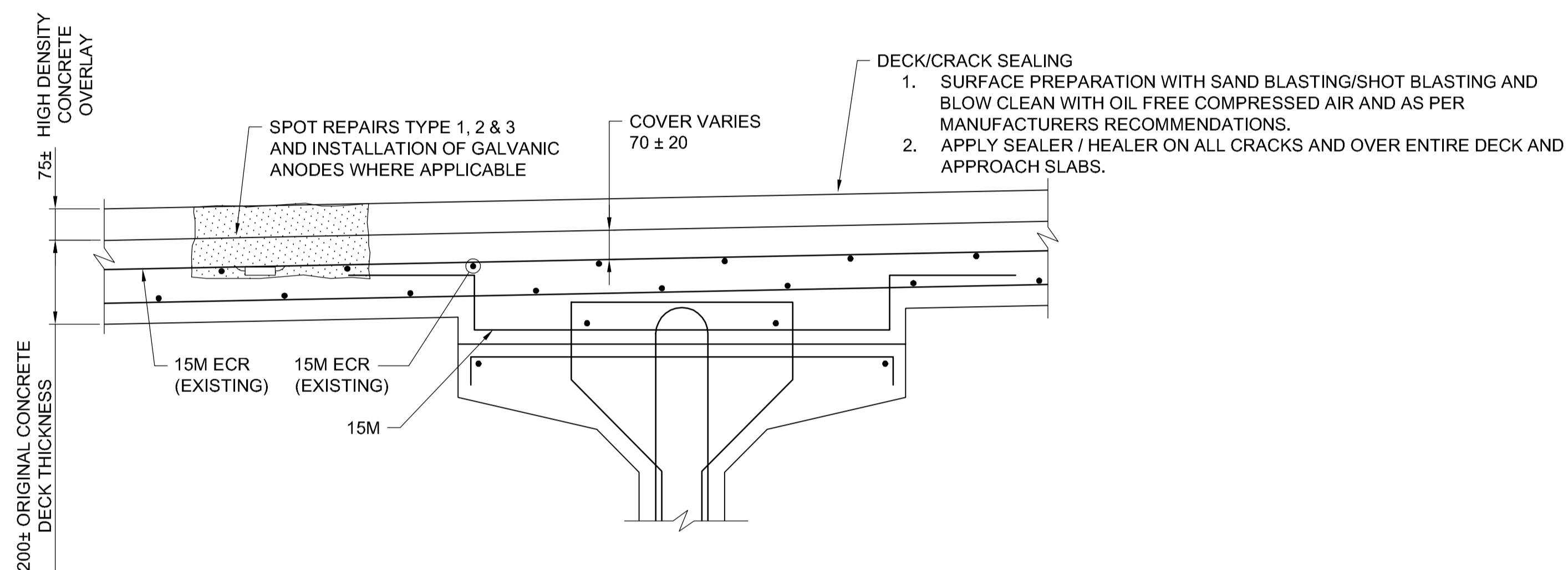
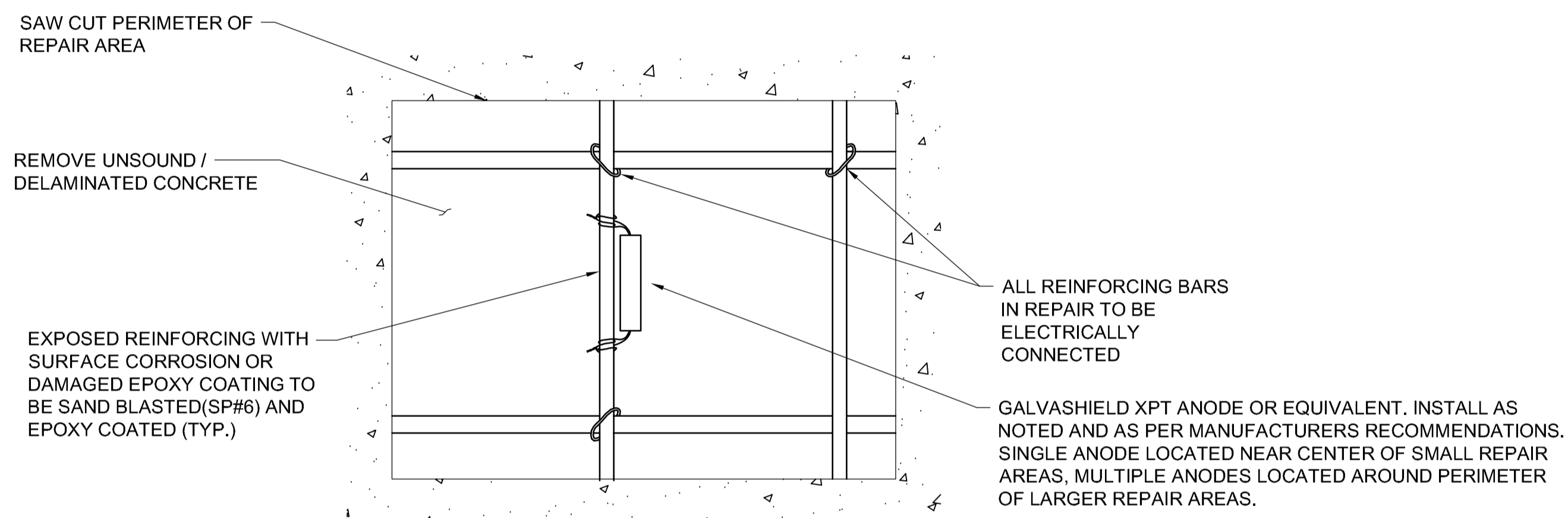


TYPICAL CROSS SECTION

SCALE 1:50



1 **DETAIL**
SCALE 1:10



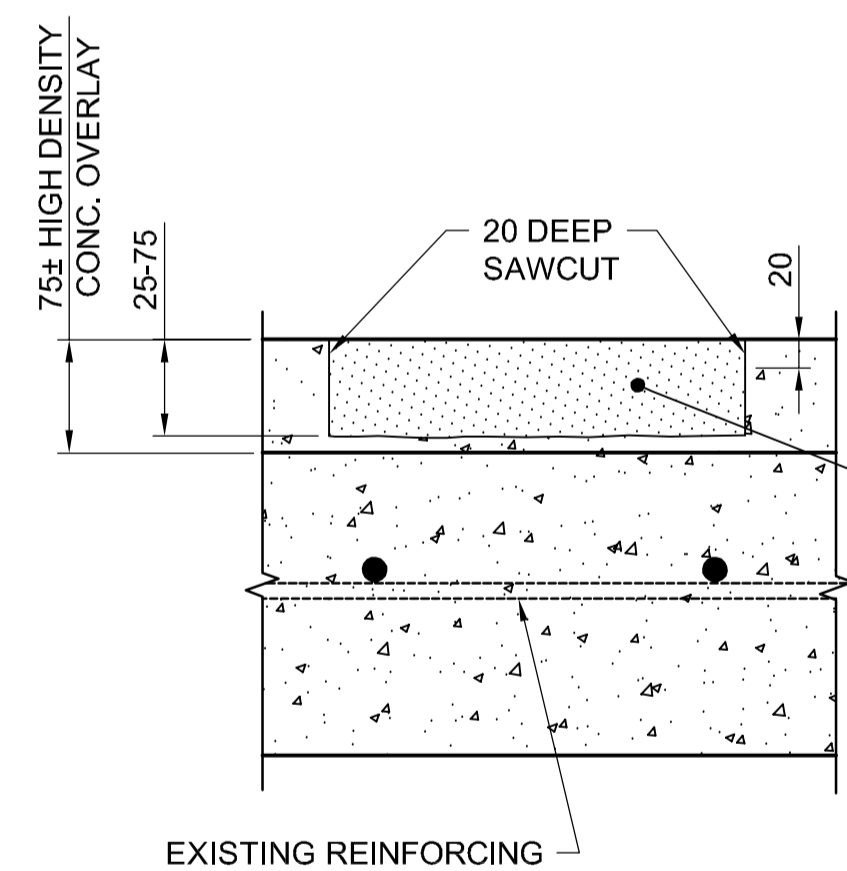
PLAN VIEW
TYPE 2, 3, 5, & 6
N.T.S.

GUIDELINE FOR ANODE PLACEMENT	
REPAIR AREA (mm)	MINIMUM NUMBER OF ANODES
300 X 300	1
350 X 350	2
400 X 400	3
> 400 X 400	AT MAX. 500 SPACING AROUND PERIMETER
ALL SPOT REPAIR LOCATIONS	AT EACH BAR ALONG EXISTING CRACK

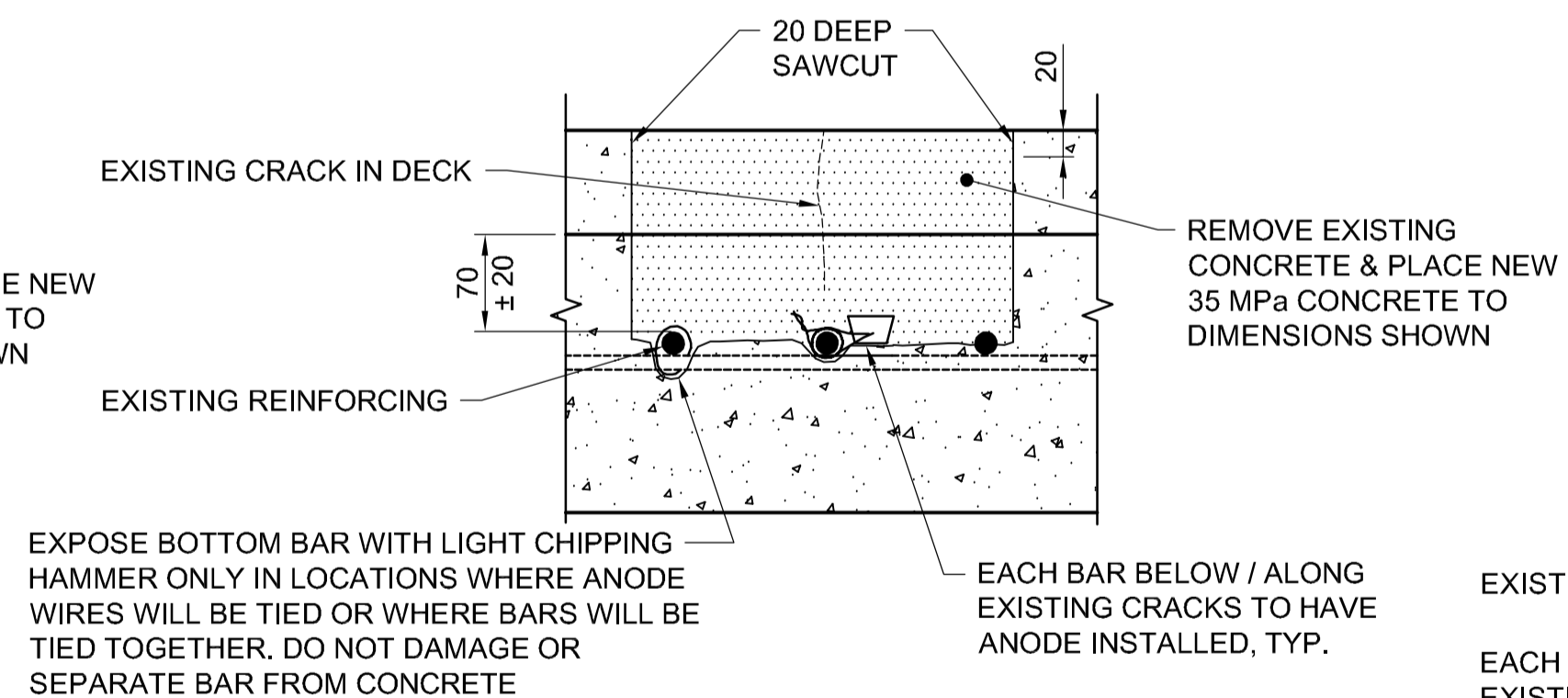
FINAL ANODE LAYOUT TO BE AS DIRECTED BY CONTRACT ADMINISTRATOR

NOTES:

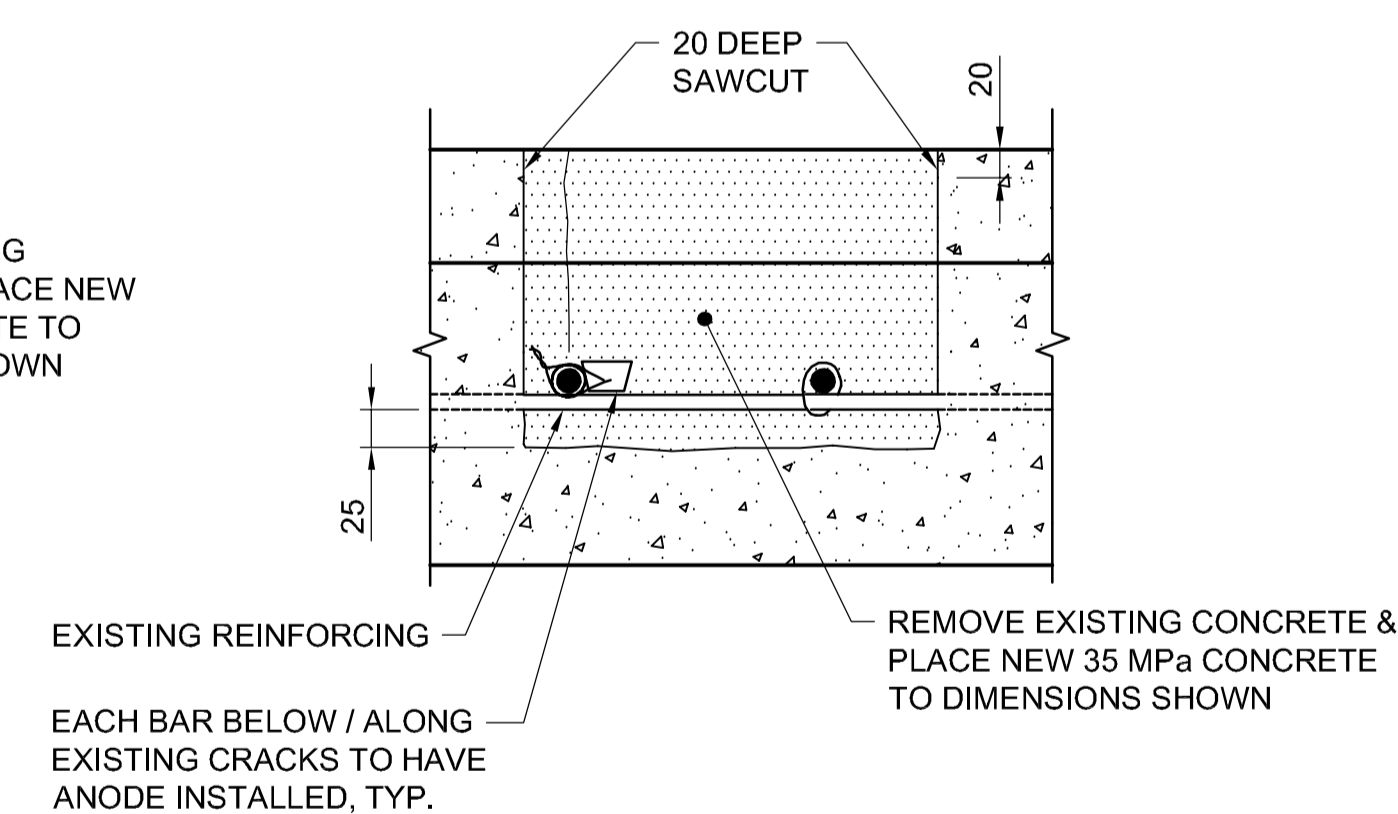
1. ACTUAL REPAIR AREAS WILL BE MARKED OUT BY CONTRACT ADMINISTRATOR.



TYPE 1 REPAIR
SURFACE
(25 - 75 mm)



TYPE 2 REPAIR
PARTIAL DEPTH
(76 mm TO MID-HEIGHT OF TOP REBAR)



TYPE 3 REPAIR
FULL DEPTH
(MID-HEIGHT OF TOP REBAR TO 200 mm)

TYPICAL DECK REPAIR DETAILS

SCALE N.T.S.

METRIC
WHOLE NUMBERS INDICATE MILLIMETRES
DECIMALIZED NUMBERS INDICATE METRES

ECR - EPOXY COATED REINFORCING



B.M. ELEV.	AECOM			THE CITY OF WINNIPEG PUBLIC WORKS DEPARTMENT TRANSPORTATION ENGINEERING DIVISION	
	DESIGNED BY: DKD	CHECKED BY: DKD		2019 SLAW REBCHUK OVERPASS DECK, EXPANSION JOINTS AND MISCELLANEOUS REPAIRS	
	DRAWN BY: KM	APPROVED BY: EBL	RELEASED FOR CONSTRUCTION BY:		SHEET 5 OF 8
0 ISSUED FOR TENDER	19/06/06	DKD	CONSULTANT DRAWING NO. CS-04		REV-0
NO. REVISIONS	DATE	BY	DATE	2019-04-24	DATE