

- EXPANSION JOINT REPLACEMENT (SEE SHEET 8) AND PLATE REPAIRS:
1. REMOVE SHOULDER BARRIER AND MEDIAN BARRIER EXPANSION JOINT SLIDER PLATES (6 LOCATIONS).
 2. CAREFULLY REMOVE 4 SIDEWALK SLIDING PLATES AND 8 SIDEWALK MOUNTING PLATES AT FOUR LOCATIONS (NORTH WEST, NORTH EAST, SOUTH WEST, SOUTH EAST), HOT DIP GALVANIZE AND REINSTALL.
 3. ADJUST HEIGHT OF EXISTING SIDEWALK MOUNTING PLATES AND SLIDING PLATES TO PROVIDE FREE MOVEMENT AT EXPANSION JOINTS AND SMOOTH TRANSITION TO SIDEWALK (TYP.)

PLAN
SCALE 1:150

LEGEND

- REBAR COVER DEPTH MEASUREMENT (mm)
- < 50mm ● 41
 - 51-100mm ● 75
 - > 101mm ● 103

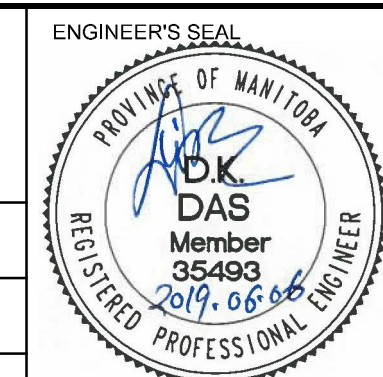
- POTENTIAL DELAM, SPALL, AND/OR REPAIR AREA
- EXISTING PATCH
- EXPANSION JOINT REMOVAL
- MEDIUM CRACK —
- WIDE CRACK (NOT ALL CRACKS SHOWN) —

NOTES:

1. DELAMINATION AREAS SHOWN ARE BASED ON INSPECTION COMPLETED IN 2017. ACTUAL REPAIR AREAS MAY BE DIFFERENT, AND WILL BE MARKED OUT ON SITE BY CONTRACT ADMINISTRATOR.



B.M. ELEV.		AECOM		DESIGNED BY: DKD		CHECKED BY: DKD	
				DRAWN BY: KM		APPROVED BY: EBL	
		HOR. SCALE: AS NOTED		RELEASED FOR CONSTRUCTION BY:			
0 ISSUED FOR TENDER		19/06/06 DKD		2019-04-24			
NO. REVISIONS		DATE BY		DATE		DATE	



METRIC
WHOLE NUMBERS INDICATE MILLIMETRES
DECIMALIZED NUMBERS INDICATE METRES

THE CITY OF WINNIPEG
PUBLIC WORKS DEPARTMENT
TRANSPORTATION ENGINEERING DIVISION

2019 SLAW REBCHUK OVERPASS
DECK, EXPANSION JOINTS
AND MISCELLANEOUS REPAIRS

CITY DRAWING NUMBER
B115-19-02
SHEET 2 OF 8

DECK REPAIR PLAN (1 OF 3)

REV-0

P:\2019\10\09\CAD_018\10\CAD\DWG\SHEETS\CS-01.DWG