



Figure 1 – Sheet 3, Dwg 12267, S-MA70012138 (McPhillips St) – Transition from 1100 mm Egg Sewer to 600 mm Fabricated Steel Elbow upstream of MH70004867.



Figure 2 – Sheet 3, Dwg 12267, S-MA70012139 (McPhillips St) – Fabricated Steel Elbow at MH70004868.



Figure 3: Sheet 3, Dwg 12267, Flanged Access Point in sidewalk on S-MA70012139 on McPhillips St.



Figure 4 - Sheet 4, Dwg 12268, S-MA70012140 (Easement N. of Higgins) – Hole with Debris at 38.0m upstream of MH70066235





Figure 5 – Sheet 4, Dwg 12268, S-MA70012140 (Easement N. of Higgins) – Hole with Debris at 38.0m upstream of MH70066235



Figure 6 – Sheet 5, Dwg 12269, S-MA20018718 (Sherbrook St.) – Downstream Tee Connection on Logan Av as Seen from Asset S-MA20019853.



Figure 7 – Sheet 8, Dwg 12272, S-MA70033475 (Ellice Av.) – Material Change from Segmental Clay Tile to Vitrified Clay at 50.8 m Downstream.



Figure 8 – Sheet 6, Dwg 12270, S-MA70033475 (Ellice Av.) – Material and Cross Section Change to Oval Precast Concrete.





Figure 9 – Sheet 8, Dwg 12272, S-MA70033475 (Ellice Av.) – Material and Cross Section Change to Circular Vitrified Clay.



Figure 10 – Sheet 7, Dwg 12271, S-MA70033476 (Ellice Av.) – Infiltration (Gusher) at 3.0 m Downstream.



Figure 11 – Sheet 6, Dwg 12270, S-MA20017229 (Ellice Av.) – Apparent Diameter Change from 750 mm to 900 mm at 3.0 m Downstream.

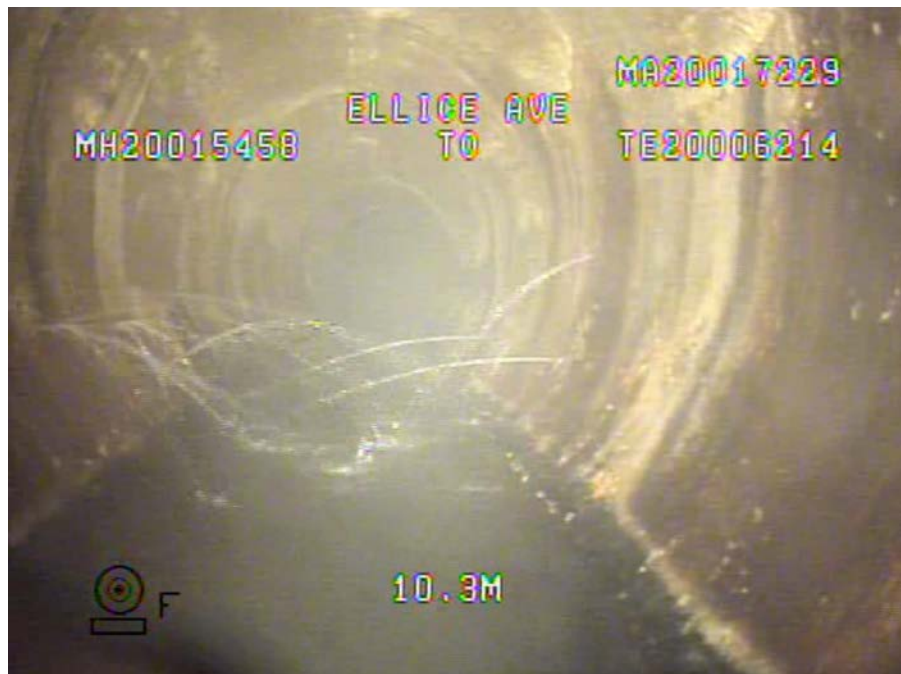


Figure 12 – Sheet 6, Dwg 12270, S- MA20017229 (Ellice Av.) – Infiltration (Gusher) at 7.6 m to 13.0 m Downstream.





Figure 13 – Sheet 6, Dwg 12270, S-MA20017229 (Ellice Av.) – Downstream Tee Connection on Lipton St as Seen from Asset S-MA20017222.

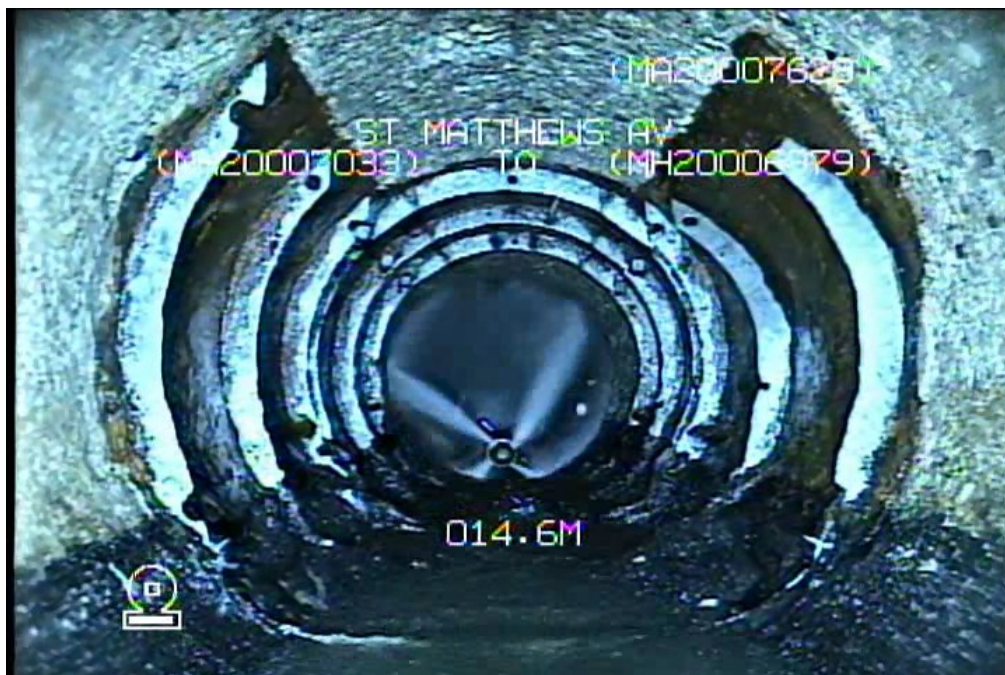


Figure 14 – Sheet 12, Dwg 12276, S-MA20007628 (St. Matthews Av.) – Existing Steel-Ribbed Repair at 14.8 m to 16.8 m Downstream.



Figure 15 – Sheet 15, Dwg 12279, S-MA60003590 (Vialoux Dr.) – Downstream Tee Connection as Seen from Asset S-MA60003569.



Figure 16 – Sheet 23, Dwg 12287, S-MA00018268 (Sutherland Av.) – Stepped Diameter Change from 900 mm to 1100 mm at 10.1m Downstream.





Figure 17 – Sheet 23, Dwg 12287 (Sutherland Av.) – Location of S-MH00014066 and Overhead Hydro.



Figure 18 – Sheet 24, Dwg 12288, S-MA70030750 (Sutherland Av.) – 150 mm Watermain Crossbore at 94 m Downstream.



Figure 19 – Sheet 24, Dwg 12288 (Sutherland Av.) – Location of S-MH00012506 and Overhead Hydro.



Figure 20 - Sheet 25, Dwg 12289, S-MA00013978 (Sutherland Av.) – 450 mm Sewer Crossbore at 87 m Downstream.



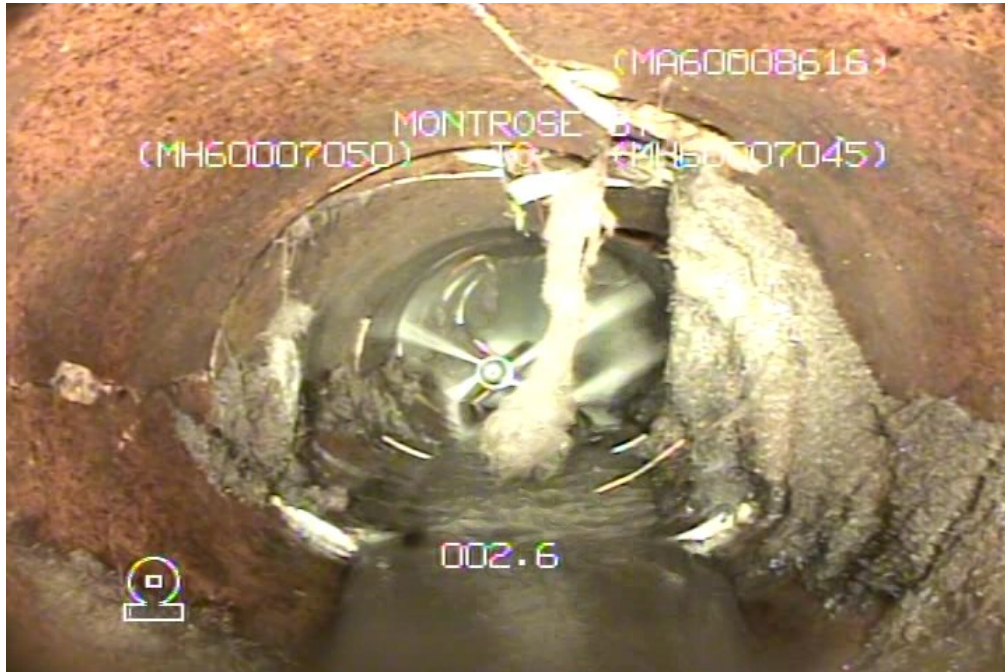


Figure 21 - Sheet 16, Dwg 12280, S-MA60008616 (Montrose St) - EPR Req'd at 1.8 - 7.7 m Downstream

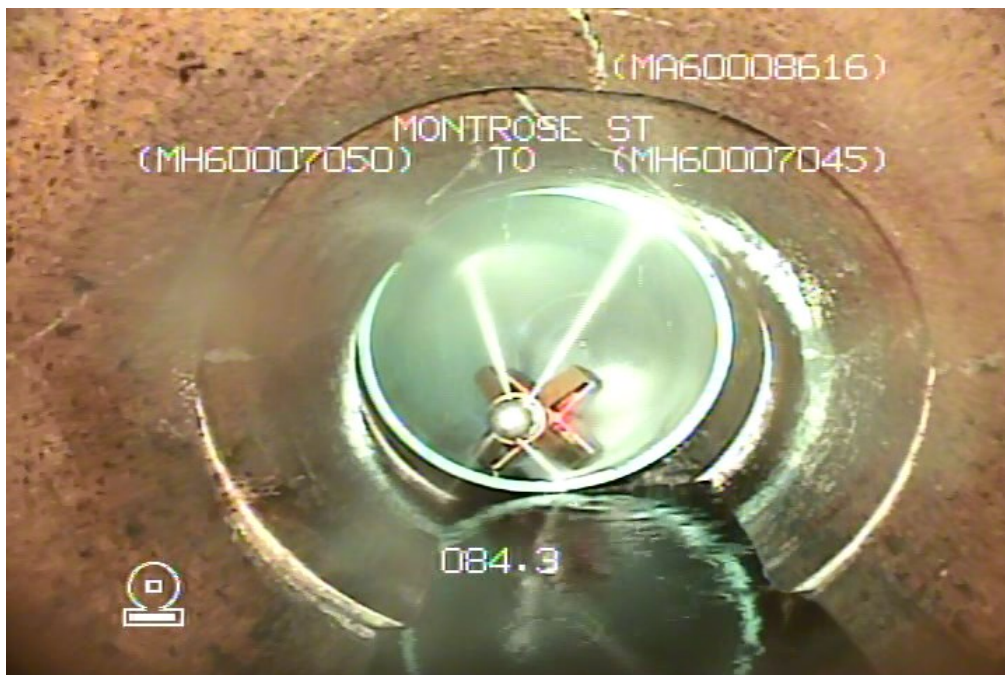


Figure 22 – Sheet 16, Dwg 12280, S-MA60008616 (Montrose St.) – PVC Repair Sleeve at 85.8 - 91.8 m Downstream.



Figure 23 - Sheet 05, Dwg 12269, S-MA20018718 (Sherbrook St) - PVC Repair at 38.0 - 41.8 m  
Downstream