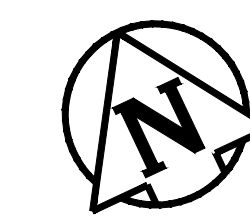
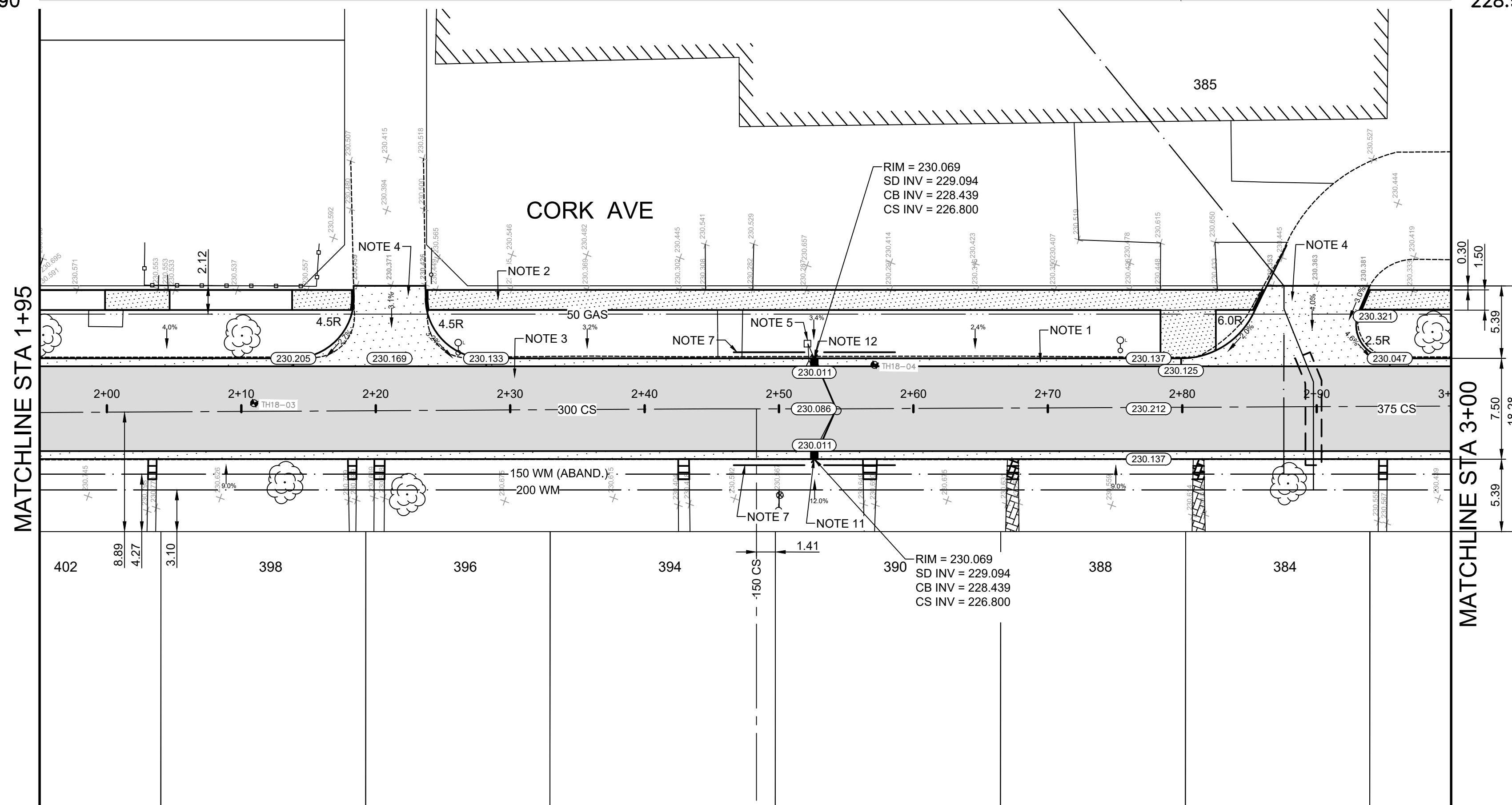


TYPICAL CROSS SECTION
N.T.S.



ALL WATER SERVICES WITHIN THE LIMITS OF THE RECONSTRUCTION SHALL BE INSULATED AS PER SPECIFICATION E-10

PLAN :

CONSTRUCTION NOTES

1. REMOVE EXISTING CURB AND CONSTRUCT NEW CONCRETE CURB AND GUTTER (SD-200)
2. REMOVE AND CONSTRUCT NEW 100mm CONCRETE SIDEWALK (SD-228A)
3. REMOVE EXISTING PAVEMENT AND CONSTRUCT NEW 100mm ASPHALT PAVEMENT
4. REMOVE EXISTING APPROACH AND CONSTRUCT NEW 150mm REINFORCED CONCRETE APPROACH (SD-232)
5. REMOVE EXISTING CATCH BASIN & DRAINAGE INLET AS PER CW 2130
6. INSTALL NEW 1800 CATCH BASIN WITH CURB & GUTTER INLET (SD-024) CONNECT TO EXISTING COMBINED SEWER AS PER CW 2130
7. INSTALL 6m TYPICAL SUBDRAINS (SD-245) CONNECT TO CATCH BASIN AND CAP ENDS AS PER CW 3120
8. REMOVE EXISTING CONCRETE SIDEWALK
9. REMOVE EXISTING CONCRETE
10. ABANDON EXISTING CATCH BASIN & CATCH PIT AS PER CW 2130
11. REMOVE AND REPLACE NEW 1800 CATCH BASIN WITH CURB & GUTTER INLET (SD-024) CONNECT TO EXISTING MANHOLE AS PER CW 2130
12. INSTALL NEW 1800 CATCH BASIN WITH CURB & GUTTER INLET (SD-024) CONNECT TO EXISTING MANHOLE AS PER CW 2130

GENERAL NOTES

- A. PAVEMENT DIMENSIONS ARE TO BACK OF CURB
- B. ALL CURB RADII UNDER 15.0m SHALL BE MODIFIED
- C. CURB REPLACEMENT AS DIRECTED BY CONTRACT ADMINISTRATOR
- D. INSTALL DETECTABLE WARNING TILES AS DIRECTED BY CONTRACT ADMINISTRATOR (CW 3326)

PRELIMINARY
NOT TO BE USED FOR CONSTRUCTION

METRIC
WHOLE NUMBERS INDICATE MILLIMETERS
DECIMALIZED NUMBERS INDICATE METERS

TENDER NO. 452-2019

⊕	HYDRANT	◆	---	LDS/WWS	---	CONCRETE	---	LOCATION APPROVED	B.M. ELEV.	IB @ NW CORNER OF 426 CORK AVE 230.660
⊗	VALVE	●	---	WATERMAIN	---	CONCRETE SIDEWALK	---	UNDERGROUND STRUCTURES		
○	CURB STOP	●	---	GAS	---	ASPHALT	---			
○	MANHOLE	●	---	HYDRO/STREET LIGHT	---	WOOD FENCE	---			
□	CATCH BASIN	■	---	MTS/SHAW	---	METAL FENCE	---			
△	CURB INLET	▲	---	CURB RENEWAL	---	LEGEND - PLAN	---			
○	HYDRO POLE	●	---	PROPERTY LINE	---	NORTH GUTTER	---			
○	LIGHT STANDARD	●	---	RAMP CURB	---	CENTER LINE	---			
○	TRAFFIC SIGNAL POLE	●	---	ELEVATIONS	---	SOUTH GUTTER	---			
+	SURVEY BAR	+	---	TREE	---	NORTH SIDEWALK	---			
⊕	GEODETIC BENCH MARK	⊕	---	BRICK	---	NORTH SIDEWALK	---			
---	EXISTING	---	---	LEGEND - PLAN	---	LEGEND - PROFILE	---			
---	LEGEND - PLAN	---	---	PROPOSED	---	PROPOSED	---			

NOTE:
LOCATION OF UNDERGROUND STRUCTURES AS SHOWN ARE BASED ON THE BEST INFORMATION AVAILABLE. BUT NO GUARANTEE IS GIVEN THAT ALL EXISTING UTILITIES ARE SHOWN OR THAT THE GIVEN LOCATIONS ARE EXACT. CONFIRMATION OF EXISTENCE AND EXACT LOCATION OF ALL SERVICES MUST BE OBTAINED FROM THE INDIVIDUAL UTILITIES BEFORE PROCEEDING WITH CONSTRUCTION.

1.	SUBMIT FOR PLAN APPROVAL	29/04/19	E.H.
NO.	REVISIONS	DATE	BY

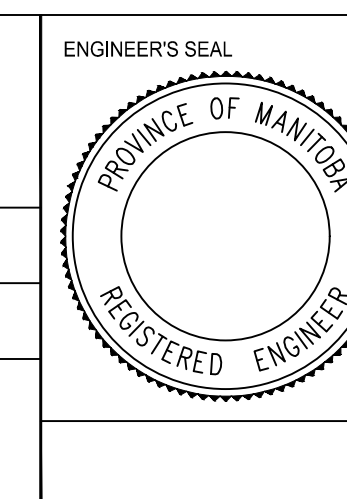
ENGINEERING DIVISION
TECHNOLOGY SERVICES BRANCH
106 - 1155 PACIFIC AVE

DESIGNED BY: C.W.
CHECKED BY: E.H. & C.H.

DRAWN BY: C.W.
APPROVED BY:

HOR. SCALE: 1 : 250
VERTICAL: 1 : 10

DATE: 2019/05/17



THE CITY OF WINNIPEG
PUBLIC WORKS DEPARTMENT

CORK AVENUE
FROM SLY DR TO SALTER ST
ASPHALT RECONSTRUCTION AND ASSOCIATED WORKS
FROM STA. 1+95 TO STA. 3+00

CITY DRAWING NUMBER: SE-19-42
SHEET 9 OF 26

2