

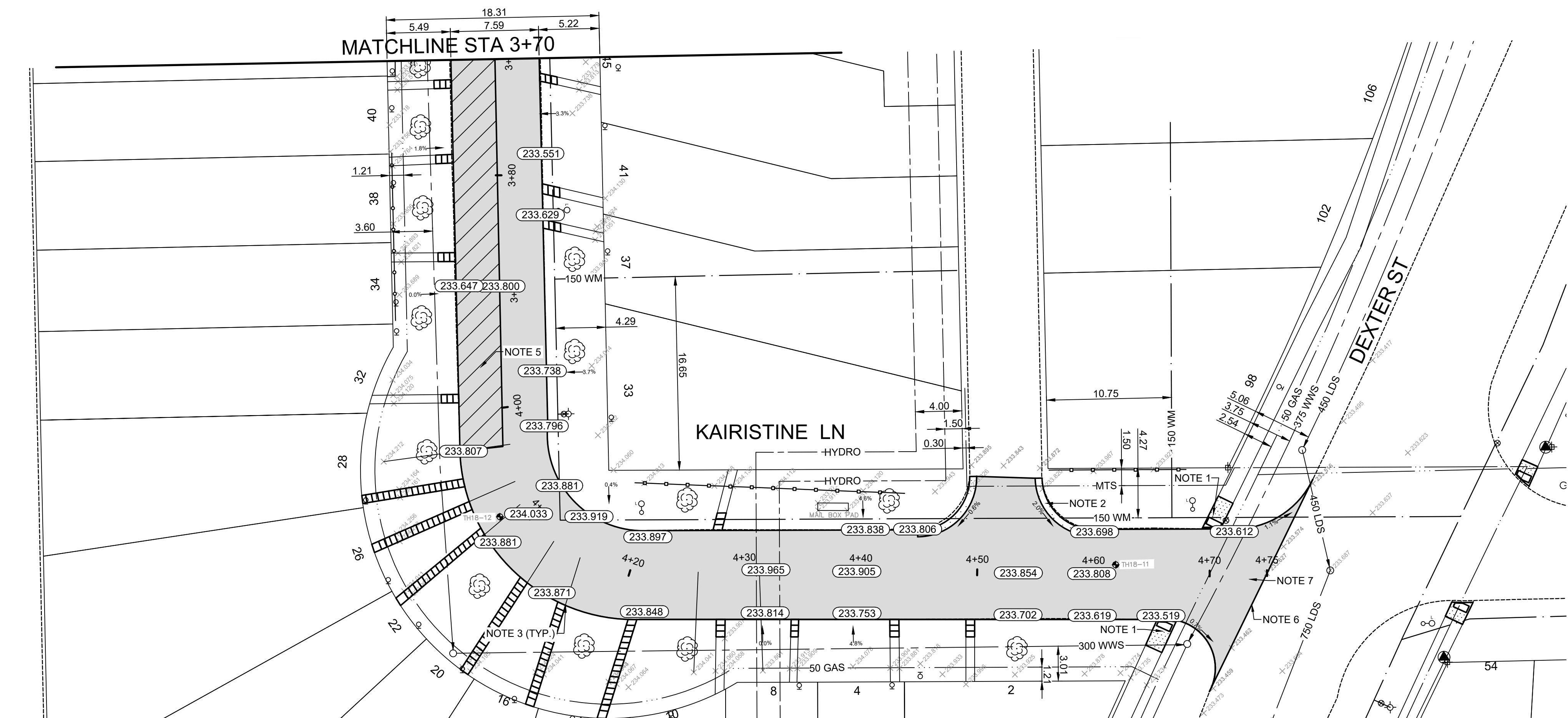
- CONSTRUCTION NOTES**
1. REMOVE AND CONSTRUCT NEW 100mm CONCRETE SIDEWALK (SD-228A)
  2. REMOVE EXISTING CURB AND CONSTRUCT NEW MODIFIED BARRIER CONCRETE CURB AND GUTTER (SD-200)
  3. CONSTRUCT NEW ASPHALT BARRIER CURB (E17)
  4. INSTALL NEW FRAME AND GRATED COVER (AP-006, AP-008)
  5. REMOVE EXISTING PAVEMENT AND CONSTRUCT NEW 100mm ASPHALT PAVEMENT
  6. LIMIT OF ASPHALT OVERLAY
  7. MILL EXISTING ASPHALT

- GENERAL NOTES**
- A. PAVEMENT DIMENSIONS ARE TO BACK OF CURB
  - B. ALL CURB RADII UNDER 15.0m SHALL BE MODIFIED
  - C. CURB REPLACEMENT AS DIRECTED BY CONTRACT ADMINISTRATOR
  - D. INSTALL DETECTABLE WARNING TILES AS DIRECTED BY CONTRACT ADMINISTRATOR (CW 3326)
  - E. APPLY CRACK SEALANT TO LONGITUDINAL CRACKS EXCEEDING 25mm IN WIDTH
  - F. MILL EXISTING CURB AS DIRECTED BY CONTRACT ADMINISTRATOR

**PRELIMINARY**  
NOT TO BE USED FOR CONSTRUCTION

**METRIC**  
WHOLE NUMBERS INDICATE MILLIMETERS  
DECIMALIZED NUMBERS INDICATE METERS

TENDER NO. 452-2019



EXISTING	LEGEND - PLAN	PROPOSED	EXISTING	LEGEND - PLAN	PROPOSED	EXISTING	LEGEND - PROFILE	PROPOSED
⊕	HYDRANT	⊕	---	LDS/WWS	---	▨	CONCRETE	▨
⊗	VALVE	⊗	---	WATERMAIN	---	▩	CONCRETE SIDEWALK	▩
⊙	CURB STOP	⊙	---	GAS	---	▩	ASPHALT	▩
○	MANHOLE	●	---	HYDRO/STREET LIGHT	---	▩	BRICK	▩
□	CATCH BASIN	□	---	MTS/SHAW	---	▩	LEGEND - PLAN	PROPOSED
△	CURB INLET	▲	---	CURB RENEWAL	---	---	LEGEND - PROFILE	PROPOSED
○	HYDRO POLE	●	---	RAMP CURB	---	---	SOUTH / WEST GUTTER	---
○	LIGHT STANDARD	●	---	ELEVATIONS	(31.000)	---	CENTER LINE	---
○	TRAFFIC SIGNAL POLE	●	---	TREE	---	---	NORTH / EAST GUTTER	---
⊕	SURVEY BAR	⊕	---	WOOD FENCE	---	---		---
⊕	GEODETIC BENCH MARK	⊕	---	METAL FENCE	---	---		---

LOCATION APPROVED UNDERGROUND STRUCTURES

IB @ SE CORNER OF 98 DEXTER ST  
233.773

ENGINEERING DIVISION  
TECHNOLOGY SERVICES BRANCH  
106 - 1155 PACIFIC AVE

DESIGNED BY C.W. CHECKED BY E.H. & C.H.

DRAWN BY C.W. APPROVED BY

HOR. SCALE: 1 : 250  
VERTICAL: 1 : 10

DATE 2019/05/17

REVISIONS

1. SUBMIT FOR PLAN APPROVAL 29/04/19 E.H.

ENGINEER'S SEAL

PROVINCE OF MANITOBA  
REGISTERED ENGINEER

THE CITY OF WINNIPEG  
PUBLIC WORKS DEPARTMENT

KAIRISTINE LANE  
FROM KINVER AVENUE TO DEXTER STREET  
ASPHALT OVERLAY AND ASSOCIATED WORKS  
FROM STA. 1+00 TO STA. 2+50

CITY DRAWING NUMBER SE-19-40  
SHEET 13 OF 26

3